



Siddiqui, Y. H., Kershaw, R. M., Humphreys, E. H., Marcolino de Assis Junior, E., Chaudhri, S., Jayaraman, P-S., & Gaston, K. (2017). CK2 abrogates the inhibitory effects of PRH/HHEX on prostate cancer cell migration and invasion and acts through PRH to control cell proliferation. *Oncogenesis*, 6(1), [e293].  
<https://doi.org/10.1038/oncsis.2016.82>

Publisher's PDF, also known as Version of record

License (if available):  
CC BY

Link to published version (if available):  
[10.1038/oncsis.2016.82](https://doi.org/10.1038/oncsis.2016.82)

[Link to publication record in Explore Bristol Research](#)  
PDF-document

This is the final published version of the article (version of record). It first appeared online via Nature at <http://www.nature.com/oncsis/journal/v6/n1/full/oncsis201682a.html>. Please refer to any applicable terms of use of the publisher.

## University of Bristol - Explore Bristol Research

### General rights

This document is made available in accordance with publisher policies. Please cite only the published version using the reference above. Full terms of use are available:  
<http://www.bristol.ac.uk/red/research-policy/pure/user-guides/ebr-terms/>

Figure S1

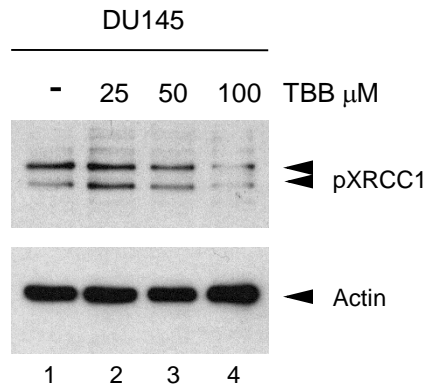
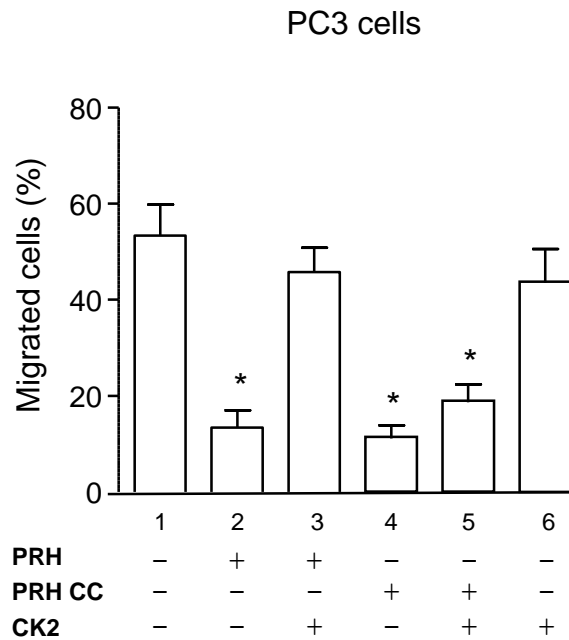


Figure S1 TBB inhibits CK2 in DU145 cells.

DU145 cells were treated with either 10% DMSO (1) or increasing concentrations of TBB in DMSO. Western blotting was then used to examine the levels of pXRCC1. Actin was used as a loading control. Representative of three independent experiments.

Figure S2



**Figure S2** CK2 abrogates the effects of PRH on the migration of PC3 cells. PC3 cells were transiently transfected with a GFP expression vector alone (1) or cotransfected with vectors expressing GFP, PRH or PRH CC and CK2 subunits (2-6). Twenty four hrs post-transfection the cells were plated in Transwell chambers with a 2%:10% serum gradient. After 12 hrs the green cells on the top and bottom surfaces of the filter were counted using microscopy. Cells in ten fields were counted in three independent experiments to determine the percentage of migrated cells. \*p<0.01. One-way ANOVA.