



Magnus, M., Karlstad, O., Haberg, S., Nafstad, P., Davey Smith, G., & Nystad, W. (2016). Prenatal and infant paracetamol exposure and development of asthma: the Norwegian Mother and Child Cohort Study. *International Journal of Epidemiology*, 45(2), 512-522.
<https://doi.org/10.1093/ije/dyv366>

Peer reviewed version

Link to published version (if available):
[10.1093/ije/dyv366](https://doi.org/10.1093/ije/dyv366)

[Link to publication record on the Bristol Research Portal](#)
PDF-document

This is the author accepted manuscript (AAM). The final published version (version of record) is available online via Oxford University Press at <https://academic.oup.com/ije/article-lookup/doi/10.1093/ije/dyv366>. Please refer to any applicable terms of use of the publisher.

University of Bristol – Bristol Research Portal

General rights

This document is made available in accordance with publisher policies. Please cite only the published version using the reference above. Full terms of use are available:
<http://www.bristol.ac.uk/red/research-policy/pure/user-guides/brp-terms/>

**Prenatal and Infant Paracetamol Exposure and
Development of Asthma: the Norwegian Mother and Child
Cohort Study**

Journal:	<i>International Journal of Epidemiology</i>
Manuscript ID	IJE-2015-06-0741.R1
Manuscript Type:	Original Article
Date Submitted by the Author:	n/a
Complete List of Authors:	Magnus, Maria; Norwegian Institute of Public Health, Department of Chronic Diseases Karlstad, Øystein; Norwegian Institute of Public Health, Department of pharmacoepidemiology Håberg, Siri; Norwegian Institute of Public Health, Institute Management and Staff Nafstad, Per; University of Oslo, Department of Community Medicine Davey Smith, George; University of Bristol, MRC Integrative Epidemiology Unit Nystad, Wenche; Norwegian Institute of Public Health, Department of Chronic Diseases
Key Words:	asthma, epidemiology, ibuprofen, paracetamol

1
2
3 **Prenatal and Infant Paracetamol Exposure and Development of Asthma: the Norwegian**
4
5 **Mother and Child Cohort Study**
6
7

8
9 Maria C Magnus ^{1*}, Øystein Karlstad ², Siri E Håberg ³, Per Nafstad ^{1,4}, George Davey Smith
10
11 ⁵ & Wenche Nystad ¹
12
13

14
15
16 ¹ Department of Chronic Diseases, Norwegian Institute of Public Health, Oslo, Norway.
17

18 ² Department of Pharmacoepidemiology, Norwegian Institute of Public Health, Oslo, Norway.
19

20 ³ Institute Management and Staff, Norwegian Institute of Public Health, Oslo, Norway.
21

22 ⁴ Department of Community Medicine, Medical Faculty, University of Oslo, Oslo, Norway.
23

24 ⁵ MRC Integrative Epidemiology Unit at the University of Bristol, School of Social and
25
26
27
28
29
30
31
32
33
34
35
36
37
38
39
40
41
42
43
44
45
46
47
48
49
50
51
52
53
54
55
56
57
58
59
60
Community Medicine, Bristol, United Kingdom.

* Corresponding author. Department of Chronic Diseases, Division of Epidemiology,
Norwegian Institute of Public Health, P.O. Box 4404 Nydalen, 0403 Oslo, Norway. E-mail:
Maria.Christine.Magnus@fhi.no

Word count: Abstract 249 words; Manuscript 3,150 words

Tables and figures: 4 tables, 1 figure and 7 supplementary tables

Medical subject headings: asthma, epidemiology, ibuprofen, paracetamol

Funding:

The data collection in the Norwegian Mother and Child Cohort Study is supported by National Institutes of Health [National Institute of Environmental Health Sciences contract number N01-ES-75558, National Institute of Neurological Disorders and Stroke grant no.1 UO1 NS 047537-01 and grant no.2 UO1 NS 047537-06A1] and the Norwegian Research Council/FUGE [grant number 151918/S10]. This work was supported by the Norwegian Research Council [grant number 221919] and the Norwegian Extra-Foundation for Health and Rehabilitation [grant number 2011.2.0218 to M.C.M.]. The funding sources had no role in the study design; the collection, analysis and interpretation of data; and the writing of the article and the decision to submit it for publication.

Key messages:

- Prenatal and infant paracetamol exposure was independently associated with asthma development after adjusting for common indications.
- We compared associations between several conditions during pregnancy, with and without the use of paracetamol, and asthma development in the offspring. Our findings suggest that the associations could not be fully explained by confounding by indication.
- Maternal use of paracetamol outside of pregnancy and paternal use of paracetamol did not show associations with asthma development in the offspring, indicating little influence by unmeasured characteristics reflected in the propensity for using paracetamol.

Abstract

Background: Paracetamol exposure has been positively associated with asthma development.

The relative importance of prenatal versus infant exposure and confounding by indication remains elusive. We examined the association of prenatal and infant (first 6 months) paracetamol exposure with asthma development while addressing confounding by indication.

Methods: We used information from the Norwegian Mother and Child Cohort Study, including 53,169 children for evaluation of current asthma at 3 years, 25,394 for current asthma at 7 years, and 45,607 for dispensed asthma medications at 7 years in the Norwegian Prescription Database. We calculated adjusted relative risks (adj.RR) and 95% confidence intervals (CI) using log-binomial regression.

Results: There were independent modest associations between asthma at 3 years with prenatal paracetamol exposure (adj.RR 1.13; 95 % CI: 1.02-1.25) and use of paracetamol during infancy (adj.RR 1.29; 95% CI: 1.16-1.45). The results were consistent for asthma at 7 years. The associations with prenatal paracetamol exposure were seen for different indications (pain, respiratory tract infections/influenza and fever). Maternal pain during pregnancy was the only indication that showed an association both with and without paracetamol use. Maternal paracetamol use outside of pregnancy or paternal paracetamol use was not associated with asthma development. In a secondary analysis, prenatal ibuprofen exposure was positively associated with asthma at 3 years but not asthma at 7 years.

Conclusions: This study provides evidence that prenatal and infant paracetamol exposure have independent associations with asthma development. Our findings provided suggest that the associations could not be fully explained by confounding by indication.

Introduction

Asthma is the most common chronic disease during childhood.(1, 2) Prenatal and infant paracetamol exposure is proposed to be positively associated with asthma.(3-5) However, few previous studies were able to evaluate the relative importance of prenatal versus infant paracetamol exposure.(6-8) Paracetamol is the recommended analgesic/antipyretic for pregnant women and infants.(9) If the observed associations reflect true underlying effects, this is a public health concern. A limited number of previous studies of prenatal paracetamol exposure and asthma development considered confounding by indication.(7, 10, 11)

An inherent limitation in observational studies is the possibility of unmeasured confounding. One approach to examine whether associations in observational studies might reflect unmeasured characteristics influencing the propensity for exposure is to use negative controls.(12, 13) Examples of negative controls include maternal use of paracetamol outside of pregnancy and the father's use of paracetamol. If the associations are similar for maternal paracetamol use outside of pregnancy and paternal paracetamol use, it is likely that confounding by genetic or shared environmental characteristics is present.(12, 13)

The objective of the study was thus to examine the association of prenatal and infant paracetamol exposure with asthma development while addressing confounding by indication. To further assess whether the previously reported associations reflected unmeasured confounding, we evaluated maternal paracetamol use outside of pregnancy and paternal paracetamol use. Since ibuprofen is used for many of the same indications as paracetamol, we also evaluated the association between prenatal ibuprofen exposure and asthma development.

Methods

Study population

We used data from the Norwegian Mother and Child Cohort Study (MoBa) conducted by the Norwegian Institute of Public Health.(14, 15) MoBa recruited pregnant women between 1999 and 2008, at approximately 18 weeks gestation. The participation rate of invited pregnant women was 40.6%. Mothers could participate with more than one pregnancy, resulting in approximately 95,200 mothers and 114,500 children. All participants gave a written informed consent. In May 2014, the 114,761 children participating in MoBa were linked to the Medical Birth Registry of Norway (henceforth called “birth registry”) and the Norwegian Prescription Database (henceforth called “prescription registry”). Children not linked to the birth registry (n=499) and children from multiple births (n=3,971) were not eligible for the current study. We used information from the MoBa questionnaires completed at 18 and 30 gestational weeks, and when the child was 6 months, 3 years and 7 years. The Norwegian Data Inspectorate and the Regional Ethics Committee for Medical Research of South/East Norway approved this study.

Exposures

Participating mothers reported the use of medications for different indications during pregnancy through questionnaires completed at 18 gestational weeks, 30 gestational weeks and when the child was 6 months old. The mother was asked if she had experienced the disease/symptom of interest, and to list the medications she had used for that specific disease/symptom. The mother also listed the child’s use of medications during the first 6 months of life. Medications were coded using the Anatomical Therapeutic Chemical classification system (ATC). Medications containing paracetamol (N02BE01, N02AA59, N02AX52 and N02BE51) were extracted. Three of the medications contained other active

1
2
3 ingredients, namely codeine (N02AA59), tramadol (N02AX52) and caffeine (N02BE51). To
4
5 distinguish between prenatal versus infant paracetamol exposure, we classified mutually
6
7 exclusive exposure categories: no exposure, prenatal exposure only, infant exposure only,
8
9 both prenatal and infant exposure.
10

11 12 13 14 Outcomes

15
16 We examined two asthma outcomes based on the MoBa questionnaires and one
17
18 outcome based on dispensed asthma medications: 1) We defined current asthma at 3 years as
19
20 a “yes” in response to current asthma in combination with use of short- or long-acting beta
21
22 (2)-agonists (R03AC) and/or inhaled corticosteroids (R03BA) in the past year reported in the
23
24 3 year questionnaire. 2) Current asthma at 7 years was defined according to three positive
25
26 criteria reported in the 7 year questionnaire: a positive report of ever asthma, experiencing
27
28 asthma symptoms the past year and using medications for asthma in the past year. 3) A
29
30 separate asthma definition at age 7 was based on information from the prescription registry. A
31
32 child was regarded as having asthma if he/she had a dispensed asthma medication during the
33
34 past year in addition to a second dispensed prescription within one year after the first. Asthma
35
36 medications included R03AC, R03BA, R03AK, and R03DC.
37
38
39
40
41
42

43 Other variables

44
45 Maternal characteristics included age, parity, education, pre-pregnancy body mass
46
47 index (weight in kilograms divided by measured height in meters squared), smoking during
48
49 pregnancy, asthma, respiratory tract infections/influenza during pregnancy, pain during
50
51 pregnancy, fever during pregnancy and use of antibiotics during pregnancy. Child
52
53 characteristics included the child’s gender, birth weight, breastfeeding the first 6 months,
54
55 respiratory tract infections the first 6 months, body mass index at 6 months and use of
56
57
58
59
60

1
2
3 antibiotics the first 6 months. We classified antibiotics for systemic use based on ATC codes
4
5 J01A-J01X.
6
7

8 9 Statistical analyses

10
11 The analysis consisted of several steps. First, we examined the associations between
12 prenatal and infant paracetamol exposure with asthma development using log-linear
13 regression, reporting relative risks (RR) and 95% confidence intervals (CI). The multivariable
14 analyses adjusted for all the potential confounding factors in Table 1. We used cluster
15 variance estimation to account for siblings in the analyses. In order to evaluate whether
16 maternal history of asthma was an effect modifier on the multiplicative scale, we included
17 product terms in the multivariable regression models.
18
19

20
21 Secondly, we evaluated the likelihood of confounding by indication by focusing on
22 three common indications for use of paracetamol in pregnancy: pain, fever and respiratory
23 tract infections/influenza. There was little a priori evidence that maternal pain during
24 pregnancy might be associated with asthma development in the offspring. However, we
25 wanted to evaluate whether maternal use of paracetamol for different/partly unrelated
26 indications yielded similar associations with asthma development in the offspring. We
27 categorized mutually exclusive exposure categories of mothers who had experienced the
28 different indications with and without the use of paracetamol. In order to evaluate whether
29 these maternal indications acted as effect modifiers on the multiplicative scale, we included
30 product terms in the multivariable regression models. Third, we conducted sensitivity
31 analyses to explore unmeasured confounding by background factors influencing the
32 propensity of paracetamol exposure by examining maternal use of paracetamol the last 6
33 months before pregnancy, maternal use of paracetamol the first 6 months after pregnancy and
34 the father's paracetamol use.
35
36
37
38
39
40
41
42
43
44
45
46
47
48
49
50
51
52
53
54
55
56
57
58
59
60

1
2
3 Fourth, since paracetamol and ibuprofen are used for similar indications, information
4
5 about maternal use of ibuprofen during pregnancy was extracted (M01AE01). We
6
7 subsequently evaluated prenatal exposure to paracetamol and ibuprofen in combination
8
9 (neither, only ibuprofen, only paracetamol, both ibuprofen and paracetamol), to evaluate
10
11 whether maternal use of these two medications during pregnancy yielded the same association
12
13 with asthma development.
14
15

16 There were approximately 10-15% of observations with missing information in the
17
18 multivariable analyses. We therefore conducted multiple imputation by chained equations,
19
20 imputing a total of 20 datasets.
21
22

23 All of the p-values presented are two-sided. We conducted the analyses using Stata
24
25 version 13 (Statacorp, Texas).
26
27
28
29
30
31
32
33
34
35
36
37
38
39
40
41
42
43
44
45
46
47
48
49
50
51
52
53
54
55
56
57
58
59
60

Results

A total of 53,169 children were included in the analysis of current asthma at 3 years, 25,394 in the evaluation of current asthma at 7 years, and 45,607 in the evaluation of dispensed asthma medications at 7 years (Figure 1). The characteristics among individuals with and without the necessary follow-up information are given in Supplementary Table 1. A total of 27.9% of children were only exposed to paracetamol during pregnancy, 15.5% only during infancy, while 19.1% were exposed both during pregnancy and infancy. The distribution of characteristics by prenatal and infant paracetamol exposure is given in Table 1 (Table 1 here).

A total 5.7% of children had current asthma at 3 years, 5.1% had current asthma at 7 years while 4.8% had dispensed asthma medications at 7 years. There were independent associations between asthma at 3 years with prenatal paracetamol exposure (adj.RR 1.13; 95% CI: 1.02-1.25) and use of paracetamol during infancy (adj.RR 1.29; 95% CI: 1.16-1.45) (Table 2) (Table 2 here). Similar results were observed for current asthma at 7 years and dispensed asthma medications at 7 years (Table 2).

There was no strong evidence of multiplicative interaction between prenatal and infant paracetamol exposure on asthma development ($p\text{-values}_{\text{interaction}} > 0.07$). Separate analyses of prenatal and infant paracetamol exposure with asthma development are included in Supplementary Table 2. The results indicated a slightly stronger association between children exposed to paracetamol during two time periods of pregnancy with asthma development (Supplementary Table 2).

Our findings indicated evidence of an interaction by maternal history of asthma on the association between infant paracetamol exposure and asthma at 3 years ($p\text{-value}_{\text{interaction}} < 0.01$) (Supplementary Table 3). However, there was no strong evidence of an interaction by maternal history of asthma for the association between prenatal paracetamol and asthma

1
2
3 development, or the association between infant paracetamol exposure and the asthma
4
5 outcomes at 7 years ($p\text{-values}_{\text{interaction}} > 0.1$) (Supplementary Table 3).
6

7 We evaluated respiratory tract infections/influenza, fever and pain during pregnancy as
8
9 common indications for using paracetamol. Prenatal paracetamol exposure for these three
10
11 indications yielded similar associations with asthma development (Table 3) (Table 3 here).
12
13 Furthermore, pain showed a positive association with asthma development without the use of
14
15 paracetamol (Table 3). The strongest association was seen if the mother used paracetamol
16
17 during pregnancy for more than one indication, adj.RR 1.94 (95% CI: 1.58-2.37) for current
18
19 asthma at 3 years (Table 3). In order to further evaluate the potential role of confounding by
20
21 indication, we conducted stratified analyses of the association between prenatal paracetamol
22
23 exposure and asthma development by the three indications in turn (Supplementary Table 4).
24
25 The results indicated no strong evidence of multiplicative interaction ($p\text{-values}_{\text{interaction}} > 0.3$).
26
27 Likewise, we also conducted a stratified analysis of the association between infant
28
29 paracetamol exposure and asthma development by the child's experience of respiratory tract
30
31 infections the first 6 months of life (Supplementary Table 5). The results indicated no
32
33 evidence of multiplicative interaction ($p\text{-values}_{\text{interaction}} > 0.5$). There was no strong evidence
34
35 of an association between paternal paracetamol use and asthma in the offspring
36
37 (Supplementary Table 6). Likewise, maternal paracetamol use during the last 6 months before
38
39 pregnancy, or the first 6 months after delivery, showed no strong evidence of an association
40
41 with asthma in the offspring (Supplementary Table 6).
42
43
44
45
46

47 Prenatal exposure to ibuprofen was only reported for 5.8% of children. Prenatal
48
49 exposure to ibuprofen only (no exposure to paracetamol) showed some evidence of an
50
51 association with current asthma at 3 years, adj.RR 1.31 (95% CI: 1.00,1.72), while there was
52
53 weak evidence for a positive association with current asthma at 7 years and dispensed asthma
54
55 medications at 7 years (Table 4) (Table 4 here).
56
57
58
59
60

1
2
3 The results from the multiple imputation analyses were similar to the complete case
4 analyses (Supplementary Table 7). A sensitivity analysis of prenatal paracetamol exposure
5 excluding mothers who had reported multiple medications and indicated multiple time periods
6 (during and outside of pregnancy), approximately 9% of mothers, also indicated similar
7 associations (data not shown).
8
9
10
11
12
13
14
15
16
17
18
19
20
21
22
23
24
25
26
27
28
29
30
31
32
33
34
35
36
37
38
39
40
41
42
43
44
45
46
47
48
49
50
51
52
53
54
55
56
57
58
59
60

For Review Only

Discussion

This large-scale prospective observational study indicated that both prenatal and infant paracetamol exposure showed independent positive associations with asthma development. Furthermore, the association between prenatal paracetamol exposure and asthma development was similar if used for respiratory tract infections/influenza, fever or pain. Prenatal ibuprofen exposure was only associated with an early asthma phenotype.

Comparison with previous studies

Our finding that prenatal and infant paracetamol exposure is positively associated with asthma development is largely in accordance with results summarized in meta-analyses.(3-5) However, most studies in these meta-analyses did not address confounding by indication.

Of the three previous studies examining prenatal paracetamol exposure and asthma development that adjusted for infections/antibiotics during pregnancy, all reported a positive association.(7, 10, 11) The magnitude of the associations in these studies ranged between 1.15 to 1.29.(7, 10, 11) Among previous studies of infant paracetamol exposure and asthma development that adjusted for the child's experience of respiratory tract infections (6, 8, 16-19), three studies reported a positive association (6, 16, 19). These studies reported that paracetamol exposure during infancy was associated with a doubling in the risk of asthma development.(6, 16, 19) However, one of these studies indicated that the association was restricted to girls.(6) Our study is the first to evaluate the relative importance of prenatal versus infant paracetamol exposure able to account for common indications during both exposure periods. This allowed us to show that both prenatal and infant paracetamol exposure had independent positive associations with asthma development after adjustment for confounding by indication during both exposure periods.

1
2
3 Two previous studies examined prenatal ibuprofen exposure and asthma development.
4
5 (8, 11) One of these studies examined both prenatal and infant ibuprofen exposure, reporting a
6
7 positive association with infant ibuprofen exposure, adjusted odds ratio 1.20 (95 %
8
9 confidence interval 1.02 to 1.40), but no strong evidence of an association with prenatal
10
11 ibuprofen exposure, 1.17 (0.78-1.76).(8) Our results indicated a weak evidence for a positive
12
13 association between prenatal ibuprofen exposure with asthma at 3 years and no strong
14
15 evidence for an association with asthma at 7 years. We could not evaluate infant ibuprofen
16
17 exposure as too few were exposed (0.1%).
18
19

20 21 22 Interpretation of main findings 23

24
25 Pregnant women who have asthma might be more likely to choose paracetamol as an
26
27 analgesic/antipyretic compared to acetylsalicylic acid and other nonsteroidal anti-
28
29 inflammatory drugs due to sensitization.(20) However, our results provided no strong
30
31 evidence of an effect modification of maternal history of asthma on the observed associations.
32
33

34 This is the first study to address maternal conditions in pregnancy with and without the
35
36 use of paracetamol in relation to asthma in the offspring. Maternal paracetamol use for
37
38 respiratory tract infections/influenza, fever or pain all showed a positive association with
39
40 asthma in the offspring, while maternal report of pain was the only indication that was
41
42 positively associated with asthma in the offspring if the mother did not use paracetamol. Pain
43
44 is highly subjective and likely influenced by a number of factors, and these findings therefore
45
46 need to be replicated and explored in depth. One might speculate that maternal pain during
47
48 pregnancy is a potential source of stress. A possible explanation for our finding is therefore
49
50 the association between prenatal exposure to stress and asthma development.(21-24)
51
52
53 However, our observed associations of prenatal and infant paracetamol exposure with asthma
54
55
56
57
58
59
60

1
2
3 development might also reflect the severity of the condition leading to paracetamol use. It was
4
5 not possible to further evaluate this using the information available.
6

7 We cannot exclude the possibility that the association of prenatal and infant
8
9 paracetamol exposure with asthma development might be partly mediated by later
10
11 paracetamol exposure.
12

13
14 The evaluation of maternal paracetamol use outside of pregnancy and paternal
15
16 paracetamol use was motivated by a negative controls approach.(12, 13) Evaluation of these
17
18 negative controls allowed an assessment of the likelihood of unmeasured confounding by
19
20 characteristics that might influence the propensity for using paracetamol. Only one study has
21
22 previously evaluated maternal paracetamol use after pregnancy and paternal paracetamol
23
24 use.(25) In line with the findings from this previous study, we found no strong evidence for an
25
26 association between maternal paracetamol use outside of pregnancy or paternal paracetamol
27
28 use with asthma in the offspring, supporting the conclusion that the results were not caused by
29
30 underlying characteristics or health behavior.
31
32
33

34 If the observed association between paracetamol exposure and asthma development
35
36 reflects a true effect, proposed biological mechanisms include the ability of paracetamol to
37
38 induce oxidative stress, enhance Th2 cell polarization and mediation of non-eosinophilic
39
40 inflammatory responses.(26, 27) Increased oxidative stress during pregnancy and infancy is
41
42 hypothesized to increase the risk of asthma.(28) This hypothesis is also supported by studies
43
44 reporting an inverse association between maternal antioxidant intake during pregnancy and
45
46 asthma in the offspring.(29, 30) Results from the Avon Longitudinal Study of Parents and
47
48 Children also indicate that maternal antioxidant gene polymorphism may modify the
49
50 association between prenatal paracetamol exposure and asthma development.(7)
51
52
53
54 Ibuprofen is used for many of the same indications as paracetamol. According to Norwegian
55
56 guidelines , ibuprofen is not recommended for pregnant women and infants who weigh less
57
58
59
60

1
2
3 than 10 kilograms.(9) Based on our results, we could not conclude with certainty that prenatal
4
5 ibuprofen exposure did not have a similar positive association with asthma development as
6
7 observed for prenatal paracetamol exposure, since we likely had limited power to detect an
8
9 association with our outcomes at 7 years. Ibuprofen is a COX-1 inhibitor, contributing to an
10
11 up-regulation of leukotrienes, thought to play a role in asthma pathogenesis.(31)
12

13 14 Strengths and limitations

15
16 Strengths of the current study include the size, detailed evaluation of different
17
18 indications for prenatal paracetamol exposure, evaluation of prenatal ibuprofen exposure, in
19
20 addition to the evaluation of maternal paracetamol use outside of pregnancy and paternal
21
22 paracetamol use as negative controls. This is the first study comparing the association
23
24 between prenatal exposure to different indications and use of paracetamol for different
25
26 indications with development of asthma, and the first study examining the relative importance
27
28 of prenatal versus infant paracetamol exposure in relation to asthma development that was
29
30 able to adjust for confounding by indication during both exposure periods.
31
32

33
34 The main limitation of the information available in MoBa was the ability to account
35
36 for the amount paracetamol used and severity of the underlying indications. However, by
37
38 evaluating prenatal paracetamol exposure for more than one indication and during more than
39
40 one time period of pregnancy, we evaluated two approaches to distinguish between amounts
41
42 of exposure. The classification of prenatal and infant paracetamol exposure through
43
44 questionnaires could have resulted in misclassification. Due to the prospective data collection,
45
46 any misclassification of paracetamol exposure is unlikely to be differential by the child's
47
48 asthma status. Another limitation is that the information available for the child's use of
49
50 medications during the first 6 months of life did not include which specific condition the
51
52 medications had been used for. By using maternal report of the child's asthma status there
53
54 may also be misclassification of the outcome. However, maternal report that the child used
55
56
57
58
59
60

1
2
3 asthma medications in the past year on the 7 years questionnaire in MoBa compared well to
4 dispensed asthma medications in the prescription registry.(32) A comparison of MoBa
5 participants against all Norwegian women who gave birth during the inclusion period
6 indicated that several high risk groups might be underrepresented.(15) This might influence
7 the generalizability of our results.(33-35) Our study further required information from a
8 number of follow-up questionnaires. A comparison of eligible individuals with and without
9 the necessary follow-up information indicated that mothers of children with the necessary
10 follow-up information were older, were more likely to have higher education and were less
11 likely to smoke (Supplementary Table 1). We further evaluated bias due to loss to follow-up
12 by using dispensed asthma medications as an additional outcome, which showed similar
13 associations as the questionnaire based outcome.
14
15
16
17
18
19
20
21
22
23
24
25
26
27
28
29

30 **Conclusion**

31
32 Our study is by far the largest study to provide evidence that prenatal and infant
33 paracetamol exposure have independent positive associations with asthma development. Our
34 findings provided suggest that the associations could not be fully explained by confounding by
35 indication. Paracetamol is the most commonly used analgesic/antipyretic among pregnant
36 women and infants, and uncovering potential adverse effects is of public health importance.
37
38 Based on the inherent challenges in observational studies, evidence from a randomized
39 controlled trial would be beneficial.
40
41
42
43
44
45
46
47
48
49
50
51
52
53
54
55
56
57
58
59
60

Acknowledgements

Contributors: The study was initiated by M.C.M and W.N., and designed by M.C.M., W.N., S.E.H., and P.N. M.C.M. performed the statistical analysis and wrote the initial draft with supervision from W.N., S.E.H. and P.N. Ø.K. and G.D.S. contributed with invaluable support for data analyses, interpretation of findings and critical revision of the manuscript. W.N. and M.C.M. obtained the financial support. All authors had full access to data, reviewed and approved the final version of the article submitted for publication. M.C.M. will act as the guarantor of the manuscript. The references have been checked for accuracy and completeness by M.C.M. The authors are grateful to all families participating in the Norwegian Mother and Child Cohort Study.

Competing of interest: All authors report no conflict of interest.

References

1. Akinbami L. The state of childhood asthma, United States, 1980-2005. *Adv Data* 2006;1-24.
2. Lai CK, Beasley R, Crane J, Foliaki S, Shah J, Weiland S. Global variation in the prevalence and severity of asthma symptoms: phase three of the International Study of Asthma and Allergies in Childhood (ISAAC). *Thorax* 2009;**64**:476-83.
3. Cheelo M, Lodge CJ, Dharmage SC, Simpson JA, Matheson M, Heinrich J, et al. Paracetamol exposure in pregnancy and early childhood and development of childhood asthma: a systematic review and meta-analysis. *Arch Dis Child* 2014 ; **100**: 81-9.
4. Etminan M, Sadatsafavi M, Jafari S, Doyle-Waters M, Aminzadeh K, Fitzgerald JM. Acetaminophen use and the risk of asthma in children and adults: a systematic review and metaanalysis. *Chest* 2009;**136**:1316-23.
5. Evers S, Weatherall M, Jefferies S, Beasley R. Paracetamol in pregnancy and the risk of wheezing in offspring: a systematic review and meta-analysis. *Clin Exp Allergy* 2011;**41**:482-9.
6. Bakkeheim E, Mowinckel P, Carlsen KH, Haland G, Carlsen KC. Paracetamol in early infancy: the risk of childhood allergy and asthma. *Acta Paediatr* 2011;**100**:90-6.
7. Shaheen SO, Newson RB, Ring SM, Rose-Zerilli MJ, Holloway JW, Henderson AJ. Prenatal and infant acetaminophen exposure, antioxidant gene polymorphisms, and childhood asthma. *J Allergy Clin Immunol* 2010;**126**:1141-8.
8. Sordillo JE, Scirica CV, Rifas-Shiman SL, Gillman MW, Bunyavanich S, Camargo CA, Jr., et al. Prenatal and infant exposure to acetaminophen and ibuprofen and the risk for wheeze and asthma in children. *J Allergy Clin Immunol* 2015;**135**:441-8.
9. The Norwegian Medicines Agency. Use of prescription free pain killers. 2015. http://www.legemiddelverket.no/Bruk_og_raad/raadtilforbruker/Smertestillende/Sider/default.aspx. (Accessed 25.02.15).
10. Shaheen SO, Newson RB, Henderson AJ, Headley JE, Stratton FD, Jones RW, et al. Prenatal paracetamol exposure and risk of asthma and elevated immunoglobulin E in childhood. *Clin Exp Allergy* 2005;**35**:18-25.
11. Rebordosa C, Kogevinas M, Sorensen HT, Olsen J. Pre-natal exposure to paracetamol and risk of wheezing and asthma in children: a birth cohort study. *Int J Epidemiol* 2008;**37**:583-90.
12. Richmond RC, Al-Amin A, Smith GD, Relton CL. Approaches for drawing causal inferences from epidemiological birth cohorts: a review. *Early Hum Dev* 2014;**90**:769-80.
13. Smith GD. Assessing intrauterine influences on offspring health outcomes: can epidemiological studies yield robust findings? *Basic Clin Pharmacol Toxicol* 2008;**102**:245-56.
14. Magnus P, Irgens LM, Haug K, Nystad W, Skjaerven R, Stoltenberg C. Cohort profile: the Norwegian Mother and Child Cohort Study (MoBa). *Int J Epidemiol* 2006;**35**:1146-50.
15. Nilsen RM, Vollset SE, Gjessing HK, Skjaerven R, Melve KK, Schreuder P, et al. Self-selection and bias in a large prospective pregnancy cohort in Norway. *Paediatr Perinat Epidemiol* 2009;**23**:597-608.
16. Kreiner-Moller E, Sevelsted A, Vissing NH, Schoos AM, Bisgaard H. Infant acetaminophen use associates with early asthmatic symptoms independently of respiratory tract infections: the Copenhagen Prospective Study on Asthma in Childhood 2000 (COPSAC(2000)) cohort. *J Allergy Clin Immunol* 2012;**130**:1434-6.
17. Lowe AJ, Carlin JB, Bennett CM, Hosking CS, Allen KJ, Robertson CF, et al. Paracetamol use in early life and asthma: prospective birth cohort study. *BMJ* 2010;**341**:c4616.
18. Schnabel E, Heinrich J. Respiratory tract infections and not paracetamol medication during infancy are associated with asthma development in childhood. *J Allergy Clin Immunol* 2010;**126**:1071-3.
19. Wickens K, Beasley R, Town I, Epton M, Pattemore P, Ingham T, et al. The effects of early and late paracetamol exposure on asthma and atopy: a birth cohort. *Clin Exp Allergy* 2011;**41**:399-406.
20. Simon RA, Dazy KM, Waldram JD. Aspirin-exacerbated respiratory disease: characteristics and management strategies. *Expert Rev Clin Immunol* 2015;**11**:805-17.
21. Cookson H, Granell R, Joinson C, Ben-Shlomo Y, Henderson AJ. Mothers' anxiety during pregnancy is associated with asthma in their children. *J Allergy Clin Immunol* 2009;**123**:847-53.

- 1
2
3 22. Fang F, Hoglund CO, Arck P, Lundholm C, Langstrom N, Lichtenstein P, et al. Maternal bereavement and childhood asthma-analyses in two large samples of Swedish children. *PLoS One* 2011;**6**:e27202.
- 4
5
6 23. Kozyrskyj AL, Mai XM, McGrath P, Hayglass KT, Becker AB, Macneil B. Continued exposure to maternal distress in early life is associated with an increased risk of childhood asthma. *Am J Respir Crit Care Med* 2008;**177**:142-7.
- 7
8
9 24. Wright RJ, Cohen S, Carey V, Weiss ST, Gold DR. Parental stress as a predictor of wheezing in infancy: a prospective birth-cohort study. *Am J Respir Crit Care Med* 2002;**165**:358-65.
- 10
11 25. Shaheen SO, Newson RB, Smith GD, Henderson AJ. Prenatal paracetamol exposure and asthma: further evidence against confounding. *International journal of epidemiology*. 2010;**39**:790-4.
- 12
13 26. Grainge CL, Davies DE. Epithelial injury and repair in airways diseases. *Chest* 2013;**144**:1906-12.
- 14
15 27. Nassini R, Materazzi S, Andre E, Sartiani L, Aldini G, Trevisani M, et al. Acetaminophen, via its reactive metabolite N-acetyl-p-benzo-quinoneimine and transient receptor potential ankyrin-1 stimulation, causes neutrophilic inflammation in the airways and other tissues in rodents. *FASEB J* 2010;**24**:4904-16.
- 16
17 28. Patelarou E, Giourgouli G, Lykeridou A, Vrioni E, Fotos N, Siamaga E, et al. Association between biomarker-quantified antioxidant status during pregnancy and infancy and allergic disease during early childhood: a systematic review. *Nutr Rev* 2011;**69**:627-41.
- 18
19 29. Devereux G, Turner SW, Craig LC, McNeill G, Martindale S, Harbour PJ, et al. Low maternal vitamin E intake during pregnancy is associated with asthma in 5-year-old children. *Am J Respir Crit Care Med* 2006;**174**:499-507.
- 20
21 30. Martindale S, McNeill G, Devereux G, Campbell D, Russell G, Seaton A. Antioxidant intake in pregnancy in relation to wheeze and eczema in the first two years of life. *Am J Respir Crit Care Med* 2005;**171**:121-8.
- 22
23 31. Levy S, Volans G. The use of analgesics in patients with asthma. *Drug Saf* 2001;**24**:829-41.
- 24
25 32. Furu K, Karlstad O, Skurtveit S, Haberg SE, Nafstad P, London SJ, et al. High validity of mother-reported use of antiasthmatics among children: a comparison with a population-based prescription database. *J Clin Epidemiol* 2011;**64**:878-84.
- 26
27 33. Ebrahim S, Davey Smith G. Commentary: Should we always deliberately be non-representative? *Int J Epidemiol* 2013;**42**:1022-6.
- 28
29 34. Richiardi L, Pizzi C, Pearce N. Commentary: Representativeness is usually not necessary and often should be avoided. *Int J Epidemiol* 2013;**42**:1018-22.
- 30
31 35. Rothman K, Hatch E, Gallacher J. Representativeness is not helpful in studying heterogeneity of effects across subgroups. *Int J Epidemiol* 2014;**43**:633-4.
- 32
33
34
35
36
37
38
39
40
41
42
43
44
45
46
47
48
49
50
51
52
53
54
55
56
57
58
59
60

1
2
3 Figure legends:
4
5
6

7 Figure 1 Illustration of sample selection
8
9
10
11
12
13
14
15
16
17
18
19
20
21
22
23
24
25
26
27
28
29
30
31
32
33
34
35
36
37
38
39
40
41
42
43
44
45
46
47
48
49
50
51
52
53
54
55
56
57
58
59
60

For Review Only

Table 1. Characteristics by prenatal and infant paracetamol exposure
(N=53,169)

Characteristics	n	No exposure (%)	Prenatal exposure only (%)	Infant exposure only (%)	Both prenatal and infant exposure (%)
Maternal age, years					
<25	4,758	36.0	30.1	15.2	18.8
25-29	17,725	36.8	27.8	15.7	19.7
30-34	21,137	37.0	27.8	15.7	19.5
>=35	9,549	40.4	27.3	14.9	17.4
Maternal parity					
Primiparous	25,486	40.6	27.3	15.5	16.6
1	18,158	33.6	27.9	16.1	22.4
2	7,488	35.4	29.8	14.5	20.3
3 or more	2,037	38.9	28.8	14.3	17.9
Maternal education					
Less than high school	2,910	38.2	27.9	14.2	19.8
High school	14,175	37.6	29.9	14.1	18.4
Up to 4 years of college	22,841	36.1	27.7	15.9	20.3
More than 4 years of college	13,046	39.5	26.1	16.7	17.8
Missing	197	37.6	29.4	16.2	16.8
Maternal pre-pregnancy BMI					
Underweight (<18.5)	1,520	41.7	25.5	15.9	16.9
Normal weight (18.5-24.9)	34,625	39.2	26.8	16.0	18.0
Overweight (25-29.9)	11,247	33.8	30.1	14.9	21.2
Obese (>=30)	4,626	30.7	32.1	13.3	23.9
Missing	1,151	42.1	26.2	14.9	16.9
Maternal asthma					
No	49,338	38.2	27.6	15.5	18.7
Yes	3,831	28.5	31.9	15.2	24.4
Maternal RTI/influenza during pregnancy					
No	21,248	45.8	22.8	17.7	13.8
Yes	31,921	31.9	31.3	14.1	22.7
Maternal fever during pregnancy					
No	44,359	41.1	25.3	16.9	16.7
Yes	8,810	18.9	41.0	8.6	31.5
Maternal pain during pregnancy					
No	12,329	53.7	17.5	18.9	10.0
Yes	40,840	32.6	31.1	14.5	21.9
Maternal smoking during pregnancy					
No	48,947	37.8	27.6	15.6	19.0
Yes	3,970	32.6	31.8	14.1	21.4
Missing	252	38.5	31.8	11.1	18.7

Child gender					
Male	27,193	37.1	26.6	16.5	19.8
Female	25,976	37.8	29.3	14.5	18.4
Child birth weight, grams					
<2,500	1,332	38.5	28.8	12.8	19.9
2,500-2,999	4,505	39.6	26.3	16.0	18.1
3,000-3,499	15,523	38.3	27.6	15.6	18.5
3,500-4,000	20,023	37.1	27.9	15.7	19.3
>4000	11,764	36.0	28.8	15.2	20.0
Missing	22	31.8	27.3	13.6	27.3
Child breastfeeding the first 6 months					
None	1,360	34.6	29.8	13.4	22.2
Partial	28,191	35.3	28.5	15.6	20.7
Exclusive	23,618	40.2	27.1	15.6	17.1
Child RTI the first 6 months					
No	11,441	47.4	32.1	10.0	10.6
Yes	40,343	34.3	26.6	17.2	21.8
Missing	1,385	46.8	30.8	11.7	10.8
Child BMI at 6 months					
<16.1	12,573	38.4	28.0	15.1	18.6
16.1-17.0	12,559	37.2	28.1	15.5	19.2
17.1-18.0	12,743	37.1	28.4	15.4	19.1
>18.1	12,520	36.8	27.1	16.2	20.0
Missing	2,774	39.3	28.2	14.8	17.7
Prenatal and infant antibiotic exposure					
None	44,143	39.1	27.2	15.7	18.0
Prenatal only	6,387	28.8	33.7	12.9	24.6
Infant only	2,188	31.8	25.3	19.2	23.7
Prenatal and infant	451	23.7	31.0	14.2	31.0

BMI-body mass index; RTI - respiratory tract infections

The frequencies in this table are based on the study sample used to examine current asthma at 3 years.

RTI/influenza during pregnancy included maternal report of upper respiratory tract infections (ear, throat, sinus infections and/or colds) lower respiratory tract infections (pneumonia and/or bronchitis) and/or influenza.

Pain during pregnancy included maternal report of pelvic prolapse, back pain, neck/shoulder pain, migraine/head ache, fibromyalgia and/or unspecified muscle pain.

1
2
3
4
5
6
7
8
9
10
11
12
13
14
15
16
17
18
19
20
21
22
23
24
25
26
27
28
29
30
31
32
33
34
35
36
37
38
39
40
41
42
43
44
45
46
47
48
49

Table 2. The association of prenatal and infant paracetamol exposure with development of asthma

Current asthma at 3 years (N=53,169)				
Prenatal and infant paracetamol exposure	N	% case	Unadjusted RR(95%CI)	Adjusted RR (95% CI)^a
No exposure	19,912	4.4	1	1
Prenatal exposure only	14,837	5.9	1.33 (1.21-1.46)	1.13 (1.02-1.25)
Infant exposure only	8,246	6.5	1.47 (1.32-1.63)	1.29 (1.16- 1.45)
Both prenatal and infant exposure	10,174	7.5	1.71 (1.55-1.88)	1.27 (1.14- 1.41)
Current asthma at 7 years (N=25,394)				
Prenatal and infant paracetamol exposure	N	% case	Unadjusted RR(95%CI)	Adjusted RR (95% CI)^a
No exposure	9,905	3.9	1	1
Prenatal exposure only	7,240	5.6	1.44 (1.26-1.66)	1.27 (1.09- 1.47)
Infant exposure only	3,763	5.2	1.35 (1.14- 1.60)	1.24 (1.03 - 1.48)
Both prenatal and infant exposure	4,486	6.9	1.78 (1.54- 2.06)	1.49 (1.27- 1.75)
Dispensed asthma medications at 7 years (N=45,607)				
Prenatal and infant paracetamol exposure	N	% case	Unadjusted RR(95%CI)	Adjusted RR (95% CI)^a
No exposure	17,840	3.9	1	1
Prenatal exposure only	12,974	5.2	1.33 (1.20- 1.48)	1.17 (1.04- 1.31)
Infant exposure only	6,708	5.2	1.33 (1.17- 1.51)	1.27 (1.11-1.46)
Both prenatal and infant exposure	8,085	5.8	1.50 (1.33- 1.68)	1.26 (1.10- 1.43)

^a Associations adjusted for maternal age, parity, education, pre-pregnancy body-mass index, smoking during pregnancy, asthma, respiratory tract infections/influenza during pregnancy, fever during pregnancy, pain during pregnancy and antibiotic use during pregnancy, in addition to the child’s gender, birth weight, breastfeeding the first 6 months of life, respiratory tract infections by 6 months, body mass index at 6 months and use of antibiotics by 6 months.

RTI/influenza during pregnancy included maternal report of upper respiratory tract infections (ear, throat, sinus infections and/or colds) lower respiratory tract infections (pneumonia and/or bronchitis) and/or influenza.

Pain during pregnancy included maternal report of pelvic prolapse, back pain, neck/shoulder pain, migraine/head ache, fibromyalgia and/or unspecified muscle pain.

1
2
3
4
5
6
7 Infant paracetamol exposure reflects the child's use of paracetamol the first 6 months of life.
8

9
10 The results presented are based on a complete case analysis. A total of 47,173 children were included in the multivariable analysis of current
11 asthma at 36 months, 22,102 children in the analysis of current asthma at 7 years and 38,677 in the analysis of dispensed asthma medications at 7
12 years.
13
14
15
16
17
18
19
20
21
22
23
24
25
26
27
28
29
30
31
32
33
34
35
36
37
38
39
40
41
42
43
44
45
46
47
48
49

For Review Only

1
2
3
4
5
6
7
8
9
10
11
12
13
14
15
16
17
18
19
20
21
22
23
24
25
26
27
28
29
30
31
32
33
34
35
36
37
38
39
40
41
42
43
44
45
46
47
48
49

Table 3. The association of maternal indications and use of paracetamol during pregnancy with development of asthma in the offspring

Current asthma at 3 years (N=45,641)					
Exposure		n	% cases	Unadjusted RR (95%CI)	Adjusted RR (95% CI)^a
Did not use paracetamol	Did not experience indications	4,660	3.4	1	1
	Experienced RTI/influenza only	3,623	3.8	1.12 (0.90- 1.41)	1.07 (0.85- 1.34)
	Experienced fever ^b	659	3.1	0.91 (0.58-1.44)	0.88 (0.56- 1.40)
	Experienced pain only	8,499	5.5	1.63 (1.36- 1.95)	1.47 (1.23- 1.76)
	Experienced more than one indication	10,717	5.9	1.74 (1.47- 2.07)	1.60 (1.35- 1.91)
Used paracetamol	For RTI/influenza only	1,817	5.7	1.70 (1.33- 2.17)	1.51 (1.18- 1.93)
	For fever ^b	3,234	6.5	1.91 (1.56- 2.35)	1.58 (1.28- 1.94)
	For pain only	9,575	6.9	2.06 (1.74- 2.45)	1.73 (1.46- 2.06)
	For more than one indication	2,857	7.8	2.32 (1.90- 2.84)	1.94 (1.58- 2.37)
Current asthma at 7 years (N=21,910)					
Exposure		n	% cases	Unadjusted RR (95%CI)	Adjusted RR (95% CI)^a
Did not use paracetamol	Did not experience indications	2,377	3.5	1	1
	Experienced RTI/influenza only	1,810	4.3	1.23 (0.90- 1.68)	1.15 (0.83- 1.58)
	Experienced fever ^b	316	2.2	0.64 (0.30- 1.38)	0.65 (0.30- 1.38)
	Experienced pain only	4,075	4.5	1.29 (1.00- 1.67)	1.18 (0.90- 1.53)
	Experienced more than one indication	5,090	4.6	1.32 (1.03- 1.70)	1.23 (0.95- 1.58)
Used paracetamol	For RTI/influenza only	877	5.4	1.55 (1.09-2.21)	1.39 (0.97- 1.99)
	For fever ^b	1,418	5.5	1.58 (1.16- 2.15)	1.34 (0.98- 1.85)
	For pain only	4,623	6.2	1.81 (1.42- 2.30)	1.53 (1.19-1.96)
	For more than one indication	1,324	7.8	2.25 (1.69- 2.99)	1.91 (1.43- 2.55)
Dispensed asthma medications at 7 years (N=39,157)					
Exposure		n	% cases	Unadjusted RR (95%CI)	Adjusted RR (95% CI)^a
Did not use paracetamol	Did not experience indications	4,107	3.5	1	1
	Experienced RTI/influenza only	3,067	3.0	0.87 (0.67- 1.13)	0.83 (0.64- 1.08)
	Experienced fever ^b	558	2.2	0.62 (0.34- 1.11)	0.63 (0.35- 1.14)
	Experienced pain only	7,548	4.5	1.28 (1.06- 1.55)	1.21 (0.99- 1.47)
	Experienced more than one indication	9,267	5.0	1.42 (1.18- 1.71)	1.36 (1.13-1.65)

Used paracetamol	For respiratory RTI /influenza only	1,452	4.6	1.33 (1.00- 1.76)	1.24 (0.93- 1.66)
	For fever ^b	2,509	5.6	1.60 (1.28- 2.01)	1.41 (1.12- 1.79)
	For pain only	8,263	5.9	1.71 (1.42- 2.05)	1.51 (1.25- 1.83)
	For more than one indication	2,386	6.4	1.83 (1.46- 2.29)	1.59 (1.26- 2.01)

RTI- respiratory tract infections

^a Associations adjusted for maternal age, parity, education, pre-pregnancy body-mass index, smoking during pregnancy, asthma and antibiotic use during pregnancy

^b The group who reported fever or use of paracetamol for fever were allowed to also report RTI/influenza or use of paracetamol for RTI/influenza. All other categories are mutually exclusive.

RTI/influenza during pregnancy included maternal report of upper respiratory tract infections (ear, throat, sinus infections and/or colds) lower respiratory tract infections (pneumonia and/or bronchitis) and/or influenza.

Pain during pregnancy included maternal report of pelvic prolapse, back pain, neck/shoulder pain, migraine/head ache, fibromyalgia and/or unspecified muscle pain.

This analysis excluded individuals who used paracetamol for other/unspecified reason. This included 7,528 children in the evaluation of current asthma at 3 years, 3,484 children in the evaluation of current asthma at 7 years and 6,450 children in the evaluation of dispensed asthma medications at 7 years.

The results presented are based on a complete case analysis. A total of 43,789 children were included in the multivariable analysis of current asthma at 36 months, 20,800 children in the analysis of current asthma at 7 years and 37,783 in the analysis of dispensed asthma medications at 7 years.

1
2
3
4
5
6
7
8
9
10
11
12
13
14
15
16
17
18
19
20
21
22
23
24
25
26
27
28
29
30
31
32
33
34
35
36
37
38
39
40
41
42
43
44
45
46
47
48
49

Table 4. The association of maternal use of ibuprofen and paracetamol during pregnancy with development of asthma in the offspring

Current asthma at 3 years (N=53,169)				
Ibuprofen and paracetamol use during pregnancy	N	% case	Unadjusted RR (95%CI)	Adjusted RR (95% CI)^a
Neither	27,392	5.0	1	1
Only ibuprofen	766	7.0	1.41 (1.08- 1.84)	1.31 (1.00,1.72)
Only paracetamol	22,675	6.5	1.32 (1.23- 1.42)	1.11 (1.02, 1.19)
Both ibuprofen and paracetamol	2,336	6.6	1.34 (1.14- 1.58)	1.10 (0.93, 1.30)
Current asthma at 7 years (N=25,394)				
Ibuprofen and paracetamol use during pregnancy	N	% case	Unadjusted RR (95%CI)	Adjusted RR (95% CI)^a
Neither	13,290	4.2	1	1
Only ibuprofen	378	4.9	1.16 (0.74- 1.83)	1.16 (0.73, 1.83)
Only paracetamol	10,608	6.1	1.44 (1.29- 1.61)	1.26 (1.12, 1.43)
Both ibuprofen and paracetamol	1,118	6.1	1.45 (1.14- 1.86)	1.28 (1.00, 1.65)
Dispensed asthma medications at 7 years (N=45,607)				
Ibuprofen and paracetamol use during pregnancy	N	% case	Unadjusted RR (95%CI)	Adjusted RR (95% CI)^a
Neither	23,839	4.2	1	1
Only ibuprofen	709	4.8	1.13 (0.81- 1.58)	1.02 (0.73, 1.44)
Only paracetamol	19,139	5.5	1.29 (1.19- 1.40)	1.12 (1.03, 1.23)
Both ibuprofen and paracetamol	1,920	5.3	1.24 (1.02- 1.52)	1.03 (0.83, 1.26)

^a Associations adjusted for maternal age, parity, education, pre-pregnancy body-mass index, smoking during pregnancy, asthma, respiratory tract infections/influenza during pregnancy, pain during pregnancy, fever during pregnancy and antibiotic use during pregnancy

The results presented are based on a complete case analysis. A total of 51,011 children were included in the multivariable analysis of current asthma at 36 months, 24,114 children in the analysis of current asthma at 7 years and 44,009 in the analysis of dispensed asthma medications at 7 years.

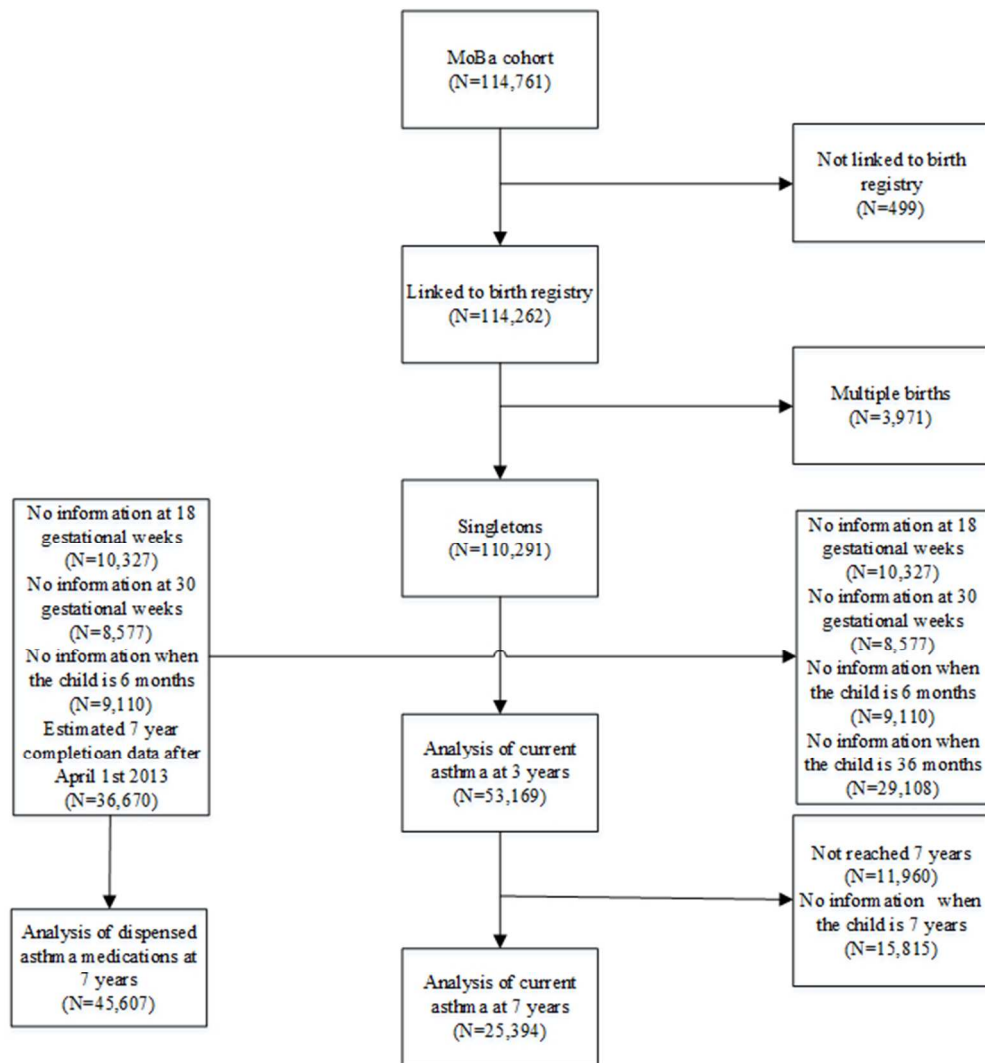


Figure 1 Illustration of sample selection