



Sallis, H., Evans, J., Wootton, R., Krapohl, E., Oldehinkel, A. J., Davey Smith, G., & Paternoster, L. (2017). Genetics of depressive symptoms in adolescence. *BMC Psychiatry*, 17, Article 321.
<https://doi.org/10.1186/s12888-017-1484-y>

Publisher's PDF, also known as Version of record

License (if available):
CC BY

Link to published version (if available):
[10.1186/s12888-017-1484-y](https://doi.org/10.1186/s12888-017-1484-y)

[Link to publication record on the Bristol Research Portal](#)
PDF-document

University of Bristol – Bristol Research Portal

General rights


This document is made available in accordance with publisher policies. Please cite only the published version using the reference above. Full terms of use are available:
<http://www.bristol.ac.uk/red/research-policy/pure/user-guides/brp-terms/>

RESEARCH ARTICLE

Open Access



Genetics of depressive symptoms in adolescence

Hannah Sallis^{1,2,3*} , Jonathan Evans², Robyn Wootton³, Eva Krapohl⁴, Albertine J Oldehinkel⁵, George Davey Smith¹ and Lavinia Paternoster¹

Abstract

Background: Despite many attempts to understand the genetic architecture of depression, little progress has been made. The majority of these studies, however, have been carried out in adults and do not account for the potential influence of development.

Methods: The Avon Longitudinal Study of Parents and Children (ALSPAC) is a longitudinal pregnancy cohort which recruited participants between April 1991 and December 1992. Analyses were replicated in two independent European cohorts. Genome-wide complex trait analysis (GCTA) software was used to investigate SNP-heritability (h^2_{SNP}) of depression across adolescence, the role of puberty was investigated by stratifying these estimates according to pubertal onset. Genome-wide association studies were performed to identify genetic variants associated with depression at different stages of development.

Results: Heritability was estimated between the ages of 11 and 18 with sample sizes ranging from 3289 to 5480. Heritability was low with an apparent peak was found at age 13 ($h^2 = 0.17$, $p = 0.006$). Confidence intervals around these estimates suggest an upper-bound to h^2_{SNP} of around 30%. A variant located on chromosome 7 was found to be associated with depressive symptoms at age 13 in ALSPAC (rs138191010: $\beta = 0.142$, $p = 2.51 \times 10^{-8}$), although this was not replicated.

Conclusions: Although power is a potential limitation, the observed patterns provide interesting hypotheses surrounding the heritability of depression at different developmental stages. We found substantially lower estimates for depressive symptoms at age 11 (0.07) compared to those previously estimated in adults (0.21). We also found a peak in heritability at age 13. These findings suggest environmental factors are likely to be more important in the aetiology of depressive symptoms in early adolescence than in adulthood.

Keywords: ALSPAC, Adolescent depression, Heritability, GWAS

Background

Despite many attempts to understand the genetic architecture of depression, progress has been slow, particularly when compared with other complex disorders. The Psychiatric Genomics Consortium (PGC) recently identified 108 risk loci for schizophrenia [1], whereas corresponding analyses performed for major depressive disorder (MDD) failed to find any robustly associated loci [2]. More recently,

however, studies have utilised data from the UK Biobank and 23andMe which resulted in discovery samples of over 100,000 participants of European ancestry [3, 4]. The China, Oxford and Virginia Commonwealth University Experimental Research on Genetic Epidemiology (CONVERGE) consortium applied sparse whole genome sequencing to a sample of over 5000 cases of major depression and 5000 controls amongst Han Chinese women [5]. These studies report finding several genetic variants associated with depressive symptoms measured in adults.

Both phenotypic and/or genetic heterogeneity may contribute to the slow progress in identifying genetic loci robustly associated with depression [6]. Work has focused on dissecting the phenotype, with studies focusing on age

* Correspondence: Hannah.sallis@bristol.ac.uk

¹MRC Integrative Epidemiology Unit, Population Health Sciences, Bristol Medical School, University of Bristol, Barley House, Oakfield Grove, Bristol BS8 2BN, UK

²Centre for Academic Mental Health, Population Health Sciences, Bristol Medical School, University of Bristol, Bristol, UK

Full list of author information is available at the end of the article



at onset or subgroups including early onset or recurrent depression, in an attempt to understand the genetic architecture [6–8].

Heritability is the proportion of variation in a phenotype attributable to genetic differences. A meta-analysis of twin studies estimated the heritability of MDD in adults to be 0.37 (95% CI: 0.31, 0.42) [9], while recent work by the PGC used SNP-based methods implemented by the Genome-wide Complex Trait Analysis (GCTA) software [10] to estimate a common SNP-heritability (h^2_{SNP}) of 0.21 [11]. Although these estimates may at first appear inconsistent, the estimate from twin studies is expected to be higher as they take into account variation across the entire genome, whereas h^2_{SNP} estimates incorporate only common variants captured by SNPs included on genotyping platforms.

The majority of these studies of depression have been carried out in adults. However, a recent publication by Nivard et al. [12] investigated symptoms of anxiety and depression across the lifecourse using data from the Netherlands Twin Registry (NTR), suggesting heritability might vary according to age. The study combined data from 49,524 twins whose ages ranged from 3 to 63. Heritability estimates calculated in this study showed fluctuations from early life until the early 20s (highest at 0.69, aged 3), after age 20 heritability remained relatively stable at around 0.5.

Nivard et al. [12] found a substantial genetic component to childhood depression, with a distinct drop in heritability from 0.58 to 0.37 at age 12. Estimates increased again throughout adolescence and reached a peak of 0.53 at age 18. This is an interesting contrast to findings from many other twin studies which suggest a minor genetic component to depression in early life and increasing heritability with age, the heritability in late adolescence being comparable with that of adult depression [13–17]. However, the drop in heritability found in the Nivard study might be confounded by a switch in reporting method, as depression measures switched from parent- to self-reported questionnaires.

In addition to coinciding with a switch in reporting method, the timing of this change in heritability is interesting as it coincides with pubertal onset. At age 12, many participants are likely to be nearing the onset of puberty, if they have not entered it already. Pubertal status and depression are highly associated, with a 1 year prevalence of depression of around 1% in pre-pubertal children, rising to 4–5% in mid to late adolescence [18]. Prior to puberty the prevalence of depression is similar in both males and females, however after pubertal onset this rises more rapidly among females. This has prompted some to hypothesise that changes during puberty, or the timing of pubertal onset, could be related to the onset of depressive symptoms [19–21]. Although

mechanisms are unclear, biological theories suggest earlier puberty and the hormonal changes associated with this, such as increasing levels of dehydroepiandrosterone (DHEA), may act as a trigger for some underlying vulnerability [22, 23]. Alternatively, psychosocial theories hypothesise that depression is a social consequence of the early onset of puberty compared to peers [24].

We aim to investigate patterns of heritability across adolescence using data from the Avon Longitudinal Study of Parents and Children (ALSPAC), which has both parent- and self-reported measures of depressive symptoms available at regular intervals during this important developmental period.

ALSPAC is a prospective birth cohort started in the early 1990s, which holds information on a number of measures, including depression and pubertal status. This includes a combination of parent- and self-reported depression measures at a variety of time points, which enabled us to investigate the change in heritability found by Nivard et al. [12]. Genotyping data are available on a large number of ALSPAC participants, enabling us to estimate h^2_{SNP} directly at different ages using restricted maximum likelihood (REML) methods and to attempt to identify genetic variants associated with depression measures across a range of ages.

Methods

Avon longitudinal study of parents and children (ALSPAC)

ALSPAC is a longitudinal pregnancy cohort which aimed to recruit all pregnant women in the former county of Avon with an expected due date between April 1991 and December 1992. Detailed information has continued to be collected on mothers, partners and children in the cohort, this process has been described in detail elsewhere [25, 26]. Ethical approval for the study was obtained from the ALSPAC Ethics and Law Committee and the Local Research Ethics Committees. A fully searchable data dictionary with information on all available measures is available at <http://www.bris.ac.uk/alspac/researchers/data-access/data-dictionary/>.

Depression measures

Symptoms of depression in the ALSPAC children were measured throughout childhood and adolescence using a combination of both parent- and self-reported responses to the Short Moods and Feelings Questionnaire (SMFQ) [27]. The SMFQ consists of 13 phrases relating to the feelings and actions of participants in the previous 2 weeks, which they are asked to rate as ‘most of the time’, ‘some of the time’ or ‘not at all’ (scoring 2, 1 or 0, respectively). A higher score on the SMFQ corresponds to a greater level of depressive symptoms.

Timing of SMFQ measurements is described in detail in Additional file 1: Materials and Methods. For the

purposes of these analyses and to avoid bias from shift in reporting, we focus on self-reported responses.

Pubertal status

Pubertal status was regularly measured in ALSPAC, between 7.5 to 18 years. Tanner Stages were used to measure pubertal stage in both males and females [28, 29]. In this analysis we have used the Tanner Stage corresponding to pubic hair development for both males and females to assess pubertal onset.

Further details on the derivation of pubertal onset are described in Additional file 1: Materials and Methods.

Genotyping and GRM

Directly genotyped data were available on 8237 children and 477,482 SNPs. A genetic relatedness matrix (GRM) was estimated for this sample. Full details can be found in Additional file 1: Materials and Methods.

Statistical analysis

Calculating h_{SNP}^2

h_{SNP}^2 was calculated using the REML method implemented within the GCTA software [10]. Estimates of heritability were calculated and plotted for each age at which we had a self-reported measure of depressive symptoms. Given our interest in investigating whether there is a drop in heritability around puberty as seen in Nivard et al. [12], we focused on ages 11, 13, and 18. In addition to estimating h_{SNP}^2 at each of these ages, we performed exploratory analyses stratified by sex and also pubertal status when participants were aged 11 and 13.

For each of our h_{SNP}^2 estimates, analyses were adjusted for age. Where analyses were performed on the overall sample, we also adjusted for sex.

As a sensitivity analysis, we re-calculated h_{SNP}^2 estimates for our main ages of interest, restricting to participants with data on pubertal status. Given that the distribution of SMFQ scores varied according to age, we also applied a quantile normal transformation and used these transformed scores in the analysis.

Power calculations were performed for our analyses using the GCTA-GREML power calculator available at <http://cnsgenomics.com/shiny/gctaPower/> [30].

Genome-wide association analysis (GWAS)

Genome-wide association analyses were carried out for self-reported depressive symptoms at ages 11, 13, and 18 and performed using SNPTEST v2.5 [31]. Analyses were adjusted for age and sex. Both the REML and GWAS analyses were restricted to participants of a European ancestry.

Replication

A look up of any SNP achieving genome-wide significance ($p < 5 \times 10^{-8}$) in this analysis was performed in both the TRacking Adolescents' Individual Lives Survey (TRAILS) [32, 33] and the Twins Early Development Study (TEDS) [34]. Information on both cohorts can be found in Additional file 1: Materials and Methods.

Results

The number of ALSPAC participants with complete information on both depression and genotype ranged from 5480 at age 11 to 3289 at age 18 (those also with puberty data were lower, 3759 and 1724 at 11 and 18, respectively). There were slightly more females than males and this increased slightly with age, (49.4% males at age 11 reducing to 43.0% at 18, Table 1).

Proportion of participants in the pre-pubertal category differed according to sex. At ages 10 and 13, there were a greater proportion of females who had experienced the onset of puberty compared with males ($p < 0.001$ in both cases, Table 1). The proportion of the overall sample reaching onset increased from 37.3% at age 10 to 92.6% at age 13. By the time the sample was aged 18, 99% of participants reported onset of puberty.

Estimating h_{SNP}^2

Overall sample

h_{SNP}^2 estimates of child self-reported SMFQ ranged from 2% to 17%, with a peak around age 13 ($h^2 = 0.17$,

Table 1 Sample Characteristics

| | Age 11 (N = 5480) | Age 13 (N = 5055) | Age 18 (N = 3289) |
|---------------------------------|----------------------|----------------------|----------------------|
| Mean age in months (SD) | 127.7 (3.02) | 153.6 (2.73) | 213.9 (4.43) |
| Males N (%) | 2706 (49.4) | 2462 (48.7) | 1414 (43.0) |
| SMFQ score (LQ-UQ) ¹ | 3 (1–6) | 3 (1–5) | 5 (3–9) |
| Subset with puberty data - N | 3759 | 3147 | 1724 |
| Puberty – number post-onset (%) | Overall | 1402 (37.3) | 1723 (99.9) |
| | Male | 525 (31.9) | 1240 (88.5) |
| | Female | 877 (41.5) | 1673 (95.8) |

¹ Median child reported SMFQ score with lower and upper quartiles reported due to skew in score

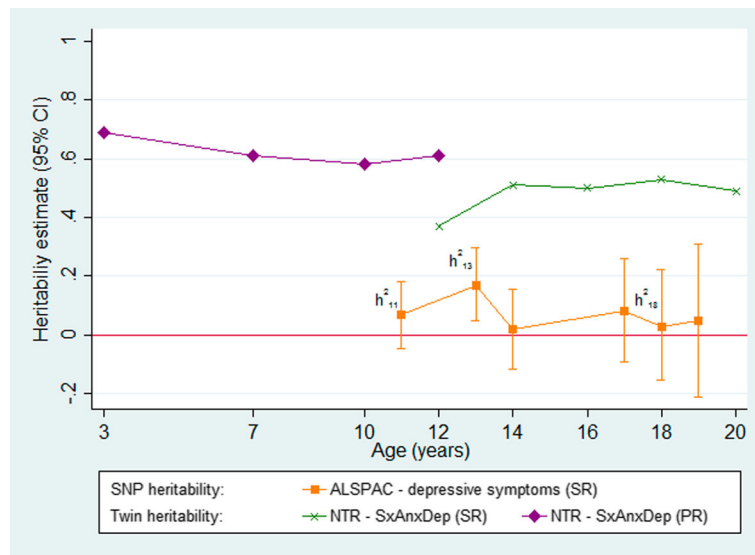


Fig. 1 Heritability estimates of depressive symptoms measured during childhood and adolescence in NTR and ALSPAC

$p = 0.006$) (Fig. 1, Table 2). However standard errors for these estimates are large and overlapping, with only the estimate at age 13 showing robust evidence for a non-zero h^2_{SNP} . The pattern is consistent across both parent- and self-reported measures, although parent-reported measures suggested lower estimates of h^2_{SNP} at comparable time points (Figs 1 and Additional file 1: Fig. S1). Given our interest in investigating the pattern of effects found by Nivard et al. [12], we focus on self-report data from 3 time points – ages 11, 13 and 18.

Stratified by sex

When we perform exploratory sex-stratified analysis, the h^2_{SNP} peak occurs at age 13 in males ($h^2 = 0.30$, $p = 0.020$), but at 18 in females ($h^2 = 0.18$, $p = 0.286$), whereas the h^2_{SNP} estimates for males at age 18 and females at 13 are close to zero (Table 2). However, standard errors for these estimates are large and overlapping.

If real, these differences might be explained by differences in pubertal timing of males and females, we therefore investigated the effect of puberty on h^2_{SNP} estimates.

Stratified by puberty

To investigate whether pubertal timing could explain the differences in h^2_{SNP} estimates at different times in males and females we performed exploratory analysis stratified according to pre- and post-onset of puberty.

When we stratify the results by pubertal stage, at age 11 we see increased heritability among males post-onset ($h^2 = 0.81$, $p = 0.156$) and females pre-onset ($h^2 = 0.39$, $p = 0.134$); a similar pattern is seen at age 13 (Table 2). However, the sample sizes in these stratified analyses are small, resulting in large standard errors and thus results should be interpreted with caution.

We investigated whether timing of puberty had an effect on h^2_{SNP} by adjusting the female estimates for age at

Table 2 Heritability estimates of child-reported SMFQ scores at the main ages of interest¹

| | | Age 11 | | | Age 13 | | | Age 18 | | |
|-----------------------|------|--------|---------------|-----------------|--------|-------------|-----------------|--------|---------------|-----------------|
| | | N | h^2 (se) | <i>P</i> -value | N | h^2 (se) | <i>P</i> -value | N | h^2 (se) | <i>P</i> -value |
| Overall sample | | 5480 | 0.07 (0.06) | 0.244 | 5055 | 0.17 (0.06) | 0.006 | 3289 | 0.03 (0.10) | 0.712 |
| Male | | 2706 | 0.04 (0.12) | 0.760 | 2462 | 0.30 (0.13) | 0.020 | 1414 | <0.001 (0.22) | 1.000 |
| Female | | 2774 | 0.07 (0.12) | 0.570 | 2593 | 0.03 (0.12) | 0.790 | 1875 | 0.18 (0.17) | 0.286 |
| Stratified by puberty | | | | | | | | | | |
| Male | Pre | 1123 | <0.001 (0.28) | 1.000 | 161 | 0.05 (1.96) | 0.980 | - | - | - |
| | Post | 525 | 0.81 (0.59) | 0.156 | 1240 | 0.43 (0.27) | 0.108 | - | - | - |
| Female | Pre | 1234 | 0.39 (0.26) | 0.134 | 73 | 1.00 (4.28) | 0.784 | - | - | - |
| | Post | 877 | 0.11 (0.37) | 0.758 | 1673 | 0.10 (0.19) | 0.592 | - | - | - |

¹ All analysis adjusted for age (in months), overall sample additionally adjusted for gender

both assessment and menarche. The pattern of estimates remained relatively consistent, with the majority of estimates becoming larger after controlling for age at menarche (Additional file 1: Table S1).

Sensitivity analysis

Complete case analysis

When we re-estimated overall h^2_{SNP} at each of our ages of interest using only participants with complete data (i.e. pubertal stage), the estimates for ages 11 and 13 became smaller (<0.1% and 4.1% respectively), while h^2_{SNP} at age 18 remained of a similar level (3.3%). However, the number of participants in the younger age groups was substantially reduced, those with data available at age 18 remained similar.

Transformed data

Given that the SMFQ data were somewhat skewed, and the skew appeared to increase with age (Additional file 1: Fig. S2), we applied a quantile normalisation transformation at each age. The pattern of heritability estimates

remained relatively constant. Of our 3 main ages of interest, we saw a slight increase in estimated heritability at age 11 and 18 (0.08 and 0.1 respectively), the peak seen at 13 remained ($h^2 = 0.15$) (Additional file 1: Table S2).

Genome-wide association studies

A genome-wide association study (GWAS) was performed for each of our ages of interest. At age 11 and age 18 we found no variants achieving genome-wide significance levels ($p \leq 5 \times 10^{-8}$). At age 13, however, we found evidence of an association between a well-imputed (information score = 0.88) variant on chromosome 7 (rs138191010 – risk allele: T, $\beta = 0.142$, $se = 0.03$, $p = 2.51 \times 10^{-8}$) and depressive symptoms (Fig. 2, Additional file 1: Fig. S3). Sex-stratified analyses found no robust associations, although the direction of effect with rs138191010 was consistent (Females: $\beta = 0.134$, $se = 0.04$, $p = 1.38 \times 10^{-4}$; Males: $\beta = 0.150$, $se = 0.04$, $p = 5.71 \times 10^{-5}$). There was also no strong evidence of an association between rs138191010 and depressive symptom scores at either age 11 or 18, however the

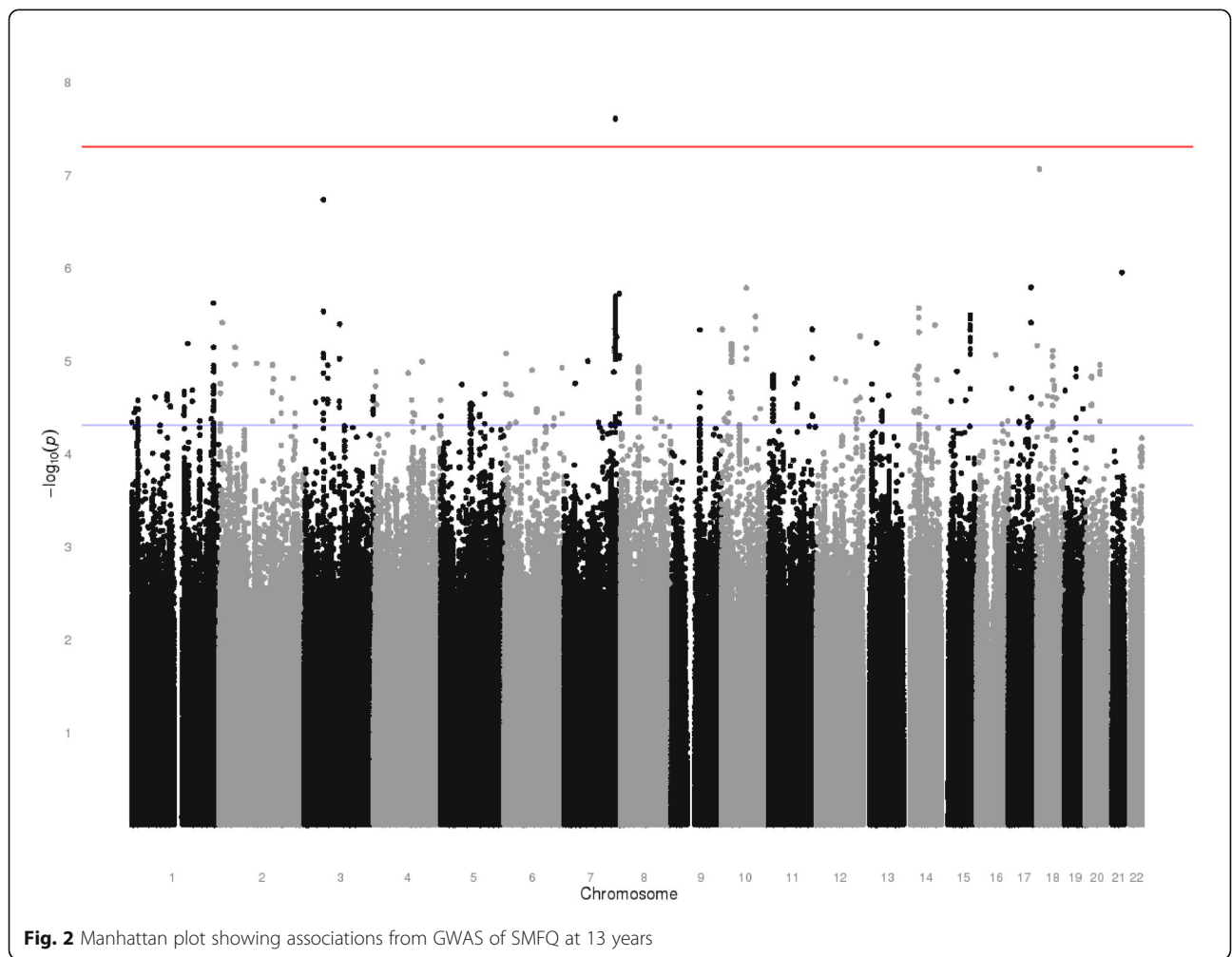


Fig. 2 Manhattan plot showing associations from GWAS of SMFQ at 13 years

direction of effect was consistent across all time points (Age 11: $\beta = 0.065$, $se = 0.03$, $p = 0.009$; Age 18: $\beta = 0.062$, $se = 0.03$, $p = 0.054$).

A sensitivity analysis using quantile normalised scores at age 13 found strong evidence of an association ($\beta = 0.135$, $se = 0.03$, $p = 6.7 \times 10^{-8}$).

A look up of this variant in both the TRAILS and TEDS cohorts failed to replicate the finding (Additional file 1: Fig. S4).

Discussion

This study aimed to build on work by Nivard et al. [12] by attempting to unpick the heritability of depression across adolescence and investigating the role of puberty. Unlike the Nivard study, which found that heritability decreased substantially at age 12, our estimates, although lower, appeared to peak close to this time at age 13 ($h^2_{\text{twin}}: 0.37$ vs $h^2_{\text{SNP}}: 0.17$). Although Nivard et al. [12] offered several explanations for this, including puberty, they noted that it coincided with a switch in questionnaires from parent to self-report, acknowledging that the decrease may be an artefact of the change in reporting method.

Nivard et al. [12] found increased heritability estimates when using parent-reported depressive symptoms, however, in ALSPAC these estimates were consistently lower than for self-reported symptoms. Regardless of rater, and in both raw and transformed data, we found a peak in heritability around age 13. With raters only overlapping at one time point, it seems likely that the drop in heritability seen in the Nivard paper is related to change in reporting method.

Within ALSPAC both parent and self-reported depressive symptoms are available, enabling us to remove this source of confounding from estimates, however, confounding according to timing of puberty remains. We investigated this by stratifying on pubertal status, enabling us to explore patterns of heritability according to age and pubertal status. However, our sample size was reduced somewhat when running these exploratory analyses and restricting to those with data on puberty, and no firm conclusions could be made.

We dichotomised pubertal stage into pre- and post-pubertal onset according to Tanner stage. At age 11 around 30% of males had reached puberty, compared to approximately 40% of females. At this age, heritability estimates were highest among males who had reached puberty ($h^2 = 0.81$, $p = 0.156$) and pre-pubertal females ($h^2 = 0.39$, $p = 0.134$). Given that males generally experience puberty later than females, it is possible that these differences in heritability are related to differences in timing of puberty and changes in environmental rather than genetic risk. One explanation would be that the social consequences of earlier puberty are opposite for

males and females, with earlier puberty being protective in boys reducing environmental risk and thereby increasing the relative contribution of genetic risk. While earlier puberty could increase environmental risk in females, hence reducing the relative contribution of genetic risk at this age.

When stratifying analyses on sex, regardless of pubertal status, heritability was increased for males at age 13 ($h^2 = 0.30$) and females at 18 ($h^2 = 0.18$). This increased male estimate appears to be driving the overall peak in heritability ($h^2 = 0.17$) at 13, although a sex-stratified GWAS found no SNPs achieving genome-wide significance.

We had good power when using the entire sample (power at age 11:84%; 13:78%; 18:42%) to detect a true heritability of 17%. Despite little statistical evidence for non-zero heritability at most ages, the confidence intervals estimated for age 11 exclude 21%, suggesting that our results demonstrate h^2_{SNP} at this age is lower than that previously reported for adult depression. Though this could be explained by phenotype definition, rather than biological differences per se, as we used self-reported measures of depressive symptoms rather than detailed diagnostic interviews. When performing stratified analyses, power will be diminished further, however, the pattern of results observed generate interesting hypotheses that could be followed up in larger datasets.

While Nivard et al. [12] found high heritability estimates among their younger age groups, estimates at age 11 in our study do not overlap with these. However, it is important to remember SNP-based and twin heritability are different. We would expect twin estimates to be higher simply due to the study design, which relies on closely related individuals. Some of this inflation in h^2 is real, due to shared rare genetic variants, whereas some is due to shared common environment, and therefore false inflation of the estimates. Our analyses are restricted to unrelated individuals in an attempt to prevent inflation of our h^2_{SNP} estimates due to shared environment. Additionally, our analyses incorporate only variants captured on the genotyping platform used, and is an estimate of the heritability we could potentially estimate through GWAS.

Although we expect to see higher estimates from Nivard et al. [12] in general, we can compare the patterns of heritability across time in the two studies. Nivard et al. [12] report a decline in heritability during childhood and adolescence, however the results shown in ALSPAC do not support this. Our results are relatively stable from age 11–18, with the exception of a peak at around age 13.

It is also important to consider selective drop out when thinking about these patterns of heritability. Those with increased depressive symptoms may be more likely to

drop out, leading to declines in heritability. However, no robust evidence of association between a genetic risk score for depression and dropout was found in our sample ($p = 0.67$).

A GWAS in ALSPAC found evidence of association between a variant on chromosome 7 (rs138191010) and depressive symptoms at age 13 (when we also see greatest heritability). However, this was not replicated in TRAILS (which found weak evidence of an association in the opposite direction) or TEDS (which found no robust evidence of an association). Both ALSPAC and TEDS used the SMFQ to assess depression, while the Youth Self Report was used in TRAILS. When restricting to just ALSPAC and TEDS, which used a consistent measure of depression, there remained no strong evidence of an association. It is therefore possible that this is a false positive.

Limitations

Although our analyses, in particular those stratifying on pubertal status, may lack power, the patterns observed provide interesting hypotheses surrounding the heritability of depression at different developmental stages, and provide pilot data that can be utilised to design well-powered studies to investigate these hypotheses.

Conclusion

We estimated heritability of depression at several points through late childhood and across adolescence and found an apparent peak in heritability at age 13, confidence intervals around the heritability estimates throughout these ages suggest an upper-bound to h^2_{SNP} of around 30%. Our results indicate that sex and pubertal onset are likely to affect heritability estimates. We also found differences between previous h^2_{SNP} estimates calculated in adults (0.21) and our lower estimates for depressive symptoms found at age 11 (0.07). A variant located on chromosome 7 was found to be associated with depressive symptoms at age 13 in ALSPAC, although this was not replicated in other European studies.

Additional file

Additional file 1: This file contains Additional materials and methods, Tables S1-S2 and Figs. S1-S3. (DOCX 0.99 mb)

Abbreviations

ALSPAC: Avon Longitudinal Study of Parents and Children; DHEA: Dehydroepiandrosterone; GCTA: Genome-wide Complex Trait Analysis; GRM: Genetic Relatedness Matrix; GWAS: Genome-Wide Association Study; h^2_{SNP} : SNP-heritability; MDD: Major Depressive Disorder; NTR: Netherlands Twins Registry; PGC: Psychiatric Genomics Consortium; REML: Restricted Maximum Likelihood; se: Standard Error; SMFQ: Short Moods and Feelings Questionnaire; TEDS: Twins Early Development Study; TRAILS: TRacking Adolescents Individual Lives Study

Acknowledgements

We are extremely grateful to all the families who took part in this study, the midwives for their help in recruiting them, and the whole ALSPAC team, which includes interviewers, computer and laboratory technicians, clerical workers, research scientists, volunteers, managers, receptionists and nurses. We gratefully acknowledge the ongoing contribution of the participants in the Twins Early Development Study (TEDS) and their families. This research is part of the TRacking Adolescents' Individual Lives Survey (TRAILS). Participating centers of TRAILS include various departments of the University Medical Center and University of Groningen, the Erasmus University Medical Center Rotterdam, the University of Utrecht, the Radboud Medical Center Nijmegen, and the Parnassia Bavo group, all in the Netherlands. We are grateful to everyone who participated in this research or worked on this project to and make it possible.

Availability of data and material

A fully searchable data dictionary with information on all available measures in ALSPAC is available at <http://www.bris.ac.uk/alspac/researchers/data-access/data-dictionary/>. Data are available upon application to the ALSPAC executive committee (alspac-exec@bristol.ac.uk). The ALSPAC data management plan (available here: <http://www.bristol.ac.uk/alspac/researchers/access/>) describes in detail the policy regarding data sharing, which is through a system of managed open access.

Funding

HS was funded by a Wellcome Trust 4-year PhD studentship in molecular, genetic and lifecourse epidemiology (WT099871MA). LP was funded by an MRC Population Health Scientist Fellowship (MR/J012165/1). HS, LP and GDS work in the Medical Research Council Integrative Epidemiology Unit at the University of Bristol which is supported by the Medical Research Council and the University of Bristol (MC_UU_12013/1). The UK Medical Research Council and the Wellcome Trust (Grant ref: 102,215/2/13/2) and the University of Bristol provide core support for ALSPAC. GWAS data was generated by Sample Logistics and Genotyping Facilities at the Wellcome Trust Sanger Institute and LabCorp (Laboratory Corporation of America) using support from 23andMe. TEDS is supported by a program grant to Robert Plomin from the UK Medical Research Council (G0901245; and previously G0500079), with additional support from the US National Institutes of Health (HD044454; HD059215). Eva Krapohl is supported by an Institute of Psychiatry Excellence/ Medical Research Council postgraduate Studentship. TRAILS has been financially supported by various grants from the Netherlands Organization for Scientific Research (NWO), ZonMW, GB-MaGW, the Dutch Ministry of Justice, the European Science Foundation, BBMRI-NL, and the participating universities. The funders had no role in study design, data collection and analysis, decision to publish or preparation of the manuscript.

Authors' contributions

HS, JE and LP designed the study. HS analysed the data, drafted and revised the paper. EK and RW conducted analysis. EK, RW, AO, GDS, LP and JE revised the draft paper. All authors have approved the manuscript and agree with its submission to the Journal of Affective Disorders.

Ethics approval and consent to participate

Ethical approval for the study was obtained from the ALSPAC Ethics and Law Committee and the Local Research Ethics Committees. Informed written consent was provided by parents of participants after receiving a complete description of the study at the time of enrolment. Parents could withdraw their child at any time.

Consent for publication

Not applicable.

Competing interests

The authors declare that they have no competing interests.

Publisher's Note

Springer Nature remains neutral with regard to jurisdictional claims in published maps and institutional affiliations.

Author details

¹MRC Integrative Epidemiology Unit, Population Health Sciences, Bristol Medical School, University of Bristol, Barley House, Oakfield Grove, Bristol BS8 2BN, UK. ²Centre for Academic Mental Health, Population Health Sciences, Bristol Medical School, University of Bristol, Bristol, UK. ³School of Experimental Psychology, University of Bristol, Bristol, UK. ⁴MRC Social, Genetic and Developmental Psychiatry Centre, Institute of Psychiatry, Psychology and Neuroscience, King's College London, London, UK. ⁵Interdisciplinary Center Psychopathology and Emotion Regulation, University of Groningen, University Medical Center Groningen, Groningen, The Netherlands.

Received: 31 May 2017 Accepted: 23 August 2017

Published online: 31 August 2017

References

- Schizophrenia Working Group of the Psychiatric Genomics C. Biological insights from 108 schizophrenia-associated genetic loci. *Nature*. 2014; 511:421–7.
- Major Depressive Disorder Working Group of the Psychiatric GC, Ripke S, Wray NR, Lewis CM, Hamilton SP, Weissman MM, et al. A mega-analysis of genome-wide association studies for major depressive disorder. *Mol Psychiatry*. 2013;18:497–511.
- Hyde CL, Nagle MW, Tian C, Chen X, Paciga SA, Wendland JR, et al. Identification of 15 genetic loci associated with risk of major depression in individuals of European descent. *Nature Research: Nat. Genet*; 2016.
- Okbay A, Baselmans BML, De Neve J-E, Turley P, Nivard MG, Fontana MA, et al. Genetic variants associated with subjective well-being, depressive symptoms, and neuroticism identified through genome-wide analyses. *Nat. Genet*; 2016.
- Cai N, Bigdeli TB, Kretschmar W, Li Y, Liang J, Song L, et al. Sparse whole-genome sequencing identifies two loci for major depressive disorder. *Nature*. Nature Publishing Group, a division of Macmillan Publishers Limited. All Rights Reserved.; 2015;523:588–91.
- Ferentinos P, Koukounari A, Power R, Rivera M, Uher R, Craddock N, et al. Familiarity and SNP heritability of age at onset and episodicity in major depressive disorder. *Psychol Med Cambridge University Press*. 2015;45:1–11.
- Power RA, Keers R, Ng MY, Butler AW, Uher R, Cohen-Woods S, et al. Dissecting the genetic heterogeneity of depression through age at onset. *Am J Med Genet B Neuropsychiatr Genet*. 2012;159B:859–68.
- Shi J, Potash JB, Knowles JA, Weissman MM, Coryell W, Scheftner WA, et al. Genome-wide association study of recurrent early-onset major depressive disorder. *Mol Psychiatry*. 2011;16:193–201.
- Sullivan PF, Neale MC, Kendler KS. Genetic epidemiology of major depression: review and meta-analysis. *Am J Psychiatry American Psychiatric Publishing*. 2000;157:1552–62.
- Yang J, Lee SH, Goddard ME, Visscher PM. GCTA: a tool for genome-wide complex trait analysis. *Am J Hum Genet*. 2011;88:76–82.
- Cross-Disorder Group of the Psychiatric Genomics Consortium, Lee SH, Ripke S, Neale BM, Faraone S V, Purcell SM, et al. Genetic relationship between five psychiatric disorders estimated from genome-wide SNPs. *Nat Genet*. 2013;45:984–94.
- Nivard MG, Dolan CV, Kendler KS, Kan KJ, Willemsen G, van Beijsterveldt CE, et al. Stability in symptoms of anxiety and depression as a function of genotype and environment: a longitudinal twin study from ages 3 to 63 years. *Psychol Med*. 2015;45:1039–49.
- Thapar A, Rice F. Twin studies in pediatric depression. *Child Adolesc Psychiatr Clin N Am*. 2006;15:869–81. viii
- Scourfield J, Rice F, Thapar A, Harold GT, Martin N, McGuffin P. Depressive symptoms in children and adolescents: changing aetiological influences with development. *J Child Psychol Psychiatry*. 2003;44:968–76.
- Rice F, Harold GT, Thapar A. Assessing the effects of age, sex and shared environment on the genetic aetiology of depression in childhood and adolescence. *J Child Psychol Psychiatry*. 2002;43:1039–51.
- Rice F. Genetics of childhood and adolescent depression: insights into etiological heterogeneity and challenges for future genomic research. *Genome Med*. 2010;2:68.
- Silberg J, Pickles A, Rutter M, Hewitt J, Simonoff E, Maes H, et al. The influence of genetic factors and life stress on depression among adolescent girls. *Arch Gen Psychiatry*. 1999;56:225–32.
- Thapar A, Collishaw S, Pine DS, Thapar AK. Depression in adolescence. *Lancet*. 2012;379:1056–67.
- Angold A, Costello EJ, Worthman CM. Puberty and depression: the roles of age, pubertal status and pubertal timing. *Psychol Med*. 1998;28:51–61.
- Joinson C, Heron J, Lewis G, Croudace T, Araya R. Timing of menarche and depressive symptoms in adolescent girls from a UK cohort. *Br J Psychiatry*. 2011;198:17–23. NaN-2.
- Rudolph KD, Troop-Gordon W, Lambert SF, Natsuaki MN. Long-term consequences of pubertal timing for youth depression: identifying personal and contextual pathways of risk. *Dev Psychopathol*. 2014;26:1423–44.
- Whittle S, Yücel M, Lorenzetti V, Byrne ML, Simmons JG, Wood SJ, et al. Pituitary volume mediates the relationship between pubertal timing and depressive symptoms during adolescence. *Psychoneuroendocrinology*. 2012;37:881–91.
- Goodyer IM, Herbert J, Altham PM. Adrenal steroid secretion and major depression in 8- to 16-year-olds, III. Influence of cortisol/DHEA ratio at presentation on subsequent rates of disappointing life events and persistent major depression. *Psychol. Med*. 1998;28:265–73.
- Mendle J, Turkheimer E, Emery RE. Detrimental psychological outcomes associated with early pubertal timing in adolescent girls. *Dev Rev*. 2007;27:151–71.
- Fraser A, Macdonald-Wallis C, Tilling K, Boyd A, Golding J, Davey Smith G, et al. Cohort profile: the Avon longitudinal study of parents and children: ALSPAC mothers cohort. *Int J Epidemiol*. 2013;42:97–110.
- Boyd A, Golding J, Macleod J, Lawlor DA, Fraser A, Henderson J, et al. Cohort profile: the “children of the 90s”—the index offspring of the Avon longitudinal study of parents and children. *Int J Epidemiol*. 2013;42:111–27.
- Angold A, Costello EJ, Messer SC, Pickles A. Development of a short questionnaire for use in epidemiological studies of depression in children and adolescents. *Int J Methods Psychiatr Res US: John Wiley & Sons*. 1995;5:237–49.
- Marshall WA, Tanner JM. Variations in pattern of pubertal changes in girls. *Arch Dis Child*. 1969;44:291–303.
- Marshall WA, Tanner JM. Variations in the pattern of pubertal changes in boys. *Arch Dis Child*. 1970;45:13–23.
- Visscher PM, Hemani G, Vinkhuyzen AA, Chen GB, Lee SH, Wray NR, et al. Statistical power to detect genetic (co)variance of complex traits using SNP data in unrelated samples. *PLoS Genet*. 2014;10:e1004269.
- Marchini J, Howie B, Myers S, McVean G, Donnelly P. A new multipoint method for genome-wide association studies by imputation of genotypes. *Nat Genet Nature Publishing Group*. 2007;39:906–13.
- Huisman M, Oldehinkel AJ, de Winter A, Minderaa RB, de Bildt A, Huizink AC, et al. Cohort profile: the Dutch “Tracking adolescents” individual lives’ survey’. *TRAILS Int J Epidemiol*. 2008;37:1227–35.
- Oldehinkel AJ, Rosmalen JG, Buitelaar JK, Hoek HW, Ormel J, Raven D, et al. Cohort Profile Update: the TRacking Adolescents’ Individual Lives Survey (TRAILS). *Int. J. Epidemiol*. 2015;44:76–76n.
- Haworth CMA, Davis OSP, Plomin R. Twins early development study (TEDS): a genetically sensitive investigation of cognitive and behavioral development from childhood to young adulthood. *Twin res. Hum. Genet. Cambridge University Press*. 2013;16:117–25.

Submit your next manuscript to BioMed Central and we will help you at every step:

- We accept pre-submission inquiries
- Our selector tool helps you to find the most relevant journal
- We provide round the clock customer support
- Convenient online submission
- Thorough peer review
- Inclusion in PubMed and all major indexing services
- Maximum visibility for your research

Submit your manuscript at
www.biomedcentral.com/submit

