



Ingram, J., Jenkins-Jones, S., Knipe, D., Morgan, C., Cannings-John, R., & Piguet, V. (2018). Population-based Clinical Practice Research Datalink study using algorithm modelling to identify the true burden of hidradenitis suppurativa. *British Journal of Dermatology*, 178(4), 917-924. <https://doi.org/10.1111/bjd.16101>

Publisher's PDF, also known as Version of record

License (if available):  
CC BY-NC-ND

Link to published version (if available):  
[10.1111/bjd.16101](https://doi.org/10.1111/bjd.16101)

[Link to publication record in Explore Bristol Research](#)  
PDF-document

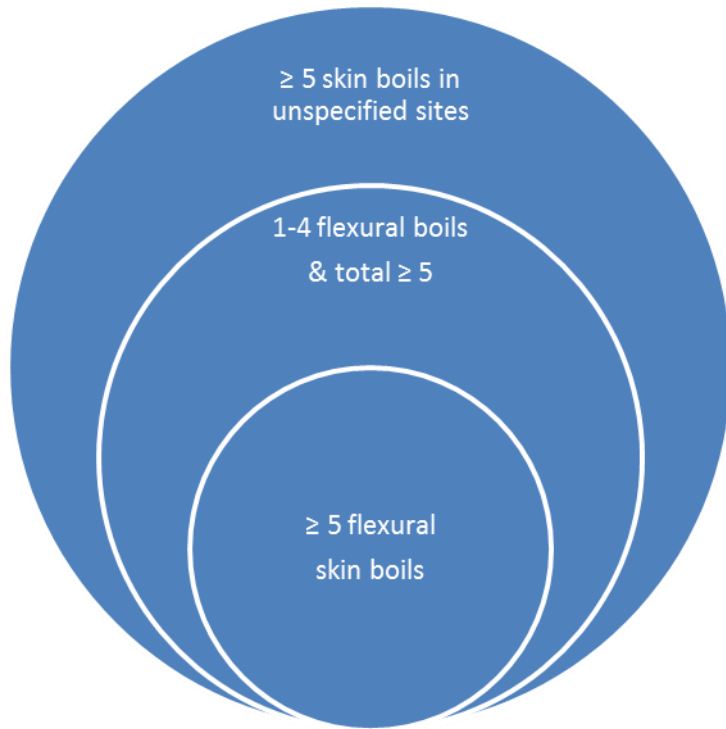
This is the final published version of the article (version of record). It first appeared online via Wiley at <https://onlinelibrary.wiley.com/doi/abs/10.1111/bjd.16101> . Please refer to any applicable terms of use of the publisher.

## University of Bristol - Explore Bristol Research

### General rights

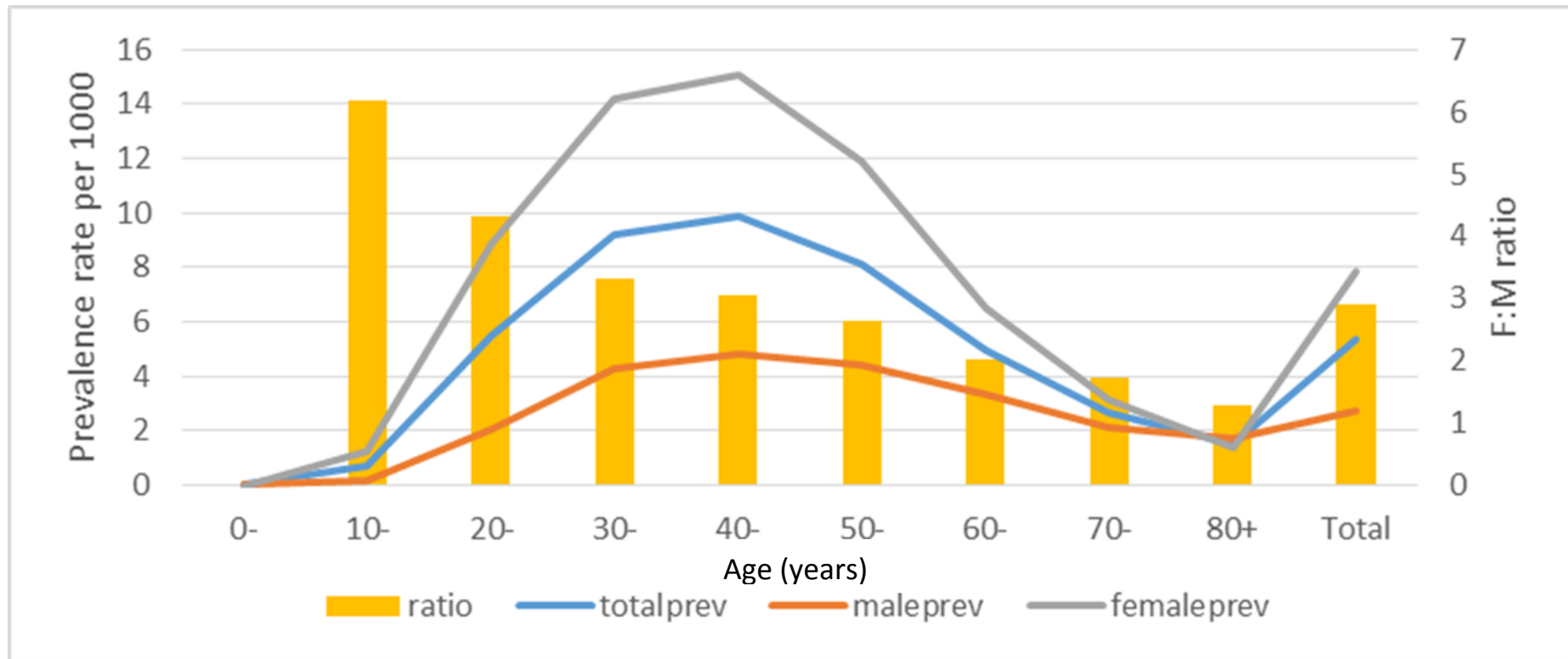
This document is made available in accordance with publisher policies. Please cite only the published version using the reference above. Full terms of use are available: <http://www.bristol.ac.uk/red/research-policy/pure/user-guides/ebr-terms/>

**Figure 1:** Algorithm hierarchy used to capture unrecognised cases of hidradenitis suppurativa



Legend: Schematic representation of sub-algorithms used to detect unrecognised hidradenitis suppurativa with differing degrees of stringency.

**Figure 2:** Demographics of physician-diagnosed hidradenitis suppurativa cases.



Legend: Line graph of the prevalence rate of physician-diagnosed hidradenitis suppurativa in UK males, females and in total, subdivided by decade of age. Superimposed is a histogram of the female: male ratio for each decade of age.