



Kunutsor, S. K., Kurl, S., Khan, H., Zaccardi, F., & Laukkanen, J. A. (2017). Associations of cardiovascular and all-cause mortality events with oxygen uptake at ventilatory threshold. *International Journal of Cardiology*, 236, 444-450. <https://doi.org/10.1016/j.ijcard.2017.01.156>

Peer reviewed version

License (if available):  
CC BY-NC-ND

Link to published version (if available):  
[10.1016/j.ijcard.2017.01.156](https://doi.org/10.1016/j.ijcard.2017.01.156)

[Link to publication record on the Bristol Research Portal](#)  
PDF-document

## University of Bristol – Bristol Research Portal

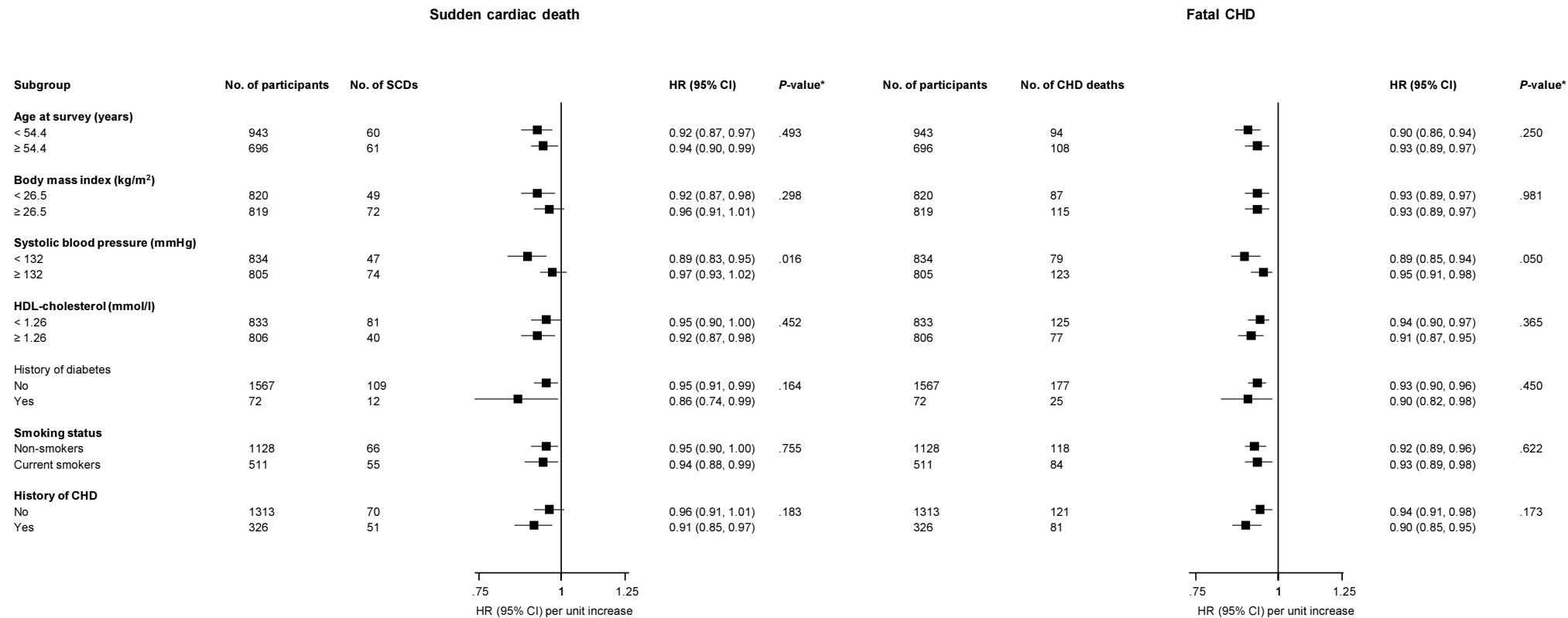
### General rights

This document is made available in accordance with publisher policies. Please cite only the published version using the reference above. Full terms of use are available:  
<http://www.bristol.ac.uk/red/research-policy/pure/user-guides/brp-terms/>

## APPENDIX SUPPLEMENTS

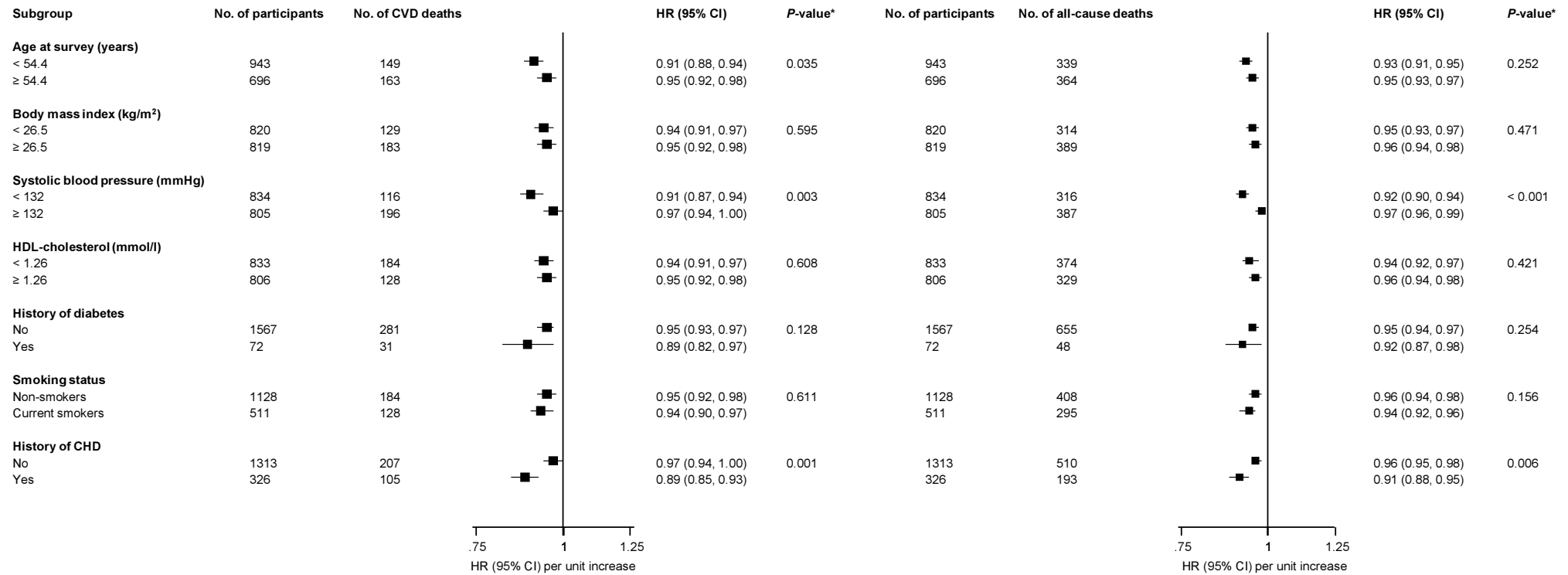
<b>Appendix Supplement 1</b>	Hazard ratios for sudden cardiac death and fatal coronary heart disease by several participant level characteristics
<b>Appendix Supplement 2</b>	Hazard ratios for fatal cardiovascular disease and all-cause mortality by several participant level characteristics
<b>Appendix Supplement 3</b>	Associations of peak VO <sub>2</sub> with sudden cardiac death, fatal coronary heart disease, fatal cardiovascular disease, and all-cause mortality

## Appendix Supplement 1: Hazard ratios for sudden cardiac death and fatal coronary heart disease by several participant level characteristics



Hazard ratios were adjusted for age, body mass index, systolic blood pressure, high-density lipoprotein cholesterol, smoking status, alcohol consumption, prevalent coronary heart disease, history of diabetes mellitus, resting heart rate, physical activity, and socioeconomic status; CHD, coronary heart disease; CI, confidence interval; HDL, high-density lipoprotein; HR, hazard ratio; SCD, sudden cardiac death; \*, *P*-value for interaction

## Appendix Supplement 2: Hazard ratios for fatal cardiovascular disease and all-cause mortality by several participant level characteristics



Hazard ratios were adjusted for age, body mass index, systolic blood pressure, high-density lipoprotein cholesterol, smoking status, alcohol consumption, prevalent coronary heart disease, history of diabetes mellitus, resting heart rate, physical activity, and socioeconomic status; CHD, coronary heart disease; CI, confidence interval; HDL, high-density lipoprotein; HR, hazard ratio; SCD, sudden cardiac death; \*, *P*-value for interaction

**Appendix Supplement 3.** Associations of peak VO<sub>2</sub> with sudden cardiac death, fatal coronary heart disease, fatal cardiovascular disease, and all-cause mortality

Models Peak oxygen uptake	Sudden cardiac death		Fatal coronary heart disease		Fatal cardiovascular disease		All-cause mortality	
	121 cases		202 cases		312 cases		703 cases	
	Hazard ratio (95% CI)	<i>P</i> -value	Hazard ratio (95% CI)	<i>P</i> -value	Hazard ratio (95% CI)	<i>P</i> -value	Hazard ratio (95% CI)	<i>P</i> -value
<b>Age-adjusted</b>								
Per unit (ml/kg/min)	0.90 (0.87-0.93)	< 0.001	0.89 (0.87-0.91)	< 0.001	0.91 (0.90-0.93)	< 0.001	0.94 (0.93-0.95)	< 0.001
Per 1 MET	0.69 (0.62-0.77)	< 0.001	0.67 (0.62-0.73)	< 0.001	0.73 (0.68-0.77)	< 0.001	0.81 (0.77-0.84)	< 0.001
Quartile 1 (10.25-26.42)	1 [Reference]		1 [Reference]		1 [Reference]		1 [Reference]	
Quartile 2 (26.43-30.97)	0.62 (0.41-0.94)	0.024	0.57 (0.41-0.79)	0.001	0.62 (0.47-0.81)	< 0.001	0.65 (0.54-0.79)	< 0.001
Quartile 3 (30.98-35.79)	0.26 (0.15-0.45)	< 0.001	0.26 (0.17-0.40)	< 0.001	0.29 (0.21-0.41)	< 0.001	0.50 (0.41-0.61)	< 0.001
Quartile 4 (35.84-65.40)	0.16 (0.08-0.31)	< 0.001	0.15 (0.09-0.26)	< 0.001	0.24 (0.17-0.36)	< 0.001	0.33 (0.26-0.42)	< 0.001
<b>Multivariate-adjusted*</b>								
Per unit (ml/kg/min)	0.94 (0.90-0.97)	< 0.001	0.92 (0.89-0.94)	< 0.001	0.94 (0.92-0.96)	< 0.001	0.95 (0.94-0.96)	< 0.001
Per 1 MET	0.79 (0.70-0.89)	< 0.001	0.74 (0.68-0.82)	< 0.001	0.79 (0.73-0.85)	< 0.001	0.84 (0.80-0.88)	< 0.001
Quartile 1 (10.25-26.42)	1 [Reference]		1 [Reference]		1 [Reference]		1 [Reference]	
Quartile 2 (26.43-30.97)	0.80 (0.52-1.24)	0.326	0.72 (0.51-1.01)	0.056	0.75 (0.57-0.99)	0.045	0.73 (0.60-0.89)	0.002
Quartile 3 (30.98-35.79)	0.38 (0.21-0.69)	0.001	0.37 (0.23-0.57)	< 0.001	0.39 (0.27-0.56)	< 0.001	0.57 (0.46-0.71)	< 0.001
Quartile 4 (35.84-65.40)	0.31 (0.15-0.66)	0.002	0.26 (0.14-0.46)	< 0.001	0.40 (0.27-0.62)	< 0.001	0.43 (0.33-0.57)	< 0.001
<b>Multivariate-adjusted* plus VO<sub>2</sub> at AT</b>								
Per unit (ml/kg/min)	0.91 (0.86-0.97)	0.006	0.89 (0.85-0.94)	< 0.001	0.91 (0.87-0.94)	< 0.001	0.95 (0.93-0.98)	< 0.001
Per 1 MET	0.73 (0.58-0.91)	0.006	0.67 (0.56-0.80)	< 0.001	0.71 (0.62-0.82)	< 0.001	0.84 (0.76-0.92)	< 0.001
Quartile 1 (10.25-26.42)	1 [Reference]		1 [Reference]		1 [Reference]		1 [Reference]	
Quartile 2 (26.43-30.97)	0.80 (0.48-1.31)	0.372	0.76 (0.52-1.13)	0.180	0.79 (0.57-1.08)	0.139	0.80 (0.64-0.99)	0.041
Quartile 3 (30.98-35.79)	0.38 (0.18-0.78)	0.009	0.41 (0.23-0.72)	0.002	0.42 (0.27-0.66)	< 0.001	0.67 (0.50-0.88)	0.005
Quartile 4 (35.84-65.40)	0.30 (0.10-0.91)	0.033	0.32 (0.13-0.74)	0.008	0.47 (0.25-0.89)	0.020	0.57 (0.37-0.86)	0.008

\*, Hazard ratios are adjusted for age, body mass index, systolic blood pressure, high-density lipoprotein cholesterol, smoking status, alcohol consumption, prevalent coronary heart disease, history of diabetes mellitus, resting heart rate, physical activity, and socioeconomic status

VO<sub>2</sub> at VT, oxygen uptake at ventilatory threshold

1 MET is equivalent to 3.5 ml/kg/min of oxygen uptake