



King, S., Miani, C., Exley, J., Larkin, J., Kirtley, A., & Payne, R. (2018). The impact of issuing longer versus shorter duration prescriptions: a systematic review. *British Journal of General Practice*, 68(669), e286-e292. <https://doi.org/10.3399/bjgp18X695501>

Peer reviewed version

Link to published version (if available):  
[10.3399/bjgp18X695501](https://doi.org/10.3399/bjgp18X695501)

[Link to publication record in Explore Bristol Research](#)  
PDF-document

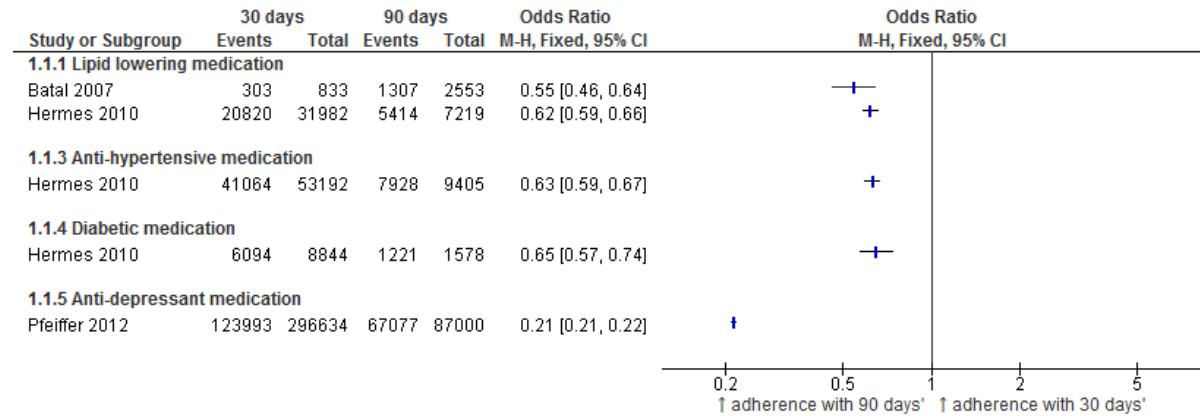
## University of Bristol - Explore Bristol Research

### General rights

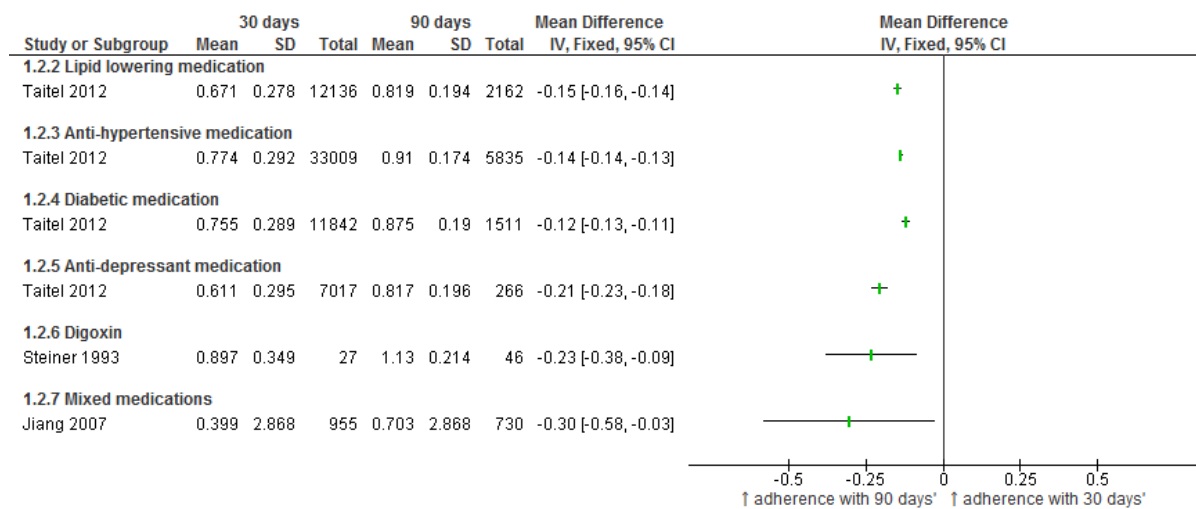
This document is made available in accordance with publisher policies. Please cite only the published version using the reference above. Full terms of use are available:  
<http://www.bristol.ac.uk/red/research-policy/pure/user-guides/ebr-terms/>

## Figure 1 Medication adherence

### A. Proportion of patients with $\geq 80\%$ medication adherence

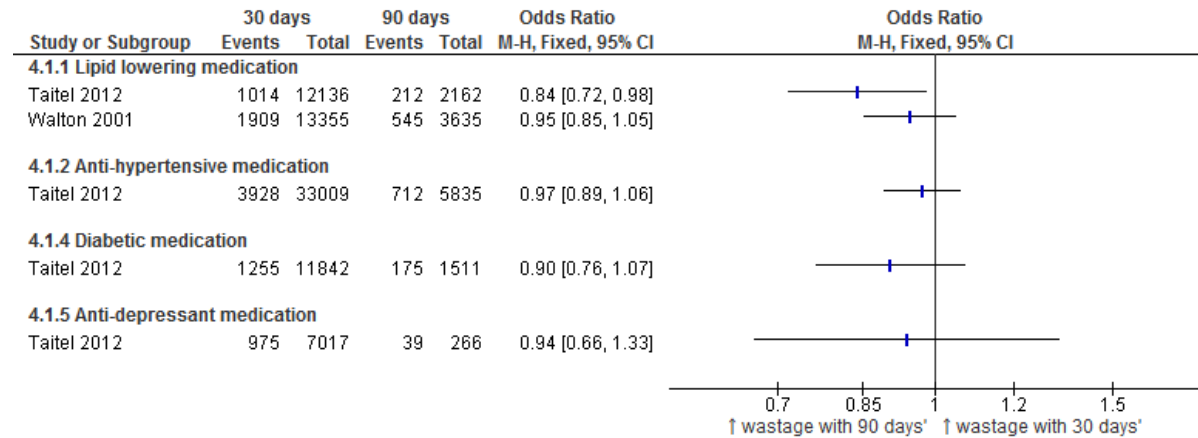


### B. Mean medication adherence

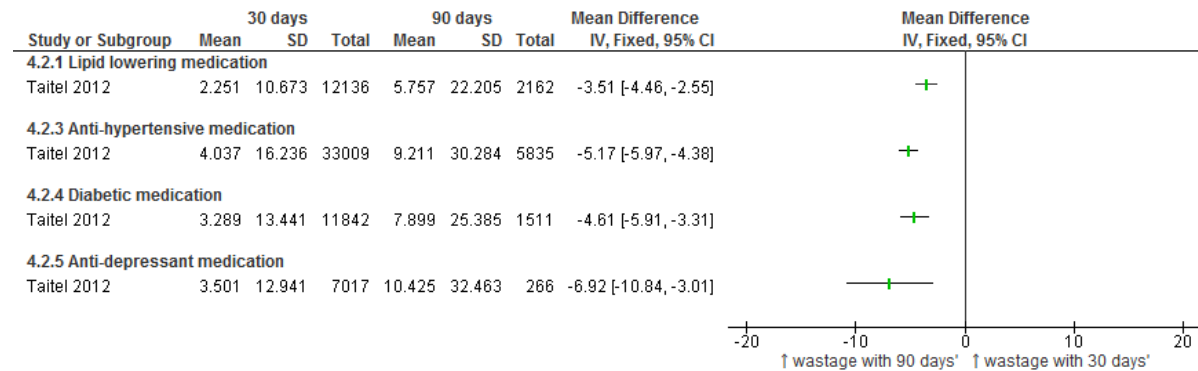


## Figure 2 Wasted medication

### A. Percentage of patients with wasted medication



### B. Mean days with wasted medication over the study period



### C. Mean days with wasted medication per 30 days (rate data)

