



Hudson, B., Round, J., Georgeson, B., Pring, A., Forbes, K., McCune, C. A., & Verne, J. (2018). Cirrhosis with ascites in the last year of life: a nationwide analysis of factors shaping costs, health-care use, and place of death in England. *Lancet Gastroenterology and Hepatology*, 3(2), 95-103. [https://doi.org/10.1016/S2468-1253\(17\)30362-X](https://doi.org/10.1016/S2468-1253(17)30362-X)

Peer reviewed version

Link to published version (if available):
[10.1016/S2468-1253\(17\)30362-X](https://doi.org/10.1016/S2468-1253(17)30362-X)

[Link to publication record in Explore Bristol Research](#)
PDF-document

University of Bristol - Explore Bristol Research

General rights

This document is made available in accordance with publisher policies. Please cite only the published version using the reference above. Full terms of use are available:
<http://www.bristol.ac.uk/red/research-policy/pure/user-guides/ebr-terms/>

Figure 1 – Adjusted probability of having any early unplanned readmission within the last year of life by care group and large volume paracentesis requirement (95 % confidence intervals)

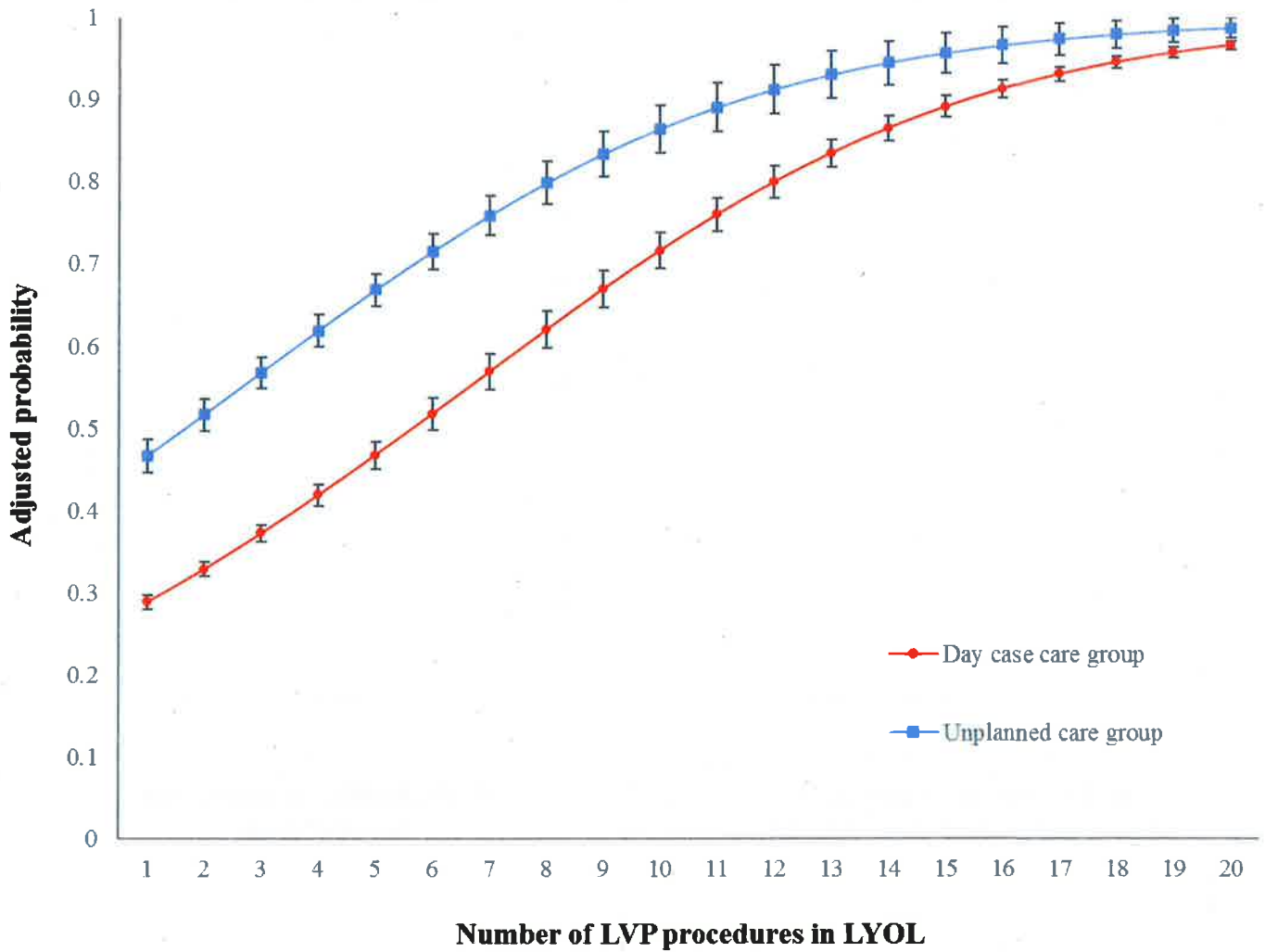
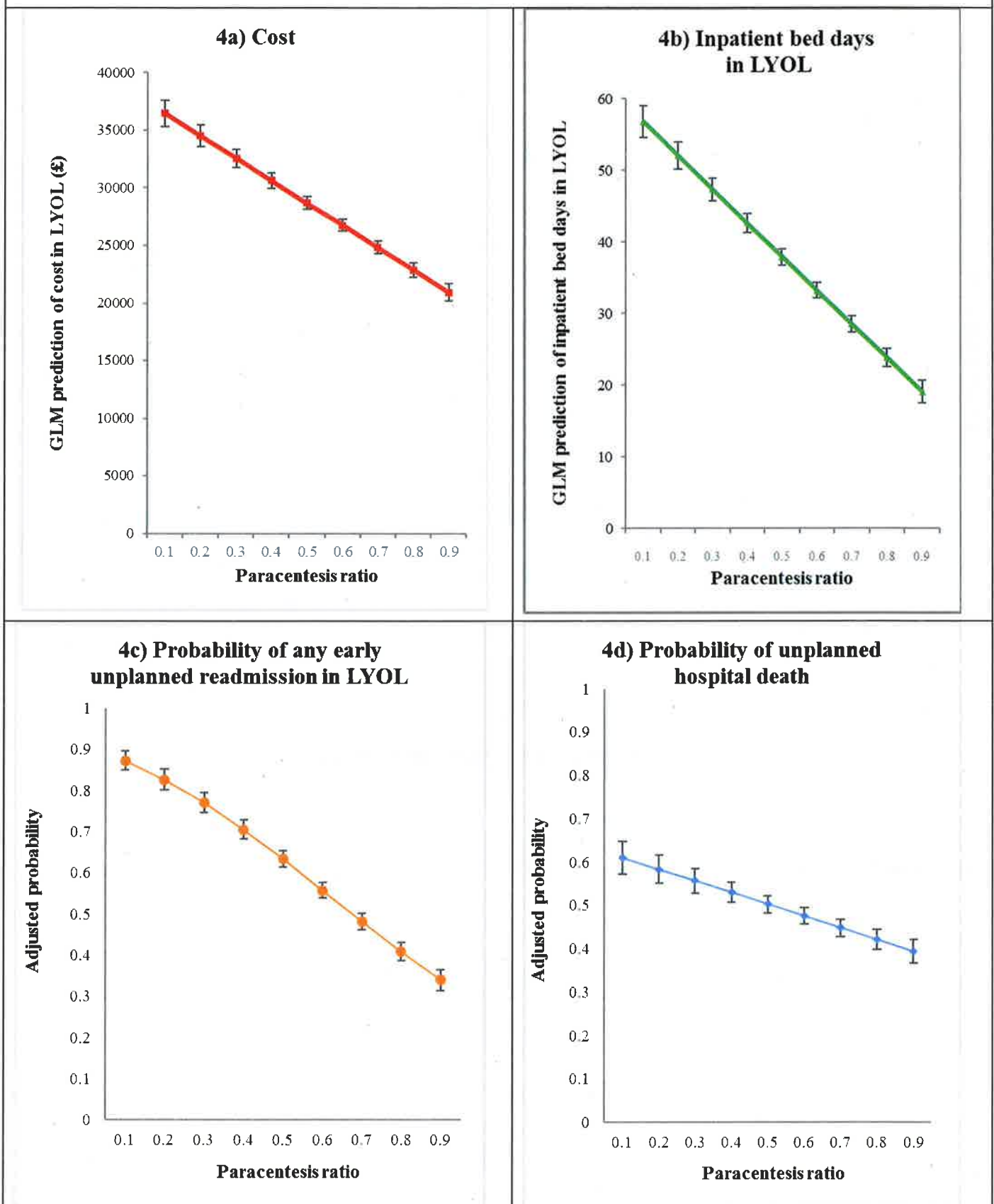


Figure legend; LVP: Large volume paracentesis, LYOL: Last year of life

Figure 2 – Relationship between the proportion of total LVP procedures in the LYOL performed in a day-case setting (paracentesis ratio) and outcomes among patients enrolled in a day-case LVP service (95% CIs)⁺



⁺ Following adjustment for all independent variables in generalised linear (graphs 2a, 2b) and logistic (graphs 2c, 2d) regression models

TABLE 1 – BASELINE DEMOGRAPHICS AND UNADJUSTED COMPARISON BETWEEN CARE GROUPS

Care group		Day-case care	Unplanned care	Overall	p-value ⁺
n (%)		2,625 (19.0)	11,193 (81.0)	13,818 (100)	
Sex n (%)	Male	1788 (68.1)	7337 (65.6)	9125 (66.1)	0.013
Ethnicity n (%)	White British	2,225 (84.8)	9,287 (83.0)	11,512 (83.3)	0.026
Mean age at death (SD)		63.9 (11.9)	61.4 (13.2)	61.9 (13.0)	<0.0001
Deprivation quintile n (%)	Most deprived	650 (24.8)	3,409 (30.5)	4,059 (29.4)	<0.0001
	Least deprived	384 (14.6)	1,485 (13.3)	1,869 (13.5)	0.066
Year of death n (%)	2013	812 (31.0)	3,652 (32.6)	4,464 (32.3)	
	2014	831 (31.7)	3,759 (33.6)	4,590 (33.2)	0.004
	2015	982 (37.4)	3,782 (33.8)	4,764 (34.5)	
Cause of death n (%)	ArLD	848 (32.3)	5,528 (49.4)	6,376 (46.1)	
	Viral liver disease	89 (3.4)	321 (2.9)	410 (2.97)	
	NASH	318 (12.1)	1,063 (9.5)	1,381 (10.0)	<0.0001
	HCC	721 (27.5)	1,622 (14.5)	2,343 (17.0)	
	Other	649 (24.7)	2,659 (23.8)	3,308 (23.9)	
Place of death n (%)	Care home	148 (5.6)	493 (4.4)	641 (4.6)	
	Hospice	269 (10.3)	508 (4.5)	777 (5.6)	
	Hospital	1,494 (56.9)	8,847 (79.0)	10,341 (74.8)	<0.0001
	Home	670 (25.5)	1,249 (11.2)	1,919 (13.9)	
	Other	44 (1.7)	96 (0.9)	140 (1.0)	
Mean time to death (days between index presentation and death in LYOL) (SD)		250 (103)	171 (124)	186 (124)	<0.0001
Mean total emergency admissions in LYOL (SD)		4.1 (3.4)	3.1 (2.6)	3.3 (2.8)	<0.0001
Mean total non-emergency admissions in LYOL (elective, day-case or other) (SD)		6.2 (10.7)	1.1 (4.8)	2.1 (6.7)	<0.0001
Patients with only one hospital admission in LYOL n (%)		52 (2.0)	2,404 (21.5)	2,456 (17.8)	<0.0001
Mean total LVP in LYOL (SD)		6.3 (6.2)	1.9 (1.6)	2.7 (3.5)	<0.0001
Mean non-LVP episodes in LYOL (SD)		8.4 (12.0)	6.1 (7.4)	6.5 (8.5)	<0.0001
Number of unplanned hospital deaths n (%)		1,249 (47.6)	8,796 (78.6)	10,045 (72.7)	<0.0001
Early unplanned readmissions/total readmissions ⁺⁺ (%)		4,618/8,928 (51.7)	13,270/25,140 (52.8)	17,888/34,068 (52.5)	0.085
Mean total inpatient bed days in LYOL (SD)		32.8 (34.7)	35.8 (33.1)	35.2 (33.4)	<0.0001
Mean bed occupancy ⁺⁺⁺ (SD)		13.8 (13.6)	37.8 (34.5)	33.2 (33.0)	<0.0001
Mean total cost (£) in LYOL (SD)		26,584 (20,908)	19,835 (15,515)	21,113 (16,881)	<0.0001
Mean cost (£) per month of care received in LYOL (SD) ⁺⁺⁺⁺		3654 (3,424)	8669 (15,338)	7,718 (14,024)	<0.0001

+ p value for difference between day-case and unplanned care groups

++number of emergency admissions in LYOL which occurred within 30 days of discharge (index admission and planned admissions excluded)

+++ % of days between index presentation in LYOL and death as hospital inpatient

++++ (Total cost in last year of life/days between index presentation in LYOL and death) x 30 – i.e. cost per month of care received in LYOL

ArLD: Alcohol related liver disease, HCC: Hepatocellular carcinoma, LYOL: Last year of life, NASH: Non-alcoholic steatohepatitis

TABLE 2 –IMPACT OF INDEPENDENT VARIABLES ON COST AND INPATIENT BED DAYS IN LAST YEAR OF LIFE⁺

		Cost in LYOL ⁺		Inpatient bed days in LYOL ⁺	
		£ (95% CI)	p-value	Days (95% CI)	p-value
Gender	Female		Reference group		
	Male	435 [24, 845]	0.038	-1.04 [-2.07, -0.02]	0.046
Ethnicity	White British		Reference group		
	Non-white British	441 [-82, 964]	0.098	1.97 [0.77, 3.18]	0.003
Age at death (per decade)		-166 [-334, 3]	0.054	0.64 [0.22, 1.06]	0.003
Deprivation quintile (1=most deprived)	1		Reference group		
	2	-363 [-910, 185]	0.194	-0.06 [-1.43, 1.31]	0.931
	3	-704 [-1278, -130]	0.016	-0.01 [-1.44, 1.43]	0.992
	4	-704 [-1313, -97]	0.023	-1.58 [-3.10, -0.06]	0.041
	5	-924 [-1568, -279]	0.005	0.22 [-1.39, 1.83]	0.789
Year of death	2013		Reference group		
	2014	1762 [1284, 2239]	<0.0001	-0.07 [-1.27, 1.12]	0.905
	2015	3163 [2689, 3636]	<0.0001	-0.78 [-1.96, 0.40]	0.195
Enrolled in day-case service?	No (unplanned care)		Reference group		
	Yes (planned care)	-4240 [-4829, -3651]	<0.0001	-16.98 [-18.45, -15.51]	<0.0001
Cause of death	ArLD		Reference group		
	Viral	455 [-710, 1620]	0.444	2.26 [-0.65, 5.16]	0.128
	NASH	194 [-509, 897]	0.589	1.43 [-0.32, 3.19]	0.109
	HCC	-4505 [-5137, -3872]	<0.0001	-10.30 [-11.88, -8.72]	<0.0001
	Other	-1237 [-1762, -712]	<0.0001	-2.43 [-3.74, -1.12]	<0.0001
Place of death	Hospital		Reference group		
	Care home	1990 [1044, 2935]	<0.0001	18.37 [16.01, 20.73]	<0.0001
	Home	-2275 [-2871, -1678]	<0.0001	-3.87 [-5.35, -2.38]	<0.0001
	Hospice	-1250 [-2143, -357]	0.006	0.16 [-2.07, 2.39]	0.886
	Other Places	-1395 [-3334, 544]	0.158	-0.98 [-5.82, 3.95]	0.691
Time to death (months)		685 [632, 739]	<0.0001	1.80 [1.67, 1.93]	<0.0001
LVP procedures in LYOL (per episode)		1796 [1730, 1862]	<0.0001	1.92 [1.76, 2.09]	<0.0001
Non-LVP episodes (per episode)		925 [901, 950]	<0.0001	1.01 [0.94, 1.07]	<0.0001
Observations⁺⁺		13, 815		13, 790	

+ As predicted by generalised linear model

++ Only observations with a complete set of dependent and independent variables included in analysis (supplementary table 4 details missing data)

ArLD: Alcohol related liver disease, HCC: Hepatocellular carcinoma, LVP: Large volume paracentesis, LYOL: Last year of life, NASH: Non-alcoholic steatohepatitis

TABLE 3 – IMPACT OF INDEPENDENT VARIABLES ON ODDS RATIOS FOR EARLY UNPLANNED READMISSION IN THE LAST YEAR OF LIFE AND UNPLANNED HOSPITAL DEATH ⁺

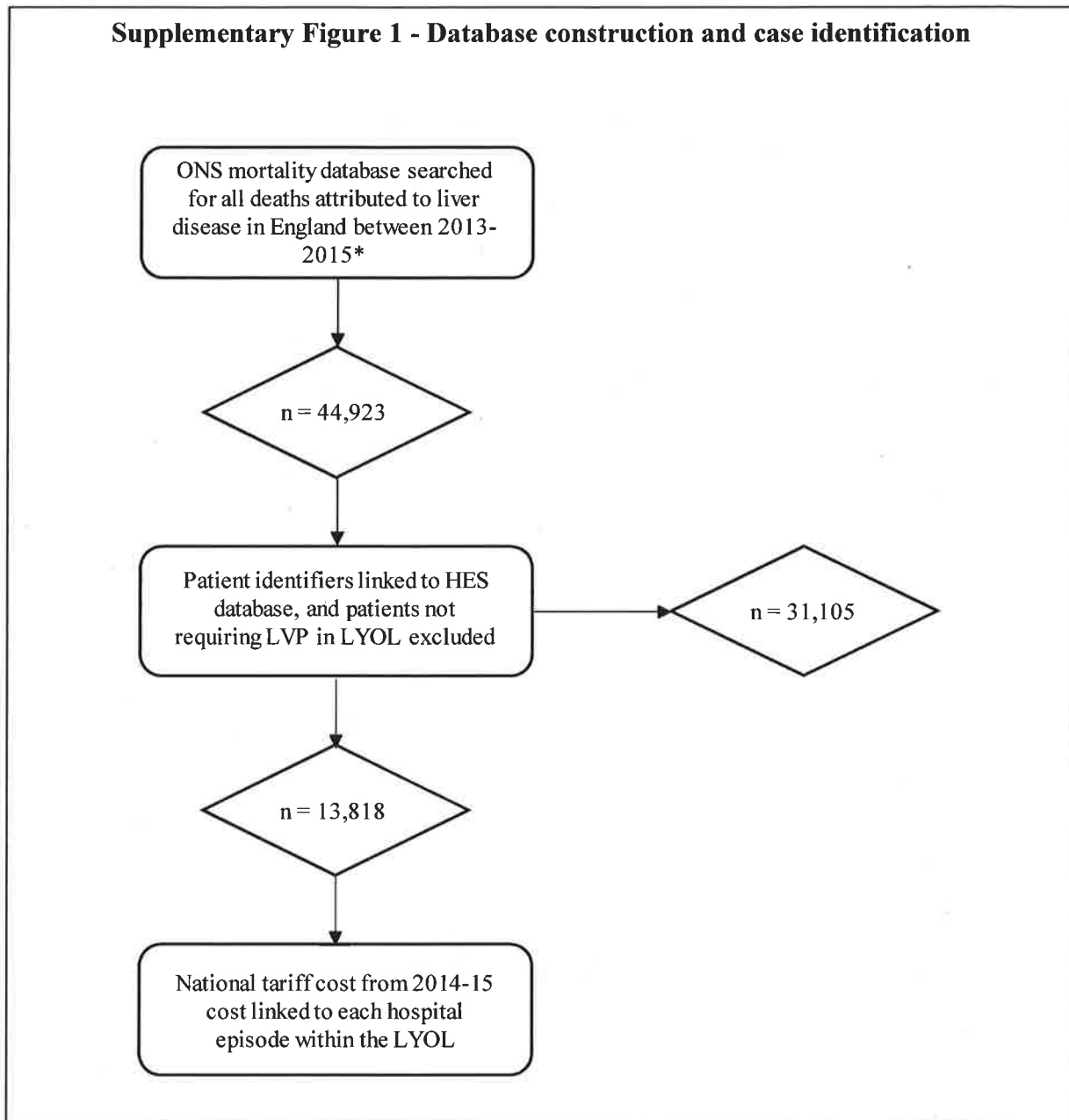
		Early unplanned readmission		Unplanned hospital death	
		OR [95% CI]	p-value	OR [95% CI]	p-value
Gender	Female		Reference group		
	Male	1.06[0.97,1.16]	0.173	0.91 [0.83,0.99]	0.034
Ethnicity	White British				
	Not white British	1.22[1.08,1.36]	0.001	1.17 [1.04,1.31]	0.007
Age at death (decades)		1.22[1.08,1.36]	0.001	1.17 [1.04,1.31]	0.007
Deprivation quintile (1=most deprived)	1		Reference group		
	2	1.04[0.92,1.17]	0.513	0.92[0.82,1.04]	0.177
	3	0.97[0.86,1.10]	0.668	0.90[0.80,1.02]	0.111
	4	0.95[0.83,1.08]	0.412	0.83 [0.73,0.95]	0.006
	5	1.02[0.89,1.17]	0.77	0.82 [0.72,0.94]	0.005
Year of death	2013		Reference group		
	2014	1.04[0.94,1.15]	0.449	0.90 [0.81,1.00]	0.043
	2015	1.02[0.92,1.13]	0.672	0.92[0.83,1.02]	0.126
Enrolled in day-case service?	No (unplanned care)		Reference group		
	Yes (planned care)	0.35[0.31,0.40]	0	0.31[0.27,0.34]	0
Cause of death	ArLD				
	Viral	1.42[1.10,1.83]	0.006	0.71 [0.55,0.92]	0.009
	NASH	1.13[0.97,1.32]	0.116	0.88[0.75,1.03]	0.108
	HCC	1.04[0.91,1.19]	0.542	0.16[0.14,0.18]	0
	Other	1.14[1.02,1.28]	0.026	0.53[0.48,0.60]	0
Place of death	Hospital		Reference group		
	Care home	1.10[0.91,1.33]	0.325	Place of death omitted as an independent variable due to co-linearity	
	Home	0.80[0.71,0.90]	0		
	Hospice	0.86[0.71,1.03]	0.098		
	Other Places	1.10[0.91,1.33]	0.325		
Time to death (months)	0.90[0.89,0.91]	0	0.92[0.91,0.93]		0
LVP procedures in LYOL (episodes)	1.28[1.25,1.31]	0	1.01 [1.00,1.03]	0.027	
Non LVP episodes in LYOL (episodes)	1.27[1.26,1.29]	0	1.02[1.01,1.02]	0	
Observations ⁺⁺		11,731		13,790	

⁺ ORs exponentiated from multivariable logistic regression models

⁺⁺ Only observations with a complete set of dependent and independent variables included in analysis (supplementary table 4 details missing data). Patients who died on index admission not included in EUR model.

ArLD: Alcohol related liver disease, HCC: Hepatocellular carcinoma, LR: Likelihood ratio, LVP: Large volume paracentesis, LYOL: Last year of life, NASH: Non-alcoholic steatohepatitis

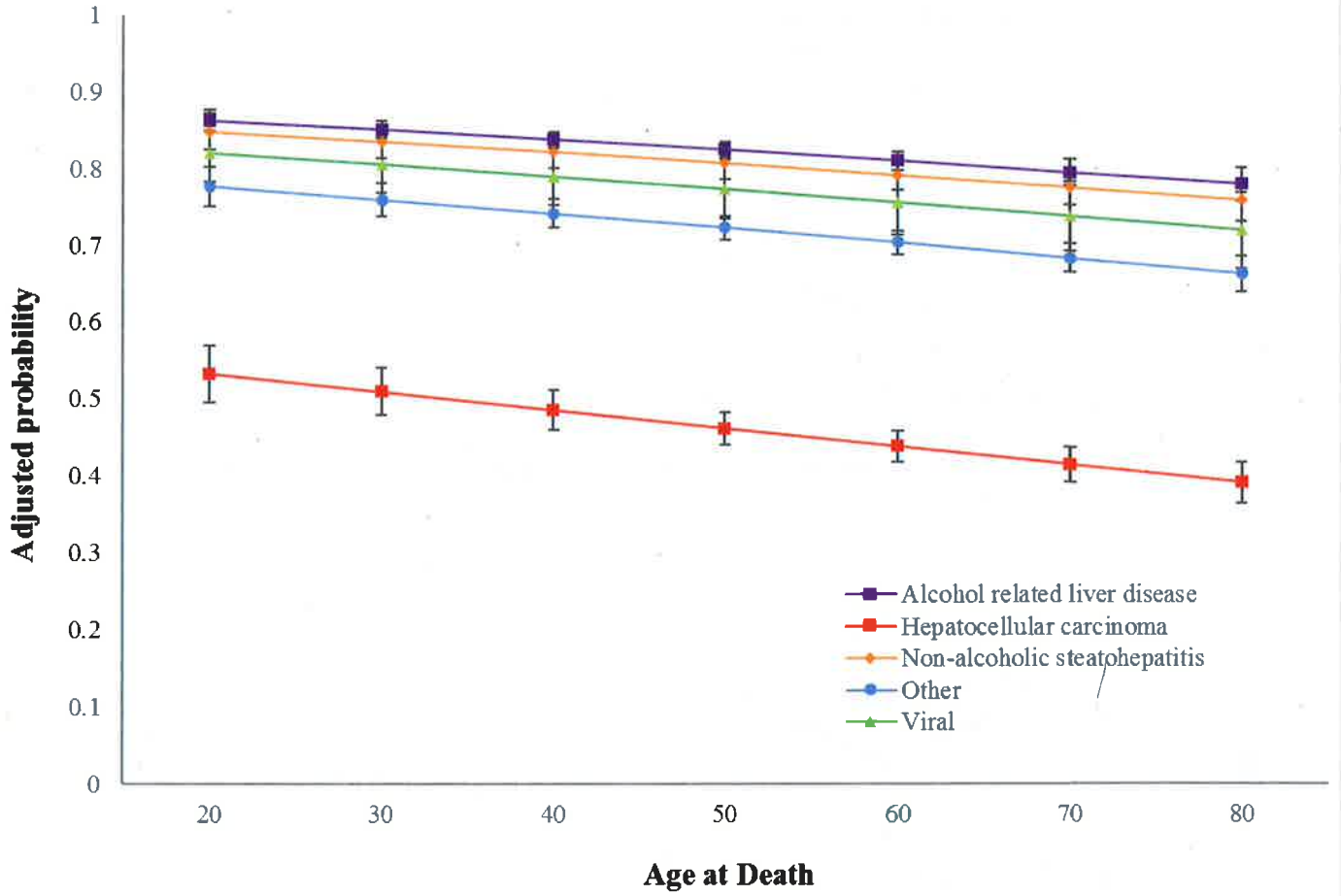
Supplementary Figure 1 - Database construction and case identification



* Deaths extracted from the ONS mortality database using the following ICD-10 codes: K70 (alcohol related liver disease); B008, B251, B15, B16, B17, B18, B19 (viral liver disease); K760 (non-alcoholic steatohepatitis); C220 (hepatocellular carcinoma); B581, D868, I820, K71, K83, T391, Y830, Z944 (other liver diseases)

Figure legend; HES: Hospital episode statistics; ICD-10: International Statistical Classification of Diseases and Related Health Problems (10th revision); LVP: Large volume paracentesis; LYOL: Last year of life; ONS: Office for National Statistics

Supplementary Figure 2 – Adjusted probability of unplanned hospital death by cause of death and age (95% confidence intervals)



SUPPLEMENTARY TABLE 1 – IMPACT OF INDEPENDENT VARIABLES ON COST AND INPATIENT BED DAYS IN LAST YEAR OF LIFE AMONG PATIENTS ENROLLED IN A DAY CASE SERVICE +

		Cost in LYOL ⁺		Inpatient bed days in LYOL ⁺	
		£ (95% CI)	p-value	Days (95% CI)	p-value
Gender	Female		Reference group		
	Male	963 [-194,2120]	0.103	-2.00 [-4.29,0.30]	0.088
Ethnicity	White British		Reference group		
	Non-white British	-176 [-1681,1328]	0.818	4.61 [1.63,7.59]	0.002
Age at death (per decade)		-548 [-1046, -50]	0.031	-0.22 [-1.21,0.77]	0.665
Deprivation quintile	1		Reference group		
	2	-1239 [-2827,349]	0.126	-1.18 [-4.33,1.97]	0.461
	3	-1164 [-2762,433]	0.153	-0.79 [-3.96,2.38]	0.624
	4	-495 [-2141,1151]	0.556	-1.54 [-4.80,1.72]	0.355
	5	-2166 [-3950,-382]	0.017	-1.12 [-4.66,2.41]	0.533
Year of death	2013		Reference group		
	2014	2909 [1557,4261]	<0.0001	1.06 [-1.63,3.74]	0.44
	2015	4170 [2872,5469]	<0.0001	-0.14 [-2.71,2.44]	0.916
Paracentesis ratio (per increase of 0.1)⁺⁺		-1939 [-2131,-1748]	<0.0001	-4.71 [-5.09,-4.33]	0
Cause of death	ArLD		Reference group		
	Viral	-770 [-3829,2288]	0.622	-0.65 [-6.71,5.41]	0.834
	NASH	-1792 [-3657,73]	0.06	-2.98 [-6.68,0.72]	0.114
	HCC	-4505 [-6103,-2907]	<0.0001	-8.95 [-12.11,-5.78]	0
	Other	-1566 [-3090,-43]	0.044	-3.57 [-6.59,-0.55]	0.021
Place of death	Hospital		Reference group		
	Care home	-44 [-2451,2364]	0.972	10.94 [6.17,15.71]	0
	Home	-3000 [-4333,-1666]	0	-5.01 [-7.65,-2.36]	0
	Hospice	-1277 [-3169,616]	0.186	-1.98 [-5.73,1.77]	0.301
	Other Places	83 [-4112,4279]	0.969	-1.03 [-9.35,7.29]	0.808
Time to death (months)		515 [338,692]	0	1.34 [0.99,1.69]	0
LVP procedures in LYOL (per episode)		1384 [1286,1482]	0	0.90 [0.71,1.09]	0
Non-LVP episodes (per episode)		586 [540,633]	0	0.50 [0.40,0.59]	0
Observations		2,625		2,624	

+ As predicted by generalised linear model

++ Change in outcome associated with a step change in the paracentesis ratio of +0.1 (i.e. increasing the proportion LVPs performed in a day-case setting by 10% in the LYOL, e.g. 3 day-case 7 inpatient vs 2 day-case 8 inpatient)

HCC: Hepatocellular carcinoma, LVP: Large volume paracentesis, LYOL: Last year of life, NASH: Non-alcoholic steatohepatitis

SUPPLEMENTARY TABLE 2 - IMPACT OF INDEPENDENT VARIABLES ON ODDS RATIOS FOR EARLY UNPLANNED READMISSION IN THE LAST YEAR OF LIFE AND UNPLANNED HOSPITAL DEATH AMONG PATIENTS ENROLLED IN A DAY-CASE LVP SERVICE⁺

		Early unplanned readmission		Unplanned hospital death		
		OR [95% CI]	p-value	OR [95% CI]	p-value	
Gender	Female			<i>Reference group</i>		
	Male	0.86	[0.69,1.07]	0.180	0.93	[0.77,1.11] 0.414
Ethnicity	White British			<i>Reference group</i>		
	Non-white British	1.53	[1.15,2.04]	0.004	0.91	[0.72,1.15] 0.441
Age at death		1.01	[1.00,1.01]	0.270	1	[0.99,1.00] 0.248
Deprivation quintile (1=most deprived)	1			<i>Reference group</i>		
	2	1.19	[0.88,1.61]	0.254	1.23	[0.96,1.58] 0.101
	3	0.93	[0.69,1.25]	0.612	1.07	[0.83,1.37] 0.598
	4	0.87	[0.64,1.18]	0.363	0.99	[0.76,1.27] 0.912
	5	1.14	[0.81,1.59]	0.453	0.93	[0.70,1.23] 0.603
Year of death	2013			<i>Reference group</i>		
	2014	1.12	[0.87,1.45]	0.388	1.07	[0.87,1.32] 0.535
	2015	1.03	[0.80,1.32]	0.819	0.98	[0.80,1.20] 0.856
Day-case paracentesis ratio		0.02	[0.01,0.03]	<0.0001	0.30	[0.22,0.40] <0.0001
Cause of death	ArLD			<i>Reference group</i>		
	Viral	1.58	[0.87,2.85]	0.133	0.8	[0.50,1.26] 0.327
	NASH	0.92	[0.65,1.31]	0.652	0.79	[0.59,1.04] 0.094
	HCC	0.95	[0.71,1.29]	0.763	0.22	[0.17,0.27] <0.0001
	Other	0.88	[0.66,1.17]	0.381	0.50	[0.40,0.63] <0.0001
Place of death	Hospital			<i>Reference group</i>		
	Care home	0.85	[0.55,1.32]	0.459		
	Home	0.82	[0.63,1.05]	0.112		
	Hospice	1.06	[0.74,1.52]	0.740		Omitted from regression due to co-linearity
	Other Places	1.8	[0.81,4.00]	0.152		
Time to death (days)		1.00	[1.00,1.00]	0.408	1.00	[1.00,1.00] 0.028
Number of LVP in LYOL (log)		1.13	[1.10,1.15]	<0.0001	1.02	[1.00,1.03] 0.027
Number of non-LVP hospital episodes in LYOL (log)		1.20	[1.17,1.23]	<0.0001	1.03	[1.01,1.04] <0.0001
Observations			2591			2591

⁺ Odds ratios exponentiated from multivariable logistic regression models

ArLD: Alcohol related liver disease, HCC: Hepatocellular carcinoma, LR: Likelihood ratio, LVP: Large volume paracentesis, LYOL: Last year of life, NASH: Non-alcoholic steatohepatitis

Supplementary table 3 - Distribution of missing data

There were 28 missing observations from the dataset which were distributed amongst the sample as listed below

		Missing data variable (n)	
		Inpatient bed days (n=25)	Age (n=3)
Gender	Female	10	1
	Male	15	2
Ethnicity	White British	22	1
	Non-white British	3	2
Deprivation quintile (1=most deprived)	1	5	1
	2	4	0
	3	8	0
	4	2	2
	5	6	0
Year of death	2013	9	0
	2014	12	0
	2015	4	3
Enrolled in day-case service?	No (unplanned care)	24	3
	Yes (planned care)	1	0
Cause of death	ArLD	12	0
	Viral	0	0
	NASH	2	1
	HCC	4	0
	Other	7	2
Place of death	Hospital	20	3
	Care home	1	0
	Home	3	0
	Hospice	1	0
	Other Places	0	0

SUPPLEMENTARY TABLE 4 – MOST COMMON HRG CODES IN DATASET, WITH TARIFFS APPLIED TO EACH EPISODE

(refer to <https://www.gov.uk/government/publications/national-tariff-payment-system-2014-to-2015> for full explanation of tariffs and costs applied)

HRG code	Number of appearances in dataset	HRG name	Outpatient procedure tariff (£)	Combined day case / ordinary elective spell tariff (£)	Day case spell tariff (£)	Ordinary elective spell tariff (£)	Ordinary elective long stay tripoint (days)	Non-elective spell tariff (£)	Non-elective long stay tripoint (days)	Per day long stay payment (for days exceeding tripoint) (£)	Reduced short stay emergency tariff applicable?	% applied in calculation of reduced short stay emergency tariff	Reduced short stay emergency tariff (£)
GCI5C	14358	Non-Malignant Liver Disorders with Major CCs	-	2,654	-	-	20	3,250	33	214	Yes	25%	813
FZ13Z	12529	General Abdominal Procedures	-	787	-	-	5	787	5	215	No	-	-
GCI5A	5812	Non-Malignant Liver Disorders with Catastrophic CCs	-	6,634	-	-	73	6,127	69	214	Yes	25%	1,532
FZ60Z	4348	Diagnostic Endoscopic Procedures on the Upper GI Tract 19 years and over	344	344	-	-	5	724	5	215	No	-	-
GCI5B	4337	Non-Malignant Liver Disorders with Severe CCs	-	4,259	-	-	32	4,435	46	214	Yes	25%	1,109
FZ47A	3786	Non-Malignant General Abdominal Disorders	-	2,795	-	-	21	2,795	21	215	No	-	-

GC01B	3593	with length of stay 2 days or more with Major CC	-	1,816	-	15	2,566	22	214	Yes	25%	642
FZ47C	3370	Liver Failure Disorders without Interventions	-	401	-	5	684	5	215	No	-	-
LA08E	3052	Non-Malignant General Abdominal Disorders with length of stay 1 day or less	-	265	-	5	489	5	202	No	-	-
GC12A	2663	Chronic Kidney Disease with length of stay 1 day or less associated with Renal Dialysis	-	2,205	-	15	2,988	32	214	No	-	-
FZ47B	2646	Malignant Liver and Pancreatic Disorders with length of stay 2 days or more	-	1,895	-	10	684	10	215	No	-	-
GC01A	2463	Non-Malignant General Abdominal Disorders with length of stay 2 days or more without Major CC	-	3,356	-	30	4,788	46	214	Yes	25%	1,197
		Liver Failure Disorders with Interventions	-		-							

GB02A	2089	Endoscopic/ Radiology category 3 with Major CC	-	3,456	-	-	-	13	5,294	44	214	No	-	-
FZ38F	1841	Gastrointest inal Bleed with length of stay 1 day or less	-	413	-	-	-	5	413	5	215	No	-	-
GCI2B	1434	Malignant Liver and Pancreatic Disorders with length of stay 1 day or less	-	410	-	-	-	5	528	5	214	No	-	-
DZ11A	1397	Lobar, Atypical or Viral Pneumonia with Major CC	-	4,107	-	-	-	46	3,166	32	192	Yes	25%	792
FZ38D	948	Gastrointest inal Bleed with length of stay 2 days or more with Major CC	-	2,634	-	-	-	24	2,634	24	215	No	-	-
WA03V	800	Septicaemia with Major CC	-	5,217	-	-	-	47	3,729	41	204	Yes	25%	932
WA18X	790	Admission for Unexplained Symptoms with Intermediate e CC	-	731	-	-	-	5	1,921	16	204	Yes	25%	480
GB02B	774	Endoscopic/ Radiology category 3 with Intermediate e CC	-	1,264	-	-	-	5	3,528	29	214	No	-	-
EB01Z	713	Non- Intervention al Acquired Cardiac Conditions	-	989	-	-	-	5	577	5	208	No	-	-
SA09D	635	Other Red Blood Cell	-	441	-	-	-	5	2,287	21	236	Yes	25%	572

GB03A	623	-	912	-	-	5	5,568	48	214	No	-	-	-	214	48	214	5,568	48	214	No	-	-	-
FZ29Z	589	-	611	-	-	5	2,327	20	215	No	-	-	-	215	20	215	2,327	20	215	No	-	-	-
JD03A	530	-	2,589	-	-	23	3,056	33	224	Yes	-	-	-	224	33	224	3,056	33	224	Yes	25%	-	764
AA22A	519	-	3,708	-	-	73	3,875	46	204	Yes	-	-	-	204	46	204	3,875	46	204	Yes	25%	-	969
LA07E	518	-	3,654	-	-	58	3,357	37	202	Yes	-	-	-	202	37	202	3,357	37	202	Yes	25%	-	839
WA03X	518	-	2,935	-	-	17	2,511	21	204	Yes	-	-	-	204	21	204	2,511	21	204	Yes	25%	-	628
AA26A	516	-	891	-	-	5	1,191	13	204	No	-	-	-	204	13	204	1,191	13	204	No	-	-	-
FZ31D	513	-	3,879	-	-	36	3,816	43	215	No	-	-	-	215	43	215	3,816	43	215	No	-	-	-

FZ43C	502	Oesophagus with length of stay 2 days or more with Major CC	-	366	-	-	-	-	-	5	377	5	215	No	-	-
		Non-Malignant Stomach or Duodenum Disorders with length of stay 1 day or less	-													