



Brück, J., & Davies, A. (2018). The Social Role of Non-metal 'Valuables' in Late Bronze Age Britain. *Cambridge Archaeological Journal*, 28(4), 665. Article 688. Advance online publication. <https://doi.org/10.1017/S095977431800029X>

Peer reviewed version

Link to published version (if available):
[10.1017/S095977431800029X](https://doi.org/10.1017/S095977431800029X)

[Link to publication record on the Bristol Research Portal](#)
PDF-document

This is the author accepted manuscript (AAM). The final published version (version of record) is available online via Cambridge University Press at <https://www.cambridge.org/core/journals/cambridge-archaeological-journal/article/social-role-of-nonmetal-valuables-in-late-bronze-age-britain/C7C0B2B21AEE539FC6555974373BDCE1> . Please refer to any applicable terms of use of the publisher.

University of Bristol – Bristol Research Portal

General rights

This document is made available in accordance with publisher policies. Please cite only the published version using the reference above. Full terms of use are available: <http://www.bristol.ac.uk/red/research-policy/pure/user-guides/brp-terms/>

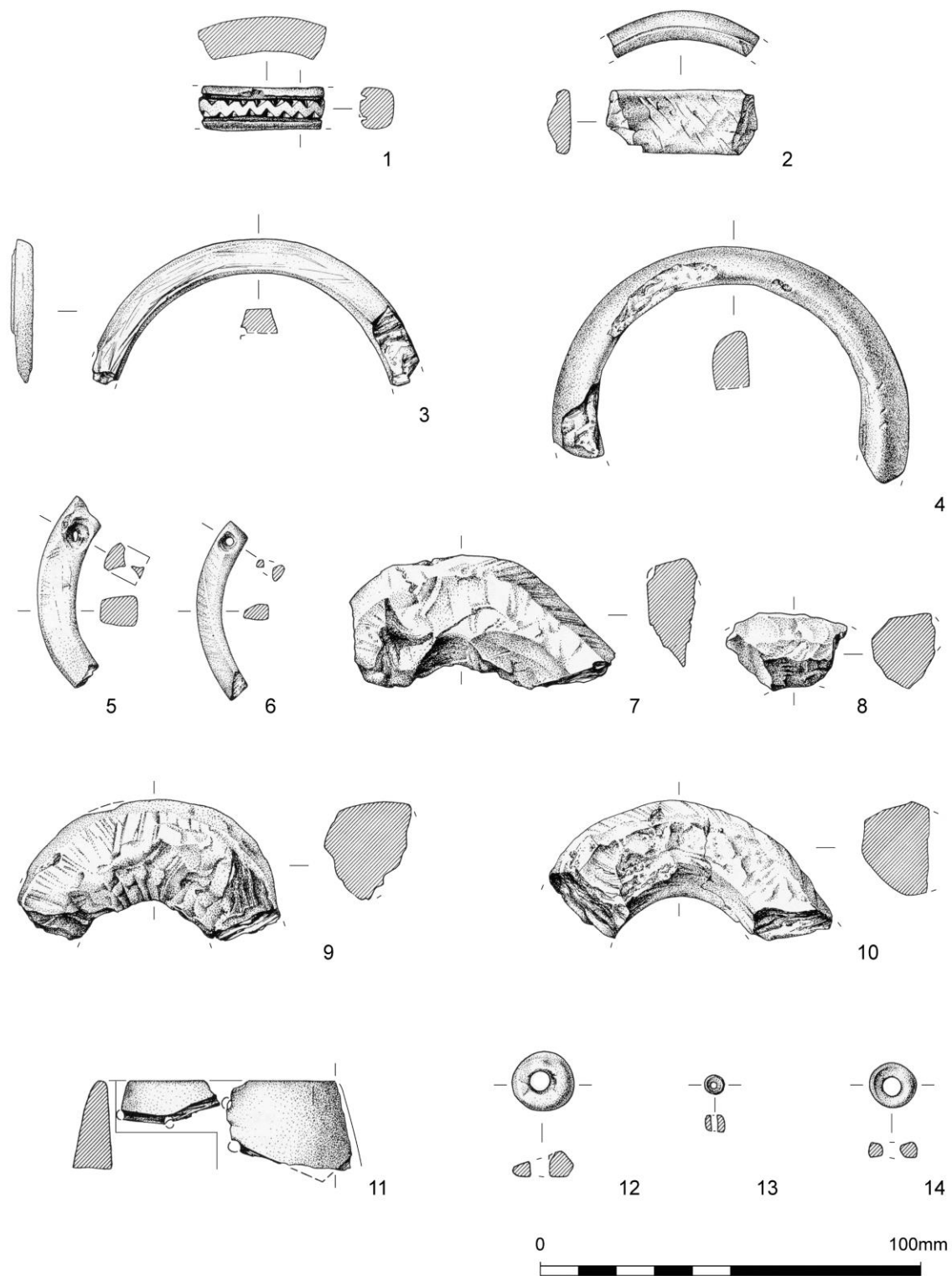


Figure 1: A selection of the amber and jet/jet-like artefacts from the midden at Potterne, Wiltshire: 1-4 jet/jet-like armlets; 5-6 jet/jet-like pendants; 7-10 jet/jet-like armlet roughouts; 11 jet/jet-like bowl fragments; 12-14 amber beads (after Wyles 2000, fig. 81, with minor amendments by Anne Leaver)

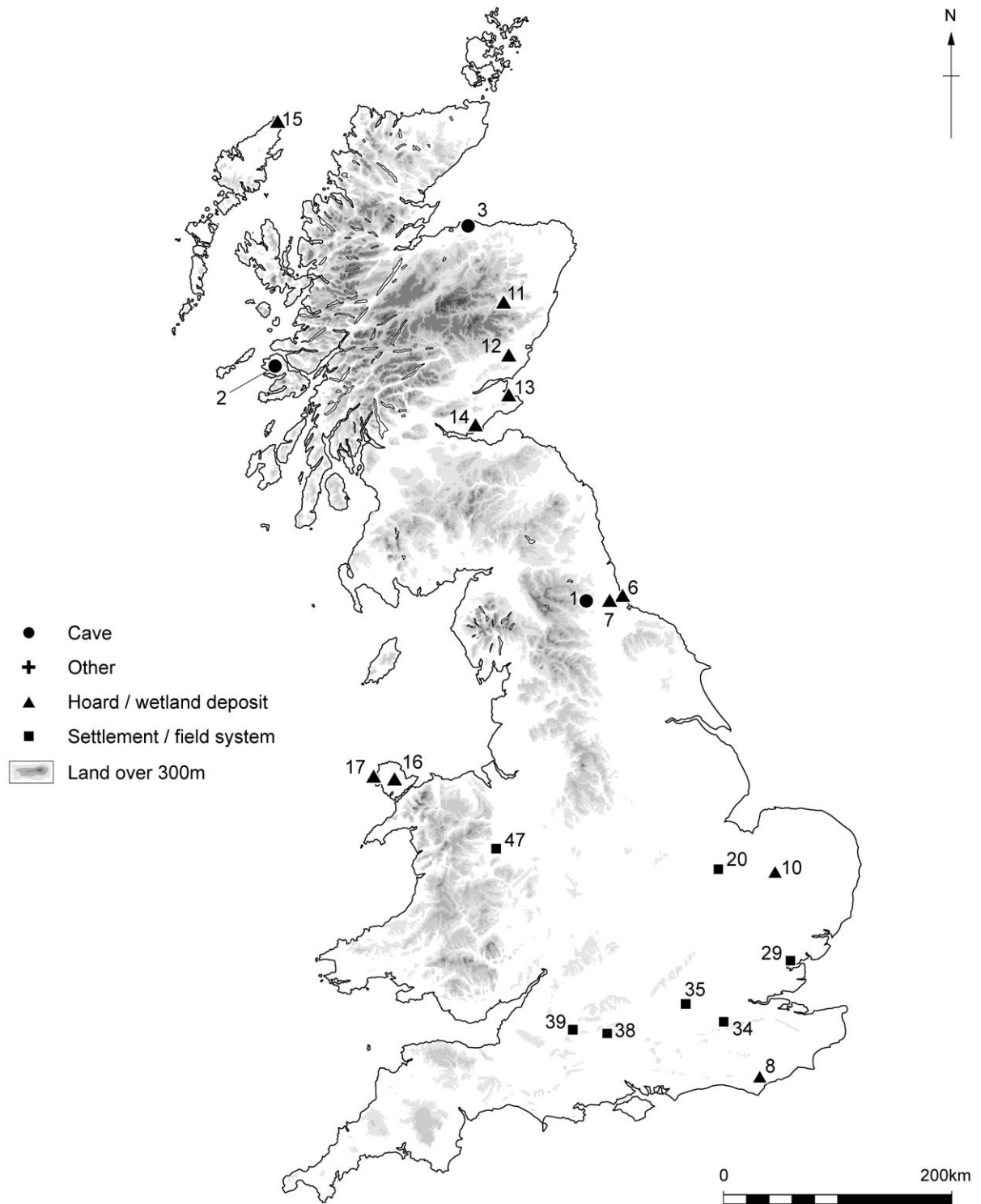


Figure 2: Distribution of amber artefacts (drawn by Anne Leaver; see appendix for site names)

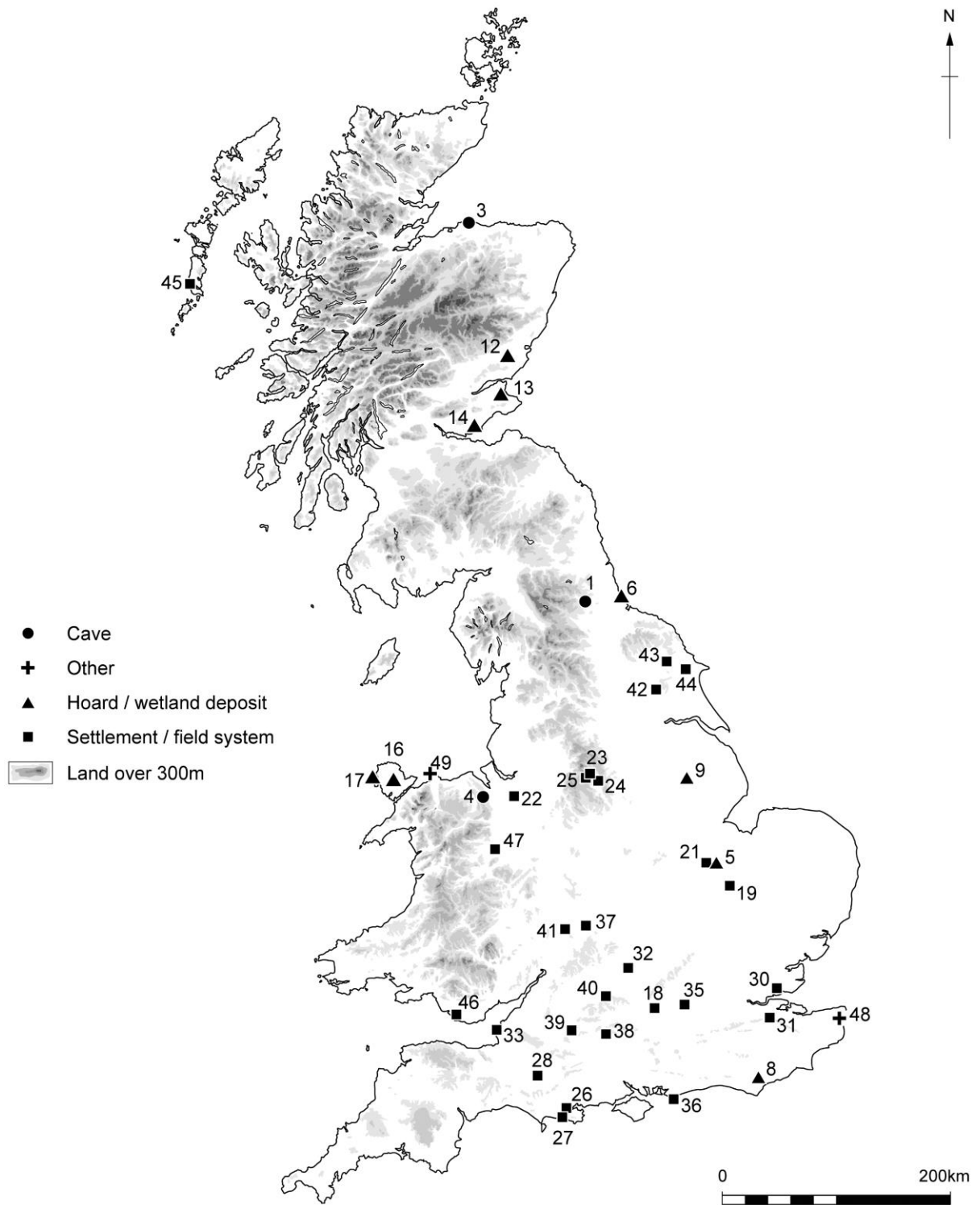


Figure 3: Distribution of jet/jet-like artefacts (drawn by Anne Leaver; see appendix for site names)

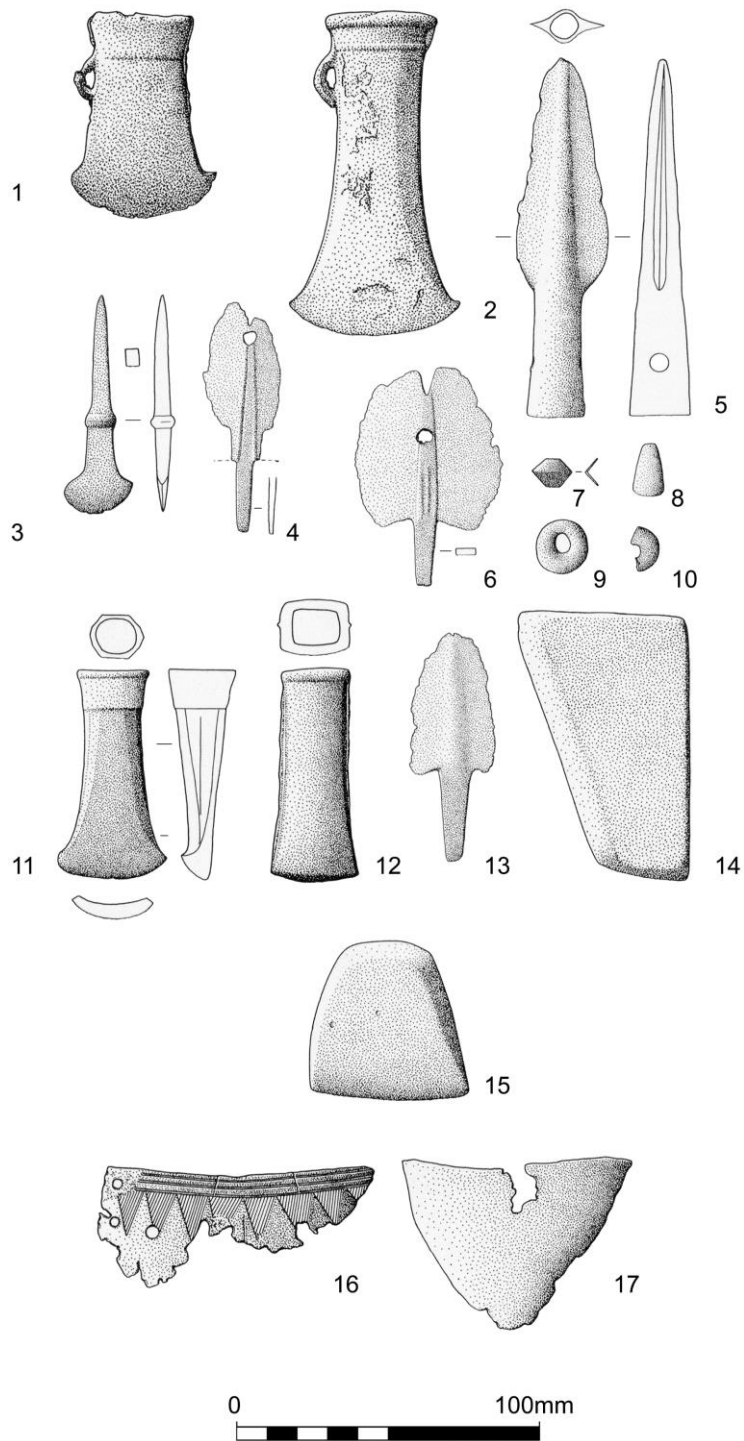


Figure 4: The hoard from Adabrock: 1-2 socketed axes; 3 chisel; 4, 6, 13 razors; 5 spearhead; 7 gold bead; 8 glass bead; 9-10 amber beads; 11 socketed gouge; 12 socketed hammer; 14-15 whetstones; 16-17 bronze bowl fragments (after Schmidt and Burgess 1981, pl. 144, with minor amendments by Anne Leaver)

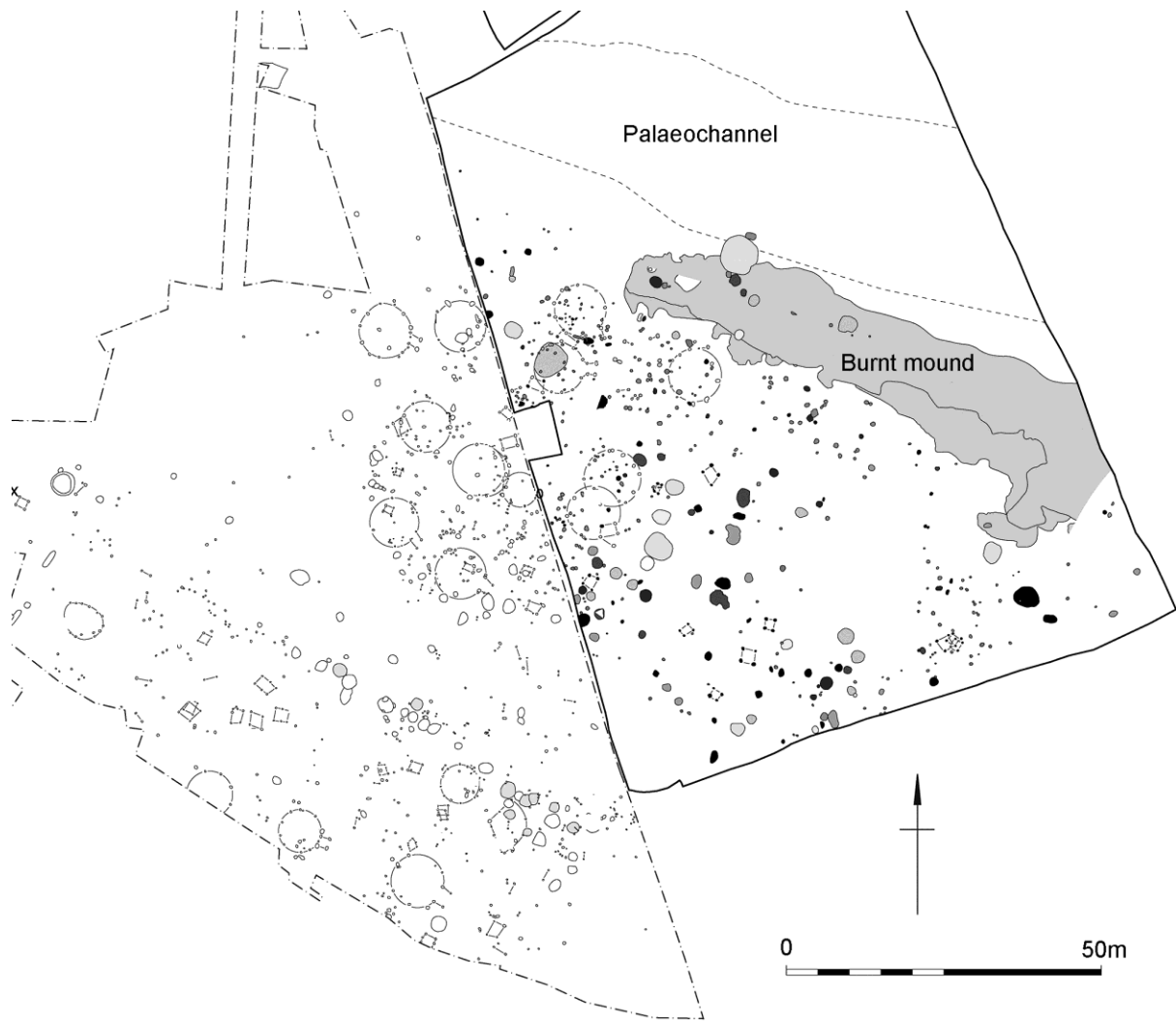


Figure 5: A jet/jet-like armlet fragment was found in the burnt mound that ran along one edge of the settlement at Green Park (after Brossler *et al.* 2004, fig. 3.7, with minor amendments by Anne Leaver)



Figure 6: This jet/jet-like armband from Potterne had been snapped in half prior to deposition