



Wakefield, D., Bayly, J., Selman, L., Firth, A. M., Higginson, I., & Murtagh, F. (2018). Patient empowerment, what does it mean for adults in the advanced stages of a life-limiting illness: A systematic review using critical interpretive synthesis. *Palliative Medicine*, 32(8), 1288-1304. <https://doi.org/10.1177/0269216318783919>

Publisher's PDF, also known as Version of record

License (if available):  
CC BY-NC

Link to published version (if available):  
[10.1177/0269216318783919](https://doi.org/10.1177/0269216318783919)

[Link to publication record in Explore Bristol Research](#)  
PDF-document

## University of Bristol - Explore Bristol Research

### General rights

This document is made available in accordance with publisher policies. Please cite only the published version using the reference above. Full terms of use are available:  
<http://www.bristol.ac.uk/red/research-policy/pure/user-guides/ebr-terms/>

# Patient empowerment, what does it mean for adults in the advanced stages of a life-limiting illness: A systematic review using critical interpretive synthesis

*Palliative Medicine*  
2018, Vol. 32(8) 1288–1304  
© The Author(s) 2018



Reprints and permissions:  
sagepub.co.uk/journalsPermissions.nav  
DOI: 10.1177/0269216318783919  
journals.sagepub.com/home/pmj



Dominique Wakefield<sup>1</sup> , Jo Bayly<sup>1</sup>, Lucy Ellen Selman<sup>2</sup> ,  
Alice M Firth<sup>1</sup>, Irene J Higginson<sup>1</sup>  and Fliss EM Murtagh<sup>3</sup>

## Abstract

**Background:** Patient empowerment, defined as ‘a process through which people gain greater control over decisions and actions affecting their health’ (World Health Organization) is a key theme within global health and social care strategies. The benefits of incorporating empowerment strategies in care are well documented, but little is known about their application or impact for patients with advanced, life-limiting illness(s).

**Aim:** To identify and synthesise the international evidence on patient empowerment for adults with advanced, life-limiting illness(s).

**Design:** Systematic review (PROSPERO no. 46113) with critical interpretive synthesis methodology.

**Data sources:** Five databases (MEDLINE, Embase, CINAHL, PsycINFO and Cochrane) were searched from inception to March 2018. Grey literature and reference list/citation searches of included papers were undertaken. Inclusion criteria: empirical research involving patients with advanced life-limiting illness including descriptions of, or references to, patient empowerment within the study results.

**Results:** In all, 13 papers met inclusion criteria. Two qualitative studies explored patient empowerment as a study objective. Six papers evaluated interventions, referencing patient empowerment as an incidental outcome. The following themes were identified from the interpretive synthesis: self-identity, personalised knowledge in theory and practice, negotiating personal and healthcare relationships, acknowledgement of terminal illness, and navigating continued losses.

**Conclusion:** There are features of empowerment, for patients with advanced life-limiting illness distinct to those of other patient groups. Greater efforts should be made to progress the empowerment of patients nearing the end of their lives. We propose that the identified themes may provide a useful starting point to guide the assessment of existing or planned services and inform future research.

## Keywords

Patient participation, terminal care, power (psychology), health behaviour, palliative care, self-care, review

### What is already known about the topic?

- Healthcare systems globally are faced with the challenge of how best to support growing older populations with complex medical and social needs.
- Models of care incorporating patient empowerment strategies are being increasingly adopted in response to these population changes with the aim of alleviating the impact of morbidity on people’s lives and reducing the demands placed on health and social care services.
- Little is known about the application or impact of empowerment strategies for patients with advanced, life-limiting illness(s).

<sup>1</sup>Department of Palliative Care, Policy & Rehabilitation, Cicely Saunders Institute, King’s College London, London, UK

<sup>2</sup>Bristol Randomised Trials Collaboration (BRTC), School of Social and Community Medicine, Faculty of Health Sciences, University of Bristol, Bristol, UK

<sup>3</sup>Wolfson Palliative Care Research Centre, Hull York Medical School, University of Hull, Hull, UK

### Corresponding author:

Dominique Wakefield, Department of Palliative Care, Policy & Rehabilitation, Cicely Saunders Institute, King’s College London, Bessemer Road, London SE5 9PJ, UK.

Email: dominique.wakefield@nhs.net

**What this paper adds?**

- To our knowledge, this is the first review to explore the concept of patient empowerment for adults living with advanced, life-limiting illness.
- There are features of empowerment, for patients with advanced life-limiting illness, distinct to those of other patient groups. Key differences relate to the continued physical and psychosocial challenges this group encounter, producing contrasting patient empowerment foci.
- Our review found no evidence of attempts to incorporate patient empowerment into the design or evaluation of services that support people with advanced life-limiting illness.

**Implications for practice, theory or policy**

- We would propose that the identified themes and conceptual model produced in review may provide a useful starting point to guide the assessment of existing services and development of a new dialogue surrounding patient participation in the design of services and interventions.

**Background**

The impact of the continuing rise in global average life expectancy is already apparent in many countries with growing older populations with complex medical and social needs.<sup>1–3</sup> The concept of ‘patient empowerment’ has gained traction in recent years, responding to these population challenges with the aim of alleviating the impact of morbidity on people’s lives and limiting the demands high levels of morbidity place on health and social care services.<sup>4</sup>

There are various definitions and applications of patient empowerment (termed ‘patient activation’, in some texts) used within healthcare, with the largest body of research in long-term conditions. Here, the empowerment paradigm involves patients reclaiming their responsibilities to improve and maintain their health, in parallel with a reformation of the patient–doctor relationship<sup>4–6</sup> that encourages equitable partnerships over an authoritative dynamic.<sup>7</sup> Self-management and self-efficacy are key features within the majority of patient empowerment constructs, with a growing number of measures used in practice to assess, monitor and promote these qualities.<sup>5,8,9</sup> There is increasing evidence that patient empowerment is effective and beneficial. Helping patients to achieve improved health states reduces the impact on services and engenders continued participation and motivation from healthcare professionals (HCPs) and patients.<sup>10,11</sup> Consequently, patient empowerment has gained the attention of policy makers on a global scale, with mandates for, and investment into, initiatives and service structures to empower patients now commonplace.<sup>12–15</sup>

Existing empowerment tools and models assume a degree of reversibility to patients’ health states and/or the potential to inhibit the progression of a negative health state by means of improved self-care, lifestyle choices and relations with HCPs and services.<sup>5,8,11,16</sup> From the perspective of advanced illness, when there is not the potential for health gains, or when disability impedes function and

capacity to self-manage and forces dependency on others, these tools and models may cease to be appropriate. This results in this population being inappropriately assessed and subsequently underserved.

This review intends to appraise the international evidence surrounding definitions and/or concepts pertaining to patient empowerment for persons living with advanced, life-limiting disease, with the aim of understanding whether patients can still be ‘empowered’ in the context of advanced, terminal illness and/or whether these patients fall outside of the measures, models and services designed around the current understanding and constructs of ‘patient empowerment’.

**Research questions**

1. How has empirical research defined ‘patient empowerment’ for adults in the advanced stages of a life-limiting illness.
2. What factors/themes are associated with patient empowerment for adults in the advanced stages of a life-limiting illness.
3. Which interventions or exposures seek to support or promote patient empowerment for adults in the advanced stages of a life-limiting illness.

**Methods****Design**

We followed systematic review best practices to formulate a search strategy underpinned by study objectives and inclusion criteria, as specified in our registered protocol.<sup>17</sup> Which is combined with critical interpretive synthesis<sup>18</sup> methodology to integrate data across studies.

Critical interpretive synthesis methodology, developed by Dixon-Woods et al.,<sup>18</sup> is an iterative approach designed

to appraise and synthesise complex and heterogeneous quantitative and qualitative evidence, in a bid to develop a novel definition, concept or theory. We specifically selected this method for its ability to inform the review question, identification and selection of evidence, as well as synthesis of evidence. The orientation of critical interpretive synthesis towards theory generation makes its practice distinct from that of meta-ethnography and other qualitative synthesis methods.

We adopted this methodology based on the findings of our initial scoping of the literature, which aimed to identify empirical research on empowerment for adults in the advanced stages of a life-limiting illness. This exercise identified a small body of literature of methodological heterogeneity, highlighting the challenges of attempting to collate and synthesise evidence where the phenomenon of interest is not well specified and where evidence is very heterogeneous in both type and purpose. These findings, and our aim to contrast our results with existing evidence on empowerment for other patient groups and to build conceptual understanding, informed our decision to conduct a critical interpretive synthesis, rather than use traditional aggregative review methodology. This enabled insights into the concepts underpinning empowerment to emerge through an iterative, dynamic and critical synthesis of the literature.

### Search strategy

Search terms (Appendix 1) were generated from the existing research and theoretical literature surrounding patient empowerment and activation.<sup>4,6,16,19,20</sup> We subsequently trialled various combinations of concept headings and search terms before settling on a broad search strategy, accepting that we would obtain a large volume of papers of high specificity and low sensitivity.

Screening papers for inclusion was performed by D.W., with queries pertaining to inclusion discussed with F.E.M.M.

### Data sources

The following databases were searched from inception to week 2 March 2018: MEDLINE, Embase, CINAHL, PsycINFO and The Cochrane Database of Systematic Reviews. We also searched Grey literature (Open Grey Database), reference lists of included papers and relevant systematic reviews identified during screening. Pre-determined inclusion and exclusion criteria were applied during screening.

### Inclusion criteria

Empirical research included descriptions of, or references to, patient empowerment within their results, irrespective of whether empowerment featured in the objectives of the

study. Included studies report solely on adult patients (>18 years of age) with end-stage, advanced, terminal and/or life-limiting illness and/or who were defined as receiving non-curative management or palliative care support. We utilised the master search strategy developed by Sladek et al.<sup>20</sup> to support the capture of literature relevant to palliative care in general medical journals.

We included studies incorporating a mix of participants, including informal carers and HCPs, only in circumstances where patient reported data could be separated and extracted. In recognition of variations in service provision and healthcare constructs internationally,<sup>21,22</sup> we selected to focus on features of empowerment specific to patients.

For the purposes of the interpretative review, we retained and kept separately papers, identified during screening, that were clearly concerned with aspects of patient empowerment but included participants with a mixture of both advanced life-limiting disease and a range of other disease states/stages. These papers were later used to compare empowerment themes between the other disease groups and patients with advanced life-limiting disease to support the dialectic processes of the interpretive review.

### Exclusion criteria

To capture generalisable features of empowerment in this patient group, we excluded studies with single decision-specific foci, for example, decisions to withdraw dialysis and advance care planning for single-disease groups. Conference abstracts and non-empirical papers were also excluded. There were no language limitations.

We excluded fatally flawed papers identified using the quality appraisal criteria (as cited by Dixon-Woods et al.<sup>18</sup>):

- Are the aims and objectives of the research clearly stated?
- Is the research design clearly specified and appropriate for the aims and objectives?
- Do researchers provide a clear account of the process by which their findings were produced?
- Do the researchers display enough data to support their interpretations and conclusions?
- Is the method of analysis appropriate and adequately explicated?

Each potentially included paper was scrutinised, using these criteria, and discussed by at least two of the authors (D.W., J.B. and F.E.M.M.) before deciding on inclusion or exclusion.

### Synthesis

First, we considered the context and potential influences and assumptions that underpinned the results related to

empowerment. Second, we contrasted the data against the retained purposive selection of papers that included a mixture of participants with both advanced life-limiting disease and a range of other disease states/stages. We contrasted papers to observe and address any gaps, to ensure that the papers solely describing our population of interest were adequately addressing the subject matter, while also constantly testing and challenging our emerging theories against the available evidence for other patient populations. Third, we mapped the results to a variety of existing frameworks and models of empowerment originally designed for patients with long-term conditions and/or non-specific patient groups.<sup>4,5,16,23,24</sup> This process, which involved repeated evaluation and testing of the data, created opportunities to observe whether interpretations altered when applying a variety of perspectives during the mapping process. This exposed the contrasting features of empowerment for our population of interest when compared to the patient groups represented by the models and frameworks. The mismatch between existing models and our data demonstrated the inadequacy of the models in describing patient empowerment in advanced disease and prompted our generation of a new conceptual model.

Of the included studies, 25% were randomly selected and dual coded (J.B. and D.W.) to enhance reliability alongside regular meetings to discuss all aspects of the design and conduct of this review (D.W. and F.E.M.M.).

## Results

A total of 20,591 papers were screened, but only 13 papers met our inclusion criteria after quality assessment (Figure 1). Countries represented across the 13 papers were the United Kingdom ( $n=5$ ),<sup>25-29</sup> the United States ( $n=3$ ),<sup>27,30,31</sup> Australia ( $n=3$ ),<sup>31-33</sup> Ireland ( $n=2$ ),<sup>27,34</sup> the Netherlands ( $n=1$ )<sup>35</sup> and Norway ( $n=1$ ).<sup>36</sup> There were seven qualitative studies and six mixed method studies, the characteristics of which are summarised in Tables 1 and 2, respectively.

Data were of three types: patient quotes,<sup>27-29</sup> the author's words when discussing the study results<sup>25, 26, 29-33, 35-37</sup> and the reported outcome/s of interventions. Of the 13 studies, 7 included participants with cancer diagnoses, while the remaining 6 included a mix of cancer and non-cancer patient groups. No discernible differences were identified between the cancer and non-cancer groups with respect to patient empowerment.

Two papers had the stated aim of exploring empowerment in our population of interest.<sup>27,33</sup> We were unable to identify any interventions designed with the specific aim of empowering patients with advanced disease. Six papers evaluated interventions, referencing patient empowerment as an incidental outcome.<sup>28,29,31,34,36,37</sup> The remaining five papers, referencing empowerment within their results, were qualitative studies exploring living with multiple

symptoms,<sup>32</sup> experiences of uncertainty,<sup>25</sup> the concept of chronic cancer,<sup>26</sup> relational ethics of hope<sup>35</sup> and experiences of self-management.<sup>30</sup>

The interventions associated with empowering patient outcomes included single-component interventions (Question Prompt Lists, Patient Satisfaction Questionnaires and a Patient-Reported Outcome Measure) and complex interventions (Breathlessness Support Service, lifestyle interventions and multi-component educational and care management palliative care intervention).

Our critical interpretative synthesis generated five overarching themes, illustrated in Table 3 (Appendix 2) and discussed in the following. The proposed conceptual model (Figure 2.) illustrates the interplay and relationships of these themes.

### Self-identity

Eight papers described the importance of self-identity as both a process to becoming empowered and being empowered. Self-identity, in the context of empowerment, reflects the beliefs a patient has about themselves, expressed, although not exclusively, in terms of self-esteem, self-image and ideal-self.

Maintaining routines, particularly with respect to personal-care activities, positively benefitted autonomy and self-esteem, reinforced by HCPs or families encouraging patient involvement in daily basic and important decisions. Maintaining a daily schedule was also described as a motivating element to 'keep living in the face of death'.<sup>33</sup> However, the ability for patients to control or partake in daily basic care activities was challenged by the timetabling of care and imposition of non-negotiable health and social care both in community and hospital settings.<sup>27,33</sup> This blanket caregiving created a 'defy or comply' response from patients, depending on their strength and/or confidence to challenge professionals.<sup>33</sup>

Receiving the respect of others, reflected in being acknowledged, and being afforded privacy and inclusion despite disability were key features of empowerment.<sup>27,28,33,36</sup> Experiencing overt changes to one's physical appearance, described by one patient as 'shrinking', poses a significant threat to confidence and generates a fear that others will fail to recognise patients' power, identity and capabilities as bodies transform.<sup>33</sup>

### Personalised knowledge in theory and in practice

The need for personalised illness education that emphasises the pathophysiology of symptoms to support understanding of symptom management emerged as a component of becoming empowered. Merely providing knowledge and skills around symptom management was highlighted as insufficient.<sup>27</sup> Personalised information provision, at the

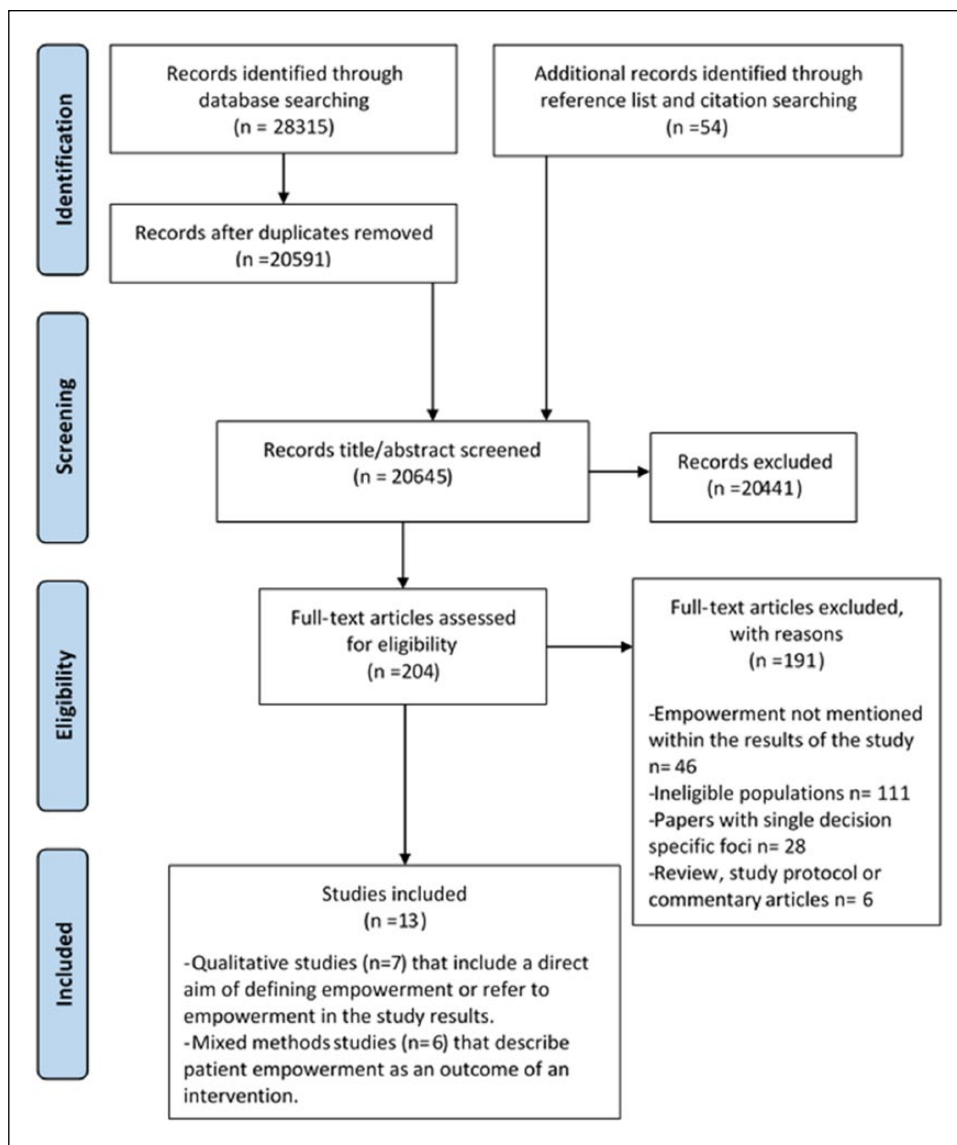


Figure 1. PRISMA flow diagram.

patient's pace, that included the expected symptom trajectory and more generally 'what to expect', was reportedly empowering.<sup>29,30</sup>

Mikkleson et al.<sup>36</sup> report on the benefits of a 'healthy' lifestyle educational intervention, emphasising the continued desire to be 'healthy' and make 'healthy choices' even in the advanced stages of illness, as a mechanism for regaining control, which promoted confidence and coping. The need to personalise and pace these approaches was also reported after patients expressed feelings of guilt when failing to achieve mutually designed 'goals'.<sup>36</sup>

In congruence with the findings from other patient populations, having knowledge and skills encouraged patient participation in self-management, enhancing confidence and renewing a sense of self-responsibility and motivation.<sup>26,29,34,36</sup> In contrast, desire for self-management education was often

tempered by the patient's 'ability' to consider further, inevitable losses. In this patient group, self-management education should be delivered sensitively and in a personalised manner which respects changes in capacities, capabilities and priorities over time.

### *Negotiating personal and healthcare relationships*

Eight studies explored features of personal and healthcare/professional relationships that enabled and sustained a sense of empowerment for patients. The qualities advocated applied to HCPs, families, informal carers, patients and services, with the synergy between these groups integral in the attainment of empowerment. Empowering partnerships were fostered by families and HCPs 'being and

Table 1. Qualitative studies – results.

Author Year Country	Study design and data source informing findings	Participants	Findings relating to the process of becoming empowered	Findings relating to the state of being empowered	Challenges to empowerment. Disempowering processes/ events
Dong et al. <sup>32</sup> 2016 Australia	Semi-structured interviews exploring patients' experiences of having multiple symptoms <sup>a</sup>	58 patients all with advanced metastatic cancer	Continuity and coordination of care <sup>b,c</sup> HCPs communicating with compassion <sup>b</sup> Carers supporting patients psychological state(s) <sup>d</sup>	Preserved dignity <sup>b,e</sup> Preserved autonomy <sup>b,e</sup> Feeling secure and understood <sup>b,e</sup> Accepting terminal diagnosis <sup>e</sup>	Feeling 'abandoned' by HCPs <sup>b</sup>
Etkind et al. <sup>25</sup> 2016 UK	Secondary analysis of 30 qualitative interview transcripts exploring experiences of uncertainty <sup>a</sup>	30 patients All 'advanced' disease (5 cancer and 25 non- cancer)	Improve understanding around uncertainty <sup>b,e</sup> Improved communication around uncertainty <sup>b</sup>		
Harley et al. <sup>26</sup> 2012 UK	Semi-structured interviews exploring and aiming to define chronic cancer <sup>f</sup>	56 patients with advanced cancer	Self-management <sup>b,e</sup>	Retaining and enhancing control <sup>e</sup> (via self- management)	
Olisman et al. <sup>35</sup> 2015 Netherlands	Semi-structured interviews describing the relational ethics of hope based on the perspectives of participants <sup>f</sup>	29 palliative care patients, 19 friends/ family members, and 52 HCPs	Protect hope <sup>b</sup> Appreciating the balance between compassion (suffering and loss of hope) and empowerment (hope and power) <sup>b,e</sup> HCP focus on hope (what still can be done) <sup>e</sup> HCP recognising patients power in spite of severe illness <sup>e</sup>	Hope and power recognised and supported <sup>b</sup>	
Richardson et al. <sup>33</sup> 2010 Australia	Qualitative interviews exploring empowerment and daily decision-making <sup>g,f</sup>	11 Patients receiving palliative care in hospice (10 cancer)	Individual engagement <sup>b</sup> 'Letting go' to enable future care decisions and to allow others to help <sup>b</sup> Accepting terminally <sup>b</sup> Wanting to protect hope <sup>b</sup> Coping with threats/changes to identity including physical appearance/image <sup>b</sup> Need for preservation of routine – ADLs <sup>b,e</sup> Daily involvement in basic and important decisions <sup>b,d,e</sup> Preference for listening/being there versus someone constantly 'doing' <sup>d,e</sup> Need for partnership between patients and HCP <sup>b,e</sup> Intentional efforts to create a more equitable relationship and a living within someone else's world <sup>e</sup> Empathic, listening relations between patients and carers <sup>b,d</sup>	Being valued and respected <sup>b</sup> Retained control (from acceptance/ acknowledgement) <sup>b</sup> Retained autonomy <sup>b</sup> Retained motivation to live (from preservation of ADLs) <sup>b,e</sup>	No control over illness and time linked to progression <sup>c</sup> Burden/worry of being unable to sort affairs <sup>c</sup> Continued losses/forfeitures physical and social <sup>c</sup> Continued threats to hope <sup>c</sup> Feeling 'metaphorically' abandoned <sup>e</sup> Hospitals restricting autonomy <sup>e</sup>

Table 1. (Continued)

Author Year Country	Study design and data source informing findings	Participants	Findings relating to the process of becoming empowered	Findings relating to the state of being empowered	Challenges to empowerment. Disempowering processes/ events
Schulman- Green et al. <sup>30</sup> 2011 USA	Semi-structured interviews describe experiences of self- management in the context of transitions <sup>a</sup>	15 women with metastatic breast cancer	Self-management (including learning new skills) <sup>b,e</sup>	Able to self-manage <sup>e</sup> Able to self-manage during transitions <sup>e</sup>	Difficulty obtaining information <sup>e</sup> Lack of knowledge regarding cancer trajectory <sup>e</sup> Constant transitions in condition status, evolving symptoms <sup>c</sup>
Selman et al. <sup>27</sup> UK, Ireland and USA 2016	Ethnography including semi-structured interviews exploring challenges to and facilitators of empowerment across six hospitals <sup>a</sup>	26 older adults with advanced disease (receiving specialist palliative care) (20 cancer and 6 non- cancer) 32 unpaid caregivers and 33 hospital staff members	Communication: time, listening, role explanations, openness and honesty concerning limitations of care and prognosis <sup>b</sup> Tailoring information and care <sup>b</sup> Preference seeking, exploring patients' own idea of 'autonomy' with regard decision-making <sup>b,e</sup> HCP to avoid abandoning patients with decision-making <sup>b</sup> Continuity of care (avoid abandonment) <sup>c</sup> Relational care (team including patient and family as part of the team) <sup>b,d,e</sup> HCPs with expertise in care for patients with advanced disease <sup>b</sup> Well-resourced hospital <sup>c</sup> Peaceful, attentive environment with privacy <sup>b,c</sup> Dignity-promoting initiatives <sup>b,c</sup> Timely access to specialist palliative care <sup>c</sup> HCPs thinking beyond routines, focusing on quality of life, protecting patient dignity, respecting privacy <sup>b</sup>	Confident to ask for HCPs support/time <sup>d,e</sup> Confidence for inclusion <sup>e</sup> Feeling respected, valued and acknowledged <sup>e</sup> Individualism maintained <sup>e</sup> Informed <sup>e</sup> Comfortable (environment) <sup>c</sup>	Poor communication: too much information too soon, over- emphasis of patient autonomy, deferring to patient to make decisions <sup>b</sup> Fragmented care, inadequate staffing levels and expertise <sup>b,c</sup> Too many staff involved in care of one patient <sup>b</sup> Patients/caregivers not wanting to burden staff <sup>b,d</sup> Hospital is hierarchical, difficult to navigate, encourages compliance, makes patients vulnerable and nervous to communicate needs <sup>b,c</sup> Emphasise hospital discharge protocols and case management procedures <sup>b,c</sup>

ADLs: activities of daily living; HCPs: healthcare professionals; RCT: randomised controlled trial.

<sup>a</sup>Data source informing findings: results.

<sup>b</sup>HCP qualities/capacities.

<sup>c</sup>Environment factors.

<sup>d</sup>Family/significant others qualities/capacities

<sup>e</sup>Patient states/capacities.

<sup>f</sup>Data source informing findings: patient quote/s.



**Table 2.** Mixed methods studies- Results.

Author Year Country	Study design Data source informing findings	Participants	Findings relating to the process of becoming empowered	Findings relating to the state of being empowered
Clayton et al. <sup>31</sup> 2007 Australia	RCT. Exploring whether a question prompt list influences advanced cancer patients'/caregivers' questions and discussion of topics relevant to end-of-life care during palliative care consultations <sup>a,b</sup>	174 terminally ill cancer patients (92 intervention and 82 control)	Question prompt lists, aid/prompt dialogue with HCP enhancing communication <sup>c,d</sup>	Confidence (and engagement) to ask HCPs questions about prognosis/future care <sup>e</sup>
Henrikssen et al. <sup>28</sup> 2014 UK	Mixed methods. Pilot study implementing a Patient Satisfaction Questionnaire (PSQ). In a hospice in-patient setting <sup>b</sup>	17 Hospice patients completed questionnaires. 9 patients and 1 relative completed interviews	Opportunity to express opinions <sup>d</sup> Being involved in care decisions/ experience <sup>d,e</sup>	Being heard <sup>d</sup> Opinions considered meaningful <sup>d</sup> Feeling valued <sup>d,e</sup>
Kane et al. <sup>34</sup> 2018 Ireland	Semi-structured interviews exploring patients' experience of using the Integrated Palliative Care Outcome Scale (IPOS) in heart failure clinics <sup>a</sup>	18 patients all with 'advanced heart failure' and 4 nurses	Validation of symptom experience <sup>c,d,e</sup> Holistic needs assessment supports, vocabulary and therein dialogue with HCPs <sup>c,d,e</sup>	Enhanced feeling of control over illness through taking ownership of symptoms <sup>e</sup> Active (rather than passive) role in health care/ management <sup>e</sup> Confidence <sup>e</sup> Being more actively involved in clinical consultations <sup>d,e</sup>

Table 2. (Continued)

Author Year Country	Study design Data source informing findings	Participants	Findings relating to the process of becoming empowered	Findings relating to the state of being empowered
Maloney et al. <sup>37</sup> 2013 USA	A qualitative descriptive study of participants' perspectives of the intervention ENABLE II (Educate, Nurture, Advise Before Life Ends) <sup>a,b</sup>	53 interview participants All advanced 'palliative' cancer	Support/encouragement to seek help <sup>d</sup> Taking an active role in managing health- related issues <sup>e</sup> Planning for future deteriorations in health <sup>e</sup>	Confident to seeking assistance from HCPs <sup>e</sup> Active (rather than passive) role in health care/ management <sup>e</sup> Active (rather than passive) role in dealing with family and friends <sup>e</sup> Confident to communicate limitations/disability, informing family/HCPs what your able to do <sup>e</sup> Confidence <sup>e</sup> Enhanced feeling of control over illness and treatment <sup>d,e</sup> Enhanced abilities to apply problem-focused coping <sup>d,e</sup> Managing disappointment when failing to achieve goals <sup>e</sup> Enhanced capacity to manage/control symptoms <sup>e</sup>
Mikkelsen et al. <sup>36</sup> 2015 Norway	Semi-structured interviews exploring experience participation in a study focusing on lifestyle interventions <sup>b</sup>	9 'Palliative' cancer patients	Gain knowledge of 'illness' situation <sup>c,d,e</sup> Gain understanding of situation <sup>c,d,e</sup> HCPs providing education and an active learning environment motivates patients & strengthens <sup>d</sup>	Confidence <sup>e</sup> Enhanced feeling of control over illness and treatment <sup>d,e</sup> Enhanced abilities to apply problem-focused coping <sup>d,e</sup> Managing disappointment when failing to achieve goals <sup>e</sup> Enhanced capacity to manage/control symptoms <sup>e</sup>
Reilly et al. <sup>29</sup> 2015 UK	Questionnaire survey to describe patients' experiences of a Breathlessness Support Service that included integrated palliative care <sup>a,b</sup>	25 Patients with advanced disease and refractory breathlessness (6 cancer)	Education: understanding of illness <sup>c,d,e</sup> Education: understanding of symptom trajectory/progression of illness <sup>c,d,e</sup> Skills: managing crises, symptom control <sup>c,d,e</sup> Personalised care plan, with information, formulated by HCPs <sup>c,d</sup>	Confidence <sup>e</sup> Enhanced feeling of control over illness and treatment <sup>d,e</sup> Enhanced abilities to apply problem-focused coping <sup>d,e</sup> Managing disappointment when failing to achieve goals <sup>e</sup> Enhanced capacity to manage/control symptoms <sup>e</sup>

HCPs: healthcare professionals; RCT: randomised controlled trial.

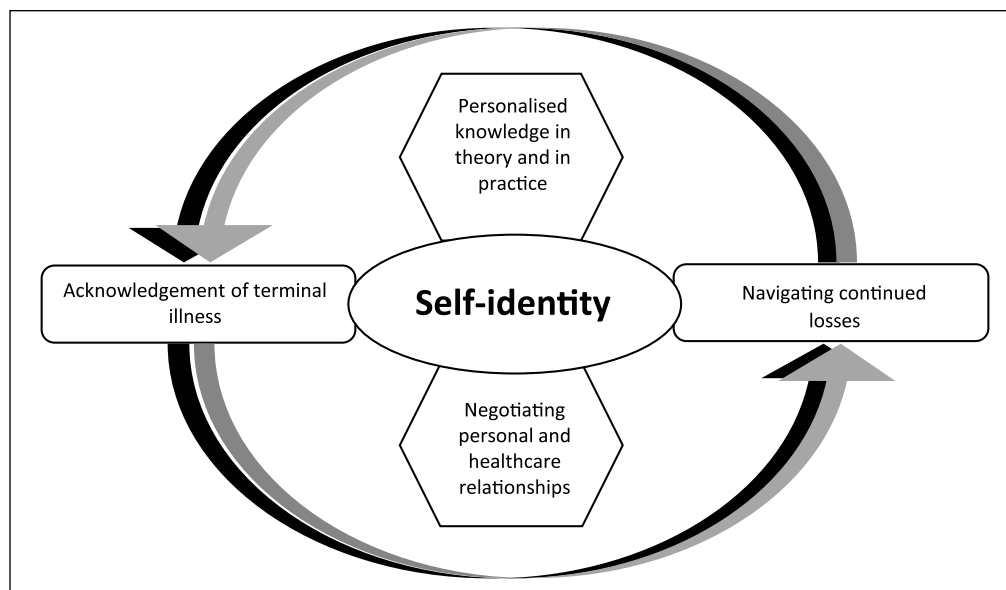
<sup>a</sup>Data source informing findings: intervention outcome.

<sup>b</sup>Data source informing findings: results

<sup>c</sup>Environment factors.

<sup>d</sup>HCP qualities/capacities.

<sup>e</sup>Patient states/capacities.



**Figure 2.** Proposed conceptual model of patient empowerment for adults with advanced life-limiting illness.

listening' rather than 'doing', reinforcing equality, respect and therein the patient's self-identity.<sup>31–33,37</sup> Central to these partnerships was engaging patients in their care rather than resigning them to a passive role in paternalistic, overly nurturing relationships. Owing to the deleterious effects of advancing disability, relationships and roles needed constant re-evaluation. In this context, empowered exchanges involved patients negotiating the offers of support from HCPs or families and protecting the proportion of the proposed activity that can be achieved independently.<sup>33,36</sup>

HCPs needed to communicate in an unrushed, empathic, honest and inclusive fashion,<sup>31,32</sup> tailoring patient-centred decision-making to support the preferences and values of the patient over time. Clinicians over-emphasising patient choice/autonomy in efforts to empower patients (e.g. by 'dumping' information on them rather than collaborating in decision-making), conversely resulted in patients feeling abandoned and disenfranchised.<sup>31</sup> In addition, respecting the preference of some patients to pass on responsibility for decision-making can be an empowering demonstration of wishes for patients.<sup>31</sup>

There is evidence that for some patients, desire for open and honest communication can be restricted by the fear of losing hope, based on either previous experience or an expectation of clinicians censoring hope when communicating with complete honesty in the context of life-limiting illness. This is reflected in the works of Richardson et al.<sup>33</sup> and Olsman et al.<sup>35</sup> where patients describe the desirable ability of HCPs to 'protect hope' to enable patients to retain a degree of positivity for the future in spite of their prognosis.

Possessing the confidence to seek help from others, both family and HCPs, was also a feature of empowerment.<sup>28,31,34,36,37</sup> Obtaining permission to seek the help was intrinsic to this process, three of the included studies described

interventions that supported patients' interaction and discussions with HCPs.<sup>31,34,37</sup>

### *Acknowledgement of terminal illness*

Studies described a point where by patients acknowledged their impending death, inclusive of the stark realities of what that might mean for their physical and mental capacities, in order to regain a sense of control. In this context, control was signified through sorting affairs and making decisions in response to the limitations placed on their life expectancy.<sup>25</sup> Control was also manifested through patient-led 'handing over' of physical tasks to family or HCPs to facilitate the reassignment of energy to alternative tasks/foci.<sup>33</sup> While one study stated that empowerment could not truly be achieved without people acknowledging their mortality and the consequences of progressive disability,<sup>30</sup> others provided examples of patients feeling empowered, having stated their wish to avoid discussions around their mortality and future losses.<sup>33</sup>

### *Navigating continued losses*

Adaptation to, and coping with, continuous physical and social losses was cited as a key feature of becoming and being empowered in five papers. Adaptation was achieved through changing priorities, sorting personal affairs and planning for further deteriorations.<sup>25,27,30</sup> Coping involved refocusing on small daily tasks.<sup>33</sup>

Having hope was central to the patient's capacity for adaptation and coping, with hope a motivating element to 'go on' as losses continued to manifest.<sup>33</sup> The fragility of hope and therein one's ability to cope and continue was recognised as being under continuous threat.<sup>30</sup>

Possessing the skills and capacity to continually adapt, and remain resilient to, loss provided opportunity to achieve or regain a sense of feeling 'in control'.<sup>30</sup> The presence or absence of control thus emerged as a key moderator to being or becoming empowered.

### *Themes within the conceptual model*

'Self-identity', as a central feature of patient empowerment, includes preserving, enhancing and communicating self-identity. It reflects the importance placed on identity for self (the patient), relationships and society. In the theoretical model, each theme has a potentially mutually influential relationship with self-identity.

An example of this is demonstrated by Richardson et al. in their qualitative interview study exploring issues surrounding empowerment and daily decision-making with 11 terminally ill hospice in-patients. Patients associated negotiating offers of care and inclusion in therapeutic relationships with strengthened self-identity; this mitigated the challenges to self-image and self-identity produced by the negative appearance-altering manifestations of their illness.<sup>33</sup>

Olsman et al. investigated the relationship between hope and empowerment through interviews with 29 patients receiving specialist palliative care support. Patients needed HCPs to convey hope of what still can be done. Patients 'having hope' were protective against the reality of terminal illness, including potential functional losses. Retaining hope consequently enhanced capacities to acknowledge and manage transitions in their illness and made patients feel more powerful. This resulted in HCPs 'recognising patients own power, in spite of severe illness'.<sup>35</sup>

'Acknowledgement of terminal illness' and 'Navigating continued losses' themes within the model represents features felt by patients to be inescapable in the advanced stages of life-limiting illness. These, like all the themes identified, were expressed to different degrees within the literature. An example is provided by Olsman et al.<sup>35</sup> when a patient, not wishing to acknowledge her terminal diagnosis with HCPs, communicated this preference to help negotiate these relationships and felt empowered as a result.

'Personalised knowledge in theory and in practice' and 'Negotiating personal and healthcare relationships' include features of empowerment conceptualised as being optional for patients to engage with and, when engaged, open to influence by patients themselves.

## **Discussion**

### *Summary of main findings*

To our knowledge, this is the first review to explore the concept of patient empowerment for adults living with advanced, life-limiting illness. Principally, we have

identified that while there is a paucity of research in this area, the evidence available demonstrates the differences in the factors/themes associated with patient empowerment for adults in the advanced stages of a life-limiting illness in comparison to other patient groups. Key differences relate to the continued physical and psychosocial challenges this group encounter, producing contrasting patient empowerment foci and outcomes.

Distinct for our population of interest is the experience of continued insults and resultant losses that occur within short periods of time. Empowerment, when you are dying, includes the capacity to withstand insults and losses which may compromise, in particular, a patient's self-identity. Protecting self-identity is central to empowerment for this group and represents a key motivator to 'continue living',<sup>33</sup> in comparison to other patient groups, where enhanced or sustained health states are seen as both a motivator and outcome of empowerment.<sup>4,38,39</sup>

From the literature focused on patients with long-term conditions (the group that empowerment strategies have largely evolved to target), a key empowerment outcome is aimed towards enhancing patients 'feelings of control over their illness'.<sup>5,13,15</sup> In contrast, an outcome or focus for empowered patients with terminal illness appears to centre around self-identity, as opposed to control of their illness or health state(s). For example, this review found that patients placed stronger emphasis on the benefits of equitable therapeutic relationships with HCP with respect to self-identity (feeling respected and valued),<sup>27,33,35</sup> rather than focusing on the product of that relationship being to enhance their 'feelings of control over their illness'.

Furthermore, relationships with HCP and families, for this group, evolve more readily owing to persistent losses and often inevitable physical or cognitive dependency. There is a delicate need for shifting responsibilities over time, with points at which the patient 'hands over' increasingly to others. Recognising evolving physical limitations and letting others 'do' can instil a sense of control so long as it is balanced and paced to the patients preference and is not restricted by time-tabled, non-personalised care. This is in contrast to the focus on persistently equal relations and responsibilities for HCP/families and patients in other groups.<sup>4,7,15</sup>

Our review identified just two papers that sought to explore empowerment as a study objective.<sup>27,33</sup> Richardson et al. explored the meaning of empowerment and decision-making from the perspectives of 11 patients in receipt of specialist palliative care support, while Selman et al. studied the challenges to and facilitators of empowerment in an ethnographic study interviewing 26 patients aged  $\geq 65$  years receiving specialist palliative care. Both papers communicate the emphasis placed, by patients, on relationships and services that enable them to attain and retain respect, acknowledgement and inclusion.

We did not identify any papers evaluating interventions designed to empower patients with advanced disease. The

five mixed method studies that evaluated interventions referenced empowerment as an incidental outcome. In contrast, Bravo et al.<sup>4</sup> identified 67 studies with published definitions of patient empowerment for patients with long-term conditions. Barr et al.<sup>5</sup> identified 30 studies on 19 measures of empowerment for a range of patient groups, although none designed specifically for patients with advanced, life-limiting conditions.

### Limitations

The terms ‘patient empowerment’ and ‘patient activation’ largely occur within research and policy in developed, high-income countries and might not translate across all countries and cultures. We retained studies that exclusively included and defined patients as being in the advanced stages of life-limiting illness. Not all papers report the phase/stage of illness of participants, so we might have missed papers that might have contributed to the aims of this study.

### Implications for policy, research and practice

Our review found no evidence of attempts to incorporate patient empowerment into the design or evaluation of services that support people with advanced life-limiting illness. In contrast, there is a significant body of work in this area for patients with long-term conditions and as part of population health-promotion strategies.<sup>12,13,40,41</sup>

We suggest, based on the findings from this review, that current programmes and measures of patient empowerment may not be wholly applicable to patients with advanced, life-limiting disease. First, many of these existing approaches assume a role for prevention of negative health states or promotion of lifestyle measures to benefit health states.<sup>15</sup> Second, there is little research addressing and/or managing the irreversible aspects of health states.<sup>40</sup> Third, there may be additional dimensions and aspects of empowerment in advanced illness, as described in the opening of our discussion. On this basis, we would argue that presently there is no reliable and valid way to assess whether existing services and structures are or are not empowering to patients with advanced, life-limiting disease.

The findings of this review highlight the desire of many patients to remain actively involved in decisions about, and in the practice of, their care. To this effect, we suggest that services should aim to support and promote empowerment. The emerging use of discrete choice experiments in service assessment and design<sup>42,43</sup> may offer a method to maintain patient inclusion and support the generation of services that will benefit patient empowerment in tandem. In addition, interventions shown to empower patients should be incorporated into routine practice; these include interventions that support patient

and HCP dialogue<sup>28,31</sup> and involve personalised lifestyle and self-management advice.<sup>29,36,37</sup>

### Conclusion

This review provides an evidence base and conceptual model to inform future research into patient empowerment for patients with advanced life-limiting illness. Being an ‘empowered patient’, when living with advanced life-limiting illness is different to the experience and meaning of empowerment for other patient groups. ‘Patient empowerment’ emerges as a metaphor for all that enables people to maintain their self-identity until the very end of life.

Considering the benefits of services and programmes designed to empower patients in other groups, further research is needed to ensure end-of-life care is optimally empowering. We would propose that the themes of this review may provide a useful starting point to guide the assessment of existing services and development of a new dialogue surrounding patient participation in the design of services and interventions.

### Acknowledgements

D.W. is the lead of the design and development of the study to include the acquisition, analysis and interpretation of data. Lead author involved in drafting and revising the article and approved the version to be published. F.E.M.M. contributed to the study design, analysis and interpretation of data and critical revision of the article and approved the version to be published. J.B. contributed to analysis and interpretation of data and critical revision of the article and approved the version to be published. L.S., A.M.F. and I.J.H. critically revised the article and approved the version to be published.

### Declaration of conflicting interests

The author(s) declared no potential conflicts of interest with respect to the research, authorship and/or publication of this article.




### Funding

This paper presents independent research part-funded through a National Institute for Health Research (NIHR) Integrated Academic Training Fellowship (DW is an NIHR-funded Academic Clinical Fellow). The views and opinions expressed are those of the authors and do not necessarily reflect those of the National Health Service, the National Institute of Health Research, Medical Research Council, Central Commissioning Facility, NIHR Evaluation, Trials and Studies Coordinating Centre, the National Institute of Health Research Programme Grants for Applied Research, or the Department of Health.

### Research ethics and patient consent

This study uses routinely collected, aggregated and anonymised data that are publicly available, and therefore, no ethical approvals were necessary.

## ORCID iDs

Dominique Wakefield  <https://orcid.org/0000-0001-9800-0436>  
 Lucy Selman  <https://orcid.org/0000-0001-5747-2699>  
 Irene J Higginson  <https://orcid.org/0000-0003-1426-4923>

## References

- World Health Organization (WHO). Global Health Observatory data – life expectancy, [www.who.int/gho/mortality\\_burden\\_disease/life\\_tables/situation\\_trends\\_text/](http://www.who.int/gho/mortality_burden_disease/life_tables/situation_trends_text/) (2017, accessed 20 June 2017).
- Anderson G and Horvath J. The growing burden of chronic disease in America. *Public Health Rep* 2004; 119(3): 263–270.
- World Health Organization (WHO). Global health and aging, [www.who.int/ageing/publications](http://www.who.int/ageing/publications) (2011, accessed 20 June 2017).
- Bravo P, Edwards A, Barr PJ, et al. Conceptualising patient empowerment: a mixed methods study. *BMC Health Serv Res* 2015; 15(1): 252.
- Barr PJ, Scholl I, Bravo P, et al. Assessment of patient empowerment—a systematic review of measures. *PLoS ONE* 2015; 10(5): e0126553.
- Anderson RM and Funnell MM. Patient empowerment: reflections on the challenge of fostering the adoption of a new paradigm. *Patient Educ Couns* 2005; 57(2): 153–157.
- Alexander JA, Hearld LR, Mittler JN, et al. Patient-physician role relationships and patient activation among individuals with chronic illness. *Health Serv Res* 2012; 47(3 Pt 1): 1201–1223.
- Anderson RM, Funnell MM, Fitzgerald JT, et al. The Diabetes Empowerment Scale: a measure of psychosocial self-efficacy. *Diabetes Care* 2000; 23(6): 739–743.
- McCorkle R, Ercolano E, Lazenby M, et al. Self-management: enabling and empowering patients living with cancer as a chronic illness. *CA Cancer J Clin* 2011; 61(1): 50–62.
- Wallerstein N. What is the evidence on effectiveness of empowerment to improve health? Health evidence network report, February 2006, p. 37, [http://www.euro.who.int/\\_\\_data/assets/pdf\\_file/0010/74656/E88086.pdf](http://www.euro.who.int/__data/assets/pdf_file/0010/74656/E88086.pdf)
- Greene J and Hibbard JH. Why does patient activation matter? An examination of the relationships between patient activation and health-related outcomes. *J Gen Intern Med* 2012; 27(5): 520–526.
- NHS England. New care models: empowering patients and communities, [www.england.nhs.uk](http://www.england.nhs.uk) (2015, accessed 24 April 2017).
- EMPATHiE Consortium. EMPATHiE empowering patients in the management of chronic diseases. Report produced under the EU Health Programme, <http://ec.europa.eu/health/sites/health> (2014, accessed 20 June 2017).
- Hibbard JH and Cunningham PJ. How engaged are consumers in their health and health care, and why does it matter. *Res Brief* 2008; 8: 1–9.
- Hibbard J and Gilbert H. Supporting people to manage their health. The Kings Fund, <https://www.kingsfund.org.uk> (2014, accessed 20 June 2017).
- Hibbard JH, Stockard J, Mahoney ER, et al. Development of the Patient Activation Measure (PAM): conceptualizing and measuring activation in patients and consumers. *Health Serv Res* 2004; 39(4): 1005–1026.
- Wakefield D, Bayly J, Selman L, et al. Patient empowerment, what is it and what does it mean for adults in the advanced stages of a life-limiting illness? A systematic review and critical interpretive synthesis of existing evidence to inform palliative care. PROSPERO: International prospective register of systematic reviews (CRD42016046113), 2016, [http://www.crd.york.ac.uk/PROSPERO/display\\_record.asp?ID=CRD42016046113](http://www.crd.york.ac.uk/PROSPERO/display_record.asp?ID=CRD42016046113)
- Dixon-Woods M, Cavers D, Agarwal S, et al. Conducting a critical interpretive synthesis of the literature on access to healthcare by vulnerable groups. *BMC Med Res Methodol* 2006; 6(1): 35.
- Aujoulat I, d'Hoore W and Deccache A. Patient empowerment in theory and practice: polysemy or cacophony? *Patient Educ Couns* 2007; 66(1): 13–20.
- Sladek RM, Tieman J and Currow DC. Improving search filter development: a study of palliative care literature. *BMC Med Inform Decis Mak* 2007; 7(1): 18.
- Brereton L, Clark J, Ingleton C, et al. What do we know about different models of providing palliative care? Findings from a systematic review of reviews. *Palliat Med* 2017; 31: 781–797.
- Luckett T, Phillips J, Agar M, et al. Elements of effective palliative care models: a rapid review. *BMC Health Serv Res* 2014; 14(1): 136.
- Chen J, Mullins CD, Novak P, et al. Personalized strategies to activate and empower patients in health care and reduce health disparities. *Health Educ Behav* 2016; 43(1): 25–34.
- Bulsara C, Styles I, Ward AM, et al. The psychometrics of developing the patient empowerment scale. *J Psychosoc Oncol* 2006; 24(2): 1–16.
- Etkind SN, Bristowe K, Bailey K, et al. How does uncertainty shape patient experience in advanced illness? A secondary analysis of qualitative data. *Palliat Med* 2017; 31(2): 171–180.
- Harley C, Pini S, Bartlett YK, et al. Defining chronic cancer: patient experiences and self-management needs. *BMJ Support Palliat Care* 2015; 5(4): 343–350.
- Selman LE, Daveson BA, Smith M, et al. How empowering is hospital care for older people with advanced disease? Barriers and facilitators from a cross-national ethnography in England, Ireland and the USA. *Age Ageing* 2016; 46(2): 300–309.
- Henriksen KM, Heller N, Finucane AM, et al. Is the patient satisfaction questionnaire an acceptable tool for use in a hospice inpatient setting? A pilot study. *BMC Palliat Care* 2014; 13(1): 27.
- Reilly CC, Bausewein C, Pannell C, et al. Patients' experiences of a new integrated breathlessness support service for patients with refractory breathlessness: results of a postal survey. *Palliat Med* 2016; 30(3): 313–322.
- Schulman-Green D, Bradley EH, Knobf MT, et al. Self-management and transitions in women with advanced breast cancer. *J Pain Symptom Manage* 2011; 42(4): 517–525.
- Clayton JM, Butow PN, Tattersall MH, et al. Randomized controlled trial of a prompt list to help advanced cancer patients and their caregivers to ask questions about prognosis and end-of-life care. *J Clin Oncol* 2007; 25(6): 715–723.

32. Dong ST, Butow PN, Tong A, et al. Patients' experiences and perspectives of multiple concurrent symptoms in advanced cancer: a semi-structured interview study. *Support Care Cancer* 2016; 24(3): 1373–1386.
33. Richardson K, MacLeod R and Kent B. Ever decreasing circles: terminal illness, empowerment and decision-making. *J Prim Health Care* 2010; 2(2): 130–135.
34. Kane PM, Ellis-Smith CI, Daveson BA, et al. Understanding how a palliative-specific patient-reported outcome intervention works to facilitate patient-centred care in advanced heart failure: a qualitative study. *Palliat Med* 2017; 32(1): 143–155.
35. Olsman E, Willems D and Leget C. Solitude: balancing compassion and empowerment in a relational ethics of hope – an empirical-ethical study in palliative care. *Med Health Care Philos* 2016; 19: 11–20.
36. Mikkelsen HE, Brovold KV, Berntsen S, et al. Palliative cancer patients' experiences of participating in a lifestyle intervention study while receiving chemotherapy. *Cancer Nurs* 2015; 38(6): E52–E18.
37. Maloney C, Lyons KD, Li Z, et al. Patient perspectives on participation in the ENABLE II randomized controlled trial of a concurrent oncology palliative care intervention: benefits and burdens. *Palliat Med* 2013; 27(4): 375–383.
38. Chatzimarkakis J. Why patients should be more empowered: a European perspective on lessons learned in the management of diabetes. *J Diabetes Sci Technol* 2010; 4(6): 1570–1573.
39. Bann CM, Sirois FM and Walsh EG. Provider support in complementary and alternative medicine: exploring the role of patient empowerment. *J Altern Complement Med* 2010; 16(7): 745–752.
40. Segal L. The importance of patient empowerment in health system reform. *Health Policy* 1998; 44(1): 31–44.
41. Wong CK, Wong WC, Lam CL, et al. Effects of Patient Empowerment Programme (PEP) on clinical outcomes and health service utilization in type 2 diabetes mellitus in primary care: an observational matched cohort study. *PLoS ONE* 2014; 9(5): e95328.
42. Douglas HR, Normand CE, Higginson IJ, et al. A new approach to eliciting patients' preferences for palliative day care: the choice experiment method. *J Pain Symptom Manage* 2005; 29(5): 435–445.
43. Hall J, Kenny P, Hossain I, et al. Providing informal care in terminal illness: an analysis of preferences for support using a discrete choice experiment. *Med Decis Making* 2014; 34(6): 731–745.

## Appendix I

### 1. Database search details and search terms used for review

MEDLINE via Ovid (Inception to week 2 March 2018)  
 EMBASE via Ovid (Inception to week 2 March 2018)  
 CINAHL via EBSCOhost (Inception to week 2 March 2018)  
 PsycINFO via Ovid (Inception to week 2 March 2018)  
 Cochrane Database of Systematic Reviews (Inception to week 2 March 2018)

### 2. Medline (OVID) search strategy

	Search terms
1	*Patient Participation/
2	*Self Care/
3	empowerment.mp. [mp=title, abstract, heading word, drug trade name, original title, device manufacturer, drug manufacturer, device trade name, keyword]
4	*Self Efficacy/
5	mastery.mp. [mp=title, abstract, heading word, drug trade name, original title, device manufacturer, drug manufacturer, device trade name, keyword]
6	*Self-Control/
7	control.mp. [mp=title, abstract, heading word, drug trade name, original title, device manufacturer, drug manufacturer, device trade name, keyword]
8	*Self Concept/
9	*Internal-External Control/
10	confidence.mp. [mp=title, abstract, heading word, drug trade name, original title, device manufacturer, drug manufacturer, device trade name, keyword]
11	*Decision-Making/
12	*Attitude to Health/
13	*Motivation/
14	1 or 2 or 3 or 4 or 5 or 6 or 7 or 8 or 9 or 10 or 11 or 12 or 13
15	end-of-life*.mp. [mp=title, abstract, heading word, drug trade name, original title, device manufacturer, drug manufacturer, device trade name, keyword]

Search terms	
16	(advanced adj3 (disease or condition or illness)).mp. [mp = title, abstract, heading word, drug trade name, original title, device manufacturer, drug manufacturer, device trade name, keyword]
17	(progressive adj3 (disease or condition or illness)).mp. [mp = title, abstract, heading word, drug trade name, original title, device manufacturer, drug manufacturer, device trade name, keyword]
18	palliat\$.tw.
19	hospice\$.tw.
20	*Palliative Care/
21	*Terminal Care/
22	*Terminally Ill/
23	*Hospices/
24	terminal-care.tw.
25	(activat* or participat* or empower* or engag* or decision* or self* or confiden* or master* or belie*).mp. [mp = title, abstract, heading word, drug trade name, original title, device manufacturer, drug manufacturer, device trade name, keyword]
26	*Death/
27	*Bereavement/
28	15 or 16 or 17 or 18 or 19 or 20 or 21 or 22 or 23 or 24 or 26 or 27
29	14 and 28
30	25 and 29

### 3. Search terms by database

#### Search terms – Medline (OVID)

##### \*MeSH heading

.mp. = title, abstract, heading word, drug trade name, original title, device manufacturer, drug manufacturer, device trade name, keyword]

*Patient Participation	*Palliative Care
*Self Care	*Terminal Care
*Self Efficacy	*Terminally Ill
*Self-Control	*Hospices
*Self Concept	*Death
*Internal-External Control	*Bereavement
*Decision-Making	end-of-life*.mp.
*Attitude to Health	(advanced adj3 (disease or condition or illness)).mp.
*Motivation	(progressive adj3 (disease or condition or illness)).mp.
empowerment.mp.	(activat* or participat* or empower* or engag* or decision* or self* or confiden* or master* or belie*).mp.
mastery.mp.	terminal-care.tw.
control.mp.	palliat\$.tw.
confidence.mp.	hospice\$.tw.

#### Search terms – Embase(OVID)

##### \*MeSH heading

.mp. = title, abstract, heading word, drug trade name, original title, device manufacturer, drug manufacturer, device trade name, keyword]

*Patient Participation	*Palliative Care
*Self Care	*Terminal Care
*Self Efficacy	*Terminally Ill Patients
*Self-Control	*HOSPICE
*Self Concept	*'death and dying'
*Internal External Locus of Control	*Bereavement
*Decision-Making	end-of-life*.mp.
*Health Attitudes	(advanced adj3 (disease or condition or illness)).mp.
*Motivation	(progressive adj3 (disease or condition or illness)).mp.
empowerment.mp.	(activat* or participat* or empower* or engag* or decision* or self* or confiden* or master* or belie*).mp.
mastery.mp.	terminal-care.tw.
control.mp.	palliat\$.tw.
confidence.mp.	hospice\$.tw.

(Continued)



**Search terms – PsycINFO (OVID)**

\*MeSH heading

.mp=title, abstract, heading word, drug trade name, original title, device manufacturer, drug manufacturer, device trade name, keyword]

*Patient Participation	*palliative therapy
*Self Care	*Terminal Care
*Self-Control	*terminally ill patient
*Self Concept	*Hospices
*Control	*Death
*Decision-Making	*Bereavement
*Attitude to Health	end-of-life*.mp.
*Motivation	(advanced adj3 (disease or condition or illness)).mp.
empowerment.mp.	(progressive adj3 (disease or condition or illness)).mp.
mastery.mp.	(activat* or participat* or empower* or engag* or decision* or self* or confiden* or master* or belie*).mp.
control.mp.	terminal-care.tw.
confidence.mp.	palliat\$.tw.
	hospice\$.tw.

**Search terms – CINAHL (EBSCO)**MM – Searches the exact *CINAHL*® subject heading; searches just for major headings,MW – Searches for a word in the *CINAHL*® subject heading, including subheadings, retrieves citations indexed under major or minor.

Article Title (TI), Abstract (AB), Within three words of (n3)

'patient participation'	(MM 'Palliative Care')
(MM 'Self Care')	(MM 'Terminal Care')
(MM 'Self-Efficacy')	(MM 'Terminally Ill Patients')
(MM 'self control')	(MM 'Hospices')
(MM 'Self Concept')	(MM 'Death')
(MM 'Locus of Control')	*Bereavement/
(MM 'Decision Making, Patient')	'end of life*'
(MM 'Attitude to Health')	TI ( ((advanced) n3 (disease* or condition* or illness*))) OR AB ( ((advanced) n3 (disease* or condition* or illness*)))
(MM 'Motivation')	TI ( ((progressive) n3 (disease* or condition* or illness*))) OR AB ( ((progressive) n3 (disease* or condition* or illness*)))
(MM 'Attitude to Illness')	TI ( (activat* or participat* or empower* or engag* or decision* or self* or confiden* or master* or belie*)) OR AB ( (activat* or participat* or empower* or engag* or decision* or self* or confiden* or master* or belie*)) OR MW ( (activat* or participat* or empower* or engag* or decision* or self* or confiden* or master* or belie*))
(MM 'Empowerment')	TI ( (activat* or participat* or empower* or engag* or decision* or self* or confiden* or master* or belie*)) OR AB ( (activat* or participat* or empower* or engag* or decision* or self* or confiden* or master* or belie*)) OR MW ( (activat* or participat* or empower* or engag* or decision* or self* or confiden* or master* or belie*))
(MM 'mastery')	TI ( (activat* or participat* or empower* or engag* or decision* or self* or confiden* or master* or belie*)) OR AB ( (activat* or participat* or empower* or engag* or decision* or self* or confiden* or master* or belie*)) OR MW ( (activat* or participat* or empower* or engag* or decision* or self* or confiden* or master* or belie*))
(MM 'Confidence')	TI ( (activat* or participat* or empower* or engag* or decision* or self* or confiden* or master* or belie*)) OR AB ( (activat* or participat* or empower* or engag* or decision* or self* or confiden* or master* or belie*)) OR MW ( (activat* or participat* or empower* or engag* or decision* or self* or confiden* or master* or belie*))
	""terminal-care""
	'palliat*'
	'hospice*'

## Appendix 2

**Table 3.** Study findings related to empowerment mapped to themes.

Self-identity	Personalised knowledge in theory and in practice	Acknowledgement of terminal illness	Negotiating personal and healthcare relationships	Navigating continued losses
Preserved dignity <sup>32</sup> Feeling respected <sup>35</sup> Privacy <sup>27</sup> Desire for respect, being valued, acknowledged <sup>27</sup> Being valued and respected <sup>33</sup> Preserve autonomy <sup>33</sup> Feeling valued 'useful' <sup>36</sup> Confidence <sup>36</sup> Managing planned activities <sup>36</sup> Ability to perform & maintain personal care <sup>33</sup> Need for preservation of routine ADLs > to keep motivation to live <sup>33</sup> Individual engagement <sup>33</sup> Confidence <sup>34</sup> Daily involvement in basic and important decisions <sup>33</sup> Opinions being valued <sup>28</sup> Self-Control <sup>26</sup> Preserved autonomy <sup>32</sup>	Validation of symptom experience <sup>34</sup> Enhanced feeling of control over illness through taking ownership of symptoms <sup>34</sup> Health 'situation'-knowledge <sup>36</sup> Health 'situation'-understanding <sup>36</sup> Self-management promoting a sense of 'control' <sup>26</sup> Self-management <sup>30</sup> 'Healthy' Lifestyle education > control, confidence, coping <sup>36</sup> Self-management (obtaining knowledge and skills) <sup>30</sup> Understanding of illness <sup>29</sup> Understanding of symptom trajectory <sup>29</sup> Illness education <sup>29</sup> Balance of goal setting being motivating-confidence, coping-when achieved but equally <sup>36</sup> Guilt on failing to reach goals and a loss of motivation <sup>36</sup>	Accepting the need for assistance/help <sup>33</sup> Acknowledge disease progression > control to sort affairs <sup>33</sup> Acknowledge and Accept lack of control over course of illness > control and autonomy <sup>33</sup> Acknowledge uncertainty <sup>26</sup> Accepting terminal diagnosis <sup>32</sup> Address and Sort affairs <sup>26</sup> Planning for future deteriorations in health <sup>36</sup>	Continuity and coordination of care <sup>32</sup> HCPs communicating with compassion <sup>32</sup> Carers supporting patients psychological state(s) <sup>32</sup> HCPs protecting hope <sup>35</sup> Need for partnerships with HCPs <sup>33</sup> Empathic, active listening relationships <sup>33</sup> Preference for listening/being vs people 'doing' <sup>33</sup> Feeling supported <sup>33</sup> HCPs to avoid abandoning patients with decision-making <sup>27</sup> Opportunity to discuss preferences <sup>27</sup> Exploring patient's own idea of 'autonomy' <sup>27</sup> Unrushed communication with HCPs <sup>27</sup> Obtain preferences for decision-making <sup>27</sup> Confidence for inclusion <sup>27</sup> Confident to ask for support and time from HCPs <sup>30</sup> Honest communication with HCPs <sup>27</sup> Holistic needs assessment supports, vocabulary and therein dialogue with HCPs <sup>34</sup> Question prompt lists aid and/or prompts dialogue <sup>30</sup> Being involved in care decisions/experience <sup>28</sup> Feeling secure and understood <sup>32</sup> Being heard <sup>28</sup> Express opinions <sup>28</sup> Confidence to ask HCPs about prognosis/future care <sup>30</sup> Confidence to seeking assistance from HCPs <sup>31</sup> Support/encouragement to seek help <sup>31</sup> Discussions, rather than 'consultations' <sup>30</sup> Being confident to express limitations/disability <sup>35</sup>	Hope as a motivator, to 'go on'/stay alive <sup>33</sup> Accept uncertainty <sup>25</sup> Coping <sup>36</sup> Changing priorities <sup>33</sup> Resilience to/coping with threats to hope <sup>33</sup> Adaptation to continued losses/forfeitures physical and social <sup>33</sup> Adapting to physical/self-image changes <sup>33</sup> Power to manage losses – regaining internal control <sup>33</sup> Taking an active role in health-related issues – planning for future deteriorations in health <sup>36</sup> Coping with the impacts of shrinking body/bodily functions on identity <sup>33</sup> Hope <sup>35</sup> Power <sup>35</sup> Active (rather than passive) role in health care/management <sup>34</sup>

ADLs: activities of daily living; HCPs: healthcare professionals.