



Travis, R. C., Martin, R., & Donovan, J. (2018). A collaborative analysis of individual participant data from 19 prospective studies assesses circulating vitamin D and prostate cancer risk. *Cancer Research*. Advance online publication. <https://doi.org/10.1158/0008-5472.CAN-18-2318>

Peer reviewed version

Link to published version (if available):
[10.1158/0008-5472.CAN-18-2318](https://doi.org/10.1158/0008-5472.CAN-18-2318)

[Link to publication record in Explore Bristol Research](#)
PDF-document

This is the author accepted manuscript (AAM). The final published version (version of record) is available online via AACR at <http://cancerres.aacrjournals.org/content/early/2018/11/13/0008-5472.CAN-18-2318.long> . Please refer to any applicable terms of use of the publisher.

University of Bristol - Explore Bristol Research

General rights

This document is made available in accordance with publisher policies. Please cite only the published version using the reference above. Full terms of use are available: <http://www.bristol.ac.uk/red/research-policy/pure/user-guides/ebr-terms/>

Figure 1

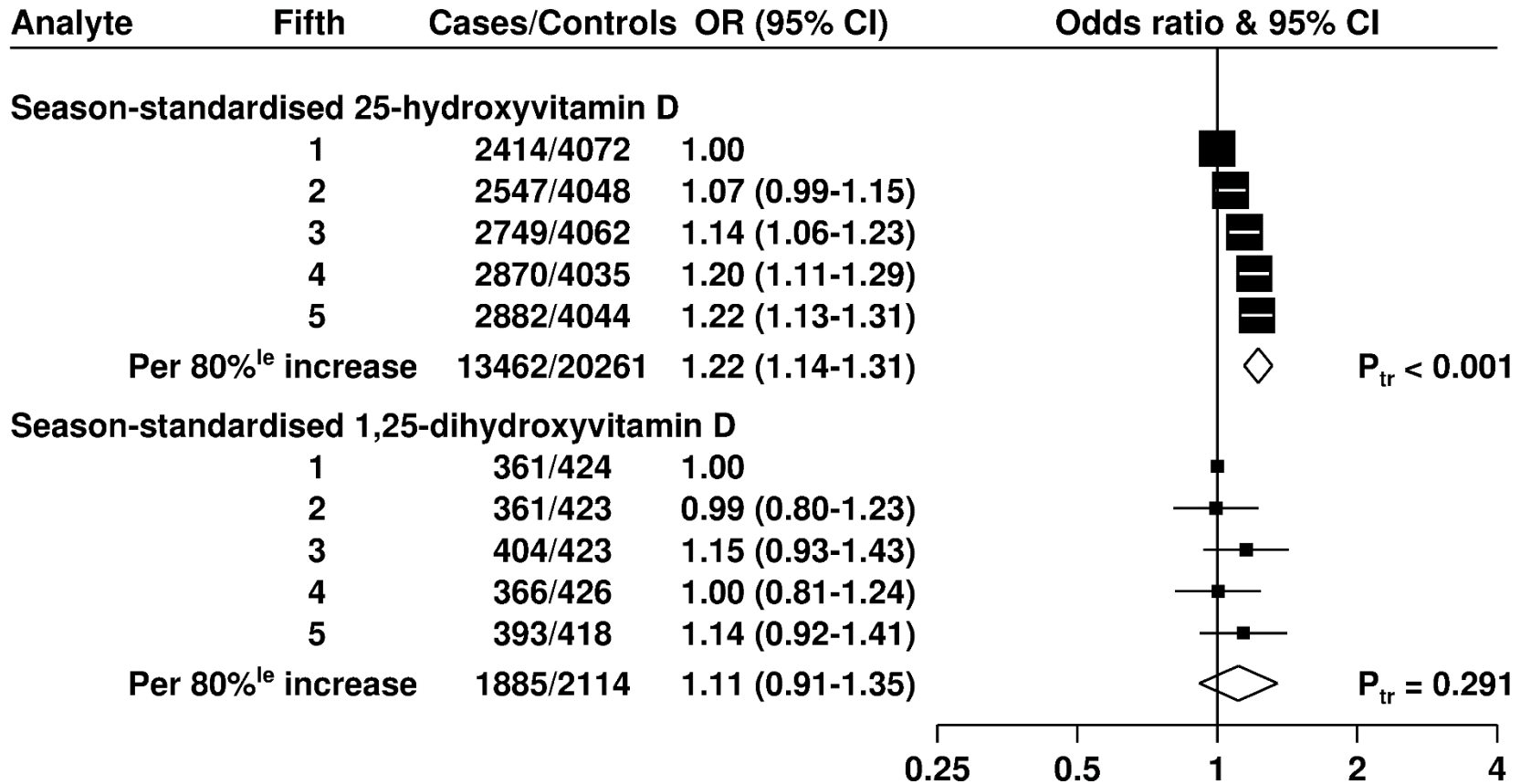
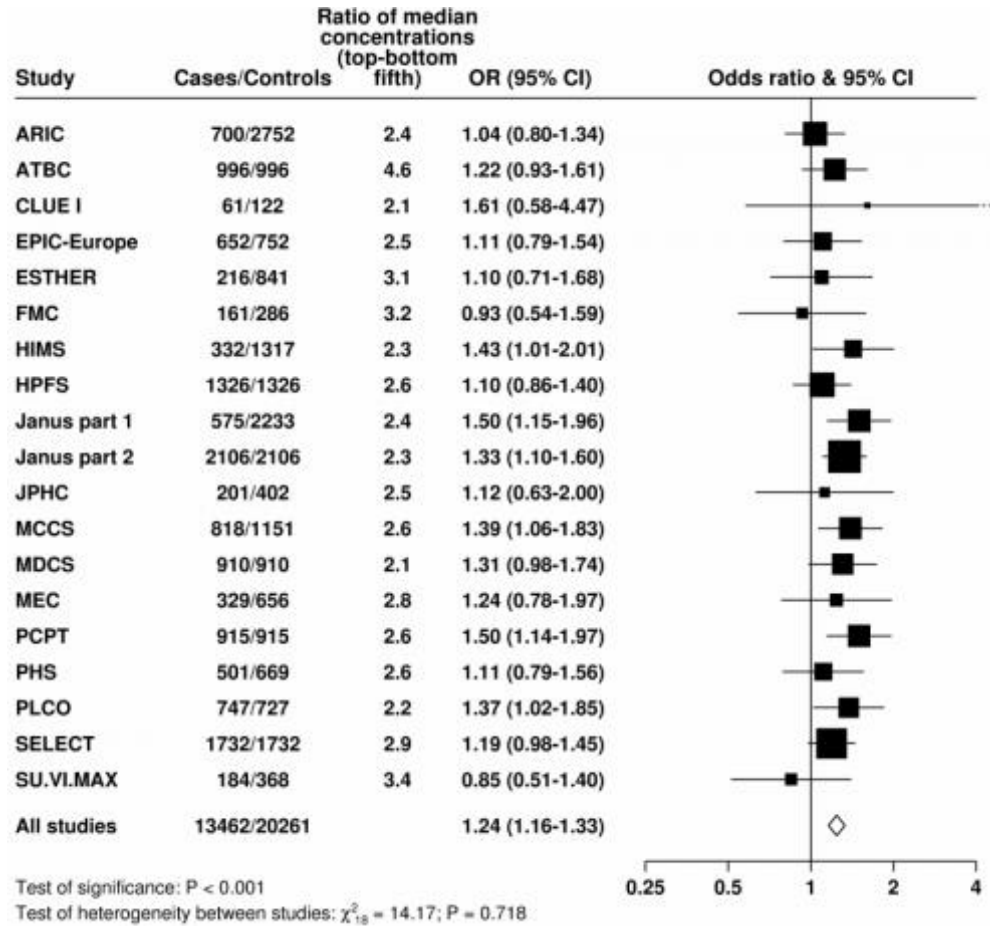


Figure 2

A



B

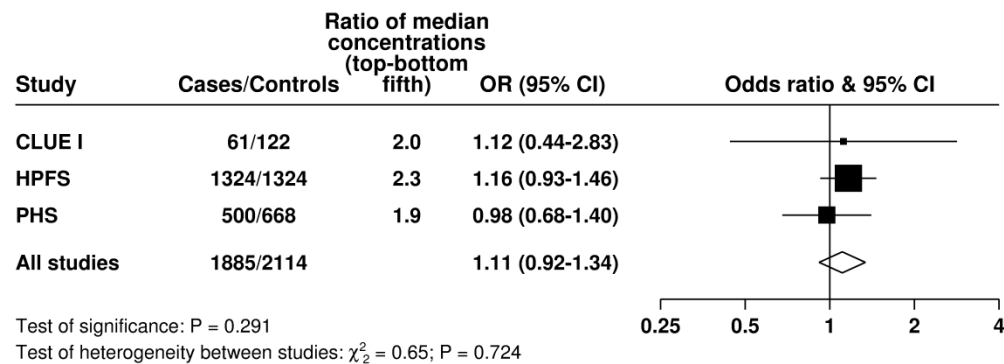


Figure 3

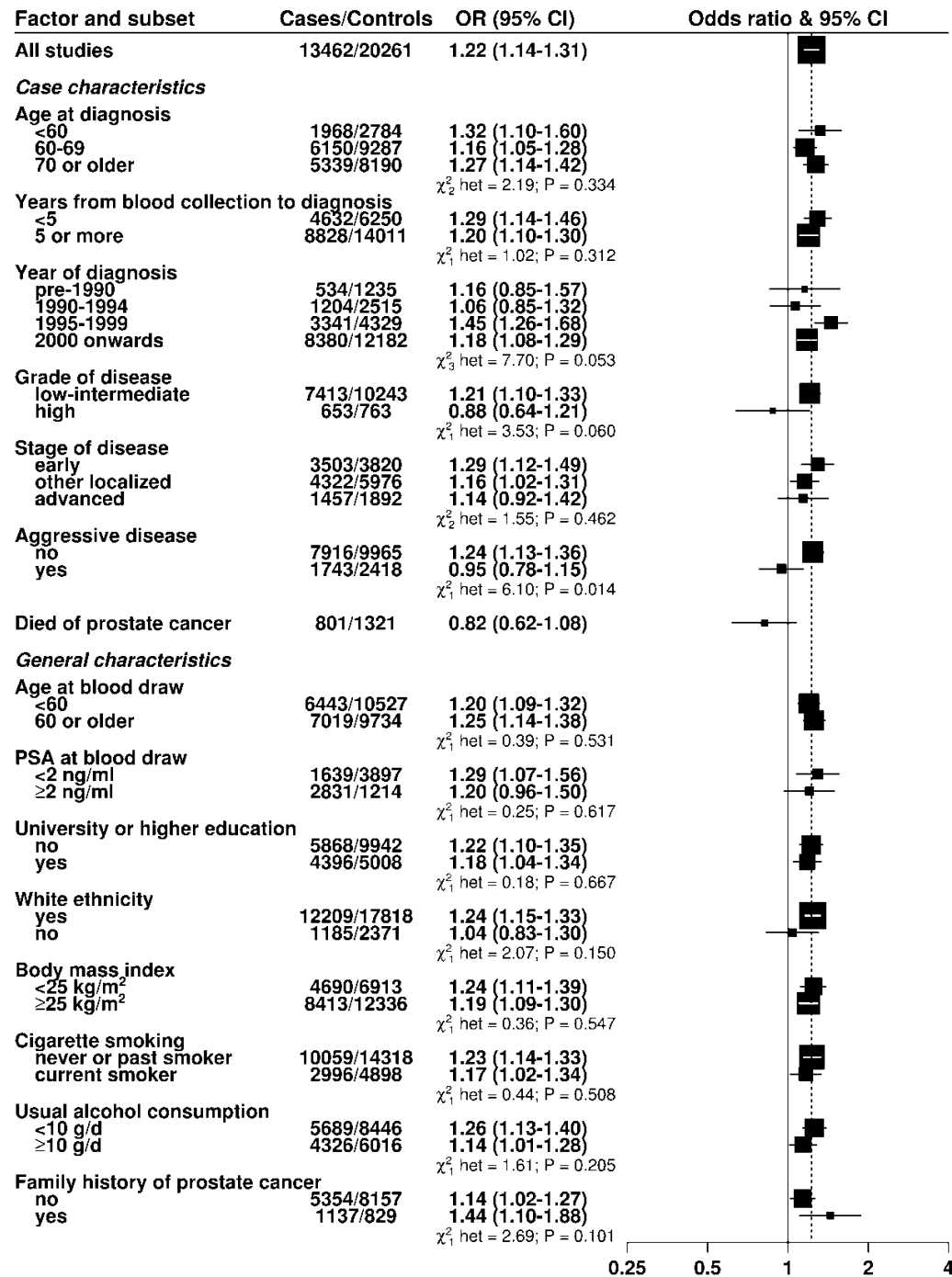
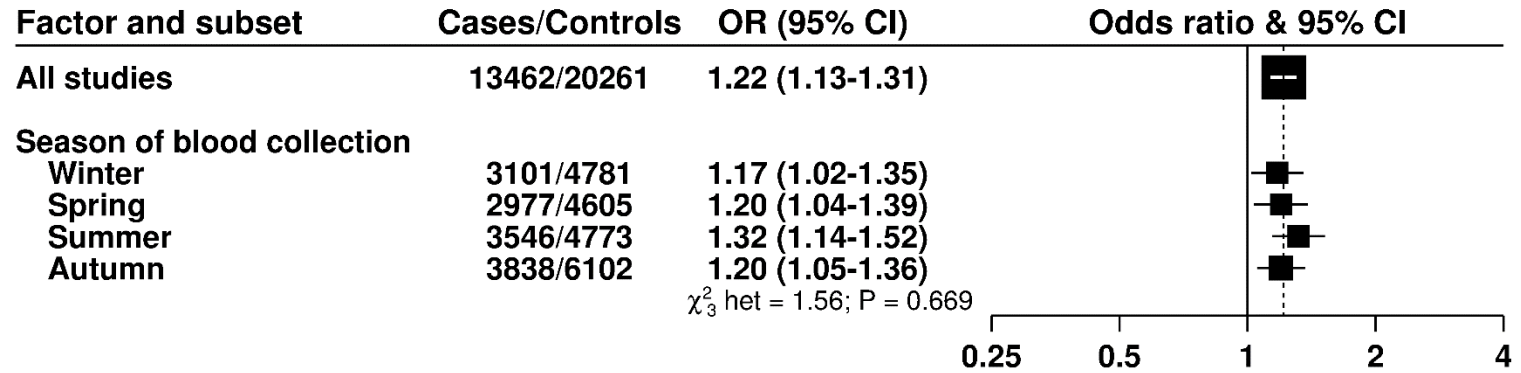


Figure 4

A



B

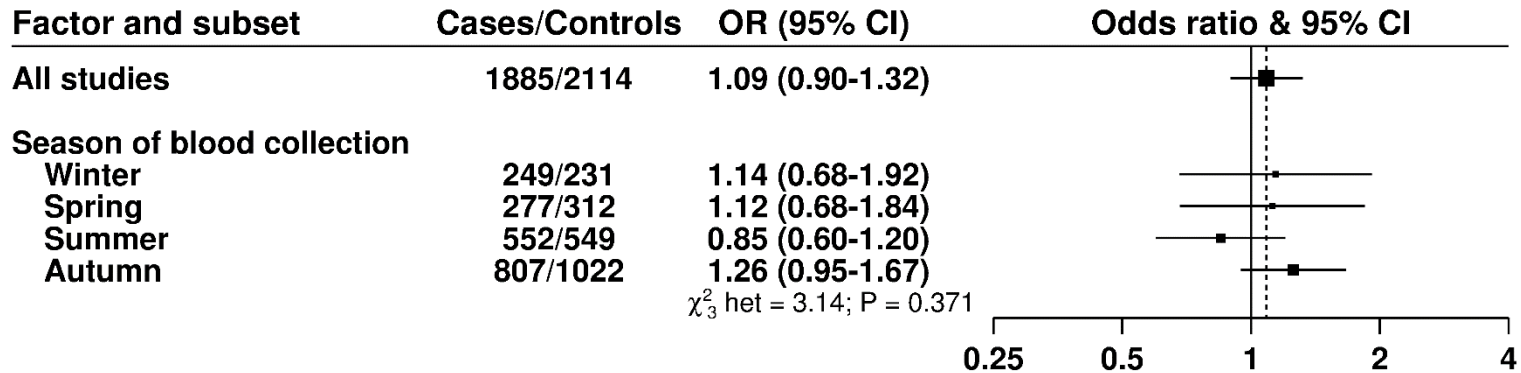
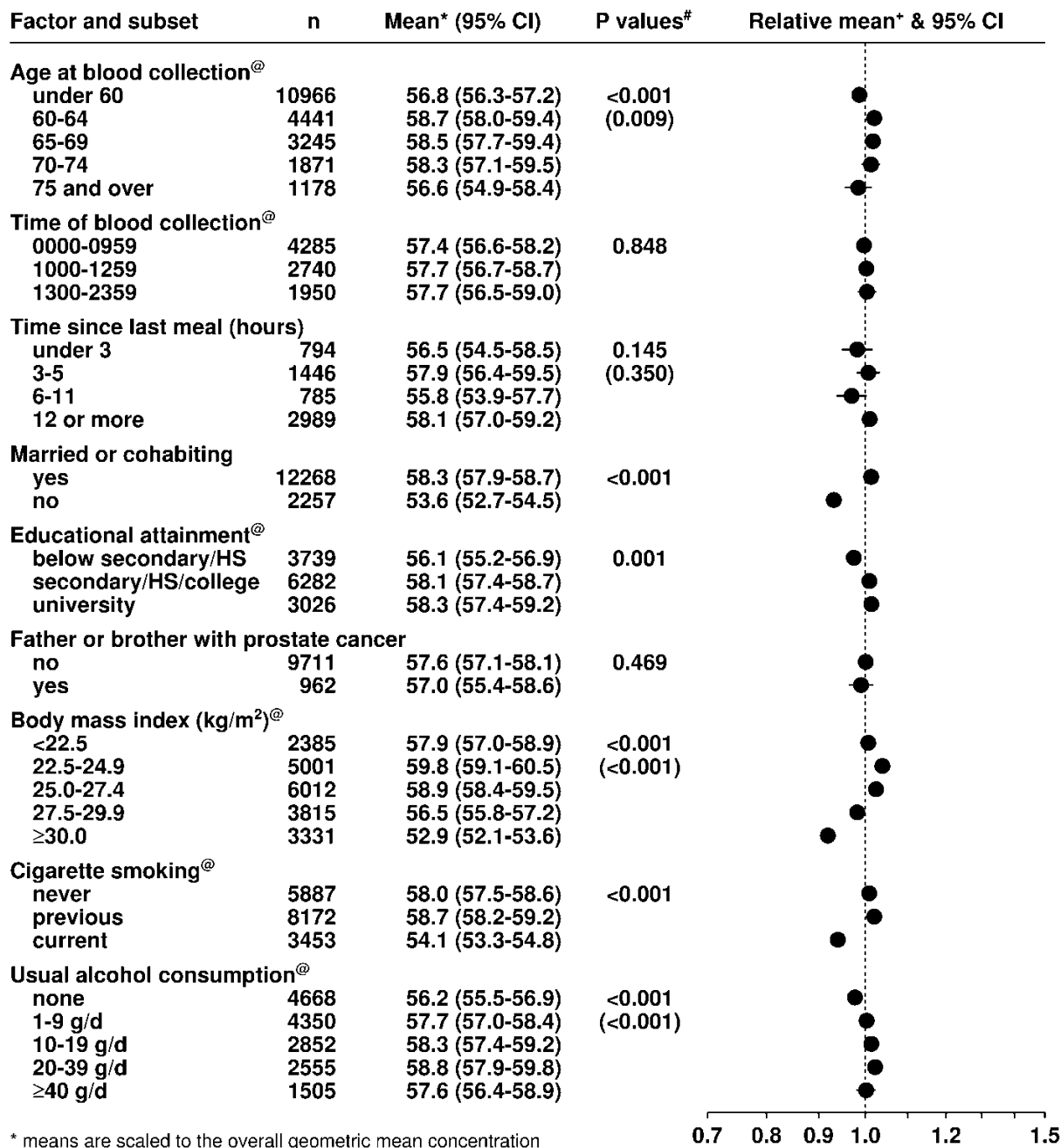


Figure 5



* means are scaled to the overall geometric mean concentration

P values for tests of heterogeneity and, where applicable and in parenthesis, trend

* values are depicted as a proportion of the overall geometric mean concentration (dotted line)

@ P<0.05 for test of interaction with study