



Nandra, R., Matharu, G., Stevenson, J., Parry, M., Grimer, R., & Jeys, L. (2019). Long-term outcomes after an initial experience of computer-navigated resection of primary pelvic and sacral bone tumours: soft-tissue margins must be adequate to reduce local recurrences. *Bone and Joint Journal*, 101-B(4), 484-490. <https://doi.org/10.1302/0301-620X.101B4.BJJ-2018-0981.R1>

Peer reviewed version

Link to published version (if available):  
[10.1302/0301-620X.101B4.BJJ-2018-0981.R1](https://doi.org/10.1302/0301-620X.101B4.BJJ-2018-0981.R1)

[Link to publication record in Explore Bristol Research](#)  
PDF-document

This is the author accepted manuscript (AAM). The final published version (version of record) is available online via Bone and Joint Publishing at <https://online.boneandjoint.org.uk/doi/full/10.1302/0301-620X.101B4.BJJ-2018-0981.R1>. Please refer to any applicable terms of use of the publisher.

## University of Bristol - Explore Bristol Research

### General rights

This document is made available in accordance with publisher policies. Please cite only the published version using the reference above. Full terms of use are available: <http://www.bristol.ac.uk/red/research-policy/pure/user-guides/ebr-terms/>



**Long-term outcomes of initial experience of computer navigated pelvic and sacral primary bone tumour resections: soft-tissue margins must be adequate to reduce local recurrences.**

Journal:	<i>The Bone &amp; Joint Journal</i>
Manuscript ID	BJJ-2018-0981.R1
Manuscript Type:	Original Article
Keywords:	Pelvic sarcoma, Computer assisted navigation, Local recurrence, Soft-tissue margins

SCHOLARONE™  
Manuscripts

1  
2  
3  
4 Long-term outcomes of initial  
5 experience of computer navigated  
6 pelvic and sacral primary bone  
7 tumour resections: soft-tissue  
8 margins must be adequate to reduce  
9 local recurrences.  
10  
11  
12  
13  
14  
15  
16  
17  
18  
19  
20  
21  
22  
23  
24  
25  
26  
27  
28  
29  
30  
31  
32  
33  
34  
35  
36  
37  
38  
39  
40  
41  
42  
43  
44

45 We declare no conflict of interest

46  
47 No funding was received.  
48  
49

50  
51  
52 Word count: 2775  
53  
54  
55  
56  
57  
58  
59  
60

## Abstract

### Background.

~~Pelvic tumours are difficult to treat, with large size at presentation, close proximity of viscera and neurovascular structures and a lack of neoadjuvant therapy.~~ Short-term outcomes using navigated surgery reduced surgical time, blood loss, intralesional resection rate and preserved function.

### Aims

We investigated the local recurrence rate at extended follow-up in patients following navigated resection of primary pelvic and sacral tumours.

### Methods

This prospective cohort study comprised 23 consecutive patients between 2010 and 2012 undergoing primary pelvic and sacral tumour resection using computer navigation. Local recurrence (LR) and mortality rates were calculated using the Kaplan-Meier method.

### Results

Bone resection margins were all clear, with no bony recurrence. At a median follow-up of 6.0 years, eight patients (34.8%) developed soft-tissue LR with an overall cumulative LR rate at 6-years of 35.1% (95% CI=19.3-58.1%). Overall cumulative all-cause mortality rate at 6-years was 26.1% (95% CI = 12.7%-49.1%).

### Conclusion

Despite the positive early experience with computer navigation-assisted resection LR rates remain high. With increasing knowledge of the size of soft tissue margins required to reduce LR and the close proximity of native structures in the pelvis, we advise against compromising resection to preserve function and encourage surgeons to reduce LR by prioritising wide tumour resection margins. Computer navigation remains a useful tool to aid pelvic tumour resection, but adequate soft tissue margins remain essential.

## Introduction

The oncological outcomes of patients with primary tumours located in the pelvis or sacrum are worse than tumours originating at the extremities (31% vs. 51% 10-year overall patient survival)<sup>1</sup>. In the pelvis, tumour size is larger at presentation and the close proximity of visceral and neurovascular structures makes it difficult to achieve adequate surgical clearance<sup>2,3</sup>. Half of patients experience surgical complications<sup>2</sup>. Furthermore, we lack neo-adjuvantive chemoradiotherapy to downstage tumours or treat marginal resections in chondrosarcoma and chordoma, which are the predominant tumour histiotypes in the pelvis. Han et al, 2010 reported a mean 5-year recurrence-free survival rate of 45% for primary pelvic sarcomas<sup>2</sup>, with local recurrence rates for sacral chordoma reported to be as high as 65% at 5-years<sup>4</sup>. Chondrosarcoma has a local recurrence rate of 38%, such recurrence being associated with higher histological grades<sup>5</sup>. Oncological outcomes of pelvic osteosarcoma, chondrosarcoma and sacral chordoma can therefore be improved<sup>4,6,7</sup>.

Computer navigated surgery was introduced to improve the precision of bone resection and achieve clear margins whilst minimising the loss of disease-free tissue<sup>8</sup>. Salvage of disease-free tissue favours reconstruction, limb salvage and preserves patient function<sup>9,10</sup>.

We have previously reported our initial experience with computer navigated resection of pelvic and sacral tumours. The technique was safe and effective in reducing intralesional resections (8.7%) compared to non-navigated resections (27%)<sup>11</sup>. We also noted reduced blood loss, surgical time and universally clear bone resection margins. A number of studies have since published comparable results using navigation for these tumours<sup>12-17</sup>. Despite this increasing body of evidence, it is unclear what the local recurrence rate with longer-term follow-up will be. Therefore, we lack evidence to support any benefit of navigation over traditional surgical techniques when managing these difficult tumours. This is important, as navigation does not guide soft tissue resection, where margins are most commonly compromised during surgery<sup>18,19</sup>. Compromised resection

1  
2  
3 margins are a poor independent prognostic factor for most histological tumour  
4 types<sup>20</sup>.

5  
6 In 2012 the senior authors published data on 539 patients with primary pelvic  
7 bone tumours treated at the same institution without navigation. The 10 year  
8 mortality rate was 31%<sup>1</sup>. Rates of wide surgical margins were lower in pelvic  
9 compared to extremity tumours, with a local recurrence rate of 27%<sup>1</sup>.

### 15 Aim

16 We investigated the outcomes at extended follow-up in 23 patients who had  
17 undergone computer navigated surgical resections for primary pelvic and sacral  
18 tumours. The primary outcome of interest was the rate of local disease  
19 recurrence. Secondary outcomes included the rates of further surgery and all-  
20 cause mortality.  
21  
22  
23  
24  
25  
26  
27

### 28 Patients and Methods

29 This was a study of patients who underwent computer navigated limb salvage  
30 surgery for primary tumours of the pelvis or sacrum at a single specialist  
31 musculoskeletal oncology centre between April 2010 and 2012. Navigation was  
32 deemed appropriate in these patients because of the complex anatomy of the  
33 tumour and/or the perceived difficulty of achieving an adequate resection  
34 margin and accurate positioning of the implant using standard surgical methods.  
35 Patients who required hindquarter amputation or an uncomplicated distal  
36 sacrectomy underwent surgery without the use of navigation.  
37  
38  
39  
40  
41  
42  
43  
44

45 CT and MRI images were fused by an oncology-specific navigation system  
46 (Stryker Orthomap 3D Navigation System II; Stryker, Kalamazoo, Michigan).  
47 These fused images provided an accurate pre-operative three-dimensional (3D)  
48 model of the tumour, which was correlated with the patient's anatomy at the  
49 time of surgery. The surgeon was then able to use these images to plan the plane  
50 of the surgical resection margins in the workstation before undertaking the  
51 procedure. Navigated surgery enabled sacral nerve root preservation (n=10),  
52 limb salvage (n=4) and also permitted reconstruction rather than a hanging hip  
53 (n=2). Table 1 reports individual patient and tumour characteristics.  
54  
55  
56  
57  
58  
59  
60

**Table 1** Patient demographics and surgery performed with computer-assisted navigation (n=23)

Patient number	Age (years) / Sex	Diagnosis	Tumour location*	Maximum tumour size (cm)	Surgery performed
1	56M	Chondrosarcoma	P2	7	Excision + EPR**
2	34F	Osteosarcoma	P1+P4	3	Excision + fibular strut graft
3	40F	Chondrosarcoma	P2	16	Excision + EPR
4	69M	Chondrosarcoma	P1+P4	14	Excision alone
5	64M	Chondrosarcoma	P1+P2+P3	8.5	Excision + EPR
6	60M	Chondrosarcoma	P2+P3	8	Excision + EPR
7	73M	Chondrosarcoma	P2+P3	7.5	Excision + EPR
8	73F	Chordoma	Sacrum	8	Excision alone
9	22F	Osteosarcoma	P1+P4	11	Excision alone
10	45M	Osteosarcoma	P1+P2	6	Excision + 'ice-cream' cone
11	65F	Chordoma	Sacrum	7	Excision alone
12	73M	Chordoma	Sacrum	12.5	Excision alone
13	63M	Chordoma	Sacrum	11.5	Excision alone
14	26M	Ewing's sarcoma	P1+P2+P3	13	Excision alone
15	41M	Chondrosarcoma	P2+P3	7	Excision + EPR
16	48F	Chondrosarcoma	P2	5	Excision + EPR
17	21M	Chondrosarcoma	P1+P2+P3	20	Excision, irradiation and reimplantation of hemipelvis + tricortical bone graft
18	70F	Chordoma	Sacrum	12.5	Excision alone
19	70F	Chondrosarcoma	P3	6.5	Excision alone
20	13M	Local recurrence of Irradiated Ewing's sarcoma	P1+P2	8	Excision alone
21	77M	Chordoma	Sacrum	10	Excision alone
22	58M	Chondrosarcoma	P1+P2+P3+P4	13	Excision + EPR
23	14F	Ewing's sarcoma	Sacrum	4	Excision alone

**Abbreviations**

M = male; F = female; EPR = endoprosthetic replacement

\* Location of tumour and subsequent resection required classified according to Enneking *et al.*<sup>21</sup>: P1 = iliac bone; P2 = periacetabular region; P3 = superior and inferior pubic rami; P4 = hemisacrum.

\*\* All endoprosthetic replacements used were custom-made implants

1  
2  
3  
4 Information regarding patient selection, pre-operative planning, operative  
5 technique and post-operative regimen has previously been described<sup>11</sup>. The  
6 registration error was <1mm in all cases. All margins were planned on the  
7 navigation cases to be clear of tumour and provide an adequate margin to reduce  
8 the risk of local recurrence without compromising vital structures through the  
9 resection. The margins were planned to take into consideration the histological  
10 tumour type, the grade and location of the tumour. Resection margins were  
11 considered adequate if greater than 2mm for osteosarcoma and other subtypes,  
12 with 4mm specifically considered adequate for high grade chondrosarcoma<sup>22,23</sup>.  
13  
14 Adjunctive therapy use varied by histological subtype. Patients with Ewing's  
15 sarcoma and osteosarcoma routinely had neo-adjuvantive chemotherapy as per  
16 international guidelines<sup>24,25</sup>. A single patient with high-grade chondrosarcoma  
17 had adjunctive chemotherapy to chest metastasis.

18  
19  
20 All patients were reviewed in clinic at three monthly intervals for the first two  
21 years and at six monthly intervals thereafter as per national guidelines<sup>26 27</sup>. At  
22 each visit patients were examined to assess for any clinical signs of local  
23 recurrence with radiographs of the pelvis (antero-posterior view plus lateral of  
24 any implants) and chest performed. MRI scans were also performed at six  
25 monthly intervals to assess for local recurrence and interval changes. Local  
26 recurrence was defined as any detectable local disease at follow-up, occurring  
27 either alone or in conjunction with generalised recurrence, in patients who have  
28 undergone resection. Mortality data was verified using the summative care  
29 database, which records mortality data for England, Wales and Northern Ireland.

30  
31  
32 No patient was specifically recalled for this study with all data collected from  
33 clinical records and imaging systems as part of routine patient follow-up.  
34 Institutional review board approval was not required.

### 35 36 37 Statistical analysis

38 All analyses were performed using SPSS version 21.0 software (IBM Co., Armonk,  
39 NY). Local recurrence and mortality rates were calculated using the Kaplan-  
40 Meier method. Time to event, from date of surgery, was established and patients  
41 censored according to status (alive or dead) or local recurrence.  
42  
43  
44  
45  
46  
47  
48  
49  
50  
51  
52  
53  
54  
55  
56  
57  
58  
59  
60



1  
2  
3 Covariates (patient and surgical) were compared between patients with and  
4 without local recurrence depending on data distribution. Numerical variables  
5 with a normal distribution (patient age) were compared using unpaired t-tests.  
6  
7 To compare medians in non-parametric distributions, we used Mann Whitney U-  
8 tests. Categorical data were compared using Fishers' exact tests. Due to the small  
9 size of the cohort and the limited number of outcomes recorded, it was not  
10 possible to meaningfully investigate the effects of each or multiple covariate(s)  
11 on local recurrence rates with logistic regression models. The significance level  
12 for all analyses was  $p < 0.05$ , with 95% confidence intervals (CIs) also used.  
13  
14  
15  
16  
17  
18  
19  
20  
21

## 22 Results

23 The study comprised 23 patients with primary pelvic or sacral tumours who  
24 underwent navigated resection. Nine of the patients were female and mean age  
25 at presentation was 51 years (10 to 77years, SD 21.1). Median follow-up of  
26 patients was 6 years (IQR 5.16 to 6.3years) with minimum follow-up of 4 years.  
27  
28  
29  
30  
31

32 The median tumour size at presentation was 8cm (IQR 7 to 12.5). Histological  
33 tumour subtypes were: intermediate or low-grade chondrosarcoma n=8; sacral  
34 chordoma n=6; high-grade chondrosarcoma n=3, Ewing's sarcoma n=3; high-  
35 grade osteosarcoma n=2 and low-grade osteosarcoma n=1.  
36  
37  
38  
39  
40

41 Clear bone resection margins were achieved in all cases. Margins were  
42 compromised in two cases, thus 8.7% of the primary tumours had an  
43 intralesional resection. Both of the patients suffered a local recurrence (Table 2).  
44  
45  
46  
47

## 48 Local recurrence

49 During the study period eight patients developed local disease recurrence, Table  
50 2. The overall cumulative local recurrence rate at 6-years was 35.1% (95%  
51 CI=19.3-58.1%), refer to Figure 1.  
52  
53  
54  
55  
56  
57  
58  
59  
60

Original patient number	Histological subtype	Soft-tissue margin (mm)	Bone margin (mm)	Max tumour diameter (mm)	Time to LR (m)	Metastasis (m)	Further Surgery (m)	Final status
1	Chondrosarcoma	2	5	7	29	No	Hindquarter amputation (31)	NED
5	Chondrosarcoma	Intralesional	5	8.5	12	Lung (16)	Excision of local recurrence (13)	DOD
7	Chondrosarcoma	6	5	7.5	14	Lung (15)	Hindquarter amputation (16)	DOD
8	Sacral Chordoma	1	10	8	18	No		AWD
11	Sacral Chordoma	1	9	7	15	T6 (54)	1) Excision of local recurrence (20); 2) En block resection T6 met (55); 3) Revision En block resection and fusion L3 to S1.	AWD
13	Sacral Chordoma	Intralesional	20	11.5	15	Lumbar spine (36)	Excision of local recurrence (48)	AWD
19	Chondrosarcoma	1	30	6.5	7	L4	Hindquarter amp (?) Excision of local recurrence (8 and 45)	AWD
22	Chondrosarcoma	5	10	13	7	Lung (10)		DOD

**Table 2.** Histopathological resection results and clinical outcomes in patients with local recurrence (n=8). **Abbreviation:** DVT = deep vein thrombosis; NED = no evidence of disease; AWD = alive with disease; DOD = died of disease

Tumour recurrence stratified by histological subtype was as follows: chondrosarcoma 45% (n=5) and sacral chordoma 50% (n=3). No recurrence was seen in Osteosarcoma or Ewing's sarcoma patients. Patients who suffered a local recurrence were older was higher (mean age 43 vs 65 years, p=0.006; Table

3). There were no other tumour or surgical covariates which were significantly different between patients with and without local recurrence.

Variable	Without LR	With LR	Significance
Number of patients	n= 15	n= 8	
Mean Age (years)	43 (SD 23, 95% CI 31 to 56)	65 (SD 6.6, 95% CI 60 to 71)	0.006
TUMOUR GRADE: Low Grade	n= 8	n= 3	0.296
Intermediate Grade	n=2	n= 3	
High Grade	n= 5	n= 2	
Median tumour size (cm)	10 (7*)	7.8 (8*)	0.591
Median bone resection margin (mm)	10 (5*)	9.5 (13*)	0.957
Median soft tissue resection margin (mm)	3 (3*)	1 (6*)	0.190
Proportion inadequate soft tissue margin	33%	60%	0.144

Table 3. Patient and tumour variables in patients with and without local recurrence. LR = Local recurrence, \* = Interquartile range

Three of the eight patients who suffered a local recurrence have died (mean time to death=18months (SD 7.2). Three hindquarter amputations were performed as a secondary procedure for local recurrence. Four patients had limb salvage excision for recurrent lesions. Non-operative treatment for local recurrence was chosen by two patients. Of eight patients with local recurrence one patient has no evidence of disease, the remaining 4 patients are alive with disease.

1  
2  
3 Of the 23 patients included in the study, six patients (26.1%) died at a mean time  
4 of 2.3 years (1.0 to 3.8 years) from surgery. The cumulative 5-year all-cause  
5 mortality rate was 26.1% (95% CI = 12.7%-49.1%), refer to Figure 2. In total 12  
6 patients avoided death or local recurrence at last follow-up.  
7  
8  
9

### 10 11 Further Surgery and complications 12

13  
14 Table 2 reports secondary surgery for oncological indications, metastasis and the  
15 current status of the patient. Further surgery performed, in addition to that for  
16 local recurrence, included hip manipulation under anaesthetic following  
17 dislocation (n=4); wound debridement following infection (n=3) and local  
18 metastasis excision (n=2). Two patients suffered a sciatic nerve palsy following  
19 their original surgery. A 21-year-old patient with radiation induced high grade  
20 osteosarcoma of the right iliac wing measuring 11cm underwent a hindquarter  
21 amputation 14 months after the original excision, following the diagnosis of a  
22 skip lesion. The patient died of metastatic disease 2.5 years later.  
23  
24  
25  
26  
27  
28  
29  
30  
31  
32

### 33 Discussion 34

35  
36 Our initial outcomes following computer navigation assisted surgery were  
37 encouraging with an intralesional resection rate of 8.7% and local recurrence  
38 rates of 13% up to one-year after surgery<sup>11</sup>. This study adds to the evolving  
39 literature by demonstrating the importance of the soft tissue margin, and not just  
40 the bone margin, when assessing the risk of local recurrence. The role of the  
41 margin in local recurrence is an evolving subject and whilst much remains  
42 unknown, there is evidence that the risk of local recurrence following resection is  
43 a composite function of histological variant, grade, location and quality of the  
44 tissue comprising the margin. In an unpublished series of 1077 patients with local  
45 recurrence, we found that 89% occurred within five years of diagnosis and the  
46 median time to local recurrence was fifteen months. Thus, we are confident that  
47 the follow-up (median 6-years) reported has sufficient follow up to debate  
48 oncological outcomes.  
49  
50  
51  
52  
53  
54  
55  
56  
57  
58  
59  
60

1  
2  
3 Computer navigated surgery improves the precision of bony resections, enabling  
4 the surgeon to conserve native tissue in favour of limb reconstruction and  
5 preserve adjacent neurovascular structures<sup>9,28-30</sup>. In this series we achieved wide  
6 bone clearance in all patients with no failure in navigation, but we are  
7 disappointed with the soft-tissue recurrence rate. The degree of soft tissue  
8 resection was assessed on a individual case basis and all macroscopically  
9 compromised soft tissue was removed with the tumour. Rather than planning a  
10 wider bone margin, our findings make it clear that greater attention must be paid  
11 to the soft tissue dissection. In fact, it may be that a wider soft tissue margin should  
12 be considered to allow a narrower bone resection margin. Soft-tissue margins are  
13 independent prognostic factors for local recurrence and survival, with restricted  
14 access in the pelvis and no interfacial planes to resect these large tumours, thus  
15 obtaining clear soft-tissue margins remain a challenge<sup>2</sup>. Even when using  
16 navigation, studies report soft-tissue recurrence rates of 20 to 25% at short-term  
17 follow-up<sup>8,12,14,20</sup>.

18  
19  
20  
21  
22  
23  
24  
25  
26  
27  
28  
29  
30  
31 Since publication of the original series in 2013, the authors have defined minimal  
32 soft tissue margins when resecting high grade osteosarcoma and high grade  
33 chondrosarcoma tumours to be 2mm and 4mm respectively<sup>22,23</sup>. Wide resection  
34 margins improve local recurrence rates in sacral chordoma patients<sup>4</sup>. Yang et al,  
35 2016 obtained a minimal 15mm soft tissue margin when resecting primary sacral  
36 chordomas (n=26), and reduced local recurrence rates to 7.7% at 38 months<sup>15</sup>.  
37 The use of chemoradiotherapy in planned intralesional resections also  
38 demonstrated benefit<sup>19</sup>.

39  
40  
41  
42  
43  
44  
45  
46  
47 We have demonstrated that navigation can achieve clear margins at the bony  
48 margin but this should not be at the compromise of the soft tissue margin. Equally,  
49 whilst we have demonstrated the efficacy of navigation in retaining critical  
50 structures, particularly nerve roots for sacral resections, we are yet to define the  
51 acceptable margins in many of these histological subtypes. Whilst navigation  
52 allows a resection close to the tumour, preserving critical structures, the basic  
53 principle of resection aimed at minimising the risk of local recurrence must not be  
54 overlooked, even if this necessitates sacrifice of vital neurological, vascular or  
55  
56  
57  
58  
59  
60

1  
2  
3 visceral structures<sup>20</sup>. When considering the devastating natural history of these  
4 tumours, we feel navigation surgery offers limb salvage and can preserve bladder/  
5 bowel function and mobility. Preservation of life must be considered the primary  
6 aim of any treatment for a pelvic sarcoma, although respect to quality of life and  
7 functional restoration is important to discuss with the patient when considering  
8 surgical options. However, as surgical margins are a very important predictor of  
9 outcome, the first goal should always be to achieve adequate margins<sup>13</sup>.

10  
11  
12  
13  
14  
15  
16  
17  
18 The authors have published several papers showing that computer navigated  
19 surgery in the pelvis has several benefits including reduced blood loss, reduced  
20 complication rates, reduced intralesional rates at surgery and higher disease free  
21 survival<sup>31,32</sup>. This study must be taken in context, as it reports the first 23 patients  
22 out of over 100 patients that have undergone navigated surgery. Clearly, though a  
23 technical learning curve was mastered quickly, a more philosophical learning  
24 curve combined with further evidence about the width of an adequate margin was  
25 appreciated with time. The authors remain supportive that computer navigation  
26 reduces positive margins at surgery, and it remains routinely used for pelvic  
27 sarcoma cases. However, we now strive to achieve more radical soft tissue  
28 margins when possible.

29  
30  
31  
32  
33  
34  
35  
36  
37  
38  
39 In 2012 the senior authors published data on 539 patients with primary pelvic  
40 bone or sacral sarcomas treated at the same institution. The cohort had a ten-year  
41 overall mortality of 31%<sup>1</sup>. At five years the current study had a cumulative  
42 mortality rate of 27.1%. Cho et al, 2012 reports a three-year survival rate of  
43 patients with pelvic tumours of 80.0% (95% CI 55.3 to 100)<sup>12</sup>. Overall survival for  
44 sacral chordoma treated without navigation is 97%, 71% and 47% at 5, 10 and 15  
45 years respectively<sup>4</sup>. Chondrosarcoma and osteosarcoma have poorer survival at  
46 five years, 72% and 27% respectively<sup>33,6</sup>. In keeping with evidence our study  
47 suggests that chordoma tends to recur locally with no patients dying during the  
48 period observed. In contrast, high grade chondrosarcomas, osteosarcomas and  
49 Ewing's sarcoma, with aggressive biology, can lead to patient deaths.

1  
2  
3 This study had limitations. Our hospital is a tertiary sarcoma unit treating bone  
4 sarcomas for an overall population of 22 million people. We have a stringent  
5 follow-up protocol and offer satellite clinics, but some complications may have  
6 been treated locally and unknown to us. However, we are confident in the local  
7 recurrence and mortality data. To determine the origin of local recurrences we  
8 relied upon cross sectional imaging, histology reports and senior surgeon clinic  
9 consultations. We feel this is sensitive enough to dichotomize into soft tissue or  
10 bone as the site of recurrence and differentiate between skip lesions or adjacent  
11 metastasis. Subgroup analysis, including the ability to perform regression  
12 modelling, was limited by the sample size and the relatively small number of  
13 events. A limitation of this study is that the histopathology specimens were not  
14 reassessed retrospectively for this study. Due to the nature of this study and the  
15 extended follow-up from the initial report we did not feel it was necessary for  
16 these specimens to be re-reviewed in this manner. However, these specimens  
17 were prospectively assessed by experienced histopathologists at our  
18 specialist/tertiary oncology centre, and subsequently considered in detail in our  
19 weekly multi-disciplinary team meetings (which also include the surgeons and  
20 radiologists). Therefore, we consider the data presented regarding the  
21 histopathological specimen analysis is robust for the purposes of this particular  
22 study. It was not the remit of this study to compare to a matched cohort. However,  
23 future work could encompass a retrospective case control study of comparable  
24 tumours between navigation and non-navigation assisted surgery, assessing the  
25 risk of local recurrence and the functional outcomes of patients. However, given  
26 the rare and heterogenous nature of the tumours included, it may be difficult to  
27 build comparable groups which take into consideration the myriad of variables  
28 that are known to effect local recurrence and patient survival. For the purpose of  
29 this study we wanted to compare longer term outcomes of the patients included  
30 in the initial study and felt that comparing this to our own institutions historical  
31 data relays the same important message.  
32  
33  
34  
35  
36  
37  
38  
39  
40  
41  
42  
43  
44  
45  
46  
47  
48  
49  
50  
51  
52  
53  
54  
55  
56  
57  
58  
59  
60

## Conclusions

Following the positive early experience with computer assisted navigation resection of complex pelvic and sacral tumours reducing intralesional resection rates, we have now observed that similar local recurrence free survival rates were seen in navigated resections compared with our historical non-navigated resections. Although further research is needed to explain these observations, it is suspected that increasing age, advanced disease and tumour biology are important contributory factors. Computer navigation-assisted surgery provides clear bone resection margins and precise resection, but local recurrence rates are determined by the adequacy of soft tissue margins. We advise against routinely compromising the latter to preserve function, and we encourage surgeons to preserve life by prioritising clear soft-tissue resection margins.

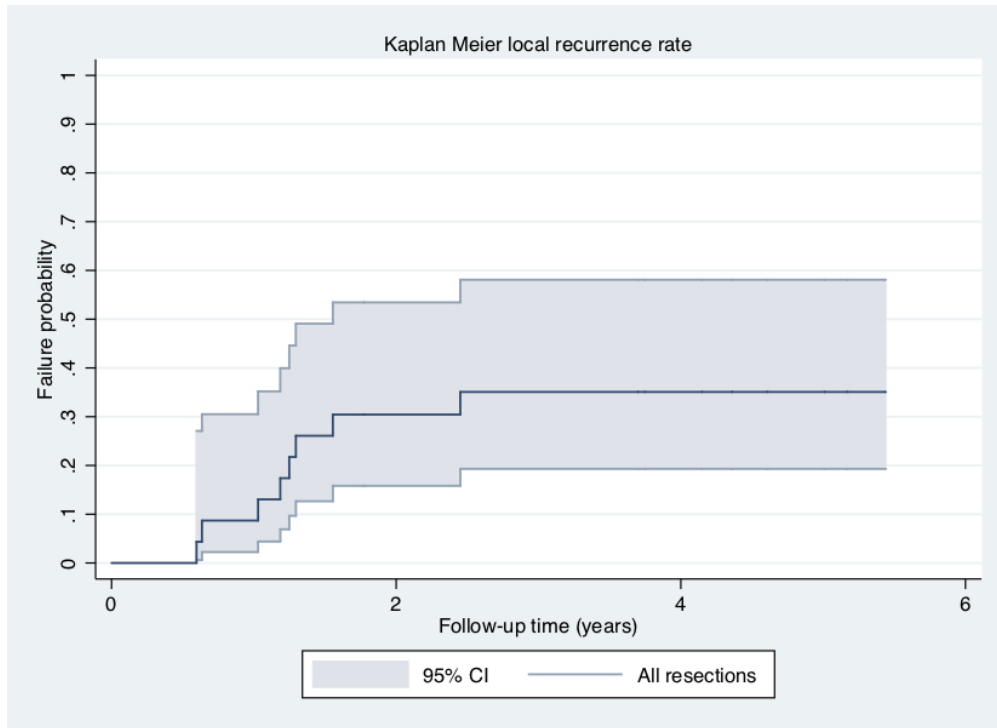


## References

1. **Jeys L, Grimer R, Carter S.** OUTCOMES OF PRIMARY BONE TUMOURS OF THE PELVIS—THE ROH EXPERIENCE. *The Bone & Joint Journal* 2012.
2. **Han I, Lee YM, Cho HS, Oh JH, Lee SH, Kim H-S.** Outcome after Surgical Treatment of Pelvic Sarcomas. *Clin Orthop Surg* 2010;2(3):160–7.
3. **Archer JE, May PL, Jeys LM.** CAOS in Paediatric Bone Tumour Surgery. *Journal of Bone and Soft Tissue.* 2015.
4. **Ruggieri P, Angelini A, Ussia G, Montalti M, Mercuri M.** Surgical margins and local control in resection of sacral chordomas. *Clin Orthop Relat Res* Springer-Verlag, 2010;468(11):2939–2947.
5. **Bus MPA, Campanacci DA, Albergo JI, Leithner A, van de Sande MAJ, Gaston CL, et al.** Conventional Primary Central Chondrosarcoma of the Pelvis: Prognostic Factors and Outcome of Surgical Treatment in 162 Patients. *J Bone Joint Surg Am* 2018;100(4):316–325.
6. **Ozaki T.** Osteosarcoma of the Pelvis: Experience of the Cooperative Osteosarcoma Study Group. *Journal of Clinical Oncology* 2003;21(2):334–341.
7. **Bindiganavile S, Han I, Yun JY, Kim H-S.** Long-term Outcome of Chondrosarcoma: A Single Institutional Experience. *Cancer Res Treat* 2015;47(4):897–903.
8. **Farfalli GL, Albergo JI, Ritacco LE, Ayerza MA, Milano FE, Aponte-Tinao LA.** What Is the Expected Learning Curve in Computer-assisted Navigation for Bone Tumor Resection? *Clin Orthop Relat Res* Springer US, 2016;1–8.
9. **Ritacco LE, Milano FE, Farfalli GL, Ayerza MA, Muscolo DL, Aponte-Tinao LA.** Accuracy of 3-D Planning and Navigation in Bone Tumor Resection. *Orthopedics* SLACK Incorporated, 2013;36(7):e942–e950.
10. **Akiyama T, Kanda S, Maeda A, Saita K.** Inferior gluteal artery detection at the greater sciatic notch with a computer-assisted navigation system during pelvic and sacral tumor resection. *Computer Assisted Surgery* 2016;21(1):18–24.
11. **Jeys L, Matharu GS, Nandra RS, Grimer RJ.** Can computer navigation-assisted surgery reduce the risk of an intralesional margin and reduce the rate of local recurrence in patients with a tumour of the pelvis or sacrum? *Bone Joint J* British Editorial Society of Bone and Joint Surgery, 2013;95-B(10):1417–1424.

12. **Cho HS, Oh JH, Han I, Kim HS.** The outcomes of navigation-assisted bone tumour surgery. *J Bone Joint Surg Br* British Editorial Society of Bone and Joint Surgery, 2012;94-B(10):1414–1420.
13. **Gerbbers JG, Jutte PC.** Hip-sparing approach using computer navigation in periacetabular chondrosarcoma. *Comput Aided Surg* Taylor & Francis, 2013;18(1-2):27–32.
14. **Wong K-C, Kumta S-M.** Computer-assisted Tumor Surgery in Malignant Bone Tumors. *Clin Orthop Relat Res* 2012;471(3):750–761.
15. **Yang Y-K, Chan C-M, Zhang Q, Xu H-R, Niu X-H.** Computer Navigation-aided Resection of Sacral Chordomas. *Chinese Medical Journal* Medknow Publications, 2016;129(2):162–168.
16. **Cheong D, Letson GD.** Computer-assisted navigation and musculoskeletal sarcoma surgery. *Cancer Control* 2011.
17. **Ieguchi M, Hoshi M, Takada J, Hidaka N, Nakamura H.** Navigation-assisted surgery for bone and soft tissue tumors with bony extension. *Clin Orthop Relat Res* 2012;470(1):275–283.
18. **Kawaguchi N, Ahmed AR, Matsumoto S, Manabe J, Matsushita Y.** The Concept of Curative Margin in Surgery for Bone and Soft Tissue Sarcoma. *Clin Orthop Relat Res* 2004;419:165–172.
19. **O'Donnell PW, Griffin AM, Eward WC, Sternheim A, Catton CN, Chung PW, et al.** The effect of the setting of a positive surgical margin in soft tissue sarcoma. *Cancer* 2014;120(18):2866–2875.
20. **Grimer RJ.** On the effect of setting of a positive surgical margin in soft tissue sarcoma. *Cancer* 2014;120(18):2803–2805.
21. **Enneking WF, Spanier SS, Goodman MA.** A system for the surgical staging of musculoskeletal sarcoma. 1980. *Clin Orthop Relat Res* 2003;415(415):4–18.
22. **Jeys LM, Thorne CJ, Parry M, Gaston CLL, Sumathi VP, Grimer JR.** A Novel System for the Surgical Staging of Primary High-grade Osteosarcoma: The Birmingham Classification. *Clin Orthop Relat Res* Springer US, 2016;475(3):842–850.
23. **Stevenson JD, Laitinen MK, Parry MC, Sumathi V, Grimer RJ, Jeys LM.** The role of surgical margins in chondrosarcoma. *European Journal of Surgical Oncology* 2018;44(9):1412–1418.
24. **Jurgens H, Craft AW.** EURO-EWING 99. 3rd ed. 1999.

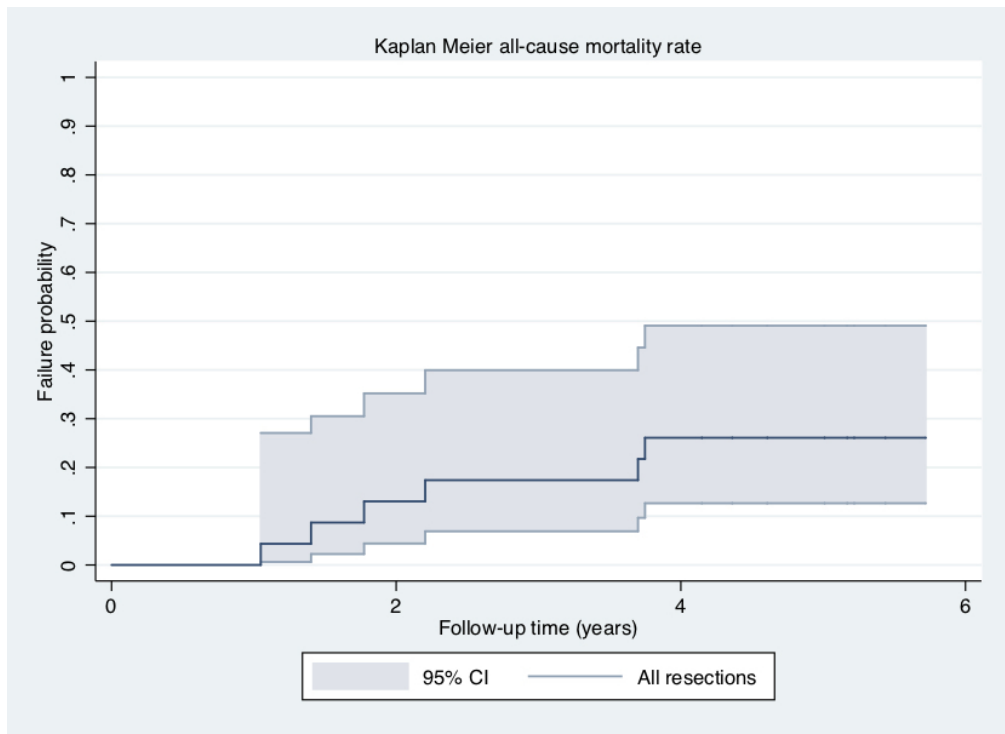
- 1  
2  
3  
4  
5  
6  
7  
8  
9  
10  
11  
12  
13  
14  
15  
16  
17  
18  
19  
20  
21  
22  
23  
24  
25  
26  
27  
28  
29  
30  
31  
32  
33  
34  
35  
36  
37  
38  
39  
40  
41  
42  
43  
44  
45  
46  
47  
48  
49  
50  
51  
52  
53  
54  
55  
56  
57  
58  
59  
60
25. **Whelan JS, Bielack SS, Marina N, Smeland S, Jovic G, Hook JM, et al.** EURAMOS-1, an international randomised study for osteosarcoma: results from pre-randomisation treatment. *Ann Oncol* 2015;26(2):407–414.
  26. **Hogendoorn PCW, ESMO/EUROBONET Working Group, Athanasou N, Bielack S, De Alava E, Dei Tos AP, et al.** Bone sarcomas: ESMO Clinical Practice Guidelines for diagnosis, treatment and follow-up. *Ann. Oncol.* Oxford University Press, 2010:v204–13.
  27. **Grimer R, Athanasou N, Gerrand C, Judson I, Lewis I, Morland B, et al.** UK Guidelines for the Management of Bone Sarcomas. *Sarcoma* 2010;2010(4, supplement):317462–14.
  28. **Sternheim A, Daly M, Qiu J, Weersink R, Chan H, Jaffray D, et al.** Navigated Pelvic Osteotomy and Tumor Resection. *The Journal of Bone and Joint Surgery, Inc*, 2015;97(1):40–46.
  29. **Cartiaux O, Docquier P-L, Paul L, Francq BG, Cornu OH, Delloye C, et al.** Surgical inaccuracy of tumor resection and reconstruction within the pelvis: an experimental study. - PubMed - NCBI. *Acta Orthop* 2009;79(5):695–702.
  30. **Cartiaux O, Banse X, Paul L, Francq BG, Aubin C-É, Docquier P-L.** Computer-assisted planning and navigation improves cutting accuracy during simulated bone tumor surgery of the pelvis. *Computer Aided Surgery* Taylor & Francis, 2013;18(1-2):19–26.
  31. **Fujiwara T, Stevenson J, Le Nail L-R, Parry M, Grimer R, Jeys L.** Clinical Outcome of Navigated vs Non-navigated Reconstruction with Ice-cream Cone Prosthesis for Bone Tumours Involving the Acetabulum. *EMSOS* [Internet] Amsterdam, 2018.
  32. **Laitinen MK, Parry MC, Albergo JI, Grimer RJ, Jeys LM.** Is computer navigation when used in the surgery of iliosacral pelvic bone tumours safer for the patient? *Bone Joint J* 2017;99-B(2):261–266.
  33. **Bergh P, Gunterberg B, Meis-Kindblom JM, Kindblom LG.** Prognostic factors and outcome of pelvic, sacral, and spinal chondrosarcomas: a center-based study of 69 cases. *Cancer* 2001;91(7):1201–1212.



Kaplan Meier curve of local recurrence rates

139x101mm (150 x 150 DPI)

1  
2  
3  
4  
5  
6  
7  
8  
9  
10  
11  
12  
13  
14  
15  
16  
17  
18  
19  
20  
21  
22  
23  
24  
25  
26  
27  
28  
29  
30  
31  
32  
33  
34  
35  
36  
37  
38  
39  
40  
41  
42  
43  
44  
45  
46  
47  
48  
49  
50  
51  
52  
53  
54  
55  
56  
57  
58  
59  
60



Kaplan Meier curve for all-cause mortality

139x101mm (150 x 150 DPI)