



Khan, A., Schlich, B-L., Jenkin, M. E., Shallcross, B. M. A., Moseley, K., Walker, C., Morris, W. C., Derwent, R. G., Percival, C. J., & Shallcross, D. (2018). A Two-Decade Anthropogenic and Biogenic Isoprene Emissions Study in a London Urban Background and a London Urban Traffic Site. *Atmosphere*, 9(10), [387].
<https://doi.org/10.3390/atmos9100387>

Publisher's PDF, also known as Version of record

License (if available):
CC BY

Link to published version (if available):
[10.3390/atmos9100387](https://doi.org/10.3390/atmos9100387)

[Link to publication record in Explore Bristol Research](#)
PDF-document

University of Bristol - Explore Bristol Research

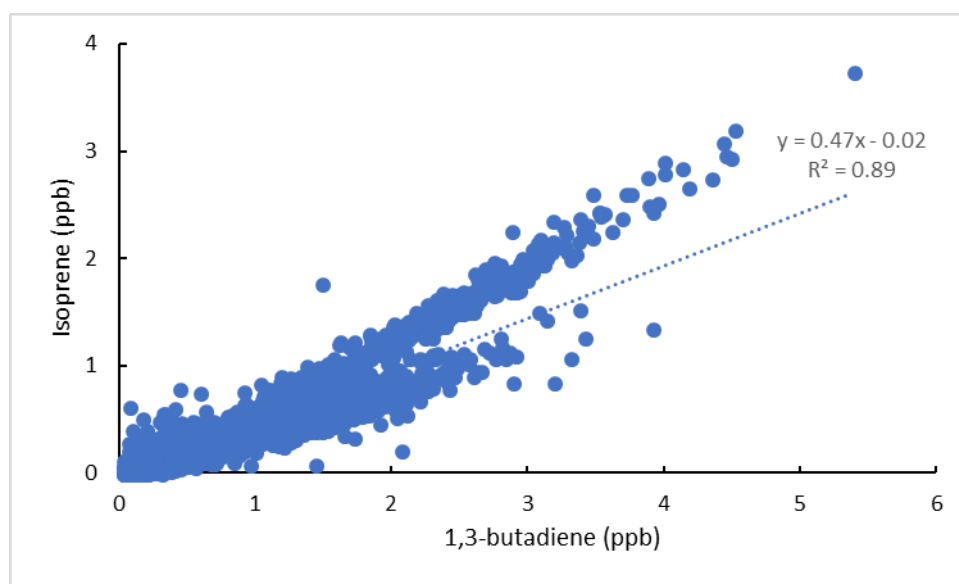
General rights

This document is made available in accordance with publisher policies. Please cite only the published version using the reference above. Full terms of use are available:
<http://www.bristol.ac.uk/red/research-policy/pure/user-guides/ebr-terms/>

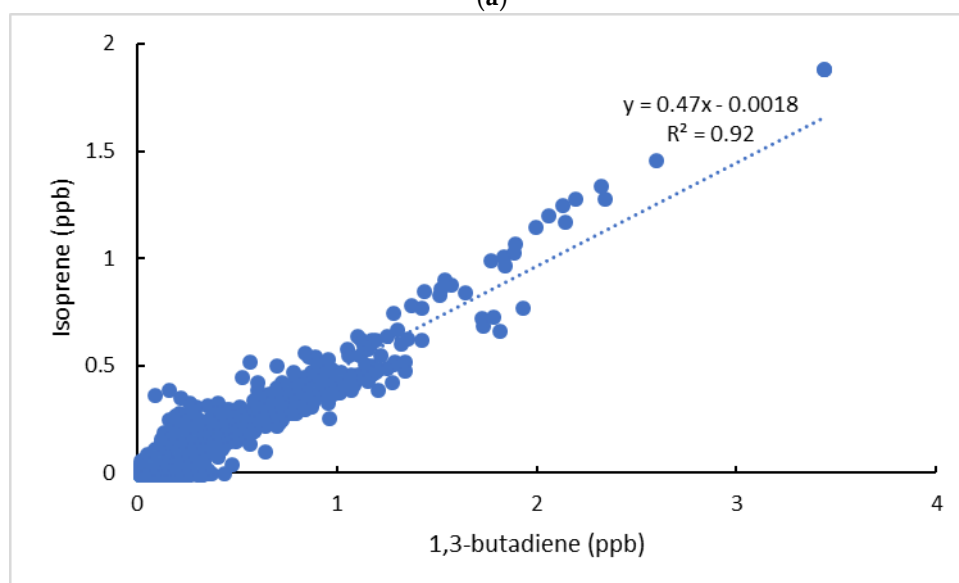
Supplementary Material:

A Two-Decade Anthropogenic and Biogenic Isoprene Emissions Study in a London Urban Background and a London Urban Traffic Site

M. Anwar H. Khan ¹, Billie-Louise Schlich ¹, Michael E. Jenkin ², Beth M. A. Shallcross ³, Katherine Moseley ¹, Catherine Walker ¹, William C. Morris ¹, Richard G. Derwent ⁴, Carl J. Percival ⁵ and Dudley E. Shallcross ^{1,6,*}

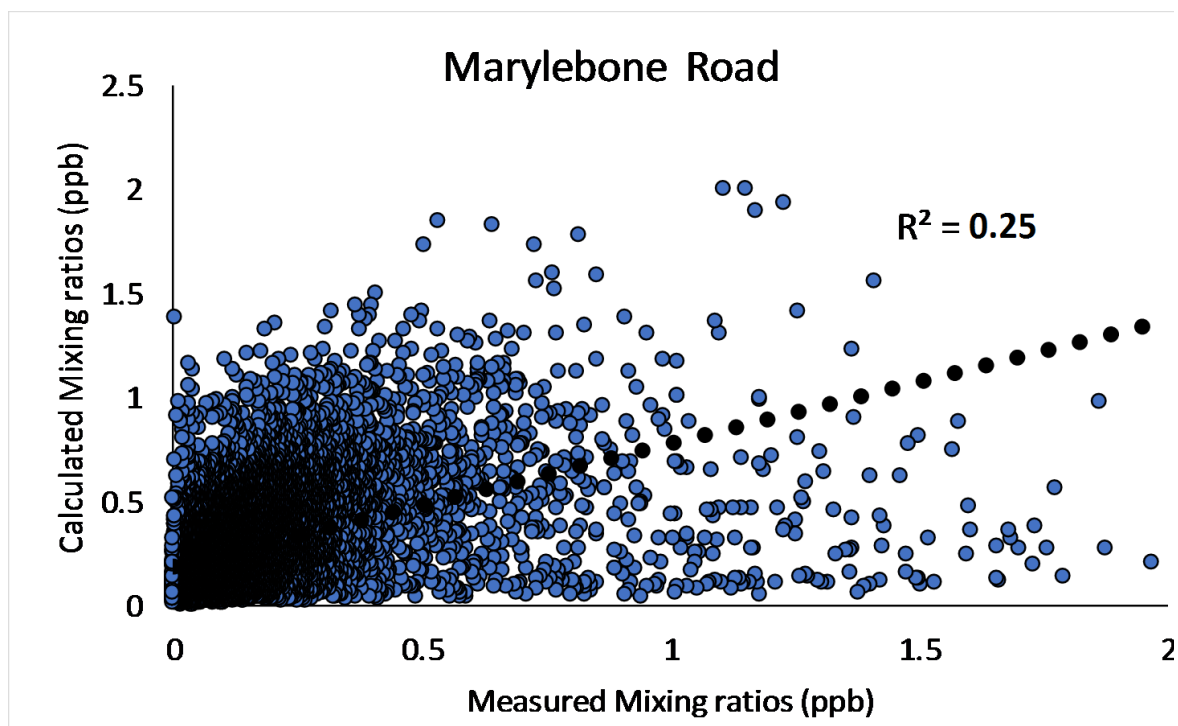


(a)

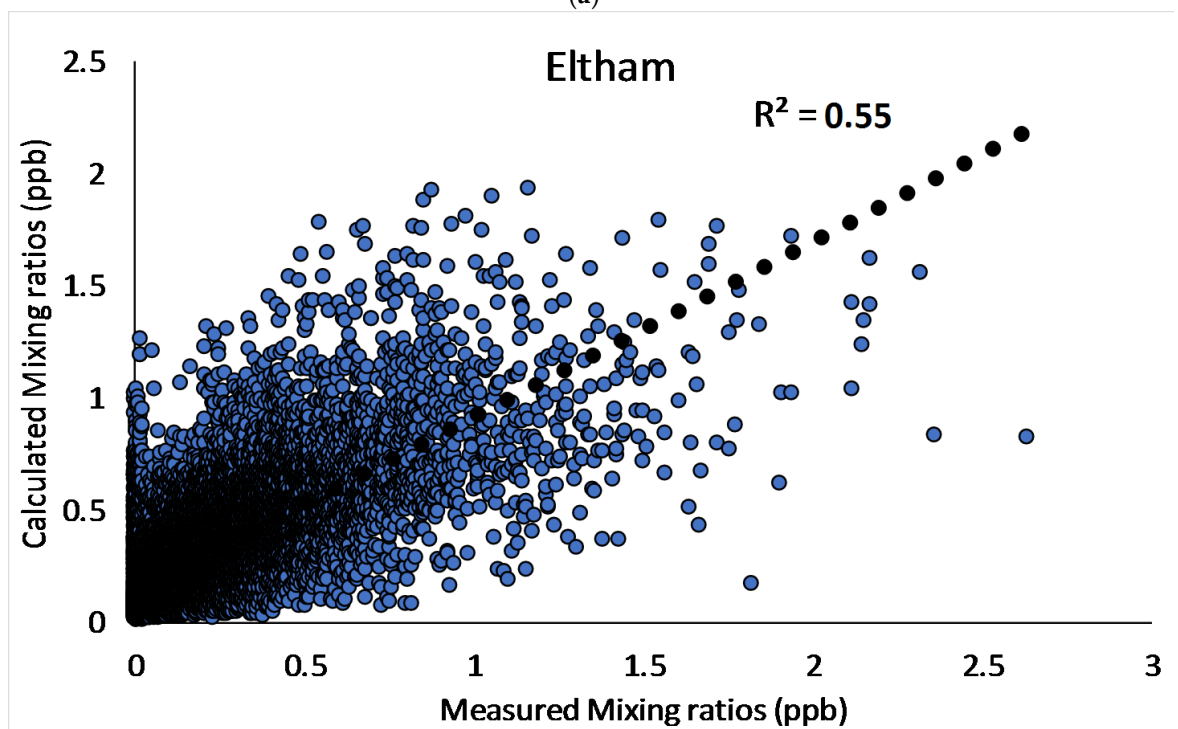


(b)

Figure S1. The correlation plots between isoprene and 1,3-butadiene during winter months of the time period 1997–2017, (a) Marylebone Road, (b) Eltham.



(a)



(b)

Figure S2. The relationship between calculated and measured biogenic isoprene mixing ratios (a) Marylebone Road, (b) Eltham.

Table S1. Cobb-Douglas model analysis results for a series of heatwave periods.

Time Series	lnA	α	β	Υ	r^2
18–24 June 2005 (Eltham)	-1.12 (p = 0.01)	1.88 (p < 0.0001)	0.21 (p < 0.0001)	0.03 (p = 0.04)	0.75
13–17 July 2005 (Eltham)	-3.53 (p = 0.001)	2.43 (p < 0.0001)	0.23 (p < 0.0001)	0.06 (p = 0.05)	0.80
8–12 June 2006 (Eltham)	-4.71 (p < 0.0001)	2.12 (p < 0.0001)	0.10 (p = 0.002)	0.05 (p = 0.01)	0.78
30 June–4 July 2006 (Eltham)	-2.2 (p < 0.0001)	1.91 (p < 0.0001)	0.21 (p < 0.0001)	0.06 (p = 0.01)	0.92
16–21 July 2006 (Eltham)	-1.63 (p = 0.0006)	1.54 (p < 0.0001)	0.31 (p < 0.0001)	0.06 (p = 0.03)	0.89
24–25 July 2012 (Eltham)	-1.5 (p = 0.001)	1.37 (p < 0.0001)	0.33 (p = 0.0006)	0.05 (p = 0.01)	0.84
13–23 July 2013 (Eltham)	-5.5 (p < 0.0001)	3.26 (p < 0.0001)	0.24 (p < 0.0001)	0.05 (p = 0.04)	0.86
6–12 August 2003 (Marylebone Road)	-4.9 (p < 0.0001)	2.82 (p < 0.0001)	0.27 (p < 0.0001)	0.11 (p = 0.01)	0.82