



Gordon, H., Nath, S., Trevillion, K., Moran, P., Pawlby, S., Newman, L., Howard, L. M., & Molyneaux, E. (2019). Self-Harm, Self-Harm Ideation, and Mother-Infant Interactions: A Prospective Cohort Study. *Journal of Clinical Psychiatry*, *80*(5), [18m12708].  
<https://doi.org/10.4088/JCP.18m12708>

Peer reviewed version

Link to published version (if available):  
[10.4088/JCP.18m12708](https://doi.org/10.4088/JCP.18m12708)

[Link to publication record in Explore Bristol Research](#)  
PDF-document

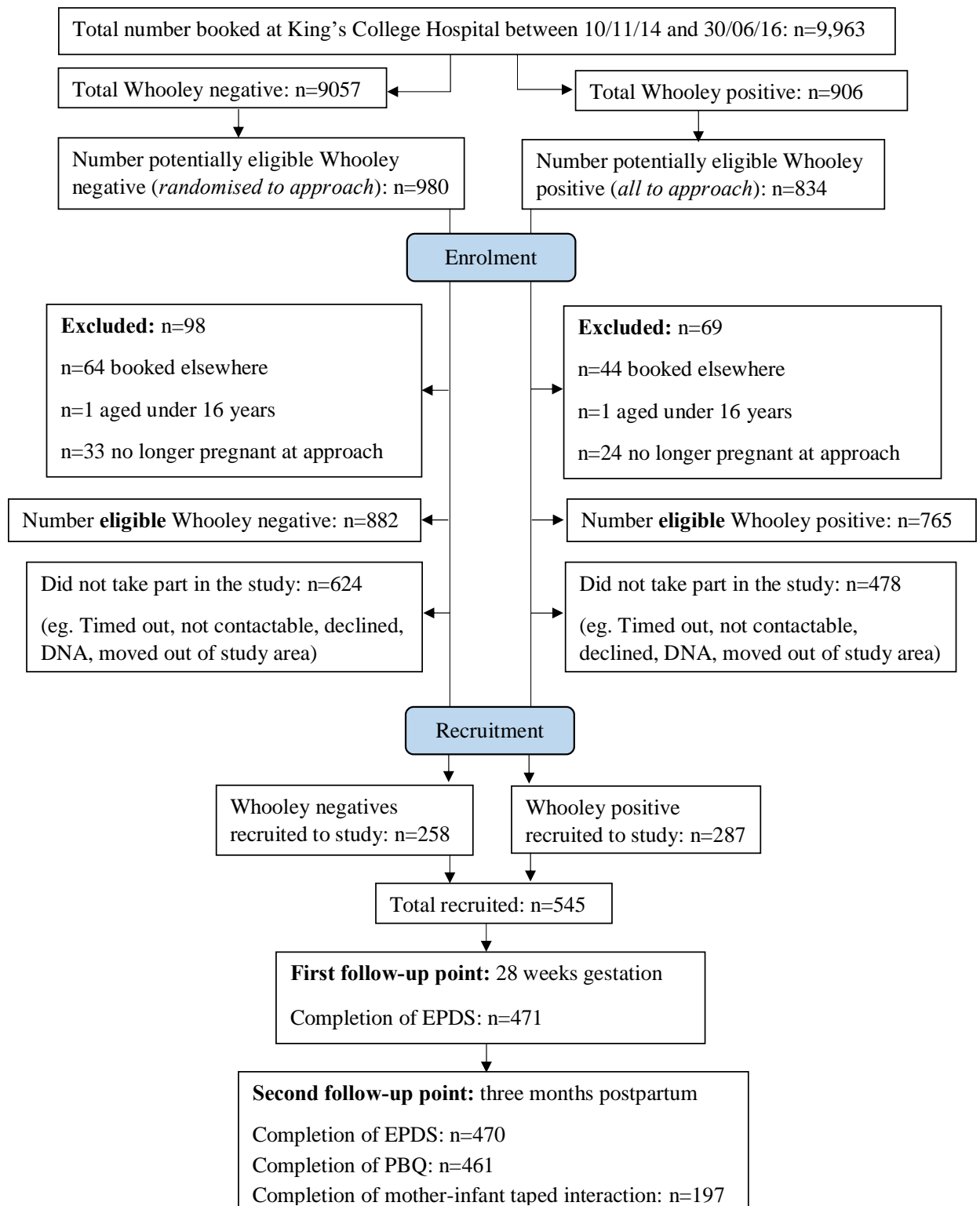
## University of Bristol - Explore Bristol Research

### General rights

This document is made available in accordance with publisher policies. Please cite only the published version using the reference above. Full terms of use are available:  
<http://www.bristol.ac.uk/red/research-policy/pure/user-guides/ebr-terms/>

## Supplementary material

### Supplementary Figure 1: Participant selection



**Supplementary Table 1: Unweighted demographics of participants lost to follow-up at three months postpartum**

		Data at three months postpartum (n=474)	Lost to follow up at three months postpartum (n=71)	P value <sup>a</sup>
		<i>Number (%)</i>	<i>Number (%)</i>	
<b>Age</b>	16 -24	43 (9.1)	13 (18.3)	0.122
	25 – 29	86 (18.1)	15 (21.1)	
	30 – 34	161 (34.0)	18 (25.4)	
	35 -39	146 (30.8)	17 (23.9)	
	≥40	38 (8.0)	8 (11.3)	
<b>Ethnicity</b>	White (including English, Welsh, Scottish, Irish, British, other white)	260 (54.9)	24 (33.8)	0.020
	Black (including British, Caribbean, African, other black)	146 (30.8)	31 (43.7)	
	Mixed (including white and black Caribbean, white and black African, white and Asian, other mixed/multiple ethnic)	19 (4.0)	4 (5.6)	
	Asian (including British Indian, British Bangladeshi, British Pakistani, British Chinese, other Asian)	21 (4.4)	4 (5.6)	
	Other (including Arab, gypsy or traveller, other)	28 (5.9)	8 (11.3)	
<b>Born in UK</b>	Yes	241 (50.8)	21 (29.6)	0.001
	No	233 (49.2)	50 (79.4)	
<b>Yearly household income</b>	£0-£5475	32 (7.3)	13 (18.3)	<0.001
	£5476-£14,999	26 (5.5)	4 (5.6)	

	£15,000-£30,999	60 (12.8)	11 (15.5)	
	£31,000-£45,999	56 (11.9)	4 (5.6)	
	£46,000-£60,999	58 (12.4)	5 (7.0)	
	£61,000+	138 (29.4)	7 (9.9)	
	Prefer not to say	97 (20.7)	27 (38.0)	
<b>Highest qualification</b>	GCSE or below	50 (10.6)	15 (21.1)	<0.001
	A-levels or vocational training	87 (18.4)	22 (31.0)	
	University or professional	337 (71.1)	34 (47.9)	
<b>Relationship status</b>	Single	48 (10.1)	14 (19.7)	0.009
	Partnered, not cohabiting	66 (13.9)	16 (22.5)	
	Married or cohabiting	351 (74.1)	41 (57.8)	
	Separated, divorced, widowed	9 (1.9)	0 (0.0)	
<b>Number of other children</b>	0	232 (49.0)	39 (54.9)	0.056
	1-2	221 (46.6)	25 (35.2)	
	3+	21 (4.4)	7 (9.9)	
<b>EPDS score at baseline</b>	<13	356 (75.7)	47 (66.2)	0.085
	≥13	114 (24.3)	24 (33.8)	
<b>Past history of self-harm</b>	No	408 (86.3)	60 (84.5)	0.692
	Yes	65 (13.7)	11 (15.5)	
<b>Whooley status</b>	Negative	236 (49.8)	22 (31.0)	0.003
	Positive	238 (50.2)	49 (69.0)	

<sup>a</sup> Significant test was performed to compare the associations between variables. Pearson chi<sup>2</sup> test used for categorical variables and t test for continuous variables.