



on behalf of the National Cancer Research Institute Haemato-Oncology Clinical Studies Group (2019). Patient-reported outcome results from the open-label, randomized phase III myeloma X trial evaluating salvage autologous stem-cell transplantation in relapsed multiple myeloma. *Journal of Clinical Oncology*, 37(19), 1617-1628. <https://doi.org/10.1200/JCO.18.01006>

Publisher's PDF, also known as Version of record

License (if available):
CC BY

Link to published version (if available):
[10.1200/JCO.18.01006](https://doi.org/10.1200/JCO.18.01006)

[Link to publication record in Explore Bristol Research](#)
PDF-document

This is the final published version of the article (version of record). It first appeared online via ASCO at <https://doi.org/10.1200/JCO.18.01006> . Please refer to any applicable terms of use of the publisher.

University of Bristol - Explore Bristol Research

General rights

This document is made available in accordance with publisher policies. Please cite only the published version using the reference above. Full terms of use are available: <http://www.bristol.ac.uk/red/research-policy/pure/user-guides/ebr-terms/>

Patient-Reported Outcome Results From the Open-Label, Randomized Phase III Myeloma X Trial Evaluating Salvage Autologous Stem-Cell Transplantation in Relapsed Multiple Myeloma

Sam H. Ahmedzai, MBChB¹; John A. Snowden, MD²; Andrew John Ashcroft, PhD³; David Allan Cairns, PhD⁴; Cathy Williams, MD⁵; Anna Hockaday⁴; Jamie D. Cavenagh, MD⁶; Debo Ademokun, MBChB⁷; Eleni Tholouli, PhD⁸; David Allotey, MBChB⁹; Vijay Dhanapal, MBChB¹⁰; Matthew Jenner, MBBS¹¹; Kwee Yong, PhD¹²; Jim Cavet, PhD¹³; Hannah Hunter, MD¹⁴; Jennifer M. Bird, MD¹⁵; Guy Pratt, PhD¹⁶; Christopher Parrish, PhD⁴; Julia M. Brown, MSc⁴; Treen C.M. Morris, MD¹⁷; and Gordon Cook, PhD⁴ on behalf of the National Cancer Research Institute Haemato-Oncology Clinical Studies Group

PURPOSE Salvage autologous stem-cell transplantation (sASCT) in patients with multiple myeloma (MM) relapsing after a prior autologous stem-cell transplantation leads to increased remission duration and overall survival. We report a comprehensive study on patient-reported outcomes, including quality of life (QoL) and pain in sASCT.

METHODS Patients were randomly assigned to either sASCT or nontransplantation consolidation (NTC). Pain and QoL were assessed as secondary outcomes using validated QoL instruments (European Organisation for Research and Treatment of Cancer QLQ-C30 and myeloma-specific module, QLQ-MY20; the Brief Pain Inventory [Short Form]; and the Leeds Assessment of Neuropathic Symptoms and Signs [Self-Assessment] scale).

RESULTS A total of 288 patients (> 96%) consented to the QoL substudy. The median follow-up was 52 months. The European Organisation for Research and Treatment of Cancer QLQ-C30 Global health status scores were higher (better) in the NTC group at 100 days after random assignment ($P = .0496$), but not at later time points. Pain interference was higher (worse) in the sASCT group than in the NTC group at 6 months after random assignment ($P = .0267$), with patients with sASCT reporting higher scores for Pain interference with daily living for up to 2 years after random assignment. Patients reporting lower concerns about adverse effects of treatment after sASCT had a time to progression advantage.

CONCLUSION Patients with sASCT with relapsed MM demonstrated a comparative reduction in QoL and greater impact of treatment adverse effects lasting for 6 months and up to 2 years for pain, after which patients who had received sASCT reported better outcomes. Patients who experienced lower adverse effects after sASCT had longer time to progression and overall survival, showing the need to improve symptom management peri-transplantation. To our knowledge, this study provides the most comprehensive picture of QoL before and after sASCT in patients with relapsed MM.

J Clin Oncol 37:1617-1628. © 2019 by American Society of Clinical Oncology

Licensed under the Creative Commons Attribution 4.0 License 

INTRODUCTION

Despite advances in novel antimyeloma agents,¹⁻⁴ the use of a salvage autologous stem-cell transplantation (sASCT) has continued to represent an option in well-selected patients with multiple myeloma (MM) because of the potential for sustained disease control. sASCT was originally supported by retrospective, registry-based, or single-center analyses,⁵⁻⁸ but definitive evidence of its efficacy in terms of significantly improved time to progression (TTP), progression-free survival (PFS), and overall survival (OS) was provided by the UK National Cancer Research Institute Myeloma X trial.^{9,10}

With improving survival, MM is being experienced by an increasing proportion of patients as a chronic illness.^{11,12} However, even myeloma in remission may be associated with many symptoms, which often arise as a consequence of myeloma itself, its treatment, and interactions with comorbid conditions accompanying aging. A cumulative burden of symptoms and treatment adverse effects, including various forms of pain, all affect health-related quality of life (QoL).^{13,14} There has been growing interest in the methodology of evaluating patient-reported outcomes (PROs) to measure the impact of both novel agents and autologous stem-cell

ASSOCIATED CONTENT

See accompanying Editorial on page 1598

Data Supplements

Author affiliations and support information (if applicable) appear at the end of this article.

Accepted on February 26, 2019 and published at [jco.org](https://doi.org/10.1200/JCO.18.01006) on April 10, 2019; DOI <https://doi.org/10.1200/JCO.18.01006>

transplantation (ASCT) on QoL in patients with MM.¹⁵⁻¹⁸ Studies have also reported on PROs in larger cohorts of patients undergoing ASCT and allogeneic transplantations for other conditions and in older populations.¹⁹⁻²³ However, few studies have examined the years after transplantation that patients with MM can now expect to survive.

A secondary aim of Myeloma X was to evaluate the impact of sASCT compared with nontransplantation consolidation (NTC) with oral cyclophosphamide once per week on PROs relating to QoL and pain at first relapse after a prior ASCT and after reinduction chemotherapy. The hypothesis was that ASCT was expected to be superior to NTC in terms of TTP. Therefore, ASCT-related toxicity in the short term and its potential impact on QoL, as well as patients' long-term QoL, were of interest. Furthermore, we sought to evaluate the association of QoL at random assignment with subsequent clinical outcomes and to identify patient subgroups that may gain most QoL benefit from sASCT.

METHODS

Study Design

Patients with symptomatic, measurable MM were eligible if they required treatment of first progressive disease (as defined by the International Myeloma Working Group criteria²⁴ at least 18 months after a prior ASCT). Inclusion and exclusion criteria and the trial procedures have been described in detail previously^{9,10} and are summarized in the trial CONSORT diagram (Fig 1) and Data Supplement.

End Points

The primary end point was TTP; secondary end points were response rate, PFS, OS, toxicity and safety, pain, and QoL.

Patient-Reported Outcomes

Pain and QoL were assessed in patients consenting to the QoL substudy. These patients were willing and able to complete the pain and QoL questionnaires at specified time points throughout the study. All instruments were self-administered to avoid interviewer bias and to enable the patients to complete the questionnaires at home if they preferred.

The European Organization for Research and Treatment of Cancer Quality of Life Questionnaire (EORTC QLQ-C30) and the EORTC myeloma-specific module (EORTC QLQ-MY20), were used to assess QoL during reinduction and randomized treatment (Data Supplement). Pain experience was captured using the Brief Pain Inventory (Short Form) [BPI-SF], which assesses the severity of pain and its impact on aspects of daily living in patients with chronic pain.²⁵ The Leeds Assessment of Neuropathic Symptoms and Signs (Self-Assessment; S-LANSS) pain scale was administered as a diagnostic tool to assess the extent to which the pain was neuropathic.²⁶

Questionnaires were administered before registration and after completion of reinduction. For randomly assigned

patients, the questionnaires were administered before randomization, unless within 2 weeks of the previous questionnaires. These questionnaires were administered in the clinic. Questionnaires were then sent by mail at 100 days after random assignment, 6 and 12 months after random assignment, and then annually until the last randomly assigned patient was 2 years after random assignment (Fig 1) in the absence of disease progression. In this analysis, all data up to 2 years after random assignment are included.

Statistical Analysis

Sample size and trial details have been described previously.^{9,10} The cutoff date for this analysis was July 14, 2015. The intention-to-treat population for the QoL substudy included all consenting patients who had completed at least one questionnaire. All statistical analyses were undertaken in SAS (version 9.4; SAS Institute, Cary, NC). All statistical tests were two-sided and were considered significant at the 5% level.

sASCT was expected to be superior to NTC in terms of TTP. Therefore, ASCT-related toxicity in the short term and its potential impact on QoL, as well as patients' long-term QoL, were of interest. EORTC QLQ-C30, EORTC QLQ-MY20, the S-LANSS pain scale, and the BPI-SF were used to measure temporal changes in patient-assessed QoL and pain, and their association with treatment. Of individual interest were the QLQ-C30 Global health status score, BPI-SF Pain interference scale, and MY20 Side effects of treatment subscale. Adjustments to the 5% significance level were not made for repeating the analysis for these scales because they were defined prospectively as being of individual interest in the study Statistical Analysis Plan, which was finalized before any analysis was undertaken. No power calculations were prespecified for these prospectively defined scales. For all other QLQ-C30, QLQ-MY20, BPI-SF subscales, and the S-LANSS, no statistical hypothesis testing was performed to compare between treatment groups.

QoL subscales were summarized using means, 95% CIs, and differences between the two groups. For randomly assigned patients, multilevel repeated mixed model analyses, which allowed for randomized treatment, time effects, treatment-time interactions, and baseline QoL (fixed effects), and patient and patient-time interaction (random effects) were used. Additional details are given in the Data Supplement.

RESULTS

Patients and Treatment

Between April 16, 2008, and November 19, 2012, 288 of the 297 patients registered consented to the QoL substudy; 174 patients were subsequently randomly assigned to receive sASCT (n = 89; 88 consented to the QoL substudy) or NTC (n = 85; 83 consented). Baseline demographic and

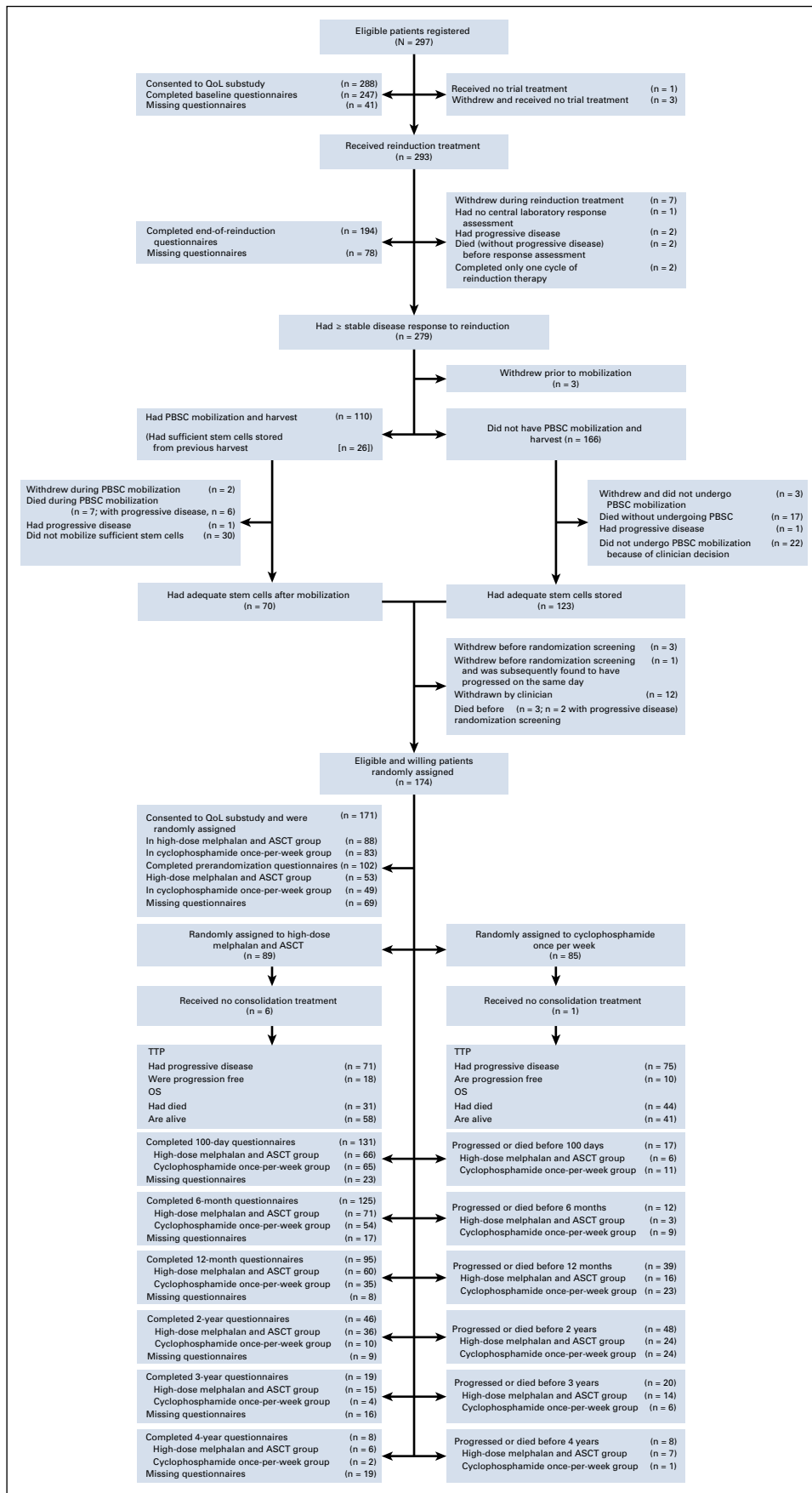


FIG 1. CONSORT diagram for Myeloma X study, including details of European Organisation for Research and Treatment of Cancer (EROTC) QLQ-C30 and MY20 questionnaire return. ASCT, autologous stem-cell transplantation; OS, overall survival; PBSC, peripheral-blood stem cell; QoL, quality of life; TTP, time to progression.

disease characteristics were well balanced between the treatment groups (Table 1), except for a higher proportion of patients with International Staging System III in the transplantation group. Patients consenting to the QoL substudy were similar to those who did not consent at registration and randomization (Data Supplement).

Questionnaire Compliance

Compliance was good, with 76.1% of all expected questionnaires returned among consenting patients and similar rates of compliance comparing randomly assigned groups (Data Supplement). The greatest rate of noncompliance for EORTC QLQ-C30 and QLQ-MY20 questionnaires was at the randomization baseline time point (59.6% complying; Data Supplement). For the S-LANSS and BPI-SF questionnaires, compliance was slightly less (54.4% and 53.8%, respectively; Data Supplement).

Subsequently, among the randomly assigned QoL population, more patients in the sASCT group completed the QLQ-C30, MY20, and other questionnaires at later time points, owing to the increased TTP (median, 19 months; 95% CI, 16 to 26 months; v 11 months; 95% CI, 9 to 12 months); hazard ratio [HR], 0.45; 95% CI, 0.31 to 0.64; log-rank $P < .001$; Data Supplement).

QoL and Pain With Respect to Reinduction Treatment

The adjusted means and 95% CIs (Data Supplement) with baseline mean scores (Table 1) show that the majority of adjusted subscale means had changed compared with the trial entry subscale means. Global health status, Fatigue, and Diarrhea demonstrated medium-sized, clinically relevant differences.²⁷ Role functioning, Social functioning, Nausea/vomiting, Appetite loss, Constipation, Insomnia, and Dyspnea demonstrated small clinically relevant differences.²⁷ The BPI-SF Pain severity score was similar to trial entry, but the Pain interference score increased slightly (Data Supplement).

QoL and Pain With Respect to Randomized Treatment

Figures 2 and 3 and the Data Supplement show the adjusted mean subscale scores of the EORTC QLQ-C30 and MY20 and the mean BPI-SF scores. It should be noted that there were imbalances at randomization baseline in a number of subscales, including Global health status (Table 1). In the majority of patients, the QoL subscale seemed to be worse in the sASCT group. The reasons for this imbalance could not be identified.

Global health status subscale was significantly different between groups at 100 days after random assignment ($P = .0496$; Table 2), but at no other time points after random assignment (Table 2). The Global health status score was higher at 100 days after random assignment by 9.2 points in the NTC group of the trial—a small-medium size difference.²⁷ This deterioration in Global health status for patients receiving sASCT compared with NTC dissipated to a trivial²⁷ difference at 6 months and a smaller trivial

difference at 1 year. The difference at 2 years favored sASCT but was still trivial. The Side effects of treatment subscale was higher in the sASCT group of the trial at 100 days and 6 months after random assignment (Table 2; Fig 2). This difference was small (7.6 and 5.9 points at 100 days and 6 months, respectively) and subsequently dissipated.

There was no significant difference between the trial groups for Pain interference, adjusted for baseline score and baseline neuropathic pain level at the 100-day post-randomization time point ($P = .0602$; Table 2); there were significant differences at 6 months ($P = .0267$; Table 2) and similar significant differences up to 2 years (Table 3; Data Supplement). In all of the time points considered, Pain interference was approximately 1 point lower in the NTC group, a clinically relevant difference. Sensitivity analysis under an assumption of data missing at random using multiple imputation by chained equations provided similar estimates, but in the case of Global health status, this was not significant (Data Supplement).

Subgroup Analysis

Post hoc exploratory analysis of key patient subgroups that had previously been investigated for clinical outcomes (TTP and OS) showed no significant heterogeneity of treatment effect on subscales of special interest: Global health status (Data Supplement), Side effects of treatment (Data Supplement), and BPI-SF Pain interference score (Data Supplement). The greatest variability in estimates was observed in the adverse cytogenetics risk group, which was small for the intersection of patients with completed questionnaires and available cytogenetics.

Association Between Baseline Scales and Outcome

Post hoc exploratory analysis of TTP by randomly assigned allocation suggested that patients with Global health status greater than median at randomization (Data Supplement) and who received sASCT had a significant TTP advantage over those receiving NTC (HR, 0.3; 95% CI, 0.15 to 0.61; $P = .006$). However, with multivariable Cox regression analysis accounting for stratification factors, this difference was not significant. Patients who reported a lower than median score on the Side effects of treatment subscale randomization and who received sASCT had a significant TTP advantage over those receiving NTC (HR, 0.24; 95% CI, 0.10 to 0.55; $P = .003$). This survival difference was maintained with multivariable Cox regression analysis (HR, 0.20; 95% CI, 0.04 to 1.00; $P = .0499$). Pain scores were not found to be strongly predictive of outcome (TTP and OS; Data Supplement).

DISCUSSION

Bony pain is a significant feature of myeloma and persists even when the disease is controlled because of both a lack of bone repair and the mechanical stresses of movement. This can persist into remission when the disease is not

TABLE 1. Patient Baseline Characteristics of the Quality of Life Substudy Population at Registration and Random Assignment

Characteristic	Registration (n = 288)	sASCT (n = 88)	NTC (n = 83)
Age, years			
Median	61	61	61
Range	38-75	40-73	40-73
Sex			
Male	201 (69.8)	64 (72.7)	60 (72.3)
Female	87 (30.2)	24 (27.3)	23 (27.7)
Ethnicity			
White	260 (90.3)	80 (90.9)	78 (94.1)
Asian	7 (2.3)	3 (3.3)	2 (2.4)
Black	13 (4.5)	3 (3.4)	2 (2.4)
Other	4 (1.4)	0 (0)	0 (0)
Not stated	5 (1.7)	2 (2.3)	1 (1.2)
International Staging System*			
I	182 (63.2)	56 (63.6)	50 (60.2)
II	60 (20.8)	18 (20.5)	21 (25.3)
III	25 (8.7)	8 (9.1)	3 (3.6)
Missing	21 (7.3)	6 (6.8)	9 (10.8)
ECOG performance status			
0	158 (54.9)	37 (42.0)	41 (49.4)
1	109 (37.8)	42 (47.7)	33 (39.8)
2	16 (5.6)	9 (10.2)	7 (8.4)
Missing	5 (1.7)	0 (0)	2 (2.4)
Isotype			
IgG	186 (64.6)	60 (68.2)	56 (67.5)
IgA	53 (18.4)	13 (14.8)	17 (20.5)
Light chain only	26 (9.0)	6 (6.8)	7 (8.4)
IgM/IgD	3 (1.0)	1 (1.1)	1 (1.1)
Nonsecretory	9 (3.1)	3 (3.4)	2 (2.4)
Missing	11 (3.8)		
TTP post-ASCT1, years			
Median	2.5	2.6	2.5
Range	0.4-12.4	1.0-12.4	0.7-6.5
Missing	38	9	11
Cytogenetic features†			
t(4;14)	13 (9.1)	5 (11.6)	3 (7.0)
t(11;14)	15 (10.5)	3 (7.0)	4 (9.3)
t(14;16)	3 (2.1)	0 (0)	2 (4.7)
Deletion 17p	10 (7.0)	4 (9.3)	1 (2.3)
Hyperdiploidy	19 (13.3)	4 (9.3)	5 (11.6)
Missing data/not tested	145	45	40
EORTC QLQ-C30 functional domain scores, mean (95% CI)			
GHS/QoL	64.4 (61.5 to 67.3)	51.0 (44.7 to 57.3)	58.8 (52.5 to 65.2)
Physical functioning	71.4 (68.4 to 74.4)	63.1 (56.5 to 69.8)	71.2 (64.7 to 77.6)

(continued on following page)

TABLE 1. Patient Baseline Characteristics of the Quality of Life Substudy Population at Registration and Random Assignment (continued)

Characteristic	Registration (n = 288)	sASCT (n = 88)	NTC (n = 83)
Role functioning	63.6 (59.4 to 67.8)	46.5 (37.7 to 55.4)	60.2 (51.4 to 69.0)
Cognitive functioning	82.8 (80.2 to 85.5)	74.8 (68.1 to 81.6)	80.6 (74.1 to 87.1)
Emotional functioning	77.9 (75.2 to 80.6)	71.3 (65.7 to 77.0)	78.2 (71.1 to 85.4)
Social functioning	66.8 (62.8 to 70.8)	49.0 (40.3 to 57.7)	65.0 (56.8 to 73.2)
EORTC QLQ-C30 symptom domain scores, mean (95% CI)			
Fatigue	36.7 (33.2 to 40.2)	54.5 (47.4 to 61.6)	41.5 (34.0 to 49.0)
Pain	37.7 (33.6 to 41.9)	43.4 (35.0 to 51.8)	35.4 (26.9 to 43.9)
Nausea/vomiting	5.2 (3.7 to 6.7)	9.9 (5.3 to 14.6)	9.2 (4.5 to 13.9)
Appetite loss	16.0 (12.9 to 19.2)	28.2 (19.7 to 36.7)	19.0 (10.5 to 27.6)
Constipation	13.4 (10.5 to 16.3)	22.6 (14.8 to 30.4)	17.0 (9.9 to 24.1)
Diarrhea	6.2 (4.2 to 8.1)	16.3 (8.3 to 24.4)	6.8 (2.9 to 10.7)
Insomnia	30.3 (26.0 to 34.5)	41.5 (32.0 to 51.0)	38.8 (28.7 to 48.8)
Dyspnea	22.2 (18.6 to 25.7)	28.3 (21.0 to 35.6)	15.6 (10.1 to 21.2)
Financial difficulties	22.1 (18.0 to 26.1)	27.5 (17.2 to 37.7)	19.7 (11.2 to 28.2)
EORTC QLQ-MY20 scores, mean (95% CI)			
Disease symptoms	42.3 (39.0 to 45.7)	46.4 (38.8 to 54.0)	37.2 (28.8 to 45.6)
Adverse effects	29.1 (26.2 to 32.0)	24.0 (18.2 to 29.8)	21.0 (16.1 to 25.9)
Future perspective	13.0 (11.5 to 14.5)	25.2 (21.7 to 28.7)	25.1 (20.5 to 29.8)
Body image	20.2 (16.4 to 24.0)	34.6 (25.9 to 43.4)	27.9 (18.4 to 37.3)
BPI-SF, mean (95% CI)			
Pain severity	2.9 (2.6 to 3.2)	3.5 (2.7 to 4.2)	3.1 (2.4 to 3.8)
Pain interference	2.7 (2.3 to 3.1)	4.0 (3.1 to 4.9)	3.5 (2.5 to 4.5)
S-LANSS			
Neuropathic pain (S-LANSS \geq 12)			
Yes	15 (7.0)	14 (29.8)	10 (22.2)
No	155 (72.1)	28 (53.2)	26 (57.8)
Missing	45 (20.9)	8 (17.0)	9 (20.0)

NOTE. Data are No. (%) unless otherwise indicated.

Abbreviations: BPI-SF, Brief Pain Inventory (Short Form); ECOG, Eastern Cooperative Oncology Group; EORTC, European Organisation for Research and Treatment of Cancer; GHS, Global health status; Ig, immunoglobulin; NTC, nontransplantation consolidation; QLQ-C30, core 30-question quality of life questionnaire; QLQ-MY20, myeloma-specific 20-question quality of life questionnaire; QoL, quality of life; sASCT, salvage autologous stem-cell transplantation; S-LANSS, Leeds Assessment of Neuropathic Symptoms and Signs (Self-Assessment); TTP, time to progression.

*Higher stage indicates more severe disease.

†Percentage expressed as the proportion detected among those tested

longer active and after systemic anticancer treatments have ceased.^{11,28,29} This trial provides the most comprehensive picture of PROs before, immediately after, and for a substantial time after sASCT.

Several studies have sought to describe the process of MM treatment, including adverse effects of ASCT in terms of PROs and overall QoL. Morbidity during ASCT is high, with mucositis, emesis, and complications of bone marrow depletion and sepsis. Many patients find this period acutely distressing and may display long-term psychological changes. Sherman et al¹⁴ assessed a sample of 94 patients undergoing ASCT using the Functional Assessment of

Cancer Therapy–Bone Marrow Transplant (FACT-BMT) and symptom scales. They found that levels of physical and functioning well-being were already low, and fatigue, anxiety, and depression pain were prevalent at the pre-transplantation assessment. After ASCT, there was a worsening of transplantation-related concerns, depression, and life satisfaction. Pain and physical functioning did not deteriorate. Older patients were no more compromised than younger ones, confirmed in another study of mixed hematologic malignancies.¹⁵

Jim et al²³ described the QoL effects of ASCT in MM in a sample of 701 participants in the Blood and Bone Marrow

TABLE 2. Mean EORTC QLQ-C30 and EORTC QLQ-MY20 Scores Adjusted for Random Assignment Baseline From Multilevel Repeated Measures Model: 100 Days After Random Assignment
 6 Months After Random Assignment

Measure	100 Days After Random Assignment			6 Months After Random Assignment				
	No.	sASCT	NTC	Difference	No.	sASCT	NTC	Difference
EORTC QLQ-C30 functional domain scores, mean (95% CI)								
Global health status/QoL	78	55.9 (49.61 to 62.11)	65.1 (58.68 to 71.52)	9.2 (0.16 to 18.31)	75	66.8 (61.32 to 72.27)	71.6 (65.37 to 77.75)	4.8 (-3.58 to 13.11)
Physical functioning	82	66.1 (61.32 to 70.95)	71.7 (66.60 to 76.72)	5.5 (-1.50 to 12.55)	77	70.2 (65.77 to 74.66)	73.4 (68.31 to 78.59)	3.2 (-3.60 to 10.06)
Role functioning	82	51.2 (43.65 to 58.69)	62.4 (54.48 to 70.29)	11.2 (0.15 to 22.29)	77	63.2 (55.66 to 70.67)	67.8 (59.11 to 76.49)	4.6 (-6.98 to 16.24)
Cognitive functioning	78	80.0 (74.85 to 85.15)	85.1 (79.81 to 90.37)	5.1 (-2.31 to 12.49)	75	83.1 (78.36 to 87.78)	80.1 (74.81 to 85.46)	-2.9 (-10.10 to 4.24)
Emotional functioning	77	81.1 (75.72 to 86.40)	81.4 (76.01 to 86.83)	0.4 (-7.36 to 8.07)	74	84.3 (79.50 to 89.20)	81.1 (75.65 to 86.48)	-3.3 (-10.61 to 4.04)
Social functioning	78	59.0 (52.34 to 65.58)	63.4 (56.58 to 70.17)	4.4 (-5.23 to 14.05)	74	67.9 (60.42 to 75.45)	68.6 (60.22 to 77.03)	0.7 (-10.77 to 12.15)
EORTC QLQ-C30 symptom domain scores, mean (95% CI)								
Fatigue	82	44.5 (37.72 to 51.21)	37.0 (29.92 to 44.11)	-7.4 (-17.41 to 2.51)	77	33.0 (26.53 to 39.54)	30.9 (23.33 to 38.41)	-2.2 (-12.26 to 7.93)
Pain	82	37.6 (30.02 to 45.13)	31.2 (23.29 to 39.16)	-6.3 (-17.37 to 4.68)	77	35.5 (28.78 to 42.20)	27.9 (20.18 to 35.69)	-7.6 (-17.82 to 2.71)
Nausea/vomiting	81	10.5 (4.53 to 16.55)	11.7 (5.48 to 17.96)	1.2 (-7.49 to 9.85)	76	3.2 (0.19 to 6.13)	1.9 (-1.45 to 5.34)	-1.2 (-5.73 to 3.31)
Appetite loss	81	20.1 (12.54 to 27.69)	18.5 (10.65 to 26.37)	-1.6 (-12.59 to 9.39)	76	10.5 (5.38 to 15.60)	5.5 (-0.32 to 11.36)	-5.0 (-12.77 to 2.82)
Constipation	82	7.3 (1.14 to 13.38)	15.1 (8.65 to 21.50)	7.8 (-1.07 to 16.71)	77	7.6 (3.21 to 11.94)	3.0 (-2.01 to 8.08)	-4.5 (-11.22 to 2.15)
Diarrhea	78	13.6 (7.20 to 19.91)	5.9 (-0.62 to 12.43)	-7.6 (-16.83 to 1.53)	75	15.8 (8.53 to 22.99)	8.2 (0.05 to 16.39)	-7.5 (-18.54 to 3.46)
Insomnia	82	23.9 (16.85 to 30.88)	26.7 (19.31 to 34.04)	2.8 (-7.36 to 12.99)	77	18.3 (12.36 to 24.17)	22.1 (15.29 to 28.94)	3.9 (-5.17 to 12.88)
Dyspnea	82	22.7 (15.83 to 29.64)	18.5 (11.26 to 25.79)	-4.2 (-14.42 to 5.99)	76	16.7 (10.53 to 22.94)	19.6 (12.50 to 26.73)	2.9 (-6.74 to 12.50)
Financial problems	78	20.0 (13.62 to 26.29)	22.0 (15.48 to 28.47)	2.0 (-7.06 to 11.10)	74	19.3 (12.39 to 26.27)	23.5 (15.72 to 31.20)	4.1 (-6.29 to 14.55)
EORTC QLQ-MY20 scores, mean (95% CI)								
Future perspective worries	80	40.0 (34.46 to 45.45)	37.5 (31.85 to 43.12)	-2.5 (-10.41 to 5.47)	73	36.1 (30.60 to 41.68)	34.0 (27.86 to 40.08)	-2.2 (-10.50 to 6.15)
Disease symptoms	81	20.6 (16.62 to 24.58)	19.3 (15.09 to 23.55)	-1.3 (-7.09 to 4.54)	74	22.5 (18.34 to 26.75)	22.0 (17.08 to 26.98)	-0.5 (-7.01 to 5.98)
Side effects of treatment	80	25.6 (21.54 to 29.68)	18.0 (13.76 to 22.32)	-7.6 (-13.5 to -1.66)	73	19.3 (16.08 to 22.57)	13.4 (9.62 to 17.18)	-5.9 (-10.91 to -0.94)
Body image loss	80	35.6 (27.92 to 43.34)	28.4 (20.45 to 36.26)	-7.3 (-18.37 to 3.81)	73	26.2 (18.53 to 33.87)	23.8 (15.33 to 32.27)	-2.4 (-14.00 to 9.20)
BPI-SF, mean (95% CI)								
Pain interference	51	4.1 (3.35 to 4.90)	3.0 (2.11 to 3.89)	-1.1 (-2.27 to 0.02)	53	4.1 (3.38 to 4.79)	2.9 (2.06 to 3.68)	-1.2 (-2.27 to -0.16)

NOTE. Global health status/QoL-social functioning: higher score represents better QoL/functioning; fatigue-body image loss: higher score represents worse symptoms/QoL; pain severity-pain right now: higher score represents worse severity pain; Pain interference: higher score represents worse interference.

Abbreviations: BPI-SF, Brief Pain Inventory (Short Form); EORTC, European Organisation for Research and Treatment of Cancer; NTC, nontransplantation consolidation; QoL, quality of life; sASCT, salvage autologous stem-cell transplantation.

TABLE 3. Mean EORTC QLQ-C30 and EORTC QLQ-MY20 Scores Adjusted for Random Assignment Baseline From Multilevel Repeated Measures Model: 1 Year After Random Assignment
2 Years After Random Assignment

Measure	1 Year After Random Assignment			2 Years After Random Assignment			Difference
	No.	sASCT	NTC	No.	sASCT	NTC	
EORTC QLQ-C30 functional domain scores, mean (95% CI)							
Global health status/QoL	59	66.7 (60.02 to 73.42)	65.8 (57.12 to 74.52)	32	74.8 (67.34 to 82.24)	71.5 (58.56 to 84.36)	-3.3 (-18.22 to 11.57)
Physical functioning	60	71.2 (65.72 to 76.62)	74.6 (67.47 to 81.82)	32	74.3 (67.71 to 80.82)	69.7 (58.34 to 81.06)	-4.6 (-17.68 to 8.55)
Role functioning	60	66.3 (57.20 to 75.31)	65.9 (53.91 to 77.82)	32	69.9 (58.91 to 80.97)	71.4 (52.26 to 90.60)	1.5 (-20.68 to 23.67)
Cognitive functioning	59	83.5 (78.53 to 88.54)	76.9 (70.44 to 83.43)	32	83.0 (76.20 to 89.71)	74.1 (62.33 to 85.79)	-8.9 (-22.46 to 4.67)
Emotional functioning	59	81.9 (75.68 to 88.03)	78.4 (70.36 to 86.39)	32	82.8 (75.33 to 90.34)	80.3 (67.13 to 93.50)	-2.5 (-17.85 to 12.81)
Social functioning	59	72.5 (64.93 to 80.00)	67.5 (57.73 to 77.31)	32	72.9 (62.26 to 83.45)	60.6 (42.24 to 78.98)	-12.2 (-33.47 to 8.98)
EORTC QLQ-C30 symptom domain scores, mean (95% CI)							
Fatigue	60	34.5 (27.66 to 41.40)	33.8 (24.74 to 42.85)	32	31.0 (22.01 to 40.03)	29.2 (13.55 to 44.80)	-1.8 (-19.90 to 16.21)
Pain	60	33.4 (25.53 to 41.28)	27.9 (17.55 to 38.26)	32	25.5 (17.01 to 34.00)	25.6 (10.66 to 40.50)	0.1 (-17.26 to 17.42)
Nausea/vomiting	60	4.8 (2.02 to 7.58)	1.6 (-2.11 to 5.21)	32	1.8 (-0.33 to 4.01)	2.8 (-0.99 to 6.61)	1.0 (-3.44 to 5.38)
Appetite loss	60	9.8 (2.29 to 17.30)	14.9 (4.99 to 24.80)	31	3.1 (-0.43 to 6.57)	-0.5 (-6.58 to 5.59)	-3.6 (-10.72 to 3.59)
Constipation	59	11.7 (5.22 to 18.15)	3.1 (-5.32 to 11.46)	32	8.3 (-0.67 to 17.25)	4.3 (-11.21 to 19.83)	-4.0 (-21.90 to 13.94)
Diarrhea	59	8.4 (1.70 to 15.12)	13.1 (4.39 to 21.87)	32	5.4 (-0.75 to 11.51)	4.7 (-5.98 to 15.39)	-0.7 (-13.04 to 11.70)
Insomnia	60	20.2 (11.93 to 28.48)	22.7 (11.77 to 33.56)	31	15.9 (7.05 to 24.69)	16.9 (1.87 to 31.87)	1.0 (-16.44 to 18.43)
Dyspnea	60	18.7 (11.02 to 26.40)	25.3 (15.06 to 35.46)	32	20.1 (9.22 to 30.93)	31.4 (12.60 to 50.29)	11.4 (-10.42 to 33.16)
Financial problems	59	19.3 (11.49 to 27.04)	23.7 (13.58 to 33.74)	32	17.1 (9.67 to 24.63)	31.9 (18.66 to 45.11)	14.7 (-0.69 to 30.17)
EORTC QLQ-MY20 scores, mean (95% CI)							
Future perspective worries	58	37.8 (31.70 to 43.98)	32.3 (24.12 to 40.43)	30	34.8 (27.33 to 42.26)	32.1 (19.66 to 44.50)	-2.7 (-17.25 to 11.82)
Disease symptoms	59	23.3 (19.14 to 27.48)	22.1 (16.47 to 27.69)	30	20.5 (15.23 to 25.72)	19.2 (9.70 to 28.75)	-1.3 (-12.13 to 9.63)
Side effects of treatment	59	16.4 (12.65 to 20.25)	15.0 (9.91 to 20.17)	30	12.0 (8.15 to 15.90)	9.4 (2.36 to 16.51)	-2.6 (-10.69 to 5.52)
Body image loss	58	21.9 (12.22 to 31.57)	18.6 (5.67 to 31.47)	30	21.5 (12.60 to 30.31)	7.7 (-7.08 to 22.38)	-13.8 (-31.04 to 3.43)
BPI-SF, mean (95% CI)							
Pain interference	40	4.1 (3.37 to 4.75)	2.8 (2.05 to 3.65)	22	4.1 (3.42 to 4.82)	2.8 (1.99 to 3.60)	-1.3 (-2.38 to -0.27)

NOTE: Global health status/QoL-social functioning: higher score represents better QoL/functioning; fatigue-body image loss: higher score represents worse symptoms/QoL; pain severity-pain right now: higher score represents worse severity pain; pain interference: higher score represents worse interference.

Abbreviations: BPI-SF, Brief Pain Inventory (Short Form); EORTC, European Organisation for Research and Treatment of Cancer; NTC, nontransplantation consolidation; QLQ-C30, core 30-question quality of life questionnaire; QLQ-MY20, myeloma-specific 20-question quality of life questionnaire; QoL, quality of life; sASCT, salvage autologous stem-cell transplantation.

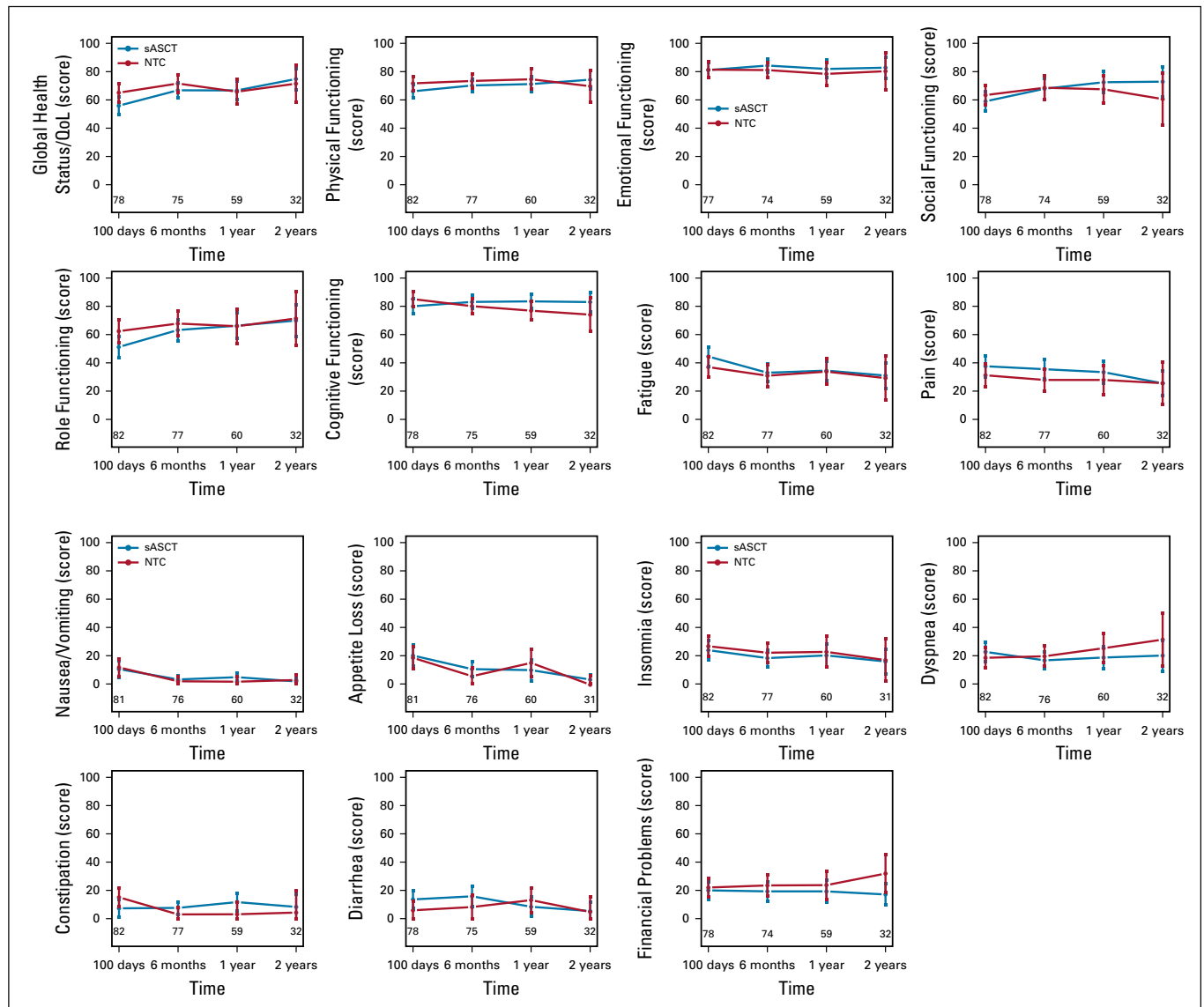


FIG 2. Baseline adjusted complete-case summary statistics (mean and 95% CI) scales from the European Organisation for Research and Treatment of Cancer (EORTC) QLQ-C30 questionnaire in randomly assigned patients. Global health status/quality of life (QoL)-social functioning: higher score represents better QoL/functioning; fatigue-body image loss: higher score represents worse symptoms/QoL. NTC, nontransplantation consolidation; sASCT, salvage autologous stem-cell transplantation.

Transplantation Clinical Trials Network 0902 trial. Using the Medical Outcomes Study Short Form (a generic instrument describing key dimensions of daily life), they were able to describe four trajectories for physical and mental aspects of QoL 100 days and 6 months after ASCT: low and stable; average and declining, then stable; higher than average and stable; and average and stable. They also concluded that attrition in post-ASCT studies could give rise to overestimates of QoL, but these are slight and consistent over time.

Novel agents in triplet combinations and their impact on PROs have recently been reported in relapsed patients for carfilzomib,³⁰ ixazomib,³¹ and elotuzumab,³² where 43% to 62% of patients in these studies were treated for first relapse. Baseline and long-term on-treatment scores for the

scales of key interest were similar to those observed in this study. Each novel agent improved PFS and showed no detrimental long-term impact on Global health status. These findings are important because others have shown that baseline psychosocial factors and QoL after induction and before ASCT, and the extent of treatment adverse effects during ASCT, could be predictive of post-transplantation adverse changes, including the finding of post-traumatic stress disorder in some patients.³³⁻³⁵ Most recently, O'Sullivan et al³⁶ confirmed that higher pre-transplantation pain predicted lower physical well-being and QoL. However, it should be noted that these studies included a variety of hematologic malignancies, both autograft and allograft, and a range of QoL measures.

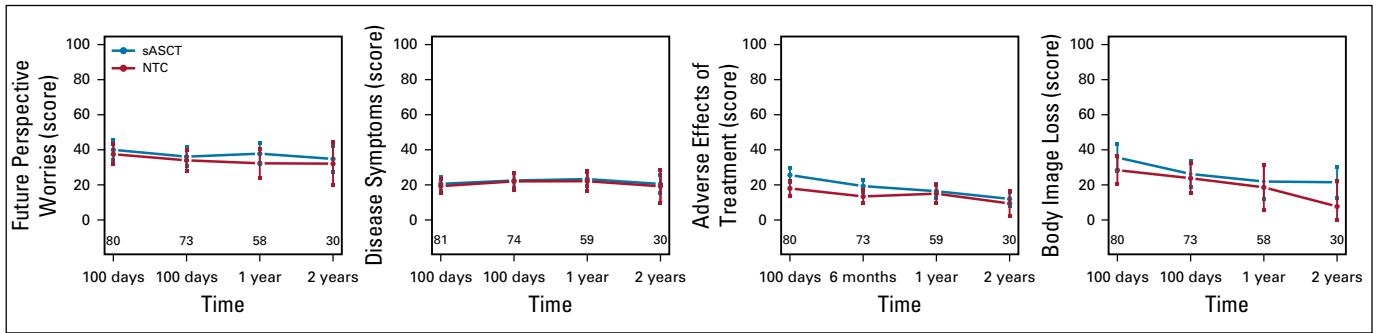


FIG 3. Baseline adjusted complete-case summary statistics (mean and 95% CI) scales from the European Organisation for Research and Treatment of Cancer (EORTC)-QLQ-MY20 questionnaire in randomly assigned patients. Future perspective worries-body image loss: higher score represents worse symptoms/quality of life (QoL). NTC, nontransplantation consolidation; sASCT, salvage autologous stem cell transplantation.

Although the questionnaire compliance was good, a limitation of this report is the low compliance at randomization baseline for all questionnaires, which leads to a subsample of data used in statistical models. In addition, there was an imbalance in the QoL scores at randomization baseline, with most scores better in the cyclophosphamide once-per-week group. There was no reason identified for the reduced compliance nor the baseline imbalance, with no significant differences identified in the time between trial registration, randomization, and questionnaire completion, or an imbalance in the same subsample of patients at trial registration or the end of reinduction. However, sensitivity analysis found no evidence to reject an assumption of missing at random, and multiple imputation provided broadly similar results, with potentially a nonsignificant difference in Global health status at 100 days post-ASCT.

We found that after entering the trial and after reinduction with bortezomib, doxorubicin, and dexamethasone, there were adverse changes in many aspects of QoL reflecting the intensity of treatment; these were of medium clinical significance only for Global health status, Fatigue, and Diarrhea. Importantly, psychological aspects were not compromised, because these have been shown to predict worse outcomes after hematopoietic stem-cell transplantation (HSCT) elsewhere.³³ In the early postrandomization period, patients who had undergone sASCT showed evidence of a small reduction in aspects of QoL. At 100 days, only Role functioning and Global health status were significantly higher in the NTC arm, with a magnitude indicating a small clinical difference. However, by 1 year after random assignment, this difference in Global health status was not observed.

There was evidence from the S-LANSS scale that the neuropathic component of pain was increased at 100 days after transplantation, but not later. Pain interference with daily living using the BPI-SF also increased in patients with sASCT and was seen until 2 years after random assignment. Drugs used in the ASCT process are not usually associated with direct neuropathic changes. However, systemic inflammation can give rise to increased pain

sensitivity, probably because of the effect of proinflammatory cytokines directly sensitizing peripheral pain pathways.³⁷ We have shown in another cohort study of patients with MM in remission that pain level as measured by BPI-SF was correlated with circulating interleukin-6.³⁸ In sASCT, the increased risk of systemic inflammation, including sepsis, could condition patients with existing neural damage to express more pain. Prolonged increased pain after HSCT has not been reported previously, possibly because others have not used a standardized pain measure such as BPI-SF, with its more sensitive, specific Pain interference scale.

The MY-20 module has a specific scale for detecting concerns about Side effects of treatment. Although this score was increased in patients randomly assigned to sASCT at 100 days and 6 months, the magnitude of this change was small and disappeared subsequently. Patients with sASCT who reported a lower (ie better) than median level of concern about adverse effects had significant TTP and OS advantages, even after adjustment in a multivariable Cox regression analysis. One likely interpretation of this in patients undergoing ASCT is that maximal efforts should be made to minimize the emergence of adverse effects of the procedure and to optimize their management. El-Jawahri et al³⁹ reported on the effect of a randomized trial of in-patient palliative care on QoL of patients with HSCT. This novel intervention led to a smaller increase in depression, lower anxiety, and less increase in symptom burden at 2 weeks post-HSCT and also a smaller reduction in QoL at 2 weeks, with higher QoL at 3 months.

This study is subject to several limitations, including an open-label design, in which lack of blinding could be relevant where subjective end points such as pain, other symptoms, treatment adverse effects, and QoL are of interest. We relied on patient reports using paper-based questionnaires. These are subject to problems related to adherence, especially when patients are experiencing periods of increased illness. We found the adherence and missing data rates to be comparable to other studies in this population, using the same or similar instruments. Attrition

rates are possibly a source of bias if they occur differentially in allocated treatment arms. It has been shown that attrition can overestimate QoL scores, but this effect can be consistent over time and between allocated treatment arms.²³ This is perhaps relevant in this study, where PROs were collected up until the time of disease progression.

The small and diminishing differences in Global health status and Side effects of treatment need to be considered alongside the results of Myeloma X, which showed a significant benefit of sASCT on OS. The benefits of sASCT should be considered alongside the relatively short-term negative effects on QoL and pain when making patient treatment decisions and further support the use of sASCT.

AFFILIATIONS

- ¹The University of Sheffield, Sheffield, United Kingdom
- ²Sheffield Teaching Hospitals NHS Foundation Trust, Sheffield, United Kingdom
- ³Pinderfields Hospital, Mid-Yorks NHS Trust, Wakefield, United Kingdom
- ⁴University of Leeds, Leeds, United Kingdom
- ⁵Nottingham City Hospitals, Nottingham City, United Kingdom
- ⁶Barts Health NHS Trust and The London NHS Trust, London, United Kingdom
- ⁷Ipswich Hospital NHS Trust, Ipswich, United Kingdom
- ⁸Manchester Royal Infirmary, Manchester, United Kingdom
- ⁹Royal Derby Hospital, Derby, United Kingdom
- ¹⁰Medway Maritime Hospital, Gillingham, United Kingdom
- ¹¹University Hospital Southampton NHS Foundation Trust, Southampton, United Kingdom
- ¹²University College Hospital, London, United Kingdom
- ¹³The Christie NHS Foundation Trust, Manchester, United Kingdom
- ¹⁴Plymouth Hospitals Trust, Plymouth, United Kingdom
- ¹⁵University Hospitals Bristol NHS Trust, Bristol, United Kingdom
- ¹⁶University Hospitals Birmingham NHS Foundation Trust, Birmingham, United Kingdom
- ¹⁷Queen's University, Belfast, United Kingdom

CORRESPONDING AUTHOR

Gordon Cook, MD, PhD, Haematology and Myeloma Studies, University of Leeds, St James's University Hospital, Leeds, LS9 7TF, United Kingdom; Twitter: @ProfBigG, @LeedsCTRU; e-mail: g.cook@leeds.ac.uk.

PRIOR PRESENTATION

Presented in part as a poster at the American Society of Hematology Annual Meeting, Orlando FL, December 5-8, 2015.

SUPPORT

Supported by Cancer Research UK (CRUK/06/018), Janssen-Cilag, and Chugai Pharma UK. The industry partners had no part in the design, performance, or analysis of the study.

REFERENCES

1. Attal M, Harousseau JL: Role of autologous stem-cell transplantation in multiple myeloma. *Best Pract Res Clin Haematol* 20:747-759, 2007
2. Cavo M, Tacchetti P, Patriarca F, et al: Bortezomib with thalidomide plus dexamethasone compared with thalidomide plus dexamethasone as induction therapy before, and consolidation therapy after, double autologous stem-cell transplantation in newly diagnosed multiple myeloma: A randomised phase 3 study. *Lancet* 376:2075-2085, 2010
3. Sonneveld P, Schmidt-Wolf IG, van der Holt B, et al: Bortezomib induction and maintenance treatment in patients with newly diagnosed multiple myeloma: Results of the randomized phase III HOVON-65/ GMMG-HD4 trial. *J Clin Oncol* 30:2946-2955, 2012
4. McCarthy PL, Owzar K, Hofmeister CC, et al: Lenalidomide after stem-cell transplantation for multiple myeloma. *N Engl J Med* 366:1770-1781, 2012
5. Cook G, Liakopoulou E, Pearce R, et al: Factors influencing the outcome of a second autologous stem cell transplant (ASCT) in relapsed multiple myeloma: A study from the British Society of Blood and Marrow Transplantation Registry. *Biol Blood Marrow Transplant* 17:1638-1645, 2011
6. Giralt S, Garderet L, Durie B, et al: American Society of Blood and Marrow Transplantation, European Society of Blood and Marrow Transplantation, Blood and Marrow Transplant Clinical Trials Network, and International Myeloma Working Group Consensus Conference on Salvage Hematopoietic Cell Transplantation in Patients With Relapsed Multiple Myeloma. *Biol Blood Marrow Transplant* 21:2039-2051, 2015
7. Gonsalves WL, Kumar S, Lacy M, et al: Second autologous stem cell transplantation as a strategy for management of relapsed multiple myeloma. *J Clin Oncol* 30, 2012 (abstr 8092)
8. Michaelis LC, Saad A, Zhong X, et al: Salvage second hematopoietic cell transplantation in myeloma. *Biol Blood Marrow Transplant* 19:760-766, 2013

AUTHORS' DISCLOSURES OF POTENTIAL CONFLICTS OF INTEREST AND DATA AVAILABILITY STATEMENT

Disclosures provided by the authors and data availability statement (if applicable) are available with this article at DOI <https://doi.org/10.1200/JCO.18.01006>.

AUTHOR CONTRIBUTIONS

Conception and design: Sam H. Ahmedzai, John A. Snowden, David Allan Cairns, Julia M. Brown, Treen C.M. Morris, Gordon Cook

Administrative support: Gordon Cook, Anna Hockaday

Provision of study materials or patients: John A. Snowden, Cathy Williams, Jamie D. Cavenagh, Debo Ademokun, David Allotey, Matthew Jenner, Jim Cavet, Hannah Hunter, Jennifer M. Bird, Christopher Parrish

Collection and assembly of data: John A. Snowden, David Allan Cairns, Cathy Williams, Anna Hockaday, Jamie D. Cavenagh, Eleni Tholouli, David Allotey, Vijay Dhanapal, Kwee Yong, Hannah Hunter, Guy Pratt, Christopher Parrish, Gordon Cook

Data analysis and interpretation: Sam H. Ahmedzai, John A. Snowden, Andrew John Ashcroft, David Allan Cairns, Debo Ademokun, Matthew Jenner, Jim Cavet, Jennifer M. Bird, Christopher Parrish, Julia M. Brown, Treen C.M. Morris, Gordon Cook

Manuscript writing: All authors

Final approval of manuscript: All authors

Accountable for all aspects of the work: All authors

ACKNOWLEDGMENT

We thank all the patients who took part in the study, as well as all the principal investigators and other study staff at the more than 50 recruiting centers throughout the United Kingdom. The study was coordinated by the Clinical Trials Research Unit, University of Leeds. We are grateful to all current and past members of the Clinical Trials Research Unit staff for their hard work and commitment to this study.

9. Cook G, Williams C, Brown JM, et al: High-dose chemotherapy plus autologous stem-cell transplantation as consolidation therapy in patients with relapsed multiple myeloma after previous autologous stem-cell transplantation (NCRI Myeloma X Relapse [Intensive trial]): A randomised, open-label, phase 3 trial. *Lancet Oncol* 15:874-885, 2014 [Erratum: *Lancet Oncol* 15:e365, 2014]
10. Cook G, Ashcroft AJ, Cairns DA, et al: The effect of salvage autologous stem-cell transplantation on overall survival in patients with relapsed multiple myeloma (final results from BSBMT/UKMF Myeloma X Relapse [Intensive]): A randomised, open-label, phase 3 trial. *Lancet Haematol* 3:e340-e351, 2016
11. Snowden JA, Ahmedzai SH, Ashcroft J, et al: Guidelines for supportive care in multiple myeloma 2011. *Br J Haematol* 154:76-103, 2011
12. Snowden JA, Greenfield DM, Bird JM, et al: Guidelines for screening and management of late and long-term consequences of myeloma and its treatment. *Br J Haematol* 176:888-907, 2017
13. Anderson KO, Giralto SA, Mendoza TR, et al: Symptom burden in patients undergoing autologous stem-cell transplantation. *Bone Marrow Transplant* 39:759-766, 2007
14. Sherman AC, Simonton S, Latif U, et al: Changes in quality-of-life and psychosocial adjustment among multiple myeloma patients treated with high-dose melphalan and autologous stem cell transplantation. *Biol Blood Marrow Transplant* 15:12-20, 2009
15. Beijers AJM, Vreugdenhil G, Oerlemans S, et al: Chemotherapy-induced neuropathy in multiple myeloma: Influence on quality of life and development of a questionnaire to compose common toxicity criteria grading for use in daily clinical practice. *Support Care Cancer* 24:2411-2420, 2016
16. Nielsen LK, Jarden M, Andersen CL, et al: A systematic review of health-related quality of life in longitudinal studies of myeloma patients. *Eur J Haematol* 99:3-17, 2017
17. Shaw BE, Lee SJ, Horowitz MM, et al: Can we agree on patient-reported outcome measures for assessing hematopoietic cell transplantation patients? A study from the CIBMTR and BMT CTN. *Bone Marrow Transplant* 51:1173-1179, 2016
18. Stewart AK, Dimopoulos MA, Masszi T, et al: Health-related quality-of-life results from the open-label, randomized, phase III ASPIRE trial evaluating carfilzomib, lenalidomide, and dexamethasone versus lenalidomide and dexamethasone in patients with relapsed multiple myeloma. *J Clin Oncol* 34:3921-3930, 2016
19. Garcia CM, Mumby PB, Thilges S, et al: Comparison of early quality of life outcomes in autologous and allogeneic transplant patients. *Bone Marrow Transplant* 47:1577-1582, 2012
20. Grulke N, Albani C, Bailer H: Quality of life in patients before and after hematopoietic stem cell transplantation measured with the European Organization for Research and Treatment of Cancer (EORTC) Quality of Life Core Questionnaire QLQ-C30. *Bone Marrow Transplant* 47:473-482, 2012
21. Hamilton BK, Law AD, Rybicki L, et al: Prognostic significance of pre-transplant quality of life in allogeneic hematopoietic cell transplantation recipients. *Bone Marrow Transplant* 50:1235-1240, 2015
22. Hjermsstad MJ, Knobel H, Brinch L, et al: A prospective study of health-related quality of life, fatigue, anxiety and depression 3-5 years after stem cell transplantation. *Bone Marrow Transplant* 34:257-266, 2004
23. Jim HSL, Sutton SK, Small BJ, et al: Trajectories of quality of life after hematopoietic cell transplantation: Secondary analysis of Blood and Marrow Transplant Clinical Trials Network 0902 data. *Biol Blood Marrow Transplant* 22:2077-2083, 2016
24. Rajkumar SV, Harousseau JL, Durie B, et al: Consensus recommendations for the uniform reporting of clinical trials: Report of the International Myeloma Workshop Consensus Panel 1. *Blood* 117:4691-4695, 2011
25. Cleeland CS, Gonin R, Hatfield AK, et al: Pain and its treatment in outpatients with metastatic cancer. *N Engl J Med* 330:592-596, 1994
26. Bennett MI, Attal N, Backonja MM, et al: Using screening tools to identify neuropathic pain. *Pain* 127:199-203, 2007
27. Cocks K, King MT, Vellkova G, et al: Evidence-based guidelines for interpreting change scores for the European Organisation for the Research and Treatment of Cancer Quality of Life Questionnaire Core 30. *Eur J Cancer* 48:1713-1721, 2012
28. (NICE) NifHaCE: NICE guideline [NG35]: Myeloma: diagnosis and management, National Institute for Health and Care Excellence (NICE), National Collaborating Centre for Cancer, London, United Kingdom, 2016
29. Laubach J, Garderet L, Mahindra A, et al: Management of relapsed multiple myeloma: Recommendations of the International Myeloma Working Group. *Leukemia* 30:1005-1017, 2016
30. Stewart AK, Dimopoulos MA, Masszi T, et al: Health-related quality-of-life results from the open-label, randomized, phase III ASPIRE trial evaluating carfilzomib, lenalidomide, and dexamethasone versus lenalidomide and dexamethasone in patients with relapsed multiple myeloma. *J Clin Oncol* 34:3921-3930, 2016
31. Leleu X, Masszi T, Bahlis NJ, et al: Patient-reported health-related quality of life from the phase III TOURMALINE-MM1 study of ixazomib-lenalidomide-dexamethasone versus placebo-lenalidomide-dexamethasone in relapsed/refractory multiple myeloma. *Am J Hematol* 93:985-993, 2018
32. Cella D, McKendrick J, Kudlac A, et al: Impact of elotuzumab treatment on pain and health-related quality of life in patients with relapsed or refractory multiple myeloma: Results from the ELOQUENT-2 study. *Ann Hematol* 97:2455-2463, 2018
33. Braamse AM, Gerrits MM, van Meijel B, et al: Predictors of health-related quality of life in patients treated with auto- and allo-SCT for hematological malignancies. *Bone Marrow Transplant* 47:757-769, 2012
34. El-Jawahri AR, Vandusen HB, Traeger LN, et al: Quality of life and mood predict posttraumatic stress disorder after hematopoietic stem cell transplantation. *Cancer* 122:806-812, 2016
35. Kroemeke A, Sobczyk-Kruszelnicka M, Kwissa-Gajewska Z: Everyday life following hematopoietic stem cell transplantation: decline in physical symptoms within the first month and change-related predictors. *Qual Life Res* 27:125-135, 2018
36. O'Sullivan ML, Shelby RA, Dorfman CS, et al: The effect of pre-transplant pain and chronic disease self-efficacy on quality of life domains in the year following hematopoietic stem cell transplantation. *Support Care Cancer* 26:1243-1252, 2018
37. Verri WA Jr, Cunha TM, Parada CA, et al: Hypnociceptive role of cytokines and chemokines: Targets for analgesic drug development? *Pharmacol Ther* 112:116-138, 2006
38. Boland E, Eiser C, Ezaydi Y, et al: Living with advanced but stable multiple myeloma: A study of the symptom burden and cumulative effects of disease and intensive (hematopoietic stem cell transplant-based) treatment on health-related quality of life. *J Pain Symptom Manage* 46:671-680, 2013
39. El-Jawahri AR, Traeger LN, Kuzmuk K, et al: Quality of life and mood of patients and family caregivers during hospitalization for hematopoietic stem cell transplantation. *Cancer* 121:951-959, 2015



AUTHORS' DISCLOSURES OF POTENTIAL CONFLICTS OF INTEREST**Patient-Reported Outcome Results From the Open-Label, Randomized Phase III Myeloma X Trial Evaluating Salvage Autologous Stem-Cell Transplantation in Relapsed Multiple Myeloma**

The following represents disclosure information provided by authors of this manuscript. All relationships are considered compensated. Relationships are self-held unless noted. I = Immediate Family Member, Inst = My Institution. Relationships may not relate to the subject matter of this manuscript. For more information about ASCO's conflict of interest policy, please refer to www.asco.org/rwc or ascopubs.org/jco/site/ifc.

Sam H. Ahmedzai

Honoraria: Mundipharma, Menarini, Kyowa Hakko Kirin
Consulting or Advisory Role: Grünenthal Group, Mundipharma, AstraZeneca
Research Funding: Grünenthal Group, Mundipharma
Travel, Accommodations, Expenses: Grünenthal Group, Mundipharma, AstraZeneca, Menarini

John A. Snowden

Consulting or Advisory Role: Kiadis Pharma
Speakers' Bureau: Janssen, Jazz Pharmaceuticals, Mallinckrodt, Actelion

Andrew John Ashcroft

Honoraria: Amgen, Janssen-Cilag, Amgen, Celgene, Janssen-Cilag, Takeda
Speakers' Bureau: Amgen, Janssen-Cilag
Travel, Accommodations, Expenses: Janssen-Cilag, Amgen

David Allan Cairns

Research Funding: Celgene (Inst), Merck Sharp & Dohme (Inst), Amgen (Inst), Takeda (Inst)

Cathy Williams

Honoraria: Janssen, Amgen, Takeda, Celgene
Consulting or Advisory Role: Janssen, Amgen, Takeda, Celgene
Travel, Accommodations, Expenses: Takeda

Anna Hockaday

Research Funding: Janssen-Cilag (Inst), Celgene (Inst), AbbVie (Inst)

James D. Cavenagh

Employment: GlaxoSmithKline (I)
Stock and Other Ownership Interests: GlaxoSmithKline (I)
Honoraria: Janssen-Cilag, Celgene, Takeda, Novartis, Amgen, AbbVie, Jazz Pharmaceuticals
Travel, Accommodations, Expenses: Takeda

Debo Ademokun

Stock and Other Ownership Interests: GlaxoSmithKline UK
Honoraria: Takeda
Travel, Accommodations, Expenses: Novartis

Eleni Tholouli

Consulting or Advisory Role: Novartis, Gilead Sciences, Daiichi Sankyo, Jazz Pharmaceuticals, MSD
Speakers' Bureau: Novartis, Kite/Gilead, Jazz Pharmaceuticals, Pfizer
Travel, Accommodations, Expenses: Jazz Pharmaceuticals, MSD

Matthew Jenner

Honoraria: Celgene, Janssen Oncology, Takeda
Consulting or Advisory Role: Celgene, Janssen Oncology, Takeda, AbbVie, Sanofi
Speakers' Bureau: Celgene, Takeda, Janssen Oncology, Amgen, Novartis Pharmaceuticals UK
Travel, Accommodations, Expenses: Takeda, Janssen Oncology

Kwee Yong

Honoraria: Amgen, Janssen-Cilag, Takeda
Consulting or Advisory Role: Amgen, Janssen-Cilag, Takeda
Speakers' Bureau: Takeda
Research Funding: Amgen, Autolus
Travel, Accommodations, Expenses: Takeda

Jim Cavet

Speakers' Bureau: Janssen, Takeda
Research Funding: Karyopharm Therapeutics, Janssen, Amgen, GlaxoSmithKline, Oncopeptides, Autolus
Travel, Accommodations, Expenses: Takeda

Hannah Hunter

Honoraria: Celgene, Jazz Pharmaceuticals, Novartis Pharmaceuticals UK
Speakers' Bureau: Jazz Pharmaceuticals
Travel, Accommodations, Expenses: Jazz Pharmaceuticals, Celgene

Jennifer M. Bird

Honoraria: Takeda
Consulting or Advisory Role: Pfizer, PRMA Consulting
Travel, Accommodations, Expenses: Celgene, Takeda

Guy Pratt

Honoraria: Janssen Oncology, Celgene, Amgen, Takeda, Gilead Sciences, Binding Site

Christopher Parrish

Speakers' Bureau: Jazz Pharmaceuticals, Amgen, Janssen, AbbVie
Travel, Accommodations, Expenses: Jazz Pharmaceuticals, Amgen, Janssen, AbbVie

Julia M. Brown

Research Funding: Roche

Treen C.M. Morris

Travel, Accommodations, Expenses: Janssen

Gordon Cook

Honoraria: Takeda, Janssen-Cilag, Celgene, Karyopharm Therapeutics
Speakers' Bureau: Takeda, Janssen-Cilag, Amgen, Jazz Pharmaceuticals
Research Funding: Takeda (Inst), Celgene (Inst)
Travel, Accommodations, Expenses: Takeda

No other potential conflicts of interest were reported.