



Wearn, A. R., Nurdal, V., Saunders-Jennings, E., Knight, M. J., Isotalus, H. K., Dillon, S., Tsivos, D., Kauppinen, R. A., & Coulthard, E. J. (2020). T2 heterogeneity: a novel marker of microstructural integrity associated with cognitive decline in people with mild cognitive impairment. *Alzheimer's Research and Therapy*, 12, Article 105 (2020) . <https://doi.org/10.1186/s13195-020-00672-9>

Publisher's PDF, also known as Version of record

License (if available):  
CC BY

Link to published version (if available):  
[10.1186/s13195-020-00672-9](https://doi.org/10.1186/s13195-020-00672-9)

[Link to publication record on the Bristol Research Portal](#)  
PDF-document

This is the final published version of the article (version of record). It first appeared online via BMC at <https://doi.org/10.1186/s13195-020-00672-9> . Please refer to any applicable terms of use of the publisher.

## University of Bristol – Bristol Research Portal

### General rights

This document is made available in accordance with publisher policies. Please cite only the published version using the reference above. Full terms of use are available: <http://www.bristol.ac.uk/red/research-policy/pure/user-guides/brp-terms/>

RESEARCH

Open Access



# T2 heterogeneity: a novel marker of microstructural integrity associated with cognitive decline in people with mild cognitive impairment

Alfie R. Wearn<sup>1,2\*</sup> , Volkan Nurdal<sup>1</sup>, Esther Saunders-Jennings<sup>1</sup>, Michael J. Knight<sup>3</sup>, Hanna K. Isotalus<sup>1</sup>, Serena Dillon<sup>1</sup>, Demitra Tsivos<sup>1</sup>, Risto A. Kauppinen<sup>3</sup> and Elizabeth J. Coulthard<sup>1,2</sup>

## Abstract

**Background:** Early Alzheimer's disease (AD) diagnosis is vital for development of disease-modifying therapies. Prior to significant brain tissue atrophy, several microstructural changes take place as a result of Alzheimer's pathology. These include deposition of amyloid, tau and iron, as well as altered water homeostasis in tissue and some cell death. T2 relaxation time, a quantitative MRI measure, is sensitive to these changes and may be a useful non-invasive, early marker of tissue integrity which could predict conversion to dementia. We propose that different microstructural changes affect T2 in opposing ways, such that average 'midpoint' measures of T2 are less sensitive than measuring distribution width (heterogeneity). T2 heterogeneity in the brain may present a sensitive early marker of AD pathology.

**Methods:** In this cohort study, we tested 97 healthy older controls, 49 people with mild cognitive impairment (MCI) and 10 with a clinical diagnosis of AD. All participants underwent structural MRI including a multi-echo sequence for quantitative T2 assessment. Cognitive change over 1 year was assessed in 20 participants with MCI. T2 distributions were modelled in the hippocampus and thalamus using log-logistic distribution giving measures of log-median value (midpoint;  $T2\mu$ ) and distribution width (heterogeneity;  $T2\sigma$ ).

**Results:** We show an increase in T2 heterogeneity ( $T2\sigma$ ;  $p < .0001$ ) in MCI compared to healthy controls, which was not seen with midpoint ( $T2\mu$ ;  $p = .149$ ) in the hippocampus and thalamus. Hippocampal T2 heterogeneity predicted cognitive decline over 1 year in MCI participants ( $p = .018$ ), but midpoint ( $p = .132$ ) and volume ( $p = .315$ ) did not. Age affects T2, but the effects described here are significant even after correcting for age.

**Conclusions:** We show that T2 heterogeneity can identify subtle changes in microstructural integrity of brain tissue in MCI and predict cognitive decline over a year. We describe a new model that considers the competing effects of factors that both increase and decrease T2. These two opposing forces suggest that previous conclusions based on T2 midpoint may have obscured the true potential of T2 as a marker of subtle neuropathology. We propose that T2 heterogeneity reflects microstructural integrity with potential to be a widely used early biomarker of conditions such as AD.

**Keywords:** Magnetic resonance imaging, Alzheimer's disease, Early diagnosis, Ageing, Hippocampus, T2 relaxometry

\* Correspondence: [Alfie.wearn@bristol.ac.uk](mailto:Alfie.wearn@bristol.ac.uk)

<sup>1</sup>Bristol Medical School, University of Bristol, Bristol, UK

<sup>2</sup>Institute of Clinical Neurosciences, North Bristol NHS Trust, Bristol, UK

Full list of author information is available at the end of the article



© The Author(s). 2020 **Open Access** This article is licensed under a Creative Commons Attribution 4.0 International License, which permits use, sharing, adaptation, distribution and reproduction in any medium or format, as long as you give appropriate credit to the original author(s) and the source, provide a link to the Creative Commons licence, and indicate if changes were made. The images or other third party material in this article are included in the article's Creative Commons licence, unless indicated otherwise in a credit line to the material. If material is not included in the article's Creative Commons licence and your intended use is not permitted by statutory regulation or exceeds the permitted use, you will need to obtain permission directly from the copyright holder. To view a copy of this licence, visit <http://creativecommons.org/licenses/by/4.0/>. The Creative Commons Public Domain Dedication waiver (<http://creativecommons.org/publicdomain/zero/1.0/>) applies to the data made available in this article, unless otherwise stated in a credit line to the data.

## Introduction

Alzheimer's disease treatments and therapies that stop or slow down neuropathology will be most effective if administered as early as possible; before significant neurodegeneration has occurred. Accurate early Alzheimer's disease diagnosis is vital to identify appropriate clinical trial study groups of 'at-risk' individuals to expedite development of new compounds [1, 2] and to target disease-modifying treatments when available.

Structural and quantitative MRI show promise in their ability to identify changes in the brain that indicate early Alzheimer's pathology. Measuring the volume of the hippocampus and entorhinal cortex has been shown to predict progression of mild cognitive impairment (MCI) to Alzheimer's disease [3–10]. Detectable change in volume is indicative of significant tissue loss, which is likely to be irreversible. As treatment with disease-modifying therapies would be optimal before such significant macrostructural change, we ask whether MRI could be used to identify microstructural changes that occur earlier in the disease-course, before significant volume loss.

Prior to significant loss of tissue volume, several microstructural changes take place as a result of Alzheimer's disease pathology—(i) oligomers and plaques of  $\beta$ -amyloid ( $A\beta$ ) and neurofibrillary tangles (NFTs) build up around the medial temporal lobe (MTL) and the thalamus [11–14], (ii) iron is elevated in the brains of people with MCI and Alzheimer's disease [15] and (iii) even small amounts of necrosis leading to breakdown of cell membranes and oedema will increase the motility of water within a given region. Increase in water motility is not necessarily specific to Alzheimer's disease and can occur in healthy ageing [16–18]. Accurately measuring such microstructural changes may allow identification of tissue that is at risk of degradation or has reduced functionality compared to a previous state.

T2 relaxometry is an MRI approach that may be able to report microstructural tissue integrity. Relaxation time is a measure, detectable by MRI, that describes the time taken for protons to return to a state of equilibrium following electromagnetic excitation. Specifically, T2 relaxation describes the transverse component of magnetisation. T2 relaxation time of biological tissue varies depending on its physical properties and its surrounding environment. It is primarily driven by water content and mobility and the presence of macromolecular structures and paramagnetic materials, e.g. iron [19–23]. For example, pure water will have a very long relaxation time, whereas in fatty substances, T2 will decay much quicker. T2 is therefore sensitive to microscopic and physico-chemical tissue properties that can change as a result of pathology. Previous research has shown that T2 relaxometry is independent of, and can provide distinct microstructural information to, diffusion tensor imaging metrics [24, 25].

Given that quantitative T2 can be easily measured on routine MRI scans, adding just a couple of minutes to standard T2-weighted structural scanning times, it has been previously explored as an early marker of Alzheimer's disease pathology. However, previous studies on the effect of Alzheimer's pathology on T2 in the human brain have yielded varied and sometimes contradictory results. Most studies describe a prolonged T2 in the hippocampus of those with Alzheimer's disease [26–30], whereas others find the opposite [31, 32] or no change at all [33] (see Tang et al. [34] for a comprehensive review). In two studies [26, 28], change in thalamic T2 was not associated with Alzheimer's pathology or cognitive impairment, but T2 increased with age [28]. In another study, Dawe et al. [30] found that Alzheimer's pathology was associated with decreased T2 within the thalamus.

These inconsistencies in human literature are not fully reflected in studies of transgenic rodent models of Alzheimer's disease, which consistently show a decrease in hippocampal T2 [34]. Inconsistencies within the human literature and between human and animal studies could be a consequence of the multiple pathological processes occurring in the human brain that have opposing effects, either shortening or lengthening T2. In contrast, mouse models are usually dominated by a single pathological process such as amyloid deposition.

Increased water content, such as that caused by increased cerebrospinal fluid (CSF), oedema or cell membrane damage, will prolong T2 [28]. Conversely, increase in iron [22] or in macromolecule-to-water ratio due to accumulation of high density protein aggregates, such as  $A\beta$ , shorten T2 [35]. Even in early stages of the pathological progression of Alzheimer's disease within the brain, factors which cause T2 to either increase or decrease are both occurring in early-affected regions such as the hippocampus and the thalamus [11, 14, 36, 37]. Either effect may be more or less dominant in clusters throughout these regions. Averaging across the entire region could therefore yield, on average, a net change in T2 of zero. A change in the average value of T2 would only come about if T2-shortening factors dominate over T2-prolonging factors or vice-versa, which may not be the case in the earliest stages of the disease. Rather, an increased width of the distribution of T2 (T2 heterogeneity) may better reflect subtle changes in microstructural integrity such as those present in the early stages of Alzheimer's disease.

T2 heterogeneity as a marker of tissue integrity is a novel measure with only two known previous studies of its utility. One demonstrates that T2 heterogeneity is a useful measure in accurately determining stroke onset time in an animal model [38]. The other presented pilot data from our group, concluding that T2 heterogeneity

can improve accuracy in distinguishing between healthy controls, those with MCI and Alzheimer's disease patients, and was a more promising measure than volumetry or diffusion tensor imaging [25].

In this study, we aimed to assess the use of the width of the distribution of T2 as a marker of within-individual tissue heterogeneity and microstructural integrity. We measure T2 heterogeneity in a group of people with MCI. Studies report a variable annual conversion rate of MCI to AD (mostly ranging from 10 to 15% for studies in clinical settings [39, 40]). We hypothesised that MCI patients with the greatest T2 heterogeneity would have the greatest risk of incipient dementia and therefore experience the greatest cognitive decline over a year [39, 40]. To be clear, we expect the distribution width to increase on a patient-by-patient basis. We are not discussing heterogeneity across the MCI group, which would be explained by the variety of MCI aetiologies between individuals.

We expand previous work by describing a model of T2 dynamics through the course of Alzheimer's disease, in comparison to healthy ageing, with a view to creating a practical biomarker which may identify neuropathology prior to significant tissue atrophy. We also report volumetry data, as this is the current standard for assessing structural change in MCI and AD.

## Methods

The analyses in this paper combine data from two prospective longitudinal studies similar in cohort demographics and study design. No participants took part in both studies. Both studies are detailed in the following section. Where data collected are not identical between cohorts, we have normalised equivalent metrics within cohort and combined data after normalisation.

### Participants

Participants fulfilling the Petersen criteria [41] for diagnosis of MCI were recruited to both studies (study 1:  $n = 30$ ; study 2:  $n = 29$ ). Healthy older people (HC) with no history of memory problems or significant neurological disorders were recruited as controls to each study (study 1:  $n = 61$ ; study 2:  $n = 56$ ). All healthy controls had Montreal Cognitive Assessment (MoCA)  $> 26$  (study 1) or Addenbrookes Cognitive Examination 3 (ACE-III)  $> 88$  (study 2). Seven participants originally recruited as healthy controls in study 1 were found to have MoCA scores of  $< 26$ , so they were reclassified as MCI (given the high sensitivity and specificity of the MoCA for detecting MCI at this threshold; 90% and 100%, respectively [42]). Study 1 also included 10 patients with diagnoses of Alzheimer's disease (AD) who retained capacity to consent. AD diagnoses were made according to standard clinical criteria [43]. These sample sizes are in-

line with similar studies on brain structure abnormalities in MCI and Alzheimer's disease and are sufficient to observe significant differences in hippocampal volume. All participants underwent a battery of neuropsychological tests specific to each study, the details of which are described in [supplementary information](#).

Subjects for both studies were recruited from local GP surgeries and memory clinics in the Bristol area (having received MCI diagnoses or reported memory problems), Join Dementia Research, Avon and Wiltshire Mental Health Partnership's Everyone Included system, an in-house database of volunteers, replies to poster adverts or through word of mouth. All patients provided informed written consent prior to testing as according to the Declaration of Helsinki. Ethical approval was given by Frenchay NHS Research Ethics Committee.

The current analyses included all participants who had volumetry and T2 relaxometry data for both hippocampal subfields and thalamus, study 1  $n = 90$  (50 HC, 30 MCI, 10 AD), study 2  $n = 66$  (47 HC, 19 MCI). See Table 1 for demographic details (Supplementary Tables 1 and 2 show demographic, neuropsychology and MRI data for each study cohort separately).

A total of 20 MCI participants were followed-up after 1 year (10 from each study). Cognitive function was tested at baseline and follow-up using the MoCA in study 1 and the ACE-III in study 2. We assessed cognitive decline as an overall change in this cognitive test score over the year follow-up period. Although some MCI patients may have converted to dementia over the year, conversion to dementia was never a formal outcome of this study. The reason for this is that we recruited from a range of sites with highly variable clinical follow-up periods for MCI patients—indeed, some sites discharge MCI patients without a planned follow-up. This led to our decision to use our own measure of cognitive change as the outcome of interest in this study.

### Imaging parameters

Scans for both studies were acquired at CRICBristol, University of Bristol, UK, on the same Siemens Magnetom Skyra 3T system equipped with a parallel transmit body coil and a 32-channel head receiver array coil. The two studies used similar, but slightly different scanning protocols.

### Study 1

This protocol has been previously described by Knight et al. [25]. The imaging protocol included a 3D T1-weighted whole-brain magnetization prepared rapid acquisition gradient-echo (MPRAGE) and 2D multi-contrast multi-spin-echo (CPMG).

MPRAGE: Coronal, whole-brain, repetition time (TR) 2200 ms, echo time (TE) 2.42 ms, inversion time (TI)

**Table 1** Participant demographics

	Group			
	HC	MCI	AD	Total
<i>N</i> (male to female)	97 (46:51)	49 (27:22)	10 (2:8)	156 (75:81)
Age (years)	69.3 ± 8.58	72.2 ± 9.03	77.9 ± 9.94	70.7 ± 9.05
YOE	15.8 ± 3.16	14.2 ± 2.81	13.1 ± 2.60	15.1 ± 3.13
Cognitive score (normalised to HC)	0.00 ± 1.00	-4.08 ± 2.09	-8.50 ± 3.15	-1.83 ± 3.02

Data show mean ± standard deviation, combined for studies 1 and 2. Cognitive score is calculated as a Z score relative to the healthy control group of each study, separately, as different cognitive tests were used (study 1: MoCA; study 2: ACE-III). For this reason, the HC group by definition has a mean ± SD of 0 ± 1. HC healthy control, MCI mild cognitive impairment, AD Alzheimer's disease, YOE years of education

900 ms, flip angle 9°, acquired resolution 0.68 × 0.68 × 1.60 mm, acquired matrix size 152 × 320 × 144, reconstructed resolution 0.34 × 0.34 × 1.60 mm (after twofold interpolation in-plane by zero-filling in *k*-space), reconstructed matrix size 540 × 640 × 144, GRAPPA factor 2. Acquisition time: 5:25 min.

CPMG: Coronal, TR 4500 ms, TE 12 ms, number of echoes 10, echo spacing 12 ms, acquired resolution 0.68 × 0.68 × 1.7 mm inclusive of 15% slice gap, acquired matrix size 152 × 320, 34 slices, interleaved slice order, reconstructed resolution 0.34 × 0.34 × 1.7 mm (after twofold interpolation in-plane by zero-filling in *k*-space, and inclusive of 15% slice gap), reconstructed matrix size 540 × 640, 34 slices, GRAPPA factor 2. Acquisition time: 11:07 min.

### Study 2

The imaging protocol included a 3D T1-weighted whole-brain MPRAGE and 2D multi-contrast turbo spin-echo (TSE).

MPRAGE: Sagittal, whole-brain, TR 2200 ms, TE 2.28 ms, TI 900 ms, flip angle 9°, FOV 220 × 220 × 179 mm, acquired resolution 0.86 × 0.86 × 0.86 mm, acquired matrix size 256 × 256 × 208. Acquisition time: 5:07 min.

Multi-contrast TSE: Coronal, TR 7500 ms, number of echoes: 3, TE 9.1, 72 and 136 ms, acquired resolution 0.69 × 0.69 × 1.5 mm, reconstructed resolution 0.34 × 0.34 × 1.5 mm (after 2-fold interpolation in-plane by zero-filling in *k*-space, and inclusive of 15% slice gap), GRAPPA factor 2, FOV 220 × 220 × 34, acquired matrix size 270 × 320 × 58. Acquisition time: 5:09 min.

CPMG and TSE scans were not 'whole-brain', their coverage only extending approx. 1 cm beyond anterior and posterior ends of the hippocampus. These scans were tilted such that the hippocampal body lay perpendicular to the slice acquisition plane. These scans also included the entirety of thalamus.

The two distinct methods of measuring T2 (CPMG vs TSE) will give inherently different values for T2 midpoint and heterogeneity between studies (see [supplementary information](#)). Relationships to variables such as age and cognitive score should be similar, given they are sensitive to the same tissue properties.

### Imaging analyses

All analyses were performed at CRICBristol in a Linux cluster environment. All analyses were carried out in single-subject native space.

CPMG and TSE scans were brain-extracted using FSL's *bet2* on the first echo in the series [44]. All extracted images were visually inspected for quality and re-run with different fractional intensity thresholds or gradient parameters where necessary. Fractional intensity threshold was typically set between 0.2–0.3. MPRAGE images were brain-extracted using *vbm8bet* (in-house script) and bias-field-corrected using FSL FAST [45]. T2 maps were created in MATLAB from multi-echo sequences by fitting logarithmic-space mono-exponential decay functions to each voxel series (overall summary of T2 calculation is shown in Knight et al. [25]). The first echo of CPMG was always excluded. A sum-of-echoes image was created in order to have one structural image representing the entire multi-echo sequence. This image was used for segmentation.

Hippocampus was automatically masked using the Automatic Segmentation of Hippocampal Subfields (ASHS) software package [46] (version: rev103, dated 12 June 2014; UPENN memory centre atlas dated 16 April 2014). CA1, CA2, CA3, dentate gyrus, subiculum and miscellaneous were combined to form a total hippocampus mask. This was overlaid onto T2 maps, giving a value of T2 for each voxel of hippocampus.

Whole thalamus masks were created using Freesurfer v6.0, using MPRAGE scans as input images [47]. After extraction from the Freesurfer segmentation image and registration to T2-space (TSE or CPMG) using FSL's FLIRT, thalamus masks were then overlaid onto T2 maps, and descriptive statistics were calculated, similarly to hippocampus. These automated masking programmes have demonstrated high accuracy whilst minimising subjective rater bias, without the need for group blinding.

### Modelling T2 heterogeneity

Distribution histograms were capped at 30 ms and 200 ms, as values outside these regions are unphysiological in brain tissue at 3T. The free-to-download MATLAB function 'fitmethis' [48] was used to fit 18 different

distribution functions (see [supplementary information](#)) to left and right hemisphere ROIs individually, using maximum likelihood estimation. Akaike Information Criteria (AIC) was calculated for each distribution type. The best fitting model was determined by the lowest AIC. The most frequent best-fitting model was recorded for the hippocampus and thalamus, and subsequent statistics calculated therefrom.

### Statistical analysis

ICV-corrected volumes, T2 metrics and cognitive scores were converted into Z scores for each study separately and pooled, with healthy controls of each study as a reference population. MANCOVA results comparing the two cohorts before and after this normalisation can be found in Supplementary Tables 3 and 4. Model parameters of T2 distributions were compared between groups using ANCOVA, with age as a covariate. Years of education and study (1 or 2) were included as the covariates in all models but did not significantly contribute to the model in any case. We also ran models using gender as a covariate, the results of which are shown in [supplementary information](#) (Supplementary Table 5), but the overall pattern of results was unchanged. Reported models correct for age but not years of education, study, or gender. Homogeneity of variances was tested using Levene's test, which was not significant for any test. Graphs show estimated marginal means from this analysis. Post-hoc pairwise comparisons were carried out using sidak correction for multiple comparisons (corrected  $p$  values are shown as ' $p_{\text{sidak}}$ '). Ability of volume and T2 to predict cognitive decline was assessed using linear regression, with follow-up cognition as the dependent variable and baseline cognition and age as covariates:

$$\begin{aligned} \text{Follow-up Cognition} = & \beta_{\text{intercept}} + \beta_{\text{age}}(\text{Age}) \\ & + \beta_{\text{BLCog}}(\text{BaselineCognition}) \\ & + \beta_{\text{Volume/T2}}(\text{Volume/T2}) \\ & + \text{error} \end{aligned}$$

Gender and study were also explored as covariates in these linear regression models; however, in no model were they significant predictors. Z scores for the latter analysis were calculated relative to each study's MCI population only.

Linear regressions were used to assess the strength of the relationship between age and T2 statistics in healthy controls. All reported  $p$  values are two-tailed. Balance tests were not carried out on demographic for reasons detailed by Mutz et al. [49].

Data handling and storage was carried out using MathWorks MATLAB 2015a (with statistics and machine learning toolbox) and Microsoft Excel 2016.

Statistical analysis was performed in IBM SPSS Statistics 24. Graphs were produced using GraphPad Prism v7.

### Results

Demographic details for the entire cohort can be found in Table 1. Separated demographic information for study 1 and study 2 can be found in Supplementary Tables 1 and 2, respectively, including specific cognitive test scores for each group.

#### Model fitting to describe T2 distribution characteristics

T2 distributions in the hippocampus and thalamus (Fig. 1) were best described in the majority of cases by a log-logistic distribution function (as determined by the lowest AIC). Log-logistic distribution is defined as:

$$f(x|\mu, \sigma) = \frac{1}{\sigma} \frac{1}{x} \frac{\exp(z)}{[1 + \exp(z)]^2}, \text{ where } z = \frac{\log(x) - \mu}{\sigma}$$

where  $\mu$  and  $\sigma$  denote the log-median value (midpoint) and distribution shape (heterogeneity), respectively. Values for hippocampus and thalamus volume and T2 model parameters can be found in Supplementary Tables 3 and 4.

#### T2 heterogeneity, but not midpoint, differentiates healthy older adults from those with MCI

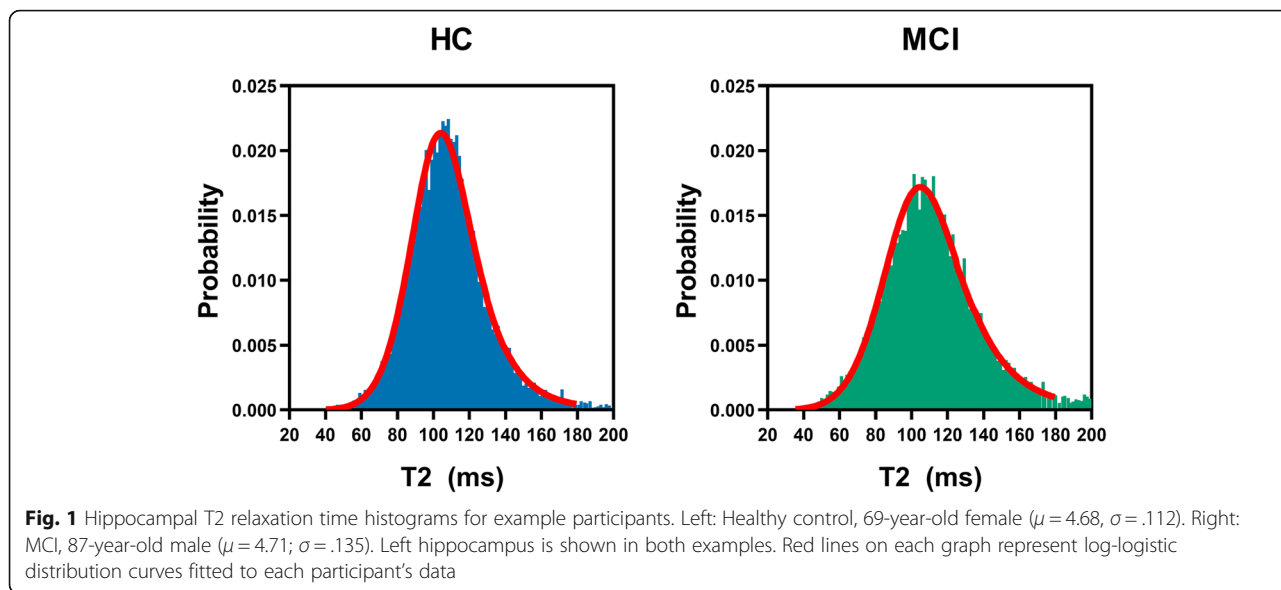
##### T2 midpoint ( $\mu$ )

There was no significant difference between HC, MCI and AD groups ( $F(2, 152) = 1.61, p = .204$ ; Fig. 2a) on T2 midpoint in the hippocampus. Although T2 midpoint was higher in the AD group than other groups, this effect was not statistically significant compared to either healthy controls ( $p_{\text{sidak}} = .283$ ) or the MCI group ( $p_{\text{sidak}} = .211$ ). There was no significant difference between healthy control and MCI groups ( $p_{\text{sidak}} = .971$ ).

We found a significant effect of group on T2 midpoint in the thalamus ( $F(2, 152) = 3.10, p = .048$ ; Fig. 2a). Post hoc analyses revealed that this was driven by an increase in T2 in the AD group (HC vs AD:  $p_{\text{sidak}} = .042$ ; MCI vs AD:  $p_{\text{sidak}} = .073$ ). As in the hippocampus, there was no significant difference between healthy controls and the MCI group ( $p_{\text{sidak}} = .989$ ).

##### T2 heterogeneity ( $\sigma$ )

There was a significant effect of group on hippocampal T2 heterogeneity ( $F(2, 152) = 9.76, p = .0001$ ; Fig. 2b). Pairwise comparisons revealed a significantly wider distribution in the MCI group compared to healthy controls ( $p_{\text{sidak}} < .0001$ ). There was no significant further change from MCI to AD ( $p_{\text{sidak}} = .913$ ), nor was there a significant difference between healthy controls and the AD group ( $p_{\text{sidak}} = .273$ ).



There was a significant difference in thalamic  $T2\sigma$  between groups ( $F(2, 152) = 5.90, p = .003$ ; Fig. 2b). Post hoc pairwise comparisons revealed a significantly increased  $T2\sigma$  in the MCI group compared to HCs ( $p_{\text{Sidak}} = .002$ ). In line with findings in the hippocampus, we observed no significant difference between MCI and AD groups ( $p_{\text{Sidak}} = .813$ ) or between healthy controls and the AD group ( $p_{\text{Sidak}} = .710$ ).

**Volume**

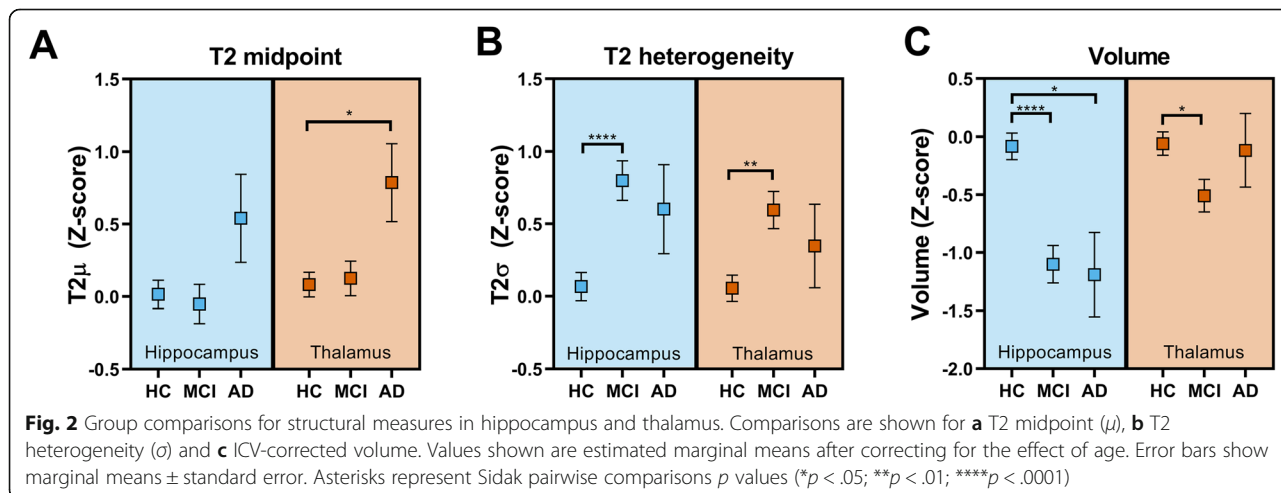
We found a significant effect of group on volume ( $F(2, 152) = 14.8, p < .0001$ ; Fig. 2c). Pairwise comparisons revealed a significantly smaller volume in the MCI group compared to healthy controls ( $p_{\text{Sidak}} < .0001$ ), as well as a significant difference between HC and AD groups ( $p_{\text{Sidak}} =$

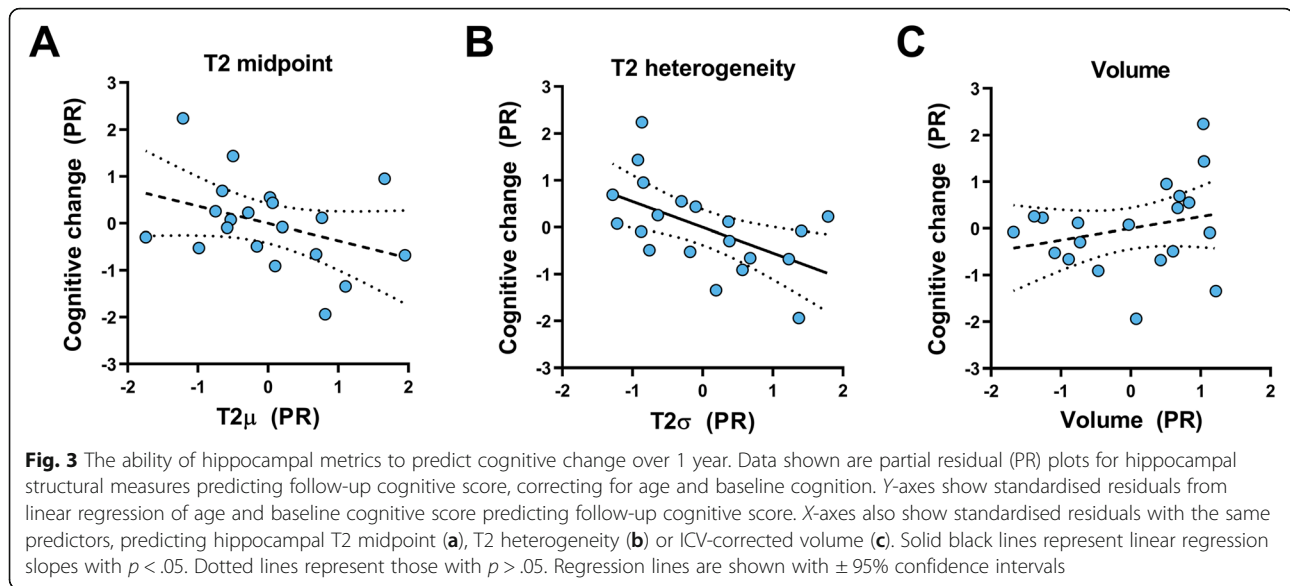
.014). There was no significant further increase from MCI to AD ( $p_{\text{Sidak}} = .994$ ).

There was a significant difference in thalamic volume between groups ( $F(2, 152) = 3.41, p = .036$ ; Fig. 2c). Post hoc pairwise comparisons revealed a significantly smaller volume in the MCI group compared to HCs ( $p_{\text{Sidak}} = .032$ ).

**T2 heterogeneity predicts cognitive decline in mild cognitive impairment**

Hippocampal T2 heterogeneity significantly predicted follow-up cognitive score, after accounting for baseline cognitive score and age ( $R^2 = .387, F(3, 16) = 3.37, p = .045$ ; Fig. 3b). T2 heterogeneity was the sole significant individual predictor in this model ( $\beta_{T2\sigma} = -.601, p_{T2\sigma} =$





.018). Cognitive change over time was not predicted by this method by either hippocampal T2 $\mu$  ( $R^2 = .241$ ,  $F(3, 16) = 1.69$ ,  $p = .209$ ;  $\beta_{T2\mu} = -.377$ ,  $p_{T2\mu} = .132$ ; Fig. 3a) or hippocampal volume ( $R^2 = .177$ ,  $F(3, 16) = 1.15$ ,  $p = .361$ ;  $\beta_{vol} = .263$ ,  $p_{vol} = .315$ ; Fig. 3c).

#### Effects of age on T2 relaxometry and volume in individuals with normal cognition

##### T2 midpoint ( $\mu$ )

There was no statistically significant relationship between age and hippocampal T2 midpoint (T2 $\mu$ ,  $R^2 = .012$ ,  $p = .289$ ,  $n = 97$ ; Fig. 4a) in cognitively normal individuals. In the thalamus, age was a strong positive predictor of T2 $\mu$  ( $R^2 = .320$ ,  $p < .0001$ ,  $n = 97$ ; Fig. 4b).

##### T2 heterogeneity ( $\sigma$ )

Age was a significant positive predictor of T2 heterogeneity in the hippocampus (T2 $\sigma$ ,  $R^2 = .122$ ,  $p = .0004$ ; Fig. 4c) and thalamus ( $R^2 = .127$ ,  $p = .0003$ ; Fig. 4d) in cognitively normal individuals.

##### Volume

Age was a significant positive predictor of volume in the hippocampus ( $R^2 = .106$ ,  $p = .001$ ; Fig. 4e) and thalamus ( $R^2 = .134$ ,  $p = .0002$ ; Fig. 4e) in cognitively normal individuals.

#### Discussion

We show that the width of the distribution of T2 in the hippocampus and the thalamus differentiates healthy older adults from those with mild cognitive impairment, while the T2 midpoint does not. Heterogeneity of T2 may therefore be a marker of structural integrity, which

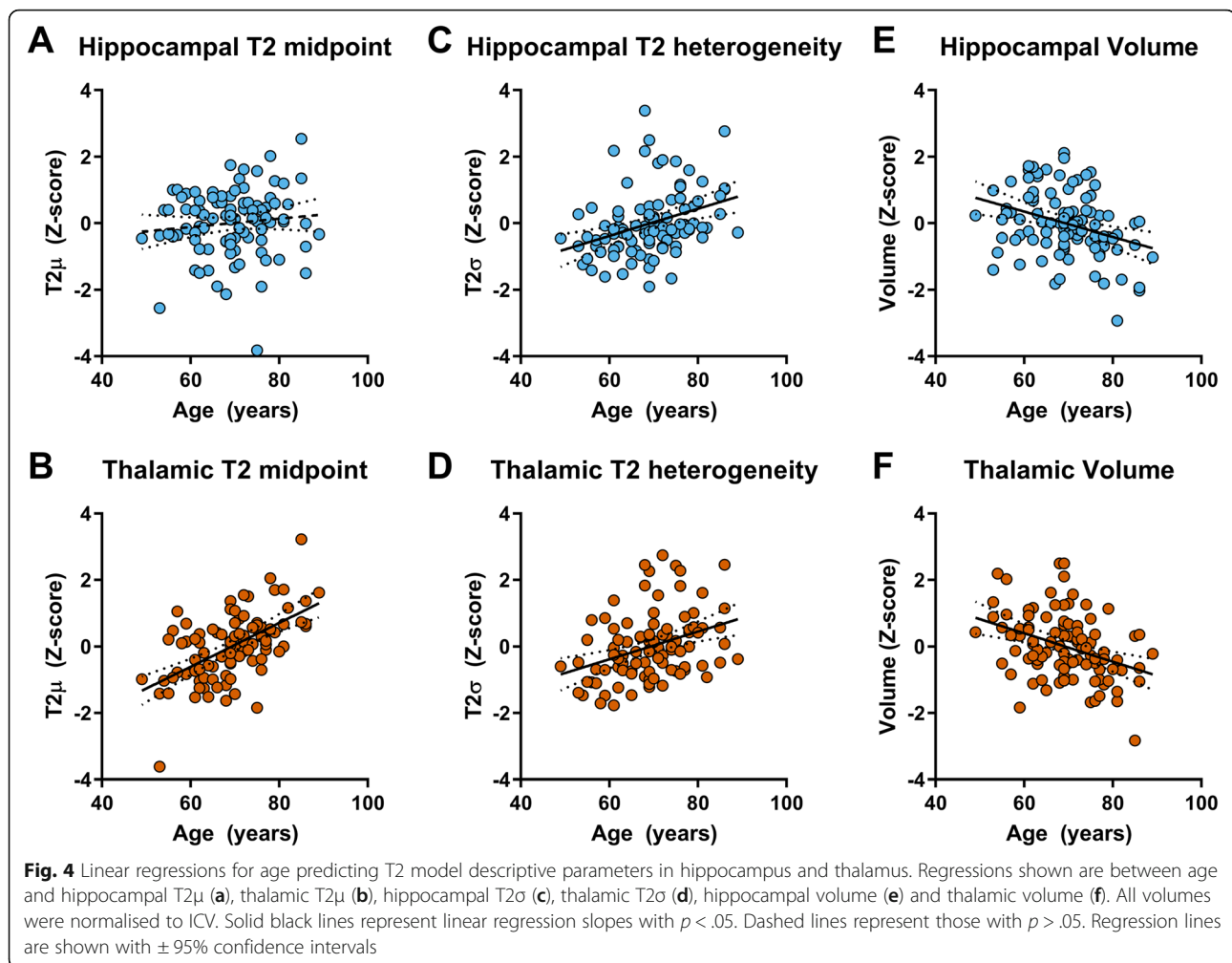
has potential detect early signs of Alzheimer's disease pathology. Although ageing affects T2, even after controlling for age, T2 heterogeneity predicted decline whereas hippocampal volume and T2 midpoint did not.

Based on the presented T2 relaxometry data, we propose the following model in Fig. 5 where healthy ageing is characterised by a relative dominance of factors that increase T2 over factors that decrease T2, particularly in the thalamus. Incipient Alzheimer's disease may be characterised by additional factors that decrease T2, balancing out the effects of T2-increasing factors on T2 midpoint to some extent. This leads to an increasing width of the distribution of T2 without necessarily changing the midpoint in prodromal AD. We see this in our MCI cohort, who are at increased risk of a later diagnosis of AD [39, 40, 50]. In later stages of disease, after a diagnosis of Alzheimer's disease, factors that increase T2 may predominate. This model explains these data and ties together previous seemingly conflicting literature such as the discrepancy between human and animal literature of T2 changes due to Alzheimer's disease (see [supplementary information](#) for full discussion on this point).

#### T2-prolonging factors are dominant in healthy ageing and later stage Alzheimer's disease

The primary causes of variability in T2 are content and mobility of water. T2 increases as water mobility increases [51]. The amount of free water in a region can be partially attributed to the inverse of the compartmentalisation of the water, as is caused by cell membrane disruption. As cells die, whether due to normal ageing processes [16, 17] or pathology, cell membranes become damaged, thereby increasing the amount of free water within a tissue [52].





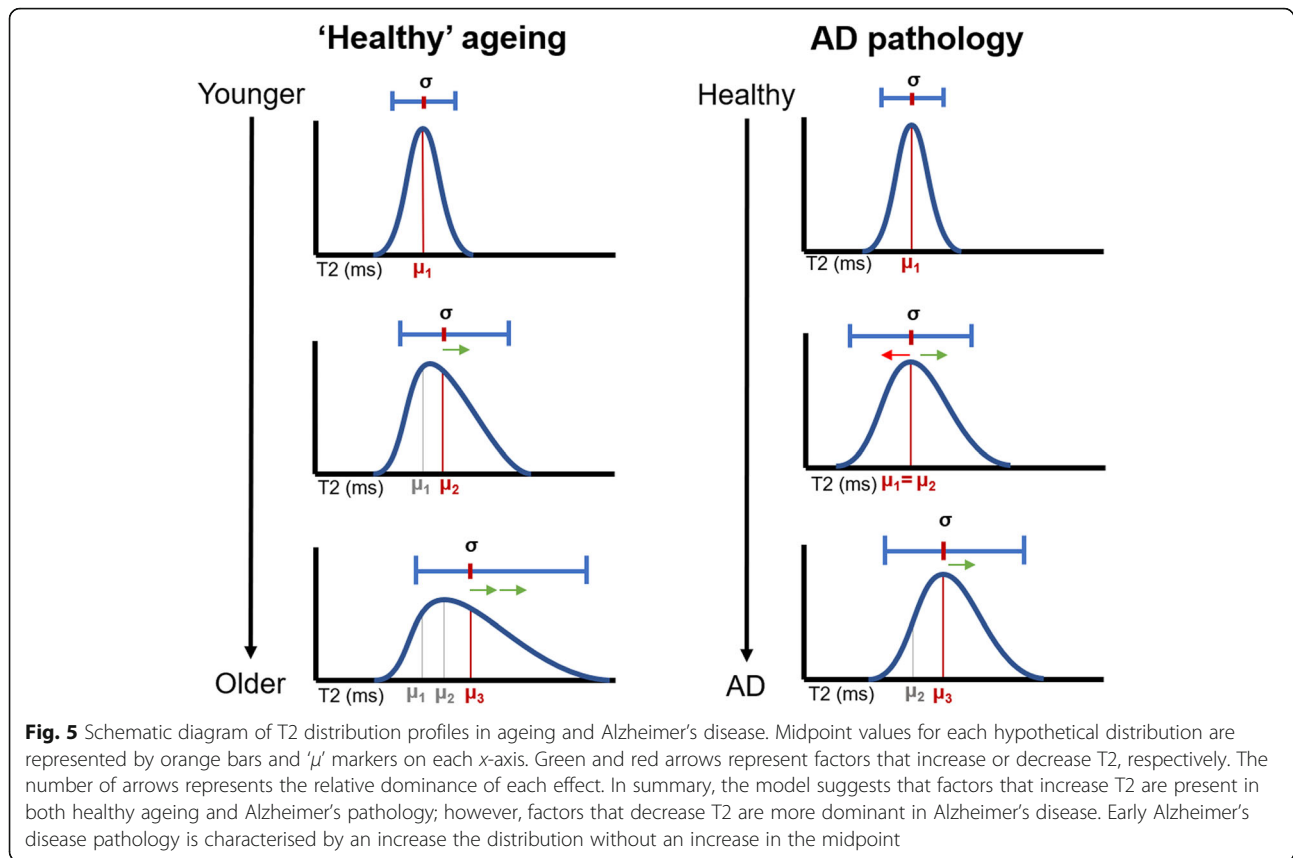
The breakdown of myelinated structures also causes T2 to increase in white matter and can be caused by both ageing and Alzheimer's disease [24, 53–57], as well as other conditions including vascular dementia [58]. This leads to an increase in T2 both in healthy ageing and in Alzheimer's disease, even in early stages, as a result of microstructural damage. In support of this, this study shows a significantly longer T2 in the thalamus of Alzheimer's disease patients compared to healthy controls, as well as in cognitively normal older people.

Additionally, we show that T2 heterogeneity is predicted by age in both the thalamus and hippocampus, an effect that would be expected from uneven increases in T2 across the region. However, T2 does not appear to increase significantly in the hippocampus either with age or disease progression, except perhaps at later stages of the disease course, after a diagnosis of Alzheimer's disease. One explanation is that the increase in T2 is balanced out in the hippocampus by T2-shortening factors that are present even prior to MCI diagnosis. This is discussed further in the following sections.

#### T2-shortening factors may indicate pathology beyond the effects of ageing

Dense protein structures (e.g. A $\beta$ , NFTs) and paramagnetic materials (e.g. iron) cause T2 to decrease due to an increased macromolecule-to-water ratio and the restriction of water motility in the extracellular space. Neuro-pathology defined by overexpression of such factors might therefore be expected to decrease T2 in localised regions of deposition. In the case of Alzheimer's pathology, this would occur in the hippocampus and thalamus, balancing out the T2-prolonging factors discussed previously. In support of this, this study shows a substantial increase in distribution width of T2 in both hippocampus and thalamus, after correcting for age, in people with MCI compared to healthy controls. Furthermore, the study also shows no increase of T2 midpoint in MCI compared to controls, a result to be expected given counteracting factors increasing and decreasing T2.

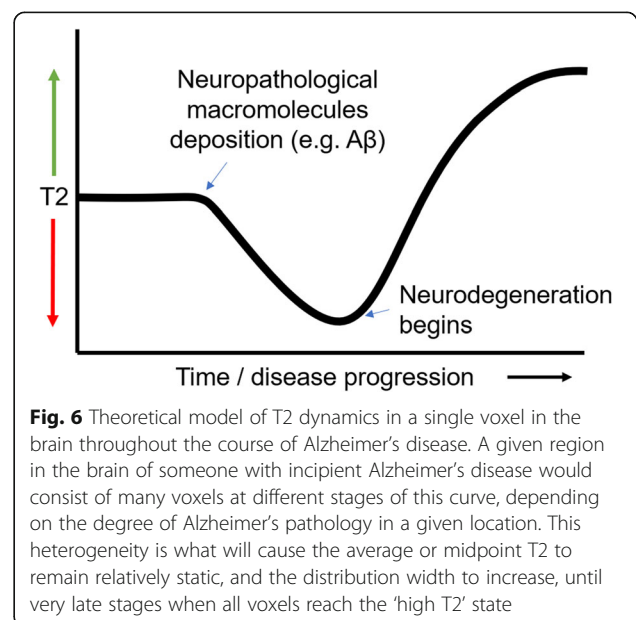
The described model is further supported by a previous study by Su et al. [59]. The cross-sectional results of their study revealed that Alzheimer's disease patients



had significantly reduced T2 compared to healthy controls. However, longitudinally, T2 in Alzheimer's disease patients was seen to increase. The currently presented model explains these results in terms of a shift in the dominance of factors that increase or decrease T2 throughout the progression of Alzheimer's disease. Macromolecular pathological hallmarks cause T2 to decrease in the first instance, which later causes physical damage to the structure, causing T2 to increase as the disease progresses (Fig. 6), as is seen in the majority of studies on T2 in Alzheimer's disease [26–30].

There is, of course, considerable debate as to the role of plaques in Alzheimer's disease pathology (for a review see [60]) and some question as to the disease-specificity of iron accumulation [36, 61]. Indeed, plaques have been found in the brains of many people without any other sign of Alzheimer's disease, particularly in the hippocampus [62, 63]. Oligomeric A $\beta$ , however, could still have T2-shortening effects in the brains of people with early Alzheimer's disease. The presence of some T2-shortening factors even in those with no Alzheimer's disease-specific pathology could explain the lack of correlation between hippocampal T2 midpoint and age in healthy control participants. In further support of this, we do see a strong correlation between T2 midpoint and age in the thalamus, a region which is less likely to

display pathology in a healthy control cohort [14, 63]. This is discussed further in [supplementary information](#). T2-shortening could also be caused by iron in microglia which are recruited in response to inflammation. Although inflammation is a factor in Alzheimer's disease,



it could also be present in response to comorbidities like cardiovascular disease [64]. Conversely, cardiovascular disease could also reduce blood flow to the brain, potentially reducing the iron and causing T2 to increase. Unfortunately, amyloid and iron status of the current studies' participants were not available, so the higher number of voxels with low T2 cannot be directly attributed to either factor. Future work could aim to colocalise areas of low T2 with A $\beta$ , for example with positron emission tomography (PET), and brain iron levels by measuring field dependent relaxation rate increase (FDRI) as was conducted by Raven et al. [65].

Despite some presence of A $\beta$  and iron in healthy ageing, various studies suggest that the two factors combine in Alzheimer's pathology, leading to the much greater T2-shortening effects seen in Alzheimer's disease. A study by El Tannir El Tayara et al. [23] showed that T2 in the hippocampus (specifically in the subiculum) was decreased in a mouse model of Alzheimer's disease that produced amyloid deposits (APP/PS1), compared to another model that does not form such deposits (PS1). The authors attribute this, at least in part, to the colocalization of amyloid and iron. Such histological colocalization has also been reported by Falangola et al. [66]. Excess iron can not only contribute to oxidative stress in and of itself, but can also contribute to A $\beta$  and NFT misfolding [67], thereby exacerbating Alzheimer's pathology. Numerous studies are supportive of the idea that a combination of iron and A $\beta$  cause significant T2 shortening [23, 35, 66, 68–73]. This also has implications for Lewy body diseases such as Parkinson's disease, which is also characterised by increased iron deposition [36].

#### Potential clinical utility of T2 relaxometry

Understanding T2 dynamics in preclinical Alzheimer's disease and healthy ageing offers the potential for great clinical benefit. If Alzheimer's pathology can be detected using MRI prior to the onset of hippocampal atrophy, significant change in cognition, or loss of daily independence, patients may receive treatment much earlier—at a stage where neurodegenerative damage is preventable or even reversible. Additionally, as our pilot data show [25], T2 heterogeneity outperforms more traditional measures of microstructural integrity in the identifying pathology.

In this study, we show that T2 heterogeneity can predict cognitive decline in the MCI group where volume and T2 midpoint cannot. This effect was significant after regressing out the effect of age suggesting that it does relate to pathology or other age-independent brain changes. Furthermore, any test-retest variability in the cognitive tests used would likely only introduce noise rather than systematic bias. We therefore believe this result to be robust.

Hippocampal volume is the one of the most widely studied and effective predictors of cognitive decline (for a review, see de Flores et al. [74]). However, rather than measuring pathology itself, volumetry measures tissue atrophy, a consequence of pathology. T2 increases also measure consequences of pathology, in the form of increased regional CSF, oedema or cell membrane breakdown; however, it is a more sensitive measure and may indicate subtle damage before macroscopic atrophy is detectable. Furthermore, T2 decreases may measure key features of Alzheimer's pathology itself, such as iron, A $\beta$  and NFT deposition that can occur before hippocampal shrinkage [75]. Measuring T2 heterogeneity allows these opposing factors to be considered, as they may indicate slightly damaged tissue that has the potential for therapeutic rescue. Measuring T2 distribution width compared to age-corrected normative data may be indicative of physical damage beyond what should be expected for a given age. Given systematic differences in T2 between pulse sequences (as seen in Supplementary Tables 1–4), exact normative data would have to be standardised for a given sequence. However, as we see consistent results across two cohorts with two different pulse sequences, we expect these results to be highly generalisable across sequences. These markers may compliment or even surpass volumetry in predicting future cognitive decline. As neuroimaging, often MRI, is part of routine clinical screening processes for neurological disease, this method is highly practical and easily translatable.

It is important to highlight that even though our results are largely discussed in the context of AD, an increase in the distribution of T2 is likely not specific to AD per se, but rather may be a highly versatile novel measure of microstructural integrity that can be applied to the diagnosis of many diseases. It is likely to be particularly useful in any disease characterised by factors which both increase and decrease T2, in which changes in T2 midpoint would be masked. This may include many neurodegenerative disorders, particularly those where age is a risk factor, such as dementia with Lewy bodies, Parkinson's disease or vascular dementia. MCI is also a risk factor for these disorders [76, 77], and pathology for these conditions is likely present within our MCI population. As with any structural measure, it will be the spatial and temporal patterns of microstructural changes throughout the brain which may be specific to a given disease. This study focused on the MTL and thalamus in groups with high risk of AD pathology, thus discussion centres mostly around AD. However, non-AD disease pathology may also be present in our MCI cohort also causing increased T2 heterogeneity in the hippocampus and/or thalamus.

With further research to characterise the pattern of microstructural changes in T2 distribution and volume

within the brain, perhaps by looking in closer detail at subfields of the MTL, T2 heterogeneity may be used to develop more specific diagnostic criteria early on in the disease process. If this is the case, MRI may become a non-invasive alternative to CSF biomarker analysis and a cheaper option than amyloid or tau PET scanning, both of which can detect very early AD pathology [78, 79]. Furthermore, although CSF biomarkers provide a good overview of the presence of pathology, T2 heterogeneity allows direct quantification of tissue which, although damaged, may stand a chance of therapeutic rescue, and may therefore predict treatment efficacy on a patient by patient basis. The combined value of T2 heterogeneity and CSF biomarkers is, of course, an exciting avenue for future research.

In addition to the clinical utility of T2 heterogeneity described here, T2 heterogeneity also has potential for use in basic and translational research. Current studies of the function of human hippocampus and its constituent subfields, for example, often involve assessing relationships with volume, despite limitations of the 'bigger is better' hypothesis (see review by Petten [80]). T2 heterogeneity may be used to identify tissue that is extant but dysfunctional, which may otherwise confound volumetry, leading to more accurate assessment of the amount of 'healthy' tissue present. This, of course, has the potential for application to other brain areas and may contribute to an overall better understanding of brain-behaviour relationships in health and disease.

### Limitations

With the exception of some of those who have actually received a clinical diagnosis of Alzheimer's disease in study 1, the amyloid status of these participants is unknown. Amyloid (measured either in CSF or using PET) is one of the most commonly used biomarkers to increase certainty of the presence of Alzheimer's disease pathology. Those who present with mild cognitive impairment often are only classified as MCI based on presentation of cognitive symptoms. Such cognitive impairment could be caused by factors other than Alzheimer's pathology, including other dementias, stroke, pharmaceutical side effects and sleep problems to name a few. Further work is required to understand the ability of T2 heterogeneity to rule out causes of MCI not related to dementia.

Secondly, although we present results in a relatively large sample of healthy older controls and people with MCI, we are limited by our small sample of Alzheimer's disease patients. This is primarily because they were only recruited as a part of study 1. This limits the statistical significance of some of the effects that we describe, and therefore conclusions from this group are slightly tentative. This is acknowledged throughout interpretation of

these results, which we expect to be reproducible with a larger sample size. The lack of any observed statistical difference between MCI and AD groups is also further discussed in [supplementary information](#).

Thirdly, this study combines two distinct participant cohorts, the methodology of which differ in two key ways: (i) the test used to measure general cognitive ability (study 1: MoCA; study 2: ACE-III) and (ii) the MRI sequence used to quantitatively assess T2 (study 1: 10-echo CPMG; study 2: 3-echo TSE). For these data, we have normalised within-cohort (calculated Z scores) and combined data after normalisation. Given that the cohorts are similar in almost every other way, and these methods are purported to measure the same underlying principles, the benefits of a larger sample size provide ample justification for combining cohorts as we have done.

Finally, the only regions studied here, hippocampus and thalamus, are both regions known to be affected by Alzheimer's pathology at early stages. Future studies would benefit from exploring T2 dynamics in other brain regions, including those that are not directly implicated in early Alzheimer's disease. This is not possible with existing data for either study 1 or study 2, as the multi-echo T2 scans acquired do not cover the whole brain. Future analyses should also focus on subdivisions in these regions, such as T2 differences between MTL subfields and across individual thalamic nuclei, which have different susceptibility to AD pathology.

### Conclusions

In this paper, we show that T2 heterogeneity is a good measure of microstructural integrity of brain tissue. We propose a model (Fig. 5) that suggests factors that increase T2 are indicative of microstructural damage but are not necessarily specific signs of Alzheimer's pathology. Rather, factors that decrease T2 are prevalent in Alzheimer's pathology and may occur in the earliest stages of disease (Fig. 6). These two opposing forces act to balance out the mean in prodromal Alzheimer's disease, causing varied results in the human literature. The model makes specific and testable predictions about the temporal dynamics of T2 alterations throughout ageing and prodromal Alzheimer's disease. It also highlights potential early indicators of Alzheimer's disease, allowing Alzheimer's disease-related cognitive decline to be distinguished from that seen in healthy ageing. We show that T2 heterogeneity surpasses midpoint T2 and the more established measure of volumetry in predicting cognitive decline in those with MCI.

This study represents one of the first studies of T2 heterogeneity within the brain in MCI and Alzheimer's disease, and the first to show its utility in predicting cognitive decline.

## Supplementary information

Supplementary information accompanies this paper at <https://doi.org/10.1186/s13195-020-00672-9>.

**Additional file 1: Supplementary information. Supplementary Table 1.** Study 1 cohort information. **Supplementary Table 2.** Study 2 cohort information. **Supplementary Table 3.** Multivariate ANOVA results for testing between-study differences in raw volume and T2 data. **Supplementary Table 4.** Multivariate ANOVA results for testing between-study differences in volume and T2 data after being normalised to each study's healthy control group. **Supplementary Table 5.** ANCOVA results for predicting brain structural measures correcting for age and gender.

### Acknowledgements

The authors wish to thank Join Dementia Research and the Avon and Wiltshire Mental Health Partnership for their assistance with participant recruitment. We also wish to thank those who have helped collect data for the projects (Emma Hadley, Ellen Gaaikema, Lucy Adams, Candida Stainer, Ben Kershaw and Bryony McCann), Aileen Wilson for her help conducting MRI scans, and all the volunteers who gave up their time to take part in our studies.

### Authors' contributions

This manuscript was written and cognitive testing protocol designed by A.W. and E.C. Imaging protocols were set up by R. K and M.K. M.K. also set up imaging analysis pipelines which were later managed by A.W. Cognitive testing, scoring and imaging was carried out by A.W., V.N., E.S.-J., H.I., S.D. and D.T. The authors read and approved the final manuscript.

### Funding

This study was funded by Alzheimer's Research UK, BRACE and Wellcome (109067/Z/15/AI).

### Availability of data and materials

The datasets used during the current study are available from the corresponding author on reasonable request.

### Ethics approval and consent to participate

All patients provided informed written consent prior to testing. Ethical approval was given by Frenchay NHS Research Ethics Committee.

### Consent for publication

Not applicable

### Competing interests

We declare that none of the authors have competing financial or non-financial interests.

### Author details

<sup>1</sup>Bristol Medical School, University of Bristol, Bristol, UK. <sup>2</sup>Institute of Clinical Neurosciences, North Bristol NHS Trust, Bristol, UK. <sup>3</sup>School of Psychological Science, University of Bristol, Bristol, UK.

Received: 28 May 2020 Accepted: 25 August 2020

Published online: 10 September 2020

### References

- Cummings JL, Morstorf T, Zhong K. Alzheimer's disease drug-development pipeline: few candidates, frequent failures. *Alzheimers Res Ther*. 2014;6(4):37.
- Alzheimer's Association. 2015 Alzheimer's disease facts and figures. *Alzheimers Dement*. 2015;11(3):332–84.
- Teipel SJ, Grothe M, Lista S, Toschi N, Garaci FG, Hampel H. Relevance of magnetic resonance imaging for early detection and diagnosis of Alzheimer disease. *Med Clin North Am*. 2013;97(3):399–424.
- Jack CR, Slomkowski M, Gracon S, Hoover TM, Felmlee JP, Stewart K, et al. MRI as a biomarker of disease progression in a therapeutic trial of milameline for AD. *Neurology*. 2003;60(2):253–60.
- Jack CR, Shiung MM, Gunter JL, O'Brien PC, Weigand SD, Knopman DS, et al. Comparison of different MRI brain atrophy rate measures with clinical disease progression in AD. *Neurology*. 2004;62(4):591–600.
- Jack CR, Petersen RC, Xu YC, O'Brien PC, Smith GE, Ivnik RJ, et al. Prediction of AD with MRI-based hippocampal volume in mild cognitive impairment. *Neurology*. 1999;52(7):1397–403.
- Jack CR, Petersen RC, Xu Y, O'Brien PC, Smith GE, Ivnik RJ, et al. Rates of hippocampal atrophy correlate with change in clinical status in aging and AD. *Neurology*. 2000;55(4):484–89.
- Henneman WJP, Sluimer JD, Barnes J, WMvd F, Sluimer IC, Fox NC, et al. Hippocampal atrophy rates in Alzheimer disease. *Neurology*. 2009;72(11):999–1007.
- Fox NC, Scahill RI, Crum WR, Rossor MN. Correlation between rates of brain atrophy and cognitive decline in AD. *Neurology*. 1999;52(8):1687–9.
- Fleisher AS, Sun S, Taylor C, Ward CP, Gamst AC, Petersen RC, et al. Volumetric MRI vs clinical predictors of Alzheimer disease in mild cognitive impairment. *Neurology*. 2008;70(3):191–9.
- Braak H, Braak E. Neuropathological staging of Alzheimer-related changes. *Acta Neuropathol*. 1991;82(4):239–59.
- Braak H, Braak E. Staging of Alzheimer's disease-related neurofibrillary changes. *Neurobiol Aging*. 1995;16(3):271–8.
- Selkoe DJ, Hardy J. The amyloid hypothesis of Alzheimer's disease at 25 years. *EMBO Mol Med*. 2016;8(6):595–608.
- Thal DR, Rüb U, Orantes M, Braak H. Phases of A-Beta-deposition in the human brain and its relevance for the development of AD. *Neurology*. 2002;58(12):1791–800.
- Smith MA, Zhu X, Tabaton M, Liu G, Jr DWM, Cohen ML, et al. Increased iron and free radical generation in preclinical Alzheimer disease and mild cognitive impairment. *J Alzheimers Dis* 2010;19(1):363–372.
- LAVd P, Hensel A, Barkhof F, Gertz HJ, Scheltens P, WMvd F. Hippocampal atrophy in Alzheimer disease: age matters. *Neurology*. 2006;66(2):236–8.
- Golomb J, MJD L, Kluger A, George AE, Tarshish C, Ferris SH. Hippocampal atrophy in normal aging: an association with recent memory impairment. *Arch Neurol*. 1993;50(9):967–73.
- Frisoni GB, Ganzola R, Canu E, Rüb U, Pizzini FB, Alessandrini F, et al. Mapping local hippocampal changes in Alzheimer's disease and normal ageing with MRI at 3 Tesla. *Brain*. 2008;131(12):3266–76.
- Symm M, Jäger HR, Schmierer K, Yousry TA. A review of structural magnetic resonance neuroimaging. *J Neurol Neurosurg Psychiatry*. 2004;75(9):1235–44.
- Hardy PA, Gash D, Yokel R, Andersen A, Ai Y, Zhang Z. Correlation of R2 with total iron concentration in the brains of rhesus monkeys. *J Magn Reson Imaging*. 2005;21(2):118–27.
- Jara H, Sakai O, Mankal P, Irving RP, Norbash AM. Multispectral quantitative magnetic resonance imaging of brain iron stores. *Top Magn Reson Imaging*. 2006;17(1):19–30.
- Meadowcroft MD, Peters DG, Dewal RP, Connor JR, Yang QX. The effect of iron in MRI and transverse relaxation of amyloid-beta plaques in Alzheimer's disease. *NMR Biomed*. 2015;28(3):297–305.
- El Tannir El Tayara N, Delatour B, Cudennec CL, Guégan M, Volk A, Dhenain M. Age-related evolution of amyloid burden, iron load, and MR relaxation times in a transgenic mouse model of Alzheimer's disease. *Neurobiol Dis*. 2006;22(1):199–208.
- Knight MJ, McCann B, Tsivos D, Dillon S, Coulthard E, Kauppinen RA. Quantitative T2 mapping of white matter: applications for ageing and cognitive decline. *Phys Med Biol*. 2016;61(15):5587–605.
- Knight MJ, Wearn A, Coulthard E, Kauppinen RA. T2 relaxometry and diffusion tensor indices of the hippocampus and entorhinal cortex improve sensitivity and specificity of MRI to detect amnesic mild cognitive impairment and Alzheimer's disease dementia. *J Magn Reson Imaging*. 2019;49(2):445–55.
- Kirsch SJ, Jacobs RW, Butcher LL, Beatty J. Prolongation of magnetic resonance T2 time in hippocampus of human patients marks the presence and severity of Alzheimer's disease. *Neurosci Lett*. 1992;134(2):187–90.
- Wang H, Yuan H, Shu L, Xie J, Zhang D. Prolongation of T2 relaxation times of hippocampus and amygdala in Alzheimer's disease. *Neurosci Lett*. 2004;363(2):150–3.
- Laakso MP, Partanen K, Soininen H, Lehtovirta M, Hallikainen M, Hänninen T, et al. MR T2 relaxometry in Alzheimer's disease and age-associated memory impairment. *Neurobiol Aging*. 1996;17(4):535–40.
- Pitkänen A, Savander V, LeDoux JE. Organization of intra-amygdaloid circuitries in the rat: an emerging framework for understanding functions of the amygdala. *Trends Neurosci*. 1997;20(11):517–23.

30. Dawe RJ, Bennett DA, Schneider JA, Leurgans SE, Kotrotsou A, Boyle PA, et al. Ex vivo T2 relaxation: associations with age-related neuropathology and cognition. *Neurobiol Aging*. 2014;35(7):1549–61.
31. Luo Z, Zhuang X, Kumar D, Wu X, Yue C, Han C, et al. The correlation of hippocampal T2-mapping with neuropsychology test in patients with Alzheimer's disease. *PLoS One*. 2013;8(9):e76203.
32. House MJ, Pierre STG, Foster JK, Martins RN, Clamette R. Quantitative MR imaging R2 relaxometry in elderly participants reporting memory loss. *AJNR Am J Neuroradiol*. 2006;27(2):430–9.
33. Campeau NG, Petersen RC, Felmlee JP, O'Brien PC, Jack CR. Hippocampal transverse relaxation times in patients with Alzheimer disease. *Radiology*. 1997;205(1):197–201.
34. Tang X, Cai F, Ding D-X, Zhang L-L, Cai X-Y, Fang Q. Magnetic resonance imaging relaxation time in Alzheimer's disease. *Brain Res Bull*. 2018;140:176–89.
35. MJ H, Pierre TGS, McLean C. 1.4T study of proton magnetic relaxation rates, iron concentrations, and plaque burden in Alzheimer's disease and control postmortem brain tissue. *Magn Reson Med*. 2008;60(1):41–52.
36. Ward RJ, Zucca FA, Duyn JH, Crichton RR, Zecca L. The role of iron in brain ageing and neurodegenerative disorders. *Lancet Neurol*. 2014;13(10):1045–60.
37. Braak H, Braak E, Yilmazer D, de Vos RAJ, Jansen ENH, Bohl J. Pattern of brain destruction in Parkinson's and Alzheimer's diseases. *J Neural Transm*. 1996;103(4):455–90.
38. Norton TJJ, Pereyra M, Knight MJ, McGarry BM, Jokivarsi KT, Gröhn OHJ, et al. Stroke onset time determination using MRI relaxation times without non-ischaemic reference in a rat stroke model. *Biomed Spectroscopy Imaging*. 2017;6(1–2):25–35.
39. Roberts R, Knopman DS. Classification and epidemiology of MCI. *Clin Geriatr Med*. 2013;29(4):753–72.
40. Petersen RC, Roberts RO, Knopman DS, Boeve BF, Geda YE, Ivnik RJ, et al. Mild cognitive impairment: ten years later. *Arch Neurol*. 2009;66(12):1447–55.
41. Albert MS, DeKosky ST, Dickson D, Dubois B, Feldman HH, Fox NC, et al. The diagnosis of mild cognitive impairment due to Alzheimer's disease: recommendations from the National Institute on Aging-Alzheimer's Association workgroups on diagnostic guidelines for Alzheimer's disease. *Alzheimers Dement*. 2011;7(3):270–9.
42. Nasreddine ZS, Phillips NA, Bédirian V, Charbonneau S, Whitehead V, Collin I, et al. The Montreal Cognitive Assessment, MoCA: a brief screening tool for mild cognitive impairment. *J Am Geriatr Soc*. 2005;53(4):695–9.
43. McKhann GM, Knopman DS, Chertkow H, Hyman BT, Jack CR, Kawas CH, et al. The diagnosis of dementia due to Alzheimer's disease: recommendations from the National Institute on Aging-Alzheimer's Association workgroups on diagnostic guidelines for Alzheimer's disease. *Alzheimers Dement*. 2011;7(3):263–9.
44. Smith SM. Fast robust automated brain extraction. *Hum Brain Mapp*. 2002;17(3):143–55.
45. Zhang Y, Brady M, Smith S. Segmentation of brain MR images through a hidden Markov random field model and the expectation-maximization algorithm. *IEEE Trans Med Imaging*. 2001;20(1):45.
46. Yushkevich PA, Pluta JB, Wang H, Xie L. Automated volumetry and regional thickness analysis of hippocampal subfields and medial temporal cortical structures in mild cognitive impairment. *Hum Brain Mapp*. 2015;36(1):256–87.
47. Iglesias JE, Augustinack JC, Nguyen K, Player CM, Player A, Wright M, et al. A computational atlas of the hippocampal formation using ex vivo, ultra-high resolution MRI: application to adaptive segmentation of in vivo MRI. *NeuroImage*. 2015;115(Prog Brain Res 163 2007):117–37.
48. de Castro F. fitmethis. MATLAB Central File Exchange; 2020.
49. Mutz DC, Pemantle R, Pham P. The perils of balance testing in experimental design: messy analyses of clean data. *Am Statistician*. 2018;73(1):32–42.
50. Fischer P, Jungwirth S, Zehetmayer S, Weissgram S, Hoeningsschnabl S, Gelpi E, et al. Conversion from subtypes of mild cognitive impairment to Alzheimer dementia. *Neurology*. 2007;68(4):288–91.
51. Kamman RL, Go KG, Brouwer W, Berendsen HJC. Nuclear magnetic resonance relaxation in experimental brain edema: effects of water concentration, protein concentration, and temperature. *Magn Reson Med*. 1988;6(3):265–74.
52. Besson JAO, Best PV, Skinner ER. Post-mortem proton magnetic resonance spectrometric measures of brain regions in patients with a pathological diagnosis of Alzheimer's disease and multi-infarct dementia. *Br J Psychiatry*. 1992;160(2):187–90.
53. Alonso-Ortiz E, Levesque IR, Pike GB. MRI-based myelin water imaging: a technical review. *Magn Reson Med*. 2015;73(1):70–81.
54. Bartzokis G, Sultzer D, Lu PH, Nuechterlein KH, Mintz J, Cummings JL. Heterogeneous age-related breakdown of white matter structural integrity: implications for cortical "disconnection" in aging and Alzheimer's disease. *Neurobiol Aging*. 2004;25(7):843–51.
55. Paus T, Collins DL, Evans AC, Leonard G, Pike B, Zijdenbos A. Maturation of white matter in the human brain: a review of magnetic resonance studies. *Brain Res Bull*. 2001;54(3):255–66.
56. Bartzokis G, Lu PH, Geschwind DH, Edwards N, Mintz J, Cummings JL. Apolipoprotein E genotype and age-related myelin breakdown in healthy individuals: implications for cognitive decline and dementia. *Arch Gen Psychiatry*. 2006;63(1):63–72.
57. Bartzokis G. Alzheimer's disease as homeostatic responses to age-related myelin breakdown. *Neurobiol Aging*. 2011;32(8):1341–71.
58. Bouhrara M, Reiter DA, Bergeron CM, Zukley LM, Ferrucci L, Resnick SM, et al. Evidence of demyelination in mild cognitive impairment and dementia using a direct and specific magnetic resonance imaging measure of myelin content. *Alzheimer's Dementia J Alzheimer's Assoc*. 2018;14(8):998–1004.
59. Su L, Blamire AM, Watson R, He J, Aribisala B, O'Brien JT. Cortical and subcortical changes in Alzheimer's disease: a longitudinal and quantitative MRI study. *Curr Alzheimer Res*. 2016;13(5):534–44.
60. Morris GP, Clark IA, Vissel B. Inconsistencies and controversies surrounding the amyloid hypothesis of Alzheimer's disease. *Acta Neuropathologica Communications*. 2014;2(1):135.
61. Castellani RJ, Moreira PI, Perry G, Zhu X. The role of iron as a mediator of oxidative stress in Alzheimer disease. *BioFactors*. 2012;38(2):133–8.
62. Davis DG, Schmitt FA, Wekstein DR, Markesbery WR. Alzheimer neuropathologic alterations in aged cognitively normal subjects. *J Neuropathol Exp Neurol*. 1999;58(4):376–88.
63. Arriagada PV, Marzloff K, Hyman BT. Distribution of Alzheimer-type pathologic changes in nondemented elderly individuals matches the pattern in Alzheimer's disease. *Neurology*. 1992;42(9):1681.
64. Bachiller S, Jiménez-Ferrer I, Paulus A, Yang Y, Swanberg M, Deierborg T, Boza-Serrano A. Microglia in Neurological Diseases: A Road Map to Brain-Disease Dependent-Inflammatory Response. *Front Cell Neurosci*. 2018;12:488.
65. Raven EP, Lu PH, Tishler TA, Heydari P, Bartzokis G. Increased iron levels and decreased tissue integrity in hippocampus of Alzheimer's disease detected in vivo with magnetic resonance imaging. *J Alzheimers Dis*. 2013;37(1):127–36.
66. Falangola MF, Lee S-P, Nixon RA, Duff K, Helpen JA. Histological co-localization of iron in A $\beta$  plaques of PS/APP transgenic mice. *Neurochem Res*. 2005;30(2):201–5.
67. Sayre LM, Perry G, Harris PLR, Liu Y, Schubert KA, Smith MA. In situ oxidative catalysis by neurofibrillary tangles and senile plaques in Alzheimer's disease. *J Neurochem*. 2000;74(1):270–9.
68. Falangola MF, Dyakin VV, Lee SP, Bogart A, Babb JS, Duff K, et al. Quantitative MRI reveals aging-associated T2 changes in mouse models of Alzheimer's disease. *NMR Biomed*. 2007;20(3):343–51.
69. Bartzokis G, Sultzer D, Mintz J, Holt LE, Marx P, Phelan CK, et al. In vivo evaluation of brain iron in Alzheimer's disease and normal subjects using MRI. *Biol Psychiatry*. 1994;35(7):480–7.
70. Helpen JA, Lee SP, Falangola MF, Dyakin VV, Bogart A, Ardekani B, et al. MRI assessment of neuropathology in a transgenic mouse model of Alzheimer's disease. *Magn Reson Med*. 2004;51(4):794–8.
71. Qin Y, Zhu W, Zhan C, Zhao L, Wang J, Tian Q, et al. Investigation on positive correlation of increased brain iron deposition with cognitive impairment in Alzheimer disease by using quantitative MR R2' mapping. *J Huazhong Univ Sci Technol*. 2011;31(4):578.
72. Teipel SJ, Kaza E, Hadlich S, Bauer A, Brüning T, Plath A-S, et al. Automated detection of amyloid- $\beta$ -related cortical and subcortical signal changes in a transgenic model of Alzheimer's disease using high-field MRI. *J Alzheimers Dis*. 2011;23(2):221–37.
73. Savory J, Ghribi O, Herman MM. Is amyloid  $\beta$ -peptide neurotoxic or neuroprotective and what is its role in the binding of metal ions? *Neurobiol Aging*. 2002;23(6):1089–92.
74. de Flores R, La Joie R, Chételat G. Structural imaging of hippocampal subfields in healthy aging and Alzheimer's disease. *Neuroscience*. 2015;309:29–50.
75. Jack CR, Lowe VJ, Senjem ML, Weigand SD, Kemp BJ, Shiung MM, et al. 11C PiB and structural MRI provide complementary information in imaging of Alzheimer's disease and amnesic mild cognitive impairment. *Brain*. 2008;131(3):665–80.

76. Stirling Meyer J, Huang J, Chowdhury MH. MRI confirms mild cognitive impairments prodromal for Alzheimer's, vascular and Parkinson-Lewy body dementias. *J Neurol Sci.* 2007;257(1–2):97–104.
77. Mitchell AJ, Shiri-Feshki M. Rate of progression of mild cognitive impairment to dementia – meta-analysis of 41 robust inception cohort studies. *Acta Psychiatr Scand.* 2009;119(4):252–65.
78. Ben-Shlomo Y, Kuh D. A life course approach to chronic disease epidemiology: conceptual models, empirical challenges and interdisciplinary perspectives. *Int J Epidemiol.* 2002;31(2):285–93.
79. Hansson O, Zetterberg H, Buchhave P, Londos E, Blennow K, Minthon L. Association between CSF biomarkers and incipient Alzheimer's disease in patients with mild cognitive impairment: a follow-up study. *Lancet Neurol.* 2006;5(3):228–34.
80. Petten CV. Relationship between hippocampal volume and memory ability in healthy individuals across the lifespan: review and meta-analysis. *Neuropsychologia.* 2004;42(10):1394–413.

### Publisher's Note

Springer Nature remains neutral with regard to jurisdictional claims in published maps and institutional affiliations.

**Ready to submit your research? Choose BMC and benefit from:**

- fast, convenient online submission
- thorough peer review by experienced researchers in your field
- rapid publication on acceptance
- support for research data, including large and complex data types
- gold Open Access which fosters wider collaboration and increased citations
- maximum visibility for your research: over 100M website views per year

**At BMC, research is always in progress.**

Learn more [biomedcentral.com/submissions](https://biomedcentral.com/submissions)

