



Tejerina-Arreal , M., Parker, C., Paget, A. R., Henley, W., Logan, S., Emond, A. M., & Ford, T. (2020). Child and adolescent mental health trajectories in relation to exclusion from school from the Avon Longitudinal Study of Parents and Children (ALSPAC). *Child and Adolescent Mental Health*. <https://doi.org/10.1111/camh.12367>

Publisher's PDF, also known as Version of record

License (if available):  
CC BY

Link to published version (if available):  
[10.1111/camh.12367](https://doi.org/10.1111/camh.12367)

[Link to publication record in Explore Bristol Research](#)  
PDF-document

This is the final published version of the article (version of record). It first appeared online via Wiley at <https://doi.org/10.1111/camh.12367>. Please refer to any applicable terms of use of the publisher.

## University of Bristol - Explore Bristol Research

### General rights

This document is made available in accordance with publisher policies. Please cite only the published version using the reference above. Full terms of use are available: <http://www.bristol.ac.uk/red/research-policy/pure/user-guides/ebr-terms/>

# Child and adolescent mental health trajectories in relation to exclusion from school from the Avon Longitudinal Study of Parents and Children

María Tejerina-Arreal<sup>1</sup>, Claire Parker<sup>1</sup>, Amelia Paget<sup>2</sup>, William Henley<sup>1</sup>, Stuart Logan<sup>1</sup>, Alan Emond<sup>3</sup> & Tamsin Ford<sup>4</sup>

<sup>1</sup>College of Medicine and Health, University of Exeter, Exeter,

<sup>2</sup>Musgrove Park Hospital, Taunton,

<sup>3</sup>Bristol Medical School, University of Bristol, Bristol,

<sup>4</sup>Department of Psychiatry, University of Cambridge, Cambridge, UK

**Background:** As the prevalence of childhood mental health conditions varies by age and gender, we explored whether there were similar variations in the relationship between psychopathology and exclusion from school in a prospective UK population-based birth cohort. **Method:** The Avon Longitudinal Study of Parents and Children collected reports of exclusion at 8 years and 16 years. Mental health was assessed at repeated time points using the Strengths and Difficulties Questionnaire (SDQ). **Results:** Using adjusted linear mixed effects models, we detected a nonlinear interaction between exclusion and age related to poor mental health for boys [adjusted coefficient 1.13 (95% confidence interval 0.55–1.71)] excluded by age 8, but not for girls. The SDQ scores of boys who were excluded in primary school were higher than their peers from age 3, and increasingly diverged over time. As teenagers, these interactions appeared for both genders [boys' adjusted coefficient 0.18 (0.10–0.27); girls 0.29 (0.17–0.40)]. For teenage girls, exclusion by 16 was followed by deteriorating mental health. Family adversity predicted exclusion in all analyses. **Conclusion:** Prompt access to effective intervention for children in poor mental health may improve both mental health and access to education.

## Key Practitioner Message

- Children who were subsequently excluded from school often faced family adversity and had poor mental health, which suggests the need for an interdisciplinary response and a multiagency approach.
- Poor mental health may contribute to and result from exclusion from school, so both mental health and education practitioners have a key role to play.
- Boys who enter school with poor mental health are at high risk of exclusion in primary school, which prompt assessment and intervention may prevent.
- Both boys and girls who are excluded between the ages of 15 and 16 years may have poor, and in the case of girls, deteriorating, mental health.

**Keywords:** Avon Longitudinal Study of Parents and Children; school exclusion; child psychopathology; gender differences

## Introduction

The role of schools in children's mental health is a current policy focus in the U.K. (Department of Health & Social Care & Department for Education, 2018). Excluded pupils are more likely to suffer long-term mental health problems, although there are heated debates about the direction of causality (Gill, 2017; Hemphill et al., 2010). Prospectively collected data at population level offer an opportunity to study temporal relationships between poor mental health and exclusion from school, but given that the latter is uncommon, sufficiently large data sets are rare. Several studies suggested a strong relationship between psychiatric disorder and exclusion from school (Bowman-Perrott et al., 2011; Ford et al., 2012; Paget et al., 2018; Parker et al., 2016,

2018; Patton et al., 2014; Whear et al., 2013). Analyses of data from a nationally representative population sample suggested a bidirectional relationship between exclusion and poor mental health (Ford et al., 2018), indicating that effective intervention to support the learning and mental health of children who struggle with school could prevent both future mental disorders and exclusions (Beckett et al., 2010).

Children excluded from school often face multiple vulnerabilities; analysis of the Avon Longitudinal Study of Parents and Children (ALSPAC) demonstrated that exclusion was more likely among children of lower socioeconomic status, boys and those with language difficulties, lower educational attainment or special educational needs (SEN; Paget et al., 2018). Family characteristics, such as poor parental mental health and engagement with

education, also predicted exclusion. Children who were subsequently excluded were more likely to have a psychiatric disorder, behavioural difficulties and social communication problems, as well as involvement in bullying as a perpetrator or victim and poor teacher-pupil relationships.

The onset and pattern of mental health conditions vary by both age and gender (Cohen et al., 1993; Merikangas et al., 2010; Wesselhoeft et al., 2015). Boys are more likely to develop attention deficit hyperactivity disorder (ADHD) and autistic spectrum conditions (ASC), which mostly present in childhood, as well as conduct and oppositional disorders (Jensen & Steinhausen, 2015; Zahn-Waxler, Shirtcliff & Marceau, 2008). These externalising disorders often impair children's ability to cope with school and predicted exclusion in the three-year follow-up of the 2004 British Child and Adolescent Mental Health Survey (Parker et al., 2018). Furthermore, emotional disorders display a male preponderance before the age of 12 years and a female preponderance thereafter (Rutter, Caspi, & Moffitt, 2003; Sadler et al., 2018; Wesselhoeft et al., 2015; Zahn-Waxler et al., 2008).

Improved understanding of the mental health trajectories of children who are subsequently excluded could assist education and mental health practitioners to better target assessment and interventions. The examination of mental health trajectories related to exclusion is important to disentangle the influence of mental health and exclusion on each other. The longitudinal perspective of the ALSPAC data source offers an excellent opportunity compared with retrospective or cross-sectional data to study these trajectories. We aimed to undertake an exploratory analysis of mental health before and after exclusion from school in a prospectively studied birth cohort. Given the gender and age differences in the pattern of mental health conditions and exclusion from school, we studied trajectories separately for boys and girls, separated into primary and secondary school ages.

## Methods

Ethical approval for the study was obtained from the ALSPAC Ethics and Law Committee and the Local Research Ethics Committees as the Peninsula College of Medicine and Dentistry Research Ethics Committees (11/09/120).

### Sample

Avon Longitudinal Study of Parents and Children is an ongoing longitudinal birth cohort study that recruited 14,541 pregnant women resident in Avon, South West England, between April 1991 and December 1992, with 13,988 alive at 1 year old (Boyd et al., 2013). The sample and phases of enrolment are described in the cohort profile papers (Boyd et al., 2013; Fraser, et al., 2013). The study website contains details of all the data that are available through a fully searchable data dictionary and variable search tool <http://www.bristol.ac.uk/alspac/researchers/ourdata/>. Version number for the data used is B1119.

This analysis is based on 8248 children with data on exclusion at 8 years (56% of the total cohort alive at 1 year) and 4482 with data on exclusion at 16 years.

### Measures

**Mental health.** Mental health was measured using the Strengths and Difficulties Questionnaire (SDQ, Goodman, 2001), a validated questionnaire for common childhood psychopathology with parallel versions for parents, teachers and children aged 11 years or more (Cronbach alpha .73, test-retest reliability of .62). It comprises 25 statements that contribute to

five subscales, which measure emotional symptoms, conduct problems, hyperactivity/inattention, peer problems and prosocial behaviour. A total difficulties score is derived by summing the subtotals of the first four subscales and ranges from 0 to 40; higher score indicates greater distress. The SDQ was completed by parents at 3, 6, 8, 9, 11, 13 and 16 years old.

**Exclusion from school. Exclusion by 8 years.** When the child was 8 years 7 months old, mothers were asked if their child had ever been excluded from school, creating a binary variable of 'Yes' or 'No' ( $n = 53$ ,  $n = 8195$ , respectively). All others were coded as missing data, which included those who did not complete the question ( $n = 6443$ ).

**Exclusion at 16 years.** At 16 years old, mothers and young people were asked separately about fixed term and permanent exclusions from school in the past 12 months. An overall binary variable was derived: coded as 'Yes' if either the young person or parent reported fixed term or permanent exclusion ( $n = 391$ ), or 'No' if both reported no exclusions ( $n = 4091$ ). Questionnaires not sent or completed were coded as missing ( $n = 10,209$ ).

**Confounders and adjusting the models.** The Family Adversity Index (FAI) focused on the first 2 years of the index child's life and used in this study to control for the impact of multiple confounding factors (Steer et al., 2004). It included 18 items about age of the mother at pregnancy, housing, mother's education, financial difficulties, partner relationship status, support and cruelty, family size and care, social network, parent affective disorder, drug's addiction and crime. Total FAI score was gained by summing all 18 items, with higher scores indicating greater family adversity.

### Statistical analysis

Analyses were conducted using Stata version 15.0 (StataCorp, 2017) and were completed separately for boys and girls in relation to exclusion by age 8 and age 16. Linear mixed effect models for SDQ total difficulties score trajectories were executed and adjusted for FAI, SEN and ethnicity as potential confounders (Paget et al., 2018). Using backwards stepwise regression, based on coefficient size and standard errors, variables were removed to build the final models. All analyses (Stata do-files) are available at <https://github.com/MariaTejerina-Arreal/trajectories/> <https://doi.org/10.5281/zenodo.3531590>.

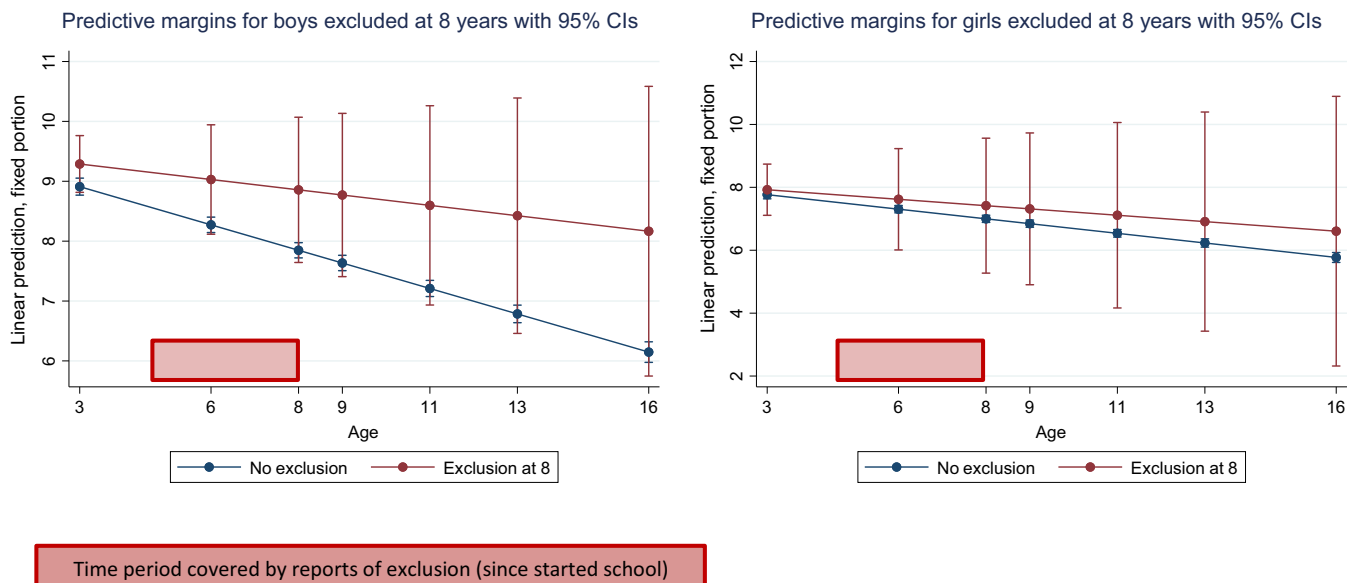
Mental health (SDQ) parent's report at the seven age points mentioned above accounted in the models and was tested in relation to exclusion at 8 and 16 years.

Linear predictions from the models with 95% confidence intervals were plotted to visualise these trajectories, in which the time period covered by reports of exclusions is specified (red boxes in Figures 1 and 2). Predictive margins assess the predicted level of SDQ total difficulties score based on change on age and the difference in margins between those with and without reports of exclusion from school.

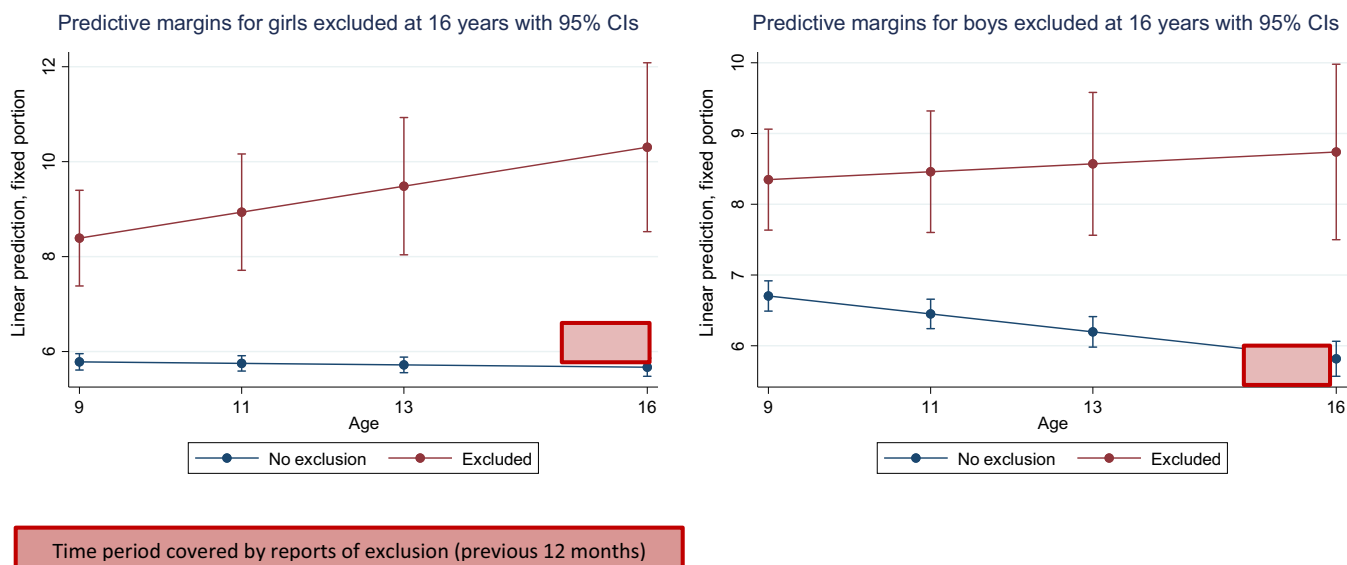
## Results

A full description of the characteristics of children who were and were not excluded is available from Paget et al. (2018). Main factors associated with exclusion at both time points included male gender, lower socioeconomic status, maternal psychopathology, social communication difficulties, language difficulties, antisocial activities, bullying/being bullied, lower parental engagement with education, poor relationship with teacher, low educational attainment and special educational needs.

Reassuringly few children ( $n = 53/8195$ ) were excluded by 8 years of age; of these, only 13 were girls. At 16 years, 391 young people were excluded from school (391/4091): 145 girls and 246 boys. The remaining 3731 children had no reported exclusion, while 9



**Figure 1.** Trajectories (3–16 years) of parent-reported SDQ total difficulties score for boys and girls excluded or not from school by 8 years



**Figure 2.** Trajectories (9–16 years) of parent-reported SDQ total difficulties score for boys and girls excluded or not from school by 16 years

had reported exclusions at both 8 and 16 years and were included in both analyses.

#### *Mental Health (SDQ) trajectories between 3 and 16 years in boys and girls excluded or not excluded from school by aged 8*

There were strong unadjusted associations between exclusion from school by 8 years and SDQ total difficulties score between the age of 3–16 years [coefficient 4.91 (CI: 3.80–6.02)  $p < .001$ ]. This trend continued when the analysis focused only on children aged 9–16 years who had been excluded from school by 8 years compared to children who had not been excluded [coefficient 5.23 (3.99–6.46)  $p < .001$ ].

There was no statistically significant difference in the levels of psychopathology in girls between those who had or had not been excluded by 8 years, while boys who had been excluded had significantly higher levels of psychopathology from age three, with a peak in the latter

years of primary school. (See Figure 1 and Table 1) increasingly diverged from their peers over time. There was a significant nonlinear interaction between age in relation to mental health and exclusion at 8 years old for boys, but not for girls (Table 1). The FAI predicted poor mental health for boys and girls excluded from school by age 8.

Special educational needs was not associated in any of the models, while ethnicity was only associated for boys excluded at 8 years. We also explored quadratic age exclusion interactions in all the models, but this was only significant for boys excluded at 8 years (Table 1).

#### *Mental health (SDQ) trajectories between 9 and 16 years in boys and girls excluded versus not excluded from school between the age of 15 and 16 years*

Unadjusted analysis revealed higher mean parent-reported SDQ total difficulties score from 9 to 16 years for young people who had been excluded from school at 16

**Table 1.** Parent-reported SDQ total difficulties trajectories between 3 and 16 years in boys and girls who were or were not excluded from school by 8 years of age

Exclusion at 8 years <i>N</i> with data 8248				
	Girls	<i>N</i>	Boys	<i>N</i>
		4136 No 13 Yes		4159 No 40 Yes
SDQ	Adjusted Coef (95% CI)	<i>p</i> -Value	Adjusted Coef (95% CI)	<i>p</i> -Value
Age	-.53 (-0.59 to -0.48)	<.001	-.34 (-0.40 to 0.29)	<.001
Age squared	.02 (0.018 to 0.023)	<.001	.00 (0.00 to 0.01)	<.001
Exclusion	.74 (-3.5 to 4.9)	.733	.34 (-2.08 to 2.78)	.780
Exclusion × age interaction	-.18 (-1.1 to 0.8)	.715	1.13 (0.55 to 1.71)	<.001
Exclusion × age squared interaction	.01 (-0.04 to -0.07)	.630	-.06 (-0.08 to -0.03)	<.001
FAI (Family Adversity Index)	.61 (0.55 to 0.67)	<.001	.60 (0.55 to 0.67)	<.001

**Table 2.** Parent-reported SDQ total difficulties trajectories between 9 and 16 years in boys and girls who were or were not excluded from school by between the age of 15 and 16 years

Exclusion at 16 years <i>N</i> with data 4482				
	Girls	<i>N</i>	Boys	<i>N</i>
		2324 No 145 Yes		1767 No 246 Yes
SDQ	Adjusted Coef (95% CI)	<i>p</i> -Value	Adjusted Coef (95% CI)	<i>p</i> -Value
Age	-.02 (-0.04 to 0.00)	.187	-.12 (-0.15 to -0.10)	<.001
Exclusion	-1.24 (-2.77 to 0.29)	.111	.28 (-0.89 to 1.4)	.641
Exclusion × age interaction	.29 (0.17 to 0.40)	<.001	.18 (0.10 to 0.27)	<.001
FAI (Family Adversity Index)	.58 (0.50 to 0.66)	<.001	.57 (0.46 to 0.68)	<.001

compared with children who had not been excluded at this time point [coefficient 2.95 (2.52–3.38)  $p < .001$ ].

Although more children had experienced exclusion at 16, we found modest significant interactions between exclusion and age on mental health in the SDQ-adjusted models (Table 2) where exclusion was not significant in the prediction of psychopathology.

The mental health of girls excluded from school at 16 years appeared to be on a deteriorating trajectory compared with their peers not excluded. In contrast, mental health remained fairly stable for boys, although poorer predicted to their peers not excluded (Figure 2).

FAI predicted exclusion between 15 and 16 years for both genders.

Analyses on which selected models were based are available at <https://github.com/MariaTejerina-Arreal/trajectories/> <https://doi.org/10.5281/zenodo.3531590>.

## Discussion

We found age- and gender-specific differences in mental health trajectories in relation to school exclusion, with clear evidence of poor mental health prior to and after exclusion. For teenage girls, there was tentative evidence that their mental health continued to deteriorate following exclusion, consistent with findings that exclusion from school has a bidirectional relationship with childhood psychiatric disorder in a population sample of British school children followed for 3 years (Ford et al., 2018). This is particularly concerning given the high prevalence of mental health conditions detected in

teenage girls (Sadler et al., 2018) and recent reported increases in fixed term and permanent exclusions per school enrolment (Department for Education, 2018b).

It is also important to emphasise the strong and universal prediction of poor mental health by early family adversity, which echoes strong relationship between lower socioeconomic status and exclusion (Gill, 2017; Paget et al., 2018). Policies to support young families from deprived areas might therefore improve educational as well as health outcomes (Department of Education, 2016; Ryder, Edwards & Rix, 2017).

These results confirm well-established age and gender differences in childhood psychopathology (Sadler et al., 2018). Boys are more likely to experience disruptive behavioural and neurodevelopmental problems, most common in early childhood, which predictably interfere with early academic attainment and later educational outcomes (Wesselhoeft et al., 2015; Zbar, Surkan, Fombonne, & Melchior, 2016). Children with behavioural problems often have cognitive difficulties from preschool onwards and hence may struggle to learn to adapt their behaviour to the classroom context and experience other learning problems (Althoff et al., 2010; Galéra et al., 2012). Boys who were excluded from the early years of primary school started their school careers with significantly poorer mental health than their peers who were not subsequently excluded. The lack of similar differences in trajectory for girls at primary school was almost certainly explained by the extremely low number of girls who experienced exclusion by age 8 and the resulting lack of power for analysis. While there was no statistically significant relationship (see Figure 1), girls



excluded by age 8 also had consistently elevated levels of poor mental health.

While the number of exclusions increased in both genders between the ages of 8 and 16 years, the increase for girls was particularly notable. Girls are at higher risk of emotional disorders and difficulties in late childhood and adolescence (Cohen et al., 1993; Sadler et al., 2018; Wesselhoeft et al., 2015) and tend to experience a longer duration of emotional problems (Essau et al., 2010). Emotional disorders are less likely to be recognised by parents or teachers, and unrecognised psychiatric disorder also carries an increased risk of exclusion from school (Department of Health & NHS England, 2014; Parker et al., 2018). Emotional disorders can influence attendance at school and academic attainment (Finning et al., 2019; Riglin, Petrides, Frederickson, & Rice, 2014), while associated irritability, apathy and poor concentration may provoke disciplinary problems. Previous research (Zbar et al., 2016) suggests that children with emotional problems were nearly twice as likely to experience academic failure by adolescence than their healthier peers. Finally, exclusion from school, particularly if permanent, disrupts peer relationships and self-image and may increase social isolation, all of which may predispose to the development of anxiety or depression.

Our findings emphasise the complex inter-relationship between poor mental health and exclusion from school. Children educated in alternative provision are less likely to achieve good grades (Department of Education, 2018a), and more likely to become NEET (Not in Education, Employment or Training) after the age of 16 and in contact with the criminal justice system (Department of Education, 2018b). However, properly resourced alternative provision offers the opportunity of transformative education, but requires adequately trained and supported teachers for children facing trauma and mental health problems alongside learning needs (Gill, 2017).

It is important to avoid therapeutic nihilism. Early and effective assessment and remediation of both mental health and educational needs may improve outcomes in both domains. There are effective evidence-based interventions for many mental health conditions (Weisz et al., 2017); sadly, however, only a small proportion of children with clinically significant mental health conditions access mental health services (Ford, Hamilton, Meltzer & Goodman, 2007; Mandalia, et al., 2018). Given the deteriorating trajectory, our findings suggest these children should be our first priority for intervention.

Disruptive behaviour is particularly difficult to manage within the school. School-based responses are important and effective for school-based problems (Axford et al., 2019; Weisz et al., 2017). Given that conduct disorder is one of the commonest childhood mental health conditions (Sadler et al., 2018) and predicts to all adult mental health conditions (Kim-Cohen et al., 2003), we should be ensuring teachers are adequately trained in classroom management and that parents who are concerned about their child's behaviour have easy access to parent training courses.

A developing evidence-base suggests that training teachers to manage behaviour using strategies that incorporate positive reinforcement reduces behavioural problems and improves mental health among primary school pupils (Moore et al., 2019; Nye, Melendez-Torres

& Gardner, 2018). Individualised approaches seem most effective for children with severely challenging behaviour, but there is insufficient research into behavioural management in secondary schools (Moore et al., 2019). A recent multimethod systematic review of school-based psychosocial interventions for children with ADHD demonstrated small to medium effect sizes for both educational attainment and ADHD symptoms, in addition to suggesting that individually tailored programmes and those that focus on improving emotional regulation were the most effective (Moore et al., 2019). Similarly, another systematic review suggests that school-based programmes can reduce exclusions (Valdebenito et al., 2018).

The additional demands placed on schools' staff time and resources are huge (Newlove-Delgado et al., 2015; Snell et al., 2013). There are few economic evaluations of school-based interventions, but training a teacher potentially benefits all the children that they subsequently teach and will likely be significantly more cost-effective than intervening directly with successive cohorts of children. Estimates for each educational life-time cohort of permanently excluded pupils run to £2.1 billion for every year's excluded cohort to the education, health, benefits and criminal justice sectors. Yet, as the full extent of exclusion greatly exceeds official figures, the true cost is likely to be many multiples of this estimate (Gill, 2017). Encouragingly, worldwide there is an increasing focus on school-based mental health services and interventions (Murphy et al., 2017). Laying aside the individual costs of poor mental health and exclusion from school, if such services and interventions were adequately resourced and implemented, they may save considerable sums from health, education and criminal justice budgets.

## Strengths and limitations

Population-based quantitative research on exclusion from school in relation to mental health remains relatively rare, as there are few suitable data sets. This analysis benefited from a large population-based birth cohort that was studied over an extended period, as well as validated measures.

However, there are methodological considerations. As with all secondary analyses, we were restricted by the available data. We were unable to differentiate between fixed term (suspension) and permanent (expulsion) exclusions, but would have almost certainly lacked statistical power to explore trajectories for permanent exclusion. In addition, exclusion data were only collected at two time points, and the questions at each time point differed. The lack of data on exclusions between the ages of 8 and 14 years is likely to explain the low number of pupils with exclusion reported at both time points. Despite these limitations, ALSPAC is one of the best data sources available on this vulnerable population.

Attrition from ALSPAC was substantial and systematic; children who dropped out were more likely to suffer from disruptive behaviour disorder and experience family adversity; inevitably, we lacked data on some children from the original cohort who experienced exclusion. This would lead to underestimation of the prevalence of exclusion and reduce statistical power to detect associations. Previous research on the impact of

attrition in ALSPAC in relation to behavioural difficulties (Wolke et al., 2009) suggests that our conclusions would be unlikely to change even if complete data were available. The data from ALSPAC relate to young people who attended school between the mid-1990s and early 21st century, so may not generalise to current influences on mental health and function at school. All of the participating young people were born in one particular region of the UK, as thus findings may not generalise to substantially different populations in the UK and elsewhere.

Finally, we were reliant on parental and young person's report about exclusion; while recall is thought to be good for important and rare events, social desirability may influence informants' willingness to report them (Althubaiti, 2016). We lacked data from administrative records to triangulate their responses against. These data should be made more easily accessible to researchers in future data collection. Administrative records have their own problems of accuracy; there is a growing concern about schools removing students from their register in ways which would not show up in official exclusion statistics (Children's Commissioner, 2019). The number of children educated in the alternative provision is suspected to greatly exceed the officially reported number of permanent exclusions (Gill, 2017).

## Conclusions

Our findings provide further evidence of the association between mental health and exclusion from school and emphasise the need for a multidisciplinary response to support these highly vulnerable young people. Exclusion from school goes beyond education. Health and mental health professionals have a key role in supporting pupils' who struggle with school and preventing the prospective societal and individual burden associated with exclusion.

## Acknowledgements

The UK Medical Research Council and Wellcome Trust (Grant ref: 092731) and the University of Bristol provide core support for ALSPAC. This publication is the work of the authors, and they will serve as guarantors for the contents of this paper. C.P. commenced this work as part of her PhD, which was funded by a stipend provided by the National Institute for Health Research (NIHR) Collaboration for Leadership in Applied Health Research and Care (CLAHRC) for the South West Peninsula. The views expressed in this publication are those of the author(s) and not necessarily those of the NHS, the NIHR or the Department of Health in England.

The authors are extremely grateful to all the families who took part in this study, the midwives for their help in recruiting them and the whole ALSPAC team, which includes interviewers, computer and laboratory technicians, clerical workers, research scientists, volunteers, managers, receptionists and nurses. The authors have declared that they have no competing or potential conflicts of interest.

## Ethical approval

Ethical approval for the study was obtained from the ALSPAC Ethics and Law Committee and the Local Research Ethics Committees as the Peninsula College of Medicine and Dentistry Research Ethics Committees (11/09/120).

## Correspondence

María Tejerina-Arreal, Institute of Health Research, College of Medicine and Health, University of Exeter, College House, Magdalen Road, Exeter EX1 2LU, UK; Email: M.Tejerina-Arreal@exeter.ac.uk

## References

- Althoff, R.R., Verhulst, F.C., Rettew, D.C., Hudziak, J.J., & Van der Ende, J. (2010). Adult outcomes of childhood dysregulation: A 14-year follow-up study. *Journal of the American Academy of Child Adolescent Psychiatry*, 49, 1105–1116.
- Althubaiti, A. (2016). Information bias in health research: definition, pitfalls, and adjustment methods. *Journal of multidisciplinary healthcare*, 9, 211–217.
- Axford, N., Berry, V., Lloyd, J., Moore, D., Rogers, M., Hurst, A., ... & Minton, J. (2019). *How can schools support parents' engagement in their children's learning? Evidence from Research and Practice*. London: Education Endowment Foundation. Report available from: <https://educationendowmentfoundation.org.uk/evidence-summaries/evidencereviews/parental-engagement/>
- Beckett, C., Beecham, J., Doolan, M., Ford, T., Kallitsoglou, A., Scott, S., ... & HCA Study Teams (2010). *Which type of parenting programme best improves child behaviour and reading? The Helping Children Achieve Trial*. London: Department for Education.
- Bowman-Perrott, L., Benz, M.R., Hsu, H.Y., Kwok, O.M., Eisterhold, L.A., & Zhang, D. (2011). Patterns and predictors of disciplinary exclusion over time: An analysis of the SEELS national data set. *Journal of Emotional and Behavioral Disorders*, 21, 83–96.
- Boyd, A., Golding, J., Macleod, J., Lawlor, D.A., Fraser, A., Henderson, J., ... & Davey Smith, G. (2013). Cohort profile: The 'Children of the 90s'—the index offspring of the Avon Longitudinal Study of Parents and Children. *International Journal of Epidemiology*, 42, 111–127.
- Children's Commissioner (2019). *Skipping school: Invisible children. How children disappear from England's schools*. London: Children Commissioner for England. Available from: <https://www.childrenscommissioner.gov.uk/wp-content/uploads/2019/02/cco-skipping-school-invisible-children-feb-2019.pdf>
- Cohen, P., Cohen, J., Kasen, S., Velez, C.N., Hartmark, C., Johnson, J., ... & Streuning, E.L. (1993). An epidemiological study of disorders in late childhood and adolescence: I. Age- and gender-specific prevalence. *Journal of Child Psychology and Psychiatry and Allied Disciplines*, 34, 851–867.
- Department for Education (2016). *Children missing education: Statutory guidance for local authorities*. London: Author.
- Department for Education (2018b). *Permanent and fixed-period exclusions in England: 2016–2017*. London: Author. Published 19 July 2018.
- Department of Education (2018a). *Creating opportunity for all: Our vision for alternative provision*. Ref: DFE-00072-2018. London: Author. Published 16 March 2018.
- Department of Health & Social Care & Department for Education (2018). *Government response to the consultation on transforming children's and young peoples mental health provision: A green paper and next steps*. London: Author.
- Department of Health, & NHS England (2014). *Future in mind: promoting, protecting and improving our children and young people's mental health and wellbeing*. London: Author.
- Essau, C.A., Lewinsohn, P.M., Seeley, J.R., & Sasagawa, S. (2010). Gender differences in the developmental course of depression. *Journal of Affective Disorders*, 127, 185–190.
- Finning, K., Ukoumunne, O.C., Ford, T., Danielsson-Waters, E., Shaw, L., Romero De Jager, I., & Moore, D.A. (2019). The association between child and adolescent depression and poor attendance at school: A systematic review and meta-analysis. *Journal of Affective Disorders*, 245, 928–938.
- Ford, T., Edwards, V., Sharkey, S., Ukoumunne, O.C., Byford, S., Norwich, B., & Logan, S. (2012). Supporting teachers and

- children in schools: The effectiveness and cost-effectiveness of the incredible years teacher classroom management programme in primary school children: a cluster randomised controlled trial, with parallel economic and process evaluations. *BMC Public Health*, 12, 719–10.
- Ford, T., Hamilton, H., Meltzer, H., & Goodman, R. (2007). Child mental health is everybody's business; the prevalence of contacts with public sector services by the types of disorder among British school children in a three year period. *Child and Adolescent Mental Health*, 12, 13–20.
- Ford, T., Parker, C., Salim, J., Goodman, R., Logan, S., & Henley, W. (2018). The relationship between exclusion from school and mental health: A secondary analysis of the British Child and Adolescent Mental Health Surveys 2004 and 2007. *Psychological Medicine*, 48, 629–641.
- Fraser, A., Macdonald-Wallis, C., Tilling, K., Boyd, A., Golding, J., Davey Smith, G., ... & Lawlor, D.A. (2013). Cohort profile: The Avon Longitudinal Study of Parents and Children: ALSPAC mothers cohort. *International Journal of Epidemiology*, 42, 97–110.
- Galéra, C., Bouvard, M.P., Lagarde, E., Touchette, E., Fombonne, E., & Melchior, M. (2012). Attention problems in childhood and socioeconomic disadvantage 18 years later: the TEMPO cohort. *British Journal of Psychiatry*, 201, 20–25.
- Gill, K. (2017). *Making the difference: Breaking the link between school exclusion and social exclusion*. London: Institute of Public Policy Research (IPPR). Available from <http://www.ippr.org/publications/making-the-difference>.
- Goodman, R. (2001). Psychometric properties of the strengths and difficulties questionnaire. *Journal of the American Academy of Child and Adolescent Psychiatry*, 40, 1337–1345.
- Hemphill, S.A., Toumbourou, J.W., Smith, R., Kendall, G.E., Rowland, B., Freiberg, K., & Williams, J.W. (2010). Are rates of school suspension higher in socially disadvantaged neighbourhoods? An Australian study. *Health Promotion Journal of Australia*, 21, 12–18.
- Jensen, C.M., & Steinhausen, H.C. (2015). Comorbid mental disorders in children and adolescents with attention-deficit/hyperactivity disorder in a large nationwide study. *ADHD Attention Deficit Hyperactivity Disorders*, 7, 27–38.
- Kim-Cohen, J., Caspi, A., Moffitt, T.E., Harrington, H., Milne, B.J., & Poulton, R. (2003). Prior juvenile diagnoses in adults with mental disorder: Developmental follow-back of a prospective-longitudinal cohort. *Archives of General Psychiatry*, 60, 709–717.
- Mandalia, D., Ford, T., Hill, S., Sadler, K., Vizard, T., Goodman, A., ... & McManus, S. (2018). *Mental Health of Children and Young People in England, 2017; Services, Informal Support and Education*. London: Health and Social Care Information Centre.
- Merikangas, K.R., He, J., Burstein, M., Swanson, S.A., Avenevoli, S., Cui, L., ... & Swendsen, J. (2010). Lifetime prevalence of mental disorders in US adolescents: Results from the National Comorbidity Study-Adolescent Supplement (NCS-A). *Journal of the American Academy of Child and Adolescent Psychiatry*, 49, 980–989.
- Moore, D., Benham-Clarke, S., Kenchington, R., Boyle, C., Ford, T., Hayes, R., & Rogers, M. (2019). *Review of evidence on behaviour*. London: Education Endowment Foundation, Crown Copyright, under review.
- Murphy, J.M., Abel, M.R., Hoover, S.A., Jellinek, M., & Fazel, M. (2017). Scope, scale, and dose of the World's Largest School-Based Mental Health Programs. *Harvard Review of Psychiatry*, 25, 218–228.
- Newlove-Delgado, T., Moore, D., Ukoumunne, O.C., Stein, K., & Ford, T. (2015). Mental health related contact with education professionals in the British Child and Adolescent Mental Health Survey 2004. *The Journal of Mental Health Training, Education and Practice*, 10, 159–169.
- Nye, E., Melendez-Torres, G.J., & Gardner, F. (2018). Context and Implications Document for: Mixed methods systematic review on effectiveness and experiences of the Incredible Years Teacher Classroom Management programme. *Review of Education*, 7, 631–669.
- Paget, A., Parker, C., Heron, J., Logan, S., Henley, W., Emon, A., & Ford, T. (2018). Which children and young people are excluded from school? Findings from a large British birth cohort study, the Avon Longitudinal Study of Parents and Children (ALSPAC). *Child Care Health Development*, 44, 285–296.
- Parker, C., Marlow, R., Kastner, M., May, F., Mitrofan, O., Henley, W., & Ford, T. (2016). The Supporting Kids avoiding Problems (SKIP) study: Relationships between school exclusion, psychopathology, development and attainment. *Journal of Children's Services*, 11, 91–110.
- Parker, C., Tejerina-Arreal, M., Henley, W., Goodman, R., Logan, S., & Ford, T. (2018). Are children with unrecognised psychiatric disorders being excluded from school? A secondary analysis of the British Child and Adolescent Mental Health Surveys 2004 and 2007. *Psychological Medicine*, 49, 2561–2572.
- Patton, G.C., Coffey, C., Romaniuk, H., Mackinnon, A., Carlin, J.B., Degenhardt, L., ... & Moran, P. (2014). The prognosis of common mental disorders in adolescents: a 14-year prospective cohort study. *The Lancet*, 383, 1404–1411.
- Riglin, L., Petrides, K.V., Frederickson, N., & Rice, F. (2014). The relationship between emotional problems and subsequent school attainment: A meta-analysis. *Journal of Adolescence*, 37, 335–346.
- Rutter, M., Caspi, A., & Moffitt, T.E. (2003). Using sex differences in psychopathology to study causal mechanisms: unifying issues and research strategies. *Journal of Child Psychology & Psychiatry*, 44, 1092–1115.
- Ryder, R., Edwards, A., & Rix, K. (2017). *Children missing education: Families' experiences*. London: National Children's Bureau.
- Sadler, K., Vizard, T., Ford, T., Goodman, A., Goodman, R., & McManus, S. (2018). *The Mental Health of Children and Young People in England 2017: Trends and characteristics*. London: Health and Social Care Information Centre.
- Snell, T., Knapp, M., Healey, A., Guglani, S., Evans-Lacko, S., Fernandez, J.L., Meltzer, H., & Ford, T. (2013). Economic impact of childhood psychiatric disorder on public sector services in Britain: estimates from national survey data. *Journal of Child Psychology and Psychiatry*, 54, 977–985.
- StataCorp (2017). *Stata statistical software: Release 15*. College Station, TX: Author.
- Steer, C., Wolke, D., & Team, A.S. (2004). An index of family adversity. 3rd Conference of Epidemiological Longitudinal Studies in Europe. University of Bristol.
- Valdebenito, S., Eisner, M., Farrington, D.P., Ttofi, M.M., & Sutherland, A. (2018). *School-based interventions for reducing disciplinary exclusion: A systematic review (vol. 1)*. Oslo, Norway: Campbell Collaboration.
- Weisz, J.R., Kuppens, S., Ng, M.Y., Eckstein, D.U., Ugueto, A.M., Vaughn-Coaxum, R., ... & Fordwood, S.R. (2017). What five decades tell us about the effects of youth psychotherapy: A multilevel meta-analysis and implications for science and practice? *American Psychologist*, 72, 79–117.
- Wesselhoeft, R., Pedersen, C.B., Mortensen, P.B., Mors, O., & Bilenberg, N. (2015). Gender-age interaction in incidence rates of childhood emotional disorders. *Psychological Medicine*, 45, 829–839.
- Whear, R., Thompson-Coon, J., Boddy, K., Ford, T., Racey, D., & Stein, K. (2013). The effect of teacher-led interventions on social and emotional behaviour in primary school children: a systematic review. *British Educational Research Journal*, 39, 383–420.
- Wolke, D., Waylen, A., Samara, M., Steer, C., Goodman, R., Ford, T., & Lamberts, K. (2009). Selective drop-out in longitudinal studies and non-biased prediction of behaviour disorders. *British Journal of Psychiatry*, 195, 249–256.
- Zahn-Waxler, C., Shirtcliff, E.A., & Marceau, K. (2008). Disorders of childhood and adolescence: gender and psychopathology. *Annual Review of Clinical Psychology*, 4, 275–303.
- Zbar, A., Surkan, P.J., Fombonne, E., & Melchior, M. (2016). Early emotional and behavioral difficulties and adult educational attainment: An 18year follow-up of the TEMPO study. *European Child and Adolescent Psychiatry*, 25, 1141–1143.

Accepted for publication: 4 December 2019