



Dallaston, M., Fontelos, M., Herrada, M. A., Lopez-Herrera, J. M., & Eggers, J. G. (2021). Regular and complex singularities of the generalized thin film equation in two dimensions. *Journal of Fluid Mechanics*, 917, Article 2100286. <https://doi.org/10.1017/jfm.2021.286>

Peer reviewed version

License (if available):
CC BY-NC-ND

Link to published version (if available):
[10.1017/jfm.2021.286](https://doi.org/10.1017/jfm.2021.286)

[Link to publication record on the Bristol Research Portal](#)
PDF-document

This is the author accepted manuscript (AAM). The final published version (version of record) is available online via Cambridge University Press at <https://doi.org/10.1017/jfm.2021.286> . Please refer to any applicable terms of use of the publisher.

University of Bristol – Bristol Research Portal

General rights

This document is made available in accordance with publisher policies. Please cite only the published version using the reference above. Full terms of use are available:
<http://www.bristol.ac.uk/red/research-policy/pure/user-guides/brp-terms/>

Regular and complex singularities of the generalised thin film equation in two dimensions

M. C. Dallaston¹, M. A. Fontelos², M. A. Herrada³, J. M. Lopez-Herrera³, and J. Eggers⁴

¹ School of Mathematical Sciences, Queensland University of Technology, Brisbane, QLD, 4001, Australia

² Instituto de Ciencias Matemáticas, (ICMAT, CSIC-UAM-UCM-UC3M), C/ Serrano 123, 28006 Madrid, Spain

³E.S.I., Universidad de Sevilla, Camino de los Descubrimientos s/n 41092, Spain

⁴School of Mathematics, University of Bristol, Fry Building, Woodland Road, Bristol BS8 1UG, United Kingdom

(Received xx; revised xx; accepted xx)

We use a generalised version of the equation of motion for a thin film of liquid on a solid, horizontal substrate as a model system to study the formation of singularities in space dimensions greater than one. Varying both the exponent controlling long-ranged forces, as well as the exponent of the non-linear mobility, we predict the structure of the singularity as the film thickness goes to zero. The spatial structure of rupture may be either “pointlike” (approaching axisymmetry), or “quasi one-dimensional”, in which case a one-dimensional singularity is unfolded into two or higher space dimensions. The scaling of the profile with time may be either strictly self-similar (the “regular” case), or discretely self-similar and perhaps chaotic (the “irregular” case). We calculate the phase boundaries between these regimes, and confirm our results by detailed comparisons with time dependent simulations of the non-linear thin film equation in two space dimensions.

1. Introduction

Most of the past work on singularities has been focused on singularities in one spatial dimension. For example, in drop pinch-off one is often able to describe the dynamics in a lubrication-type description, reducing the problem to a single spatial variable z . The idea of self-similar solutions to this problem is that as the thickness h of the neck goes to zero, $h \propto t'^\alpha$ scales like a power law of the time distance t' to the singularity (Eggers 1993). Likewise, the axial size of the singularity is assumed to scale as $z \propto t'^\beta$ as $t' \rightarrow 0$.

Even in cases where a lubrication-type reduction is not possible, and the flow remains truly three-dimensional and axisymmetric (Chen & Steen 1997; Day *et al.* 1998; Cohen *et al.* 1999; Zhang & Lister 1999*a*; Eggers *et al.* 2020), the free surface shape still remains a function of one variable alone. Similarly, analytical descriptions of thin film rupture, using similarity solutions (Zhang & Lister 1999*b*; Witelski & Bernoff 2000; Craster & Matar 2009), have been confined to the one-dimensional case (i.e. rupture along ridges), or axisymmetric solutions. Indeed, nearly axisymmetric solutions have been observed in numerical simulations of the thin film equation (Oron 2000; Becker *et al.* 2003; Blossey 2012; Sharma & Verma 2004), even when starting from initial conditions which are not axisymmetric themselves.

Singular structures, however, appear much more generally in two- and three dimensional fields (Eggers 2018), for example in hydrodynamic turbulence (Frisch 1995), the

Euler equations (Grauer & Sideris 1991), or the non-linear Schrödinger equation (Nore *et al.* 1997). There has been little progress describing these complex, two- or three-dimensional structures analytically, although there is an expectation that they contain self-similar features as well.

There has been some progress to extend the method of similarity solutions to higher dimensions in some specific cases, for example the porous medium equation (Angenent *et al.* 2001; Aronson 2016), wave breaking of in a kinematic wave equation (Pomeau *et al.* 2008), the relativistic membrane equation (Eggers *et al.* 2015), in the dispersionless Kadomtsev-Petviashvili equation (Grava *et al.* 2016), and the formation of shocks in the compressible Euler equation (Eggers *et al.* 2017). Another example is the “natural focusing” of light (Nye 1999), by which a variety of higher dimensional singularities can be realised. However, a general picture of how singularities develop in higher dimensions is missing.

Another property of complex (turbulent) flows is that they exhibit not a single feature, such as the motion toward a singularity at a point, but a superposition of many features in a fractal arrangement. A possible such mechanism has been suggested for the Euler equation (Pumir *et al.* 1992), in which a self-similar solution becomes unstable to provide the seed for a new self-similar solution, a process which repeats itself on smaller and smaller scales. An explicit example of such “discrete self-similarity” has been described for the formation of a black hole, using the equations of general relativity (Choptuik 1993). Very recently the same phenomenon has been observed in the pinch-off of a drop of fluid, whose viscosity is much smaller than that of the surrounding fluid (Fontelos & Wang 2021).

An analytical framework to understand discrete self-similarity has recently been proposed in a study of the thin film equation, in which the interaction exponent of the surface forces was treated as variable (Dallaston *et al.* 2018). As the exponent is lowered, making interactions more long-ranged, the previously self-similar rupture solution becomes unstable, undergoing a Hopf bifurcation, at which a periodic orbit is born. Such a periodic solution in similarity space corresponds precisely to discrete self-similarity, where at each cycle a new structure is produced. The work in Dallaston *et al.* (2018) builds on that of Tseluiko *et al.* (2013), who developed a numerical continuation procedure to compute similarity solutions for a specific value of the interaction exponent, corresponding to London-van der Waals attraction.

In the present paper, we will provide a general framework for how singularities look like in higher dimensions. For a liquid film on a planar substrate, which we will be using as an example throughout this paper, two dimensions is the most obvious choice. In that case we start from the ansatz

$$h(x, y, t) = t'^{\alpha} H(\xi, \eta), \quad \xi = \frac{x'}{t'^{\beta}}, \quad \eta = \frac{y'}{t'^{\bar{\beta}}}, \quad (1.1)$$

where x' and y' are the distances to the location of the singularity, at x_0, y_0 . Throughout this paper, we will be referring to the two-dimensional case unless otherwise stated; however, our arguments are easily generalised to higher dimensions. If we disregard the dependence on y , (1.1) is the usual form of a one-dimensional similarity solution describing for example drop pinch-off, but now we allow another scaling in the transversal, y -direction. We find that there are two types of solutions. In the first type, which we call “pointlike”, the scaling is the same in both directions, and $\bar{\beta} = \beta$. A particular case are axisymmetric solutions, which have been found to describe many cases of rupture in the thin film equation (Zhang & Lister 1999*b*; Witelski & Bernoff 2000).

In the second type of solution, the solution varies more slowly in the transversal

direction, i.e. $\bar{\beta} < \beta$. We will see that in that case, the higher dimensional dynamics results from the unfolding of a one-dimensional singular solution in the sense of catastrophe theory (Arnold 1984; Nye 1999; Pomeau *et al.* 2008); these will be called “quasi one-dimensional solutions”. We will give a general criterion for the appearance of quasi one-dimensional solutions, separating them from cases where the singularity occurs in a pointlike fashion. This idea also applies when the one-dimensional solution is no longer self-similar, but discretely self-similar or even chaotic.

We illustrate our theory using the generalised thin film equation, in which both the interaction exponent m and the exponent of mobility n appear as free parameters. We represent the behaviour of singularities as a function of the two parameters in a phase plane. Owing to the attraction between the top and bottom of the film, starting from a small sinusoidal perturbation to the film thickness $h(x, y, t)$, h goes to zero in finite time, producing a singularity in which quantities like the pressure blow up. With our theory, we are able to delineate the transitions between quasi one-dimensional and pointlike singularities on the one hand, and simple self-similar solutions and irregular solutions on the other.

An essential element of the theory is the computation of similarity solutions, and their stability, using numerical continuation. Numerical continuation has been used extensively for the computation of invariant solutions in thin film hydrodynamics. We build directly on the recent work of Dallaston *et al.* (2018), wherein the highly nontrivial bifurcation structure of the generalised thin film equation was noted. Novel extensions in the present study compared to that work are the computation of asymmetric similarity solutions (which are stable in some parameter regimes, and therefore of interest), and the use of continuation to compute periodic orbits in the scaled time and space coordinate system in which a similarity solution corresponds to a steady state. While Dallaston *et al.* (2018) is an instance of numerical continuation being used to compute the stability of similarity solutions, the use of numerical continuation to compute stability of steady states has previously been applied in thin film models in Thiele & Knobloch (2003, 2004) and to the Orr-Sommerfeld equations of interfacial hydrodynamic models in Dallaston *et al.* (2016). In addition, the tracing of periodic solution branches via continuation has been applied previously in Lin *et al.* (2016), although in unscaled time and space.

To obtain a full picture of the dynamics of the film in two dimensions, and to compare with theory, we present detailed numerical simulations of the two-dimensional generalised thin film equation, which has been treated numerically before (Becker *et al.* 2003; Witelski & Bowen 2003; Becker & Grün 2005). Our main innovation is to implement a highly non-uniform, adaptive grid, so that the equation can be resolved over several orders of magnitude in scale, in order to study the self-similar structure of singular solutions. We developed two different numerical codes, one implemented in MATLAB, the other on the Basilisk platform (Popinet 2015), both using a fully implicit method to ensure stability.

Apart from the added assurance of having reproduced the same results using two very different implementations, the main difference between the two schemes is that the Matlab code works with a prescribed hierarchy of grids, assuming a single rupture point. The Basilisk scheme, on the other hand, makes use of the automatic grid refinement capabilities of the platform, based directly on properties of the solution. Using local refinement, we are able to follow the evolution of the film thickness through four orders of magnitude, within a fully two-dimensional spatial description.

We detect quasi one-dimensional, pointlike, regular, and irregular behaviour, and find agreement with theoretical predictions for the phase plane. Moreover, we present detailed comparisons of the film profile between theory and simulation for all the cases considered.

In the next section, we present the generalised thin film equation, and develop the similarity theory for space dimensions larger than one, including transitions between regular and irregular behaviour. The latter is accomplished by computing bifurcation curves of the one-dimensional profiles, generalising the approach of Dallaston *et al.* (2018). In the third section, we present the numerical methods used, while the fourth section contains a detailed comparison between theory and simulation. We conclude with a discussion and perspectives for the future.

2. Self-similar solutions of the thin film equation

2.1. The generalised thin film equation

The most frequently used version of the thin film equation (Oron *et al.* 1997; Craster & Matar 2009; Blossey 2012) is that for a layer of viscous liquid on a solid substrate. It describes how viscous motion is driven by pressure gradients. In the lubrication approximation, in which the pressure $p(x, t)$ is taken to be constant over the layer, the equation for the film thickness $h(x, t)$ becomes

$$h_t = \frac{1}{3} (h^3 p_x)_x. \quad (2.1)$$

Here subscripts refer to differentiation with respect to the variable. For simplicity, we restrict ourselves to one dimension, and generalise to higher dimensions later. If the fluid is allowed to slip over the solid surface, as is the case for entangled polymer solutions (Münch *et al.* 2005; Blossey 2012), the mobility h^3 changes its power to h^2 . The mobility h is observed for the breakup of a thin neck inside a Hele-Shaw cell (Constantin *et al.* 1993).

If it were for surface tension alone, a flat film would be a state of minimum energy, and the film would relax back to it, even if perturbed (Benzaquen *et al.* 2014). However, the liquid-gas interface is often attracted by the substrate (Bonn *et al.* 2009), and rupture can occur. This is modelled by an additional disjoining pressure, and in the case of non-retarded van der Waals forces (Blossey 2012),

$$p = -\gamma h_{xx} - \frac{A}{6\pi h^3}, \quad (2.2)$$

where γ is the surface tension, and $A > 0$ the Hamaker constant. Other exponents for the van der Waals attraction are also possible, for example $p \propto h^{-4}$ for retarded van der Waals forces (de Gennes 1985; Blossey 2012).

Without aiming to model a particular system, but noting that exponents may differ according to experimental circumstances, we now allow the two exponents to vary freely. We also choose units of h , x , and t such that prefactors become unity, to arrive at the equations:

$$h_t - (h^n p_x)_x = 0, \quad p = -h_{xx} + \frac{h^{-m}}{m}, \quad (2.3)$$

which have been studied numerically for a long time (Williams & Davis 1982; Sharma *et al.* 1995). The classical case of non-retarded van der Waals forces, and a Newtonian liquid on a solid surface, corresponds to $n = m = 3$. Alternatively, this “generalised lubrication equation” (Eggers & Fontelos 2009; Dallaston *et al.* 2018) may be written in the compact form

$$h_t + (h^n h_{xxx} + h^{n-m-1} h_x)_x = 0. \quad (2.4)$$

In the case of a two-dimensional film, which is the main subject of this paper, the

lubrication equation $h_t + \nabla \cdot \mathbf{f} = 0$ now has the flux $\mathbf{f} = -h^n \nabla p$, and the pressure is $p = -\Delta h + h^{-m}/m$. Here ∇ is the gradient operator and $\Delta \equiv \nabla^2$. Once more we have chosen units to normalize coefficients to unity. Now the generalised lubrication equation (Bertozzi & Pugh 1994) becomes

$$h_t = -\nabla \cdot (h^n \nabla \Delta h + h^{n-m-1} \nabla h). \quad (2.5)$$

Assuming that $h(x, y, t)$ depends on a single spatial variable, one of course recovers (2.4).

To test the stability of a flat film of thickness h_{ref} , we consider small perturbations of size ϵ and linearise:

$$h(x, y, t) = h_{\text{ref}} + \epsilon e^{\omega t + i(k_x x + k_y y)}, \quad (2.6)$$

where ω is the growth rate of the perturbation. Inserting (2.6) into (2.5), we obtain the dispersion relation

$$\omega = h_{\text{ref}}^{n-m-1} k^2 (1 - h_{\text{ref}}^{m+1} k^2), \quad k^2 = k_x^2 + k_y^2. \quad (2.7)$$

One observes that wavenumbers $k < h_{\text{ref}}^{-(m+1)/2}$ are unstable, while the *highest* growth rate is achieved for $k = h_{\text{ref}}^{-(m+1)/2} / \sqrt{2}$. In our numerical simulations below, we will consider films sufficiently thin, so that the smallest wave number in the system is linearly unstable. After an initial exponential growth of perturbations, the problem becomes nonlinear and eventually leads to rupture, where the film thickness goes to zero.

2.2. One dimensional similarity solutions and their stability

We begin with the simplest case of a single spatial variable, corresponding to rupture of a one-dimensional ridge. We consider (2.4) and look for similarity solutions of the form

$$h(x, t) = t'^{\alpha} H(\xi), \quad \xi = \frac{x'}{t'^{\beta}}, \quad (2.8)$$

where $t' = t_0 - t$ and $x' = x - x_0$. Inserting this into (2.4), and balancing the powers of t' that arise from each of the three terms, we find a unique solution for the exponents in terms of the parameters n and m :

$$\alpha = \frac{1}{2 + 2m - n}, \quad \beta = \frac{1 + m}{4 + 4m - 2n}. \quad (2.9)$$

Using these values, we obtain an equation for the similarity profile $H(\xi)$:

$$-\alpha H + \beta \xi H_{\xi} = - [H^n H_{\xi \xi \xi} + H^{n-m-1} H_{\xi}]_{\xi}. \quad (2.10)$$

As observed for the case of $n = m = 3$ (Zhang & Lister 1999a), (2.10) has an infinite sequence of solutions, which we will denote by $H_i(\xi)$, $i = 0, 1, 2, \dots$. However, only one of them, the “ground state” solution $H_0(\xi)$, is observed in simulation. This raises the question of the stability of such solutions, which can be studied by rewriting (2.4) in self-similar form. This is achieved by the transformation (Giga & Kohn 1985)

$$h(x, t) = t'^{\alpha} H(\xi, \tau), \quad \xi = x'/t'^{\beta}, \quad \tau = -\ln t', \quad (2.11)$$

so that the similarity equation becomes

$$H_{\tau} = \alpha H - \beta \xi H_{\xi} - [H^n H_{\xi \xi \xi} + H^{n-m-1} H_{\xi}]_{\xi}. \quad (2.12)$$

The advantage of this “dynamical system” description (Eggers & Fontelos 2015) is that solutions of (2.10) are now fixed points of (2.12), making stability much easier to study. To investigate the neighborhood of a similarity solution, (2.12) has to be solved subject

to the far-field condition (Eggers & Fontelos 2015; Witelski & Bernoff 2000)

$$H_\tau \sim \alpha H - \beta \xi H_\xi, \quad |\xi| \rightarrow \infty, \quad (2.13)$$

which ensures matching to a slowly-evolving far-field solution.

To investigate the linear stability of solutions $H_i(\xi)$ of (2.10), we put $H(\xi, \tau) = H_i(\xi) + \delta e^{\nu\tau} P(\xi)$, and linearise (2.12) in δ . This results in the eigenvalue problem

$$\begin{aligned} \nu P = & \alpha P - \beta \xi P_\xi - [H_i^n P_{\xi\xi\xi} + nH_i^{n-1} H_{i,\xi\xi\xi} P \\ & + H_i^{n-m-1} P_\xi + (n-m-1)H_i^{n-m-2} H_{i,\xi} P]_\xi \end{aligned} \quad (2.14)$$

for eigenvalues $\nu = \nu_R + \nu_I i$, which is subject to the far-field condition

$$\nu P \sim \alpha P - \beta \xi P_\xi, \quad |\xi| \rightarrow \infty, \quad (2.15)$$

which follows from (2.13). If all eigenvalues have negative real parts, as it is typically found for the ground state $i = 0$ (Bernoff *et al.* 1998; Eggers 2012), the solution is stable. The higher order solutions $i > 0$ all have at least one eigenvalue with a positive real part, and are thus unstable. This excludes two positive eigenvalues of (2.14) (Giga & Kohn 1985; Eggers & Fontelos 2015), which are always present owing to the invariance of the equations under space and time translations, while (2.8) assumes a fixed reference point x_0, t_0 . A perturbation will produce a shift in the spatial and temporal position of the singularity, leading to the solution being driven away from (2.8). The corresponding positive eigenvalues are $\nu_T = 1$ and $\nu_X = \beta$, for the temporal and spatial shift, respectively. However these eigenvalues do not describe any physical instability, and can thus be discounted.

The stability of (2.10) was investigated by Witelski & Bernoff (2000) for the case $n = m = 3$, ignoring eigenvalues with imaginary part. We will see below that the most dangerous eigenvalues (those with the largest real part, apart from ν_T and ν_X), are in fact complex. Consistent with other systems, the ground state similarity solution was found to be stable, all other solutions unstable. This remains to be true if the missing complex solutions are accounted for (Dallaston *et al.* 2018). We begin by studying singular solutions of the one-dimensional equation (2.4) only.

2.3. Regular and irregular motion

In Dallaston *et al.* (2017), starting from the known solution for $n = m = 3$, new solutions were found by numerical continuation, holding the mobility exponent fixed at $n = 3$, but lowering m from its typical value $m = 3$, making the interaction more long-ranged. The stability of this branch of solutions was studied in Dallaston *et al.* (2018). Here we extend the analysis of Dallaston *et al.* (2017, 2018) to the whole interval $1 \leq n \leq 3$, as represented in the phase diagram shown in Fig. 1. We focus on the stability of the ground state solution $H_0(\xi)$, ignoring higher order branches H_i , $i \geq 1$, which are always unstable. In the upper part of the diagram, labelled regular, symmetric, one finds symmetric (stable) ground state solutions, an example of which is shown in Fig. 2(a), for $n = 3, m = 2$, and marked by a star in Fig. 1. These solutions are similar to those found originally for $n = m = 3$.

Of particular interest are the eigenvalues with the two largest real parts (both of which are complex), the larger one of which has a symmetric eigenfunction, the smaller (more negative) eigenvalue corresponding to an antisymmetric eigenfunction. As m is lowered from 3, the real parts increase, to produce Hopf bifurcations when $\nu_R = 0$ at finite $\nu_I \neq 0$; this signals the birth of a periodic orbit (Drazin 1992), while the original fixed point solution $H_0(\xi)$ has become unstable. This happens first for the

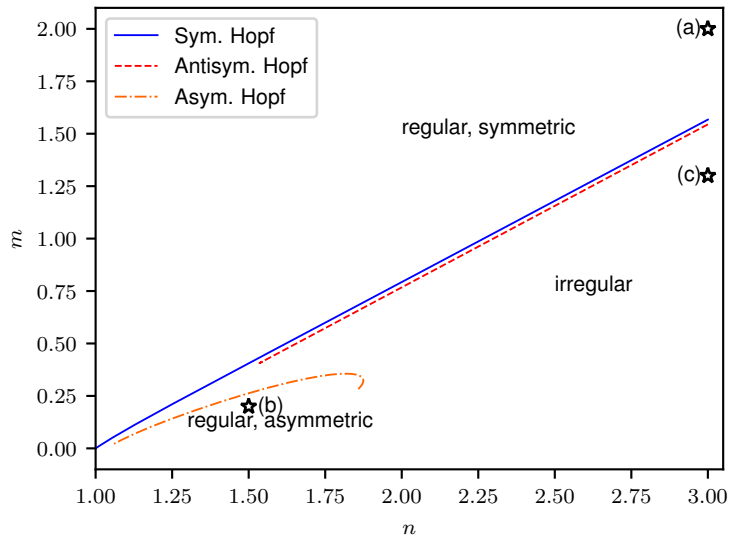


FIGURE 1. Phase diagram of one dimensional singular solutions of (2.4). Below the symmetric Hopf bifurcation (solid blue line), regular rupture solutions become unstable, and periodic, or even more complex dynamics appears. A second antisymmetric bifurcation occurs just below (red dashed line). For small values of n below ≈ 1.87 , regular, asymmetric solutions are seen below a Hopf bifurcation in the reverse direction (orange dot-dashed line). Examples, seen in Fig. 2, are marked by stars.

symmetric eigenfunction at a value m_s , and then for the antisymmetric eigenfunction, at m_a . We refer to the corresponding bifurcations as the symmetric and antisymmetric bifurcations, respectively, and the solution branches originating from those bifurcations as the symmetric and antisymmetric branches. Extending our numerical procedure to search for periodic solutions of (2.12) (see the Appendix A for details), we can continue the periodic solution branches from the Hopf bifurcation, where they are created. The symmetry of the periodic solutions along the symmetric and antisymmetric branches corresponds to the eigenfunctions which become unstable at the bifurcation. On the symmetric branch, the profiles are symmetric for all times: $H(\xi, \tau) = H(-\xi, \tau)$. On the antisymmetric branch, on the other hand, the second half of the period is the mirror image of the first half: $H(\xi, \tau) = H(-\xi, \tau + T/2)$.

The search for Hopf bifurcations of the ground state solution has been carried out for $1 \leq n \leq 3$, which results in bifurcation curves $m_s(n)$ and $m_a(n)$, which are drawn as the solid blue and dashed red lines in Fig. 1, respectively. Below the solid blue line, the symmetric fixed point solution has become unstable, and one should expect irregular behaviour: periodic, or perhaps even more complicated. As seen in Fig. 1, the symmetric Hopf bifurcation line is close to linear, and well described by the equation $m = 0.8(n - 1)$. As a good rule of thumb, we can therefore say that

$$m > 0.8(n - 1) : \quad \text{regular dynamics} \quad (2.16)$$

is the condition for a regular fixed-point solution; in the opposite case, irregular behaviour may be seen.

We have not yet fully described the bifurcation structure below the antisymmetric Hopf line, but arguments given in Appendix A.3 indicate that only the antisymmetric periodic

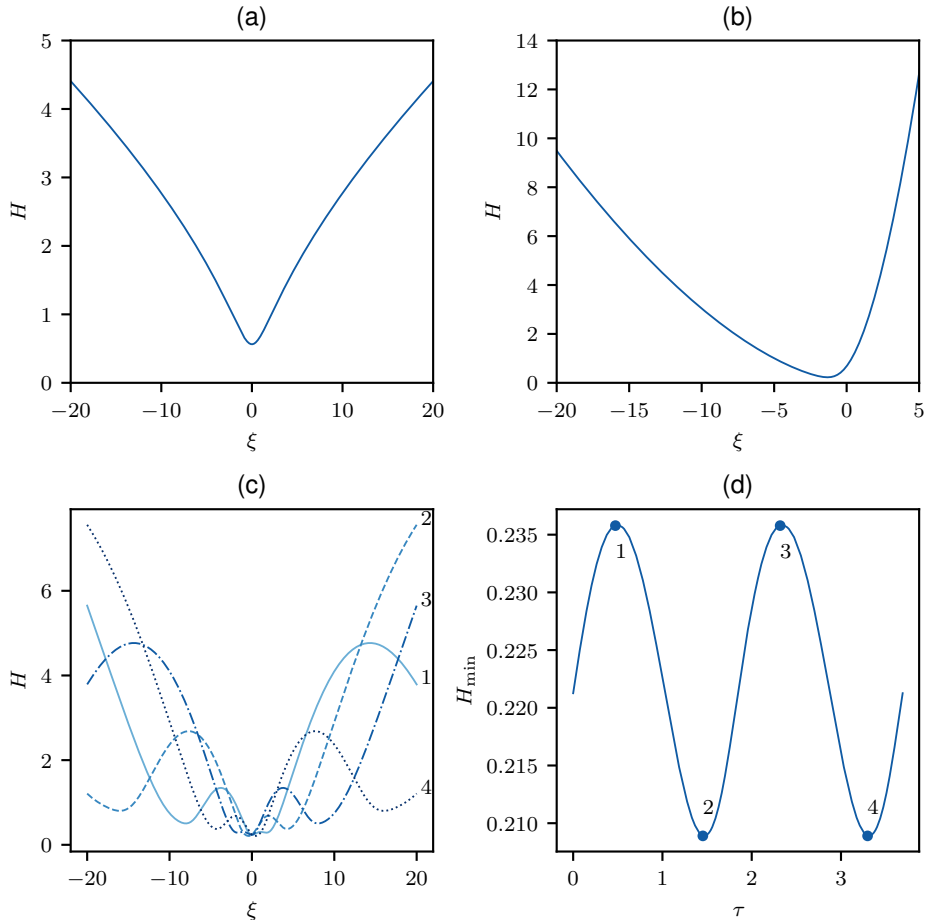


FIGURE 2. Three examples of similarity solutions (solutions to (2.12)), identified by stars in Fig. 1. (a): a regular, symmetric similarity solution for $n = 3, m = 2$. (b): a regular, asymmetric solution for $n = 1.5, m = 0.2$. (c): a periodic solution for $n = 3, m = 1.3$, from the antisymmetric branch. The periodic solution has a period of $T = 3.7$, and 4 profiles are shown, at the times indicated in (d), where we plot the minimum scaled thickness H_{\min} as a function of the scaled time τ ; notice that profile 1 is the mirror image of profile 3)

solution branch should be observed. This is confirmed by numerical simulations of the one-dimensional equation (2.3), whose periodic solutions always exhibit the symmetry of the antisymmetric branch.

In Fig. 2(c) and (d) we show a typical example of such a solution from the antisymmetric branch, which is found by continuing the periodic solution branch from the antisymmetric Hopf bifurcation, as explained in Appendix A. It corresponds to a solution $H(\xi, \tau)$ in similarity space, which is periodic in τ with period T , after which it returns to the same profile. In addition, the profiles obey the symmetry $H(\xi, \tau) = H(-\xi, \tau + T/2)$. Thus if profiles are recorded at discrete times $\tau_n = \tau_0 + nT$, where n is an integer, one observes a self-similar shrinking of the solution, hence the name “discrete self-similarity”. In Fig. 2(c), we show a sequence of four profiles at equal steps of τ , after one returns to the original profile.

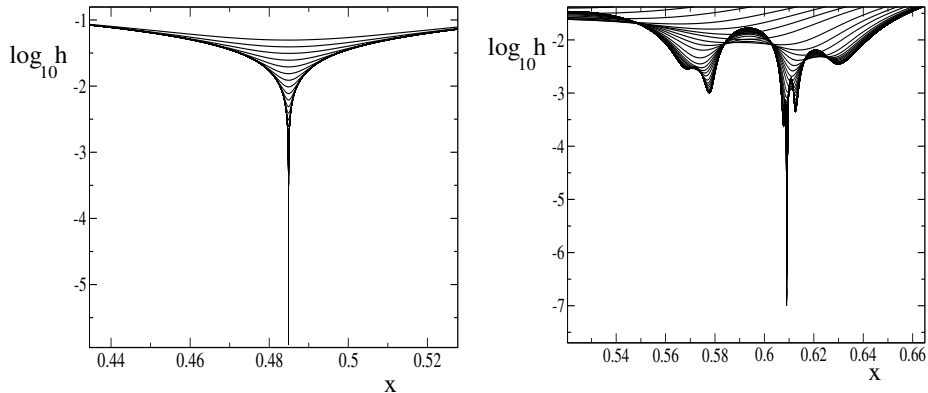


FIGURE 3. Simulations of (2.3) with $n = 3, m = 2$ (left, regular case), and $n = 3, m = 1.3$ (right, irregular case), plotting $\log_{10} h(x, t)$ as the singularity is approached. Only the neighborhood of the singularity is shown, and a new profile is recorded each time the minimum thickness h_{min} has decreased by a factor of 0.8.

The difference between a fixed point solution and a periodic solution is illustrated in Fig. 3, where direct numerical simulations of the one-dimensional thin film equation (2.4) are shown. On the left, we show the regular case: the same symmetric profile appears on smaller and smaller scales. On the right, we show the irregular case of a periodic orbit (discrete self-similarity), for the same parameter values than those shown in (c) and (d) of Fig. 2. The profile undergoes a sequence of changes, which repeat themselves after a period T in logarithmic time.

In Dallaston *et al.* (2018) it is shown with the example of $n = 3, m = 1$, that solutions can also become non-periodic. While in the discretely self-similar case the profile continually undergoes the same sequence of instabilities, in the non-periodic case new structures are always created. While the periodic case can be seen as creating a monofractal (similar to a Cantor set (Halsey *et al.* 1986)), where the same pattern appears on smaller and smaller scales, the non-periodic case corresponds to a multifractal, which consists of a superposition of sets with different scaling exponents. Apart from some specific examples, we have not yet delineated regions of more complicated behaviour in the phase diagram.

However, as seen in Fig. 1, not all solutions below the blue bifurcation line are irregular. For $n \lesssim 1.87$, below the orange dot-dashed bifurcation line, fixed point solutions become once more stable, but are now asymmetric, an example of which is shown in Fig. 2(b). As detailed in Appendix A, these solutions were found from a continuation procedure from the original symmetric ground state solution. Beyond the symmetric and antisymmetric Hopf bifurcations, a pitchfork bifurcation leads to a pair of unstable, asymmetric solutions with complex eigenvalue; the asymmetric pair is the mirror image of one another. Continuing this branch, the real part of the eigenvalue eventually goes through zero and becomes negative in another Hopf bifurcation, but going in the opposite direction, and producing a stable, asymmetric solution.

We have confirmed the structure of the one-dimensional phase diagram in Fig. 1 by performing numerical simulations of (2.3) with a spatial resolution of up to 14 orders of magnitude (two examples of which are shown in Fig. 3). We have also performed simulations of the rescaled equation (2.12), as explained in more detail in Appendix A. There remains some uncertainty as to the exact structure of the diagram in its lower half, below $m \approx 0.4$. There, the dynamics are characterized by very long transients,

which make the distinction between regular and irregular behaviour difficult. We could identify some return to fixed-point behaviour for sufficiently small m , even to the right of the orange bifurcation line. However, we must leave the exact delineation of these boundaries to a future publication.

2.4. Higher dimensional solutions

We now come to the main aim of this paper, which is to understand the structure of solutions in two and higher dimensions, using the general ansatz (1.1). We first analyze the case of $\bar{\beta} = \beta$, leading to pointlike solutions. Then we analyze the case $\bar{\beta} < \beta$, which results in quasi one-dimensional solutions.

2.4.1. Pointlike solutions

Inserting (1.1) with $\bar{\beta} = \beta$ into the generalised thin film equation (2.5), we obtain the similarity solution

$$-\alpha H + \beta \xi H_\xi + \beta \eta H_\eta = -\nabla \cdot (H^n \nabla \Delta H + H^{n-m-1} \nabla H), \quad (2.17)$$

where $\nabla = (\partial_\xi, \partial_\eta)$, and $\Delta = \partial_\xi^2 + \partial_\eta^2$. In view of spatial isotropy, it is natural to look for solutions of (2.17) which are axisymmetric (Zhang & Lister 1999b; Witelski & Bernoff 2000). The scaling of the exponents (2.9) is the same as in the one-dimensional case. This leads to the radially symmetric solution

$$h(x, y, t) = t'^\alpha H(\rho), \quad \rho = r/t'^\beta, \quad (2.18)$$

for which the similarity equation becomes in two dimensions:

$$-\alpha H + \beta \rho H_\rho + \frac{1}{\rho} \left[\rho H^n \left(\frac{(\rho H_\rho)_\rho}{\rho} \right) + H^{n-m-1} H_\rho \right] = 0. \quad (2.19)$$

Solutions to (2.19) have been computed for $n = m = 3$ (Zhang & Lister 1999b), and have been found to be stable to radial as well as non-axisymmetric perturbations (Witelski & Bernoff 2000). However, the stability analysis again excluded complex eigenvalues. We will see below that axisymmetric solutions are in fact stable only for a range of n, m values.

It is worth noting that pointwise similarity solutions are not necessarily axisymmetric. An example are optical caustics, which are described by the eikonal equation (Nye 1999). In that case, radially symmetric solutions would correspond to perfect focusing, and would be the least generic situation. Instead, the most stable solutions, which take the fewest number of adjustable parameters to find, are the elliptic and hyperbolic umbilic. They can be found by solving the analogue of (2.19) for the eikonal equation (Eggers 2020).

2.4.2. Quasi one-dimensional solutions

The other possible solution of the form (1.1) is the case $\bar{\beta} < \beta$, which means that the solution is varying slowly in the transversal direction; the direction in which the solution is most singular (largest derivatives), we choose as the x -direction. We have investigated solutions of this type previously in the case of the eikonal equation (Eggers *et al.* 2015), the dispersionless Kadomtsev-Petviashvili equation (Grava *et al.* 2016), and shock formation in the compressible Euler equation (Eggers *et al.* 2017). Here we point out the generality of the approach, which is independent of the particular structure of the equation, and apply it to the generalised thin film equation.

Owing to the slow variation in the y direction, we can look at the solution as a superposition of one-dimensional solutions (2.8). Since the eigenvalue ν_T is usually the most singular one, we consider a corresponding shift in the singularity time of the one-dimensional solution. As y is varied, the singular time $t_c(y)$ effectively varies (Pomeau *et al.* 2008; Grava *et al.* 2016). Setting the origin of the transversal variable such that the singularity occurs for $y = 0$ first, and expanding, we have

$$t_c = t_0 + ay^2 + O(y^3); \quad (2.20)$$

we must have $a > 0$ so that always $t_c \geq t_0$. For the same reason, there can be no linear term. Replacing t' in (2.8) by $t_c - t = t' + ay^2 + O(y^3)$ implies the scaling $y^2 \propto t'$, and thus $\bar{\beta} = 1/2$. Of course, $\bar{\beta} = 1/4$, corresponding to $t_c - t = t' + a'y^4 + O(y^5)$ is another possibility, but that would be a non-generic situation. The singularity proceeds in the x -direction, but is “unfolded” in the transversal (y) direction, a situation well understood in the case of the eikonal equation (Nye 1999; Eggers *et al.* 2015).

Thus we write for the similarity solution describing the unfolding

$$h(x, y, t) = t'^{\alpha} H \left(\frac{x'}{t'^{\beta}}, \frac{y'}{t'^{1/2}} \right) \equiv t'^{\alpha} H(\xi, \eta), \quad (2.21)$$

which is consistent if $\beta > 1/2$. In that case the $h_x = t'^{\alpha-\beta} H_{\xi} \gg h_y = t'^{\alpha-1/2} H_{\eta}$, so that the right hand side of (2.5) becomes to leading order $-t'^{\alpha-1} [H^n H_{\xi\xi\xi} + H^{n-m-1} H_{\xi}]_{\xi}$, and the similarity equation of the thin film problem is

$$-\alpha H + \beta \xi H_{\xi} + \frac{\eta}{2} H_{\eta} = - [H^n H_{\xi\xi\xi} + H^{n-m-1} H_{\xi}]_{\xi}. \quad (2.22)$$

Combining the condition $\beta > 1/2$ for a quasi-one-dimensional singularity with the formula (2.9) for β , one obtains

$$n > 1 + m, \quad \text{quasi-one-dimensional} \quad (2.23)$$

as a necessary condition for a quasi one-dimensional singularity. The same stability boundary is obtained by considering a small y -dependent perturbation to a one-dimensional solution (Witelski & Bernoff 2000), realising that after a shift in the y -direction, it is enough to consider quadratic perturbations to leading order. Indeed, for the case $n = m = 3$, for which pointlike solution should be observed according to (2.23), Witelski & Bernoff (2000) describe numerically a transition of line-like and ring-like solutions toward point rupture.

With the above insight, we use (2.22) directly to find the most general unfolding of a one-dimensional solution $H^{(1)}(\xi)$ of (2.10). We claim that

$$H(\xi, \eta) = (1 + A\eta^2)^{\alpha} H^{(1)} \left(\frac{\xi + B\eta^{2\beta}}{(1 + A\eta^2)^{\beta}} \right) \quad (2.24)$$

is a solution of (2.22) for arbitrary constants A, B ; these constants are adjustable parameters, which depend on initial conditions. Indeed, putting $\zeta = (\xi + B\eta^{2\beta}) / (1 + A\eta^2)^{\beta}$, the right hand side of (2.22) becomes

$$\text{RHS} = - (1 + A\eta^2)^{\alpha-1} [H^n H_{\zeta\zeta\zeta} + H^{n-m-1} H_{\zeta}]_{\zeta},$$

while we compute

$$-\alpha H + \beta \xi H_\xi = (1 + A\eta^2)^{\alpha-1} \left(-\alpha H^{(1)} + \beta \xi H_\xi^{(1)} + \frac{\eta}{2} H_\eta^{(1)} \right) + \\ (1 + A\eta^2)^{\alpha-1} \left[-\alpha A\eta^2 H^{(1)} + \beta A\eta^2 \zeta H_\zeta^{(1)} \right] - (1 + A\eta^2)^{\alpha-\beta} \beta B\eta^{2\beta} H_\zeta^{(1)} = \text{RHS} - \frac{\eta}{2} H_\eta,$$

using that $H^{(1)}$ is a solution of the one-dimensional problem (2.10).

We stress that the unfolding (2.24) will provide solutions for any isotropic problem (not just the thin film equation), as long as the condition $\beta > 1/2$ is satisfied. The generality of (2.24) can also be understood from noticing that since $H^{(1)}(\xi)$ does not contain any free parameters, the only way a dependence on y can come in is through $t_0(y)$ and $x_0(y)$. Then to leading order $t_c - t = t' + Ay^2 = t'(1 + A\eta^2)$, and if we replace t' in

$$h = t'^\alpha H^{(1)} \left(\frac{x'}{t'^\beta} \right)$$

by $t'(1 + A\eta^2)$, we obtain the terms in (2.24) involving A . Next, we allow $x_c(y)$ to depend on y , and expand in y :

$$x - x_c = x' - \sum_{i=1}^{\infty} b_i y^i,$$

so that

$$\frac{x - x_c}{t'^\beta} = \xi - \sum_{i=1}^{\infty} b_i \eta^i t'^{i/2-\beta}.$$

This only leads to a finite result if 2β is an integer, so that in fact the contribution $B\eta^{2\beta}$ in (2.24) is regular. All coefficients b_i with $i/2 - \beta < 0$ must vanish (otherwise they would blow up), and so the leading contribution involving B is that of (2.24).

The form of the solution (2.24) is a general feature, independent of the structure of the equation. In the case of additional symmetries, it might even have a more general form. For example, considering the cusp singularity (Nye 1999) of the eikonal equation, and using the equivalent of (2.24), one finds a solution with three independent parameters. Only after invoking an additional invariance of the eikonal equation, does one recover the required four parameters.

In the case of the dynamical system (2.12), important for describing the irregular behaviour discussed in Subsection 2.3, the equation extending (2.22) is

$$H_\tau = \alpha H - \beta \xi H_\xi - \frac{\eta}{2} H_\eta - \left[H^n \left(H_{\xi\xi} - \frac{1}{mH^m} \right) \right]_\xi; \quad (2.25)$$

now if $H^{(1)}(\xi, \tau)$ is a solution of (2.12),

$$H(\xi, \eta) = (1 + A\eta^2)^\alpha H^{(1)} \left(\frac{\xi + B\eta^{2\beta}}{(1 + A\eta^2)^\beta}, \frac{\tau}{1 + A\eta^2} \right) \quad (2.26)$$

solves (2.25). Note that depending on y , the solution is found in different phases of the evolution. In the case of a non-periodic solution, this will be even more complicated.

3. Numerics of the thin film equation

In the light of the above discussion, we want to explore numerical solutions of (2.5), to see whether one can identify the types of solutions described above, and find the transitions between them. Namely, transitions between quasi one-dimensional and pointlike

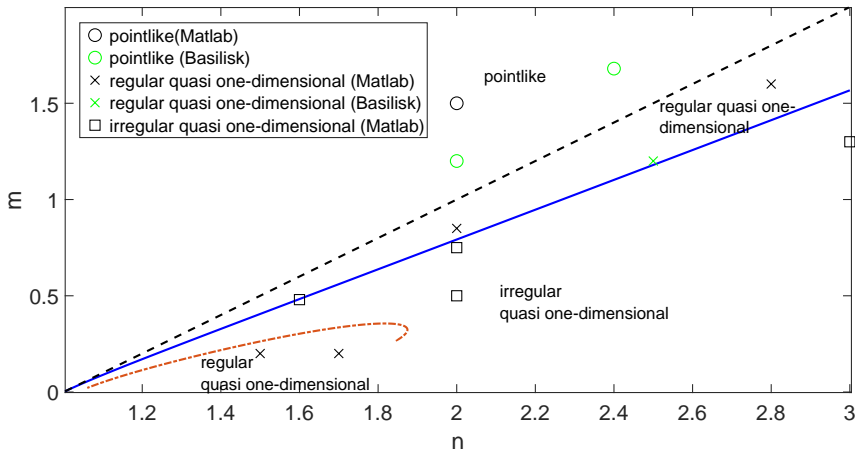


FIGURE 4. Phase plane of the two-dimensional singularities of (2.5). The blue solid line is the border (2.16) between regular and complex behaviour, the black dashed line is the border (2.23) between pointlike and quasi one-dimensional behaviour. For smaller values of m , and $n \lesssim 1.87$ (below the orange dot-dashed line), there is a return to regular behaviour. The symbols correspond to numerical simulations of (2.5) with initial condition (3.1).

solutions, and between regular and irregular solutions, as the exponents n, m are varied. For simplicity we impose periodic boundary conditions on $(x, y) \in [0, 1] \times [0, 1]$. As the initial condition we choose

$$h_0(x, y) = h_{\text{ref}} [1 - \epsilon_1 \cos 2\pi(x - 1/2)] [1 - \epsilon_2 \cos 2\pi(y - 1/2)], \quad (3.1)$$

which helps explore transitions between one and two dimensions. If $\epsilon_2 = 0$, there is no y -dependence, and solutions are strictly one-dimensional. If on the other hand $\epsilon_1 = \epsilon_2$, there is a single minimum at the center $(x, y) = (1/2, 1/2)$ of the domain, around which the profile is approximately axisymmetric. The mean thickness h_{ref} was chosen such that a flat profile is linearly unstable.

In view of the demands on the spatial resolution in two dimensions, two different numerical codes have been used in this work, using different schemes for the adaptive regridding. The first one, implemented in MATLAB ©, is based on the work of Herrada & Montanero (2016), while the second is constructed on the Basilisk platform (Popinet 2015).

3.1. Matlab

In this scheme, constructed with Matlab, we have taken advantage of the symmetry of the problem to simulate just a quarter of the domain: $[0, 0.5] \times [0, 0.5]$. The two-dimensional generalised thin film equation (2.5) leads to a nonlinear equation for h in terms of h_t and partial derivatives in the spatial variables:

$$h_t = h^n [h_{yyyy} + 2h_{xyyy} + h_{xxxx} + (h_{yy} + h_{xx})/h^{m+1} - (h_y^2 + h_x^2)(m+1)/h^{m+2} + h_y h^{n-1} n (h_{yyy} + h_{xxy} + h_y/h^{m+1}) + h_x h^{n-1} n (h_{yyx} + h_{xxx} + h_x/h^{m+1})]. \quad (3.2)$$

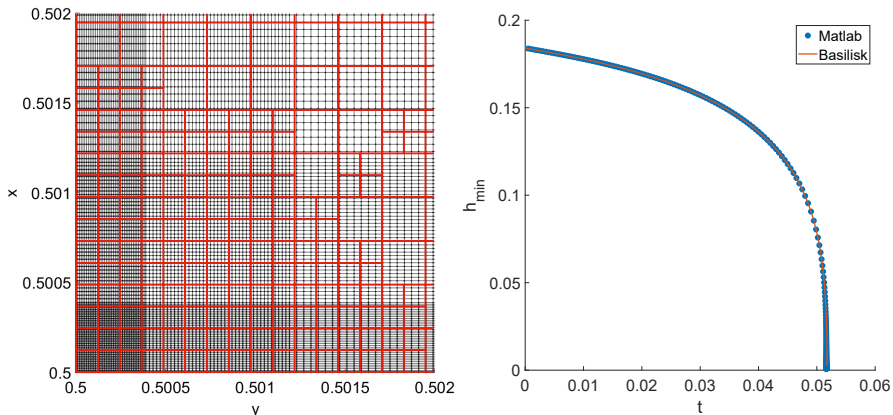


FIGURE 5. A comparison of the two numerical codes for the example of Fig. 6. On the left, thin black lines show the “fine” grid of the Matlab code, used for $h_{\min} \leq 0.09$; the thick red lines show one quadrant of the most refined grid of the Basilisk code, for $h_{\min} = 2.6 \cdot 10^{-3}$. The Matlab code reached $h_{\min} = 6 \cdot 10^{-4}$. On the right, $h_{\min}(t)$ for both codes.

The time derivative is discretised using second order backward differences while second order central differences were employed to discretise the spatial derivatives. The method is fully implicit; to solve the nonlinear system resulting from the discretisation, a Newton–Raphson technique was used, where the required Jacobian matrix is obtained by combining analytical functions and collocation matrices (see Herrada & Montanero (2016) for further details). This allows to take advantage of the sparsity of the resulting matrix, to reduce the computational time to invert it.

A variable time step δt , based on the change in the minimum of h , was used for the time integration. The minima h_{\min} and $h_{\min,1}$ at the current and previous time steps, respectively, as well as the last time step, δt_1 , are used to set

$$\delta t_{\text{try}} = (\alpha h_{\min} - h_{\min,1}) / (h_{\min} - h_{\min,1}) \delta t_1 - \delta t_1.$$

Here α is a parameter to control the variation of the time step. The step δt_{try} is used when the solution approaches the singularity, while a fixed time step δt_{fixed} is used at the beginning of the simulation. To that end, the time step was set as $\delta t = \min(\delta t_{\text{try}}, \delta t_{\text{fixed}})$. Most of the simulations were carried out with $\alpha = 0.9$ and $\delta t_{\text{fixed}} = 0.001$.

All simulations were started with a uniform grid with a grid size $\Delta x = \Delta y = 0.002$. At a time determined individually for each case, the solution was interpolated to a new grid, concentrated around (x_{\min}, y_{\min}) , where h reaches its minimum value. Near this point a uniform grid with spacing $\Delta x = \Delta y = \Delta_{\min}$ is used. Starting at this point and after each N grid points, the grid size was doubled in each direction. The simulations were carried out with $\Delta_{\min} = 5 \cdot 10^{-5}$ and $N = 40$; The black lines on the left of Fig. 5 show an example of this finer mesh, which was used for $h_{\min} \leq 0.09$.

3.2. Basilisk library

Here, the nonlinear system of equations is solved using a Newton-Raphson scheme, implemented using the multigrid solver of the free C-language library Basilisk (Popinet 2015). This allows us to make use of the sophisticated adaptive grid refinement schemes available for Basilisk, and to control the discretisation error directly. Basilisk provides

tools for the numerical solution of PDE's, discretised spatially with adaptive Cartesian meshes.

Putting $p = -h_{xx} - h_{yy}$, (2.5) reads in components:

$$h_t = (h^n p_x)_x + (h^n p_y)_y - (h^{n-m-1} h_x)_x - (h^{n-m-1} h_y)_y. \quad (3.3)$$

Starting from a trial solution (p^*, h^*) , we put $p = p^* + \delta p$ and $h = h^* + \delta h$, with (p, h) the converged solution, and $(\delta p, \delta h)$ a small correction. Expanding $h^n = (h^* + \delta h)^n \approx (h^*)^n + n(h^*)^{n-1}(h - h^*)$, we obtain a linear system equivalent to (3.3), up to terms quadratic in $\delta h, \delta p$:

$$\begin{aligned} p + h_{xx} + h_{yy} &= 0, \\ (\alpha p_x)_x + (\alpha p_y)_y + (\beta h_x)_x + (\beta h_y)_y + (\gamma_x h)_x + (\gamma_y h)_y &= h_t + (\gamma_x h^*)_x + (\gamma_y h^*)_y, \end{aligned} \quad (3.4)$$

with

$$\alpha = (h^*)^n, \quad \beta = -(h^*)^{n-m-1} \text{ and } \gamma_{x,y} = n(h^*)^{n-1} p_{x,y}^* - (n-m-1)(h^*)^{n-m-2} h_{x,y}^*.$$

The system (3.4) is solved for h, p up to convergence, using a multigrid method. Convergence is checked by monitoring δh *a posteriori*.

Spatial derivatives are discretised using second order differences, while the time derivative has been discretised using first or second order backward differences; no significant difference was found between both time discretisation methods. The time step has been set according to two different strategies; it is either set proportional to the minimum height, or by estimating the time truncation error, calculated by comparing the solution obtained with second and first order time derivatives. The equations are very stiff, and prone to numerical divergence if the time step is not small enough. Therefore, both strategies require some fine tuning of parameters, in order to approach the singularities as closely as possible. The spatial discretisation is adapted automatically by monitoring the inverse of the height field, $h_i = 1/h$. In the vicinity of the singularities grids as small as $\Delta x = \Delta y = 3 \cdot 10^{-5}$ are used while the grid size grows to $\Delta x = \Delta y = 7.8 \cdot 10^{-3}$ far away from the singularities.

The main advantage of the Basilisk code is its automatic adaptivity of the mesh which can handle several singularities simultaneously, which will be illustrated in Fig. 12 of the Discussion. As a drawback, the discrete set of linearized equations (3.4) is difficult to solve with Basilisk's iterative multigrid solver. The multigrid solver is extremely delicate to handle in this simulation and is prone to diverge if the trial solution is not close enough to the true solution (either because the time step is too large and/or the interpolation in the re-meshing is not accurate enough). This problem does not arise in the Matlab code, given that the linear system is solved exactly by the direct inversion of a sparse matrix. As a constraint, the Matlab code can only handle a single singularity, since the stretching of the grid cannot deal with multiple regions of refinement.

We compare the two codes in Fig. 5, which uses the same parameters as in Fig. 6, for which pointlike behavior is observed. On the right it is shown that the minimum thickness h_{min} as a function of time agrees closely between the two simulations. However, with the Basilisk code we are only able to integrate to $h_{min} = 2.6 \cdot 10^{-3}$, owing to the multigrid solver failing to converge. The adaptive grid that was generated at this point is shown as the thick red lines on the left of Fig. 5. Up to this point the two codes agree, as shown by plotting $h_{min}(t)$ on the right. With the Matlab code, we were able to integrate down to $h_{min} = 6 \cdot 10^{-4}$, where for $h_{min} \leq 0.09$ the finer, graded grid was used, shown as black lines on the left of Fig. 5.

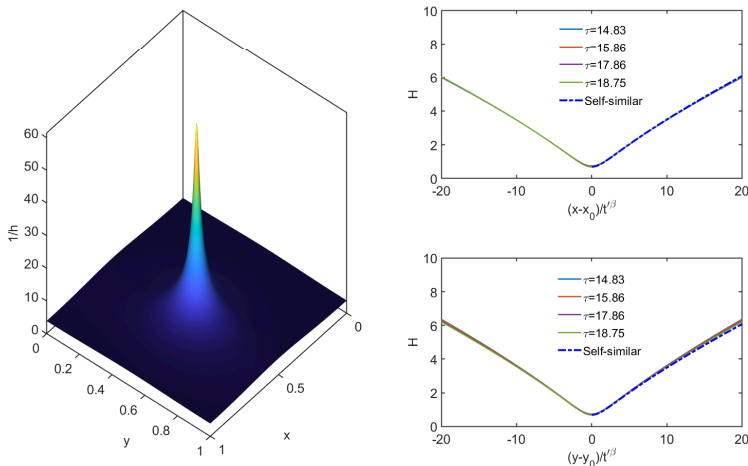


FIGURE 6. Simulation of (2.5) with $n = 2, m = 1.5$, ($\alpha \approx 0.33, \beta \approx 0.42$), and initial condition (3.1), using $\epsilon_1 = 0.05, \epsilon_2 = 0.03$, and $h_{\text{ref}} = 0.2$. On the left, a perspective plot of $1/h$ at $\tau = 10.1$ demonstrates the pointlike character. On the right, cuts in the x and y directions are shown at the top and bottom, respectively, for the values of $\tau = -\ln t'$ shown. Profiles are collapsed according to (2.18), and agree with a solution of (2.19) (dot-dashed line), demonstrating axisymmetry.

4. Comparison of theory and simulation

We are now able to compare our theoretical predictions of Fig. 4 to numerical simulations. Owing to the adaptive capabilities of both of our numerical codes, we are able to follow the dynamics through four orders of magnitude in spatial scale. This allows us to identify the self-similar structure, and classify the type of singularity according to our theoretical description. Both of our numerical codes provided consistent results.

The symbols in the phase plane of Fig. 4 correspond to simulations at set parameter pairs (n, m) , and are seen to agree nicely with theoretical predictions. The classification of the dynamics is based on the identification of the theoretically predicted structure. This is either the pointlike solution (2.18), or the quasi one-dimensional solution (2.24) in the regular, fixed-point case, or (2.26) in the irregular, time-dependent case. We will now go over a few representative cases, for which we present a detailed comparison.

The case of Fig. 6 is in the pointlike (axisymmetric) regime, shown as the black circle at $n = 2, m = 1.5$ in the phase diagram. According to (2.9), $\beta \approx 0.42 < 1/2$, so a transverse perturbation, resulting in an effective shift in t_0 , only produces a localized perturbation inside the peak, which remains stable. As seen on the left of Fig. 6, although the initial condition is not axisymmetric, the solution converges to a point, with radial symmetry. We show a perspective plot of $1/h$, and emphasize contour lines using a color scale. To demonstrate axisymmetry more clearly, we show collapse of the profiles in the x and y directions on the right. Cuts in both directions are rescaled according to (2.18). In both cases one observes very good collapse, and very good agreement with the solution to the axisymmetric similarity equation (2.19). We find the same pointlike behaviour for all of the cases above the blue dashed line.

Next we look at a quasi one-dimensional case, shown in Fig. 7. Choosing $n = 1.7, m = 0.2$ (black cross in the phase diagram), we begin with the simpler case of regular fixed point dynamics, found underneath the dot-dashed orange curve of Fig. 4, which

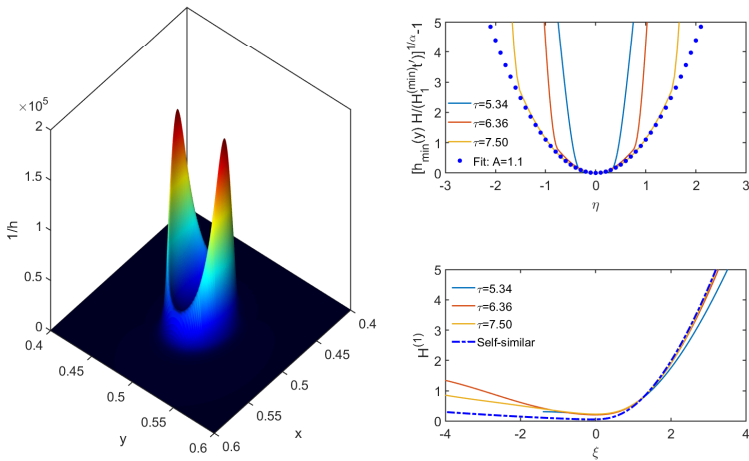


FIGURE 7. Simulation of (2.5) with $n = 1.7$, $m = 0.2$ ($\alpha \approx 1.42$, $\beta \approx 0.86$), and initial condition (3.1), using $\epsilon_1 = 0.05$, $\epsilon_2 = 0.03$, and $h_{\text{ref}} = 0.04$. A quasi one-dimensional, regular singularity is observed. On the left, a perspective plot of $1/h$ at $\tau = 7.5$ with two quasi one-dimensional peaks; on the bottom right, a collapse of the profiles using (1.1), compared to (2.24). Upper right, transversal collapse using (4.1).

marks the reverse Hopf bifurcation; the one-dimensional profiles are highly asymmetric, as shown in the lower right. On the left of Fig. 7, we once more plot $1/h$ over the (x, y) -plane, and indicate contours by color; owing to the symmetry of the initial condition, we now see two equal peaks. The exponent controlling the width of the singularity is $\beta \approx 0.87 > 1/2$, so a transversal perturbation now leads to a growth of one-dimensional singularities over a scale $t^{1/2}$, which is much larger than their width. Indeed, the peaks are seen to be extremely anisotropic: much thinner in the y -direction than they are in the x -direction.

Thus the definition of ξ and η in (1.1) must be read with the roles of x and y reversed. In general, one should apply (1.1) with the x -direction chosen as the direction of the largest gradient, y in the direction orthogonal to it. Looking at the front and back of the peak, one appreciates the asymmetry of the profile in the y -direction. In the x -direction, on the other hand, the solution is unfolded: the peak is highest along the centerline $x = 0.5$, and with increasing $|x - 0.5|$, one sees the singularity at earlier stages of its evolution.

On the right of Fig. 7, the structure of the singularity, as described by (2.24), is analysed more quantitatively. In the generic case of 2β not being an integer ($2\beta = 1.71$ in the example), we have $B = 0$, and it remains to calculate A . To that end, we calculate the minimum $H_{\text{min}}^{(1)}$ of the one-dimensional similarity profile by solving the one-dimensional similarity equation (2.10). Now we calculate the minimum of h for different values of y . From (2.24) it follows that

$$\left(\frac{h_{\text{min}}(y)}{H_1^{(\text{min})} t^{1/\alpha}} \right)^{1/\alpha} - 1 = A\eta^2, \quad (4.1)$$

and so A is found from plotting the left hand side as a function of η . On the upper right

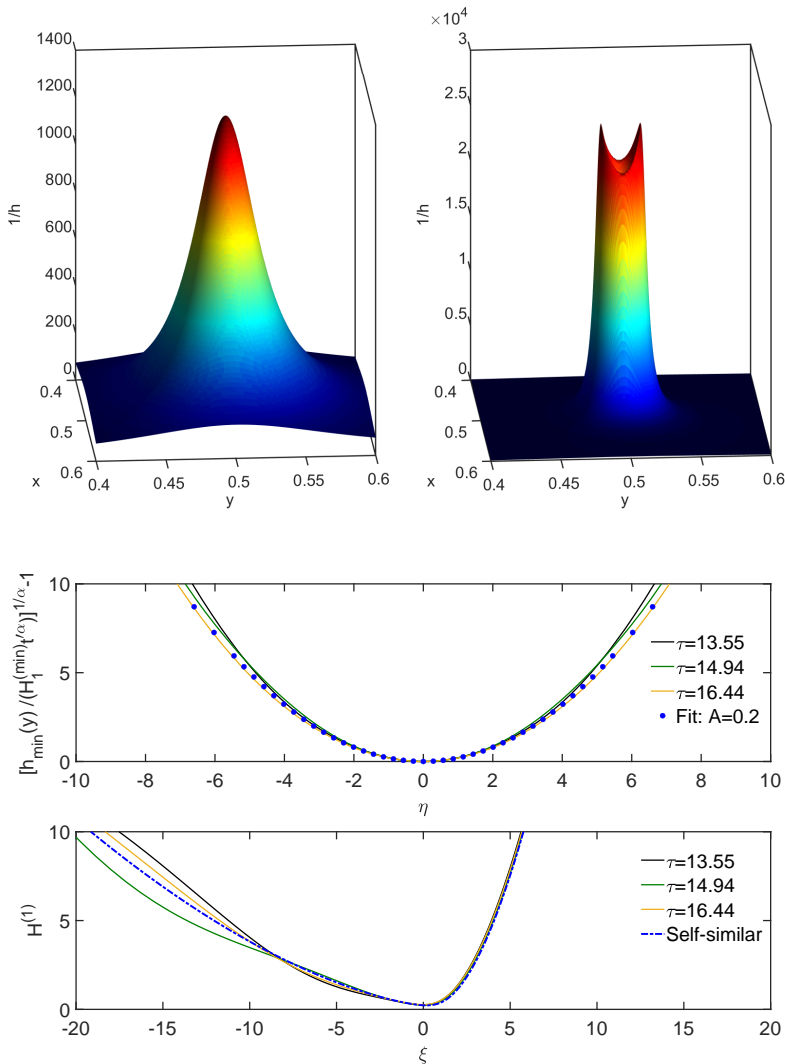


FIGURE 8. Simulation of (2.5) with $n = 1.5, m = 0.2$ ($\alpha \approx 1.11, \beta \approx 0.67$), and initial condition (3.1), using $\epsilon_1 = 0.05, \epsilon_2 = 0.03$, and $h_{\text{ref}} = 0.04$. A quasi one-dimensional, regular singularity is observed. On the top, a plot of $1/h$ at $\tau = 5.82$ (left) and $\tau = 8.04$ (right). In the middle, a transversal collapse using (4.1). At the bottom, a collapse of the profiles using (1.1), compared to (2.24).

of Fig. 7, one sees a collapse toward a quadratic profile as τ increases; from a fit to the quadratic profiles we find $A = 1.1$. Now we can test for the collapse of the whole profile using (2.24), as shown on the lower half on the right of Fig. 7. Once again, there is a good collapse and agreement with the self-similar solution, shown by the dot-dashed line.

To illustrate the crossover between pointlike and quasi one-dimensional behaviour, we show a second example of a regular, quasi one-dimensional singularity, but with β closer to $1/2$; for $n = 1.5, m = 0.2$ (black cross in the phase diagram), $\beta \approx 0.67$. At the top of Fig. 8, we show a perspective plot of $1/h$ at two different times. At an earlier time, the singularity looks pointlike (left), since transversal perturbations have not had time

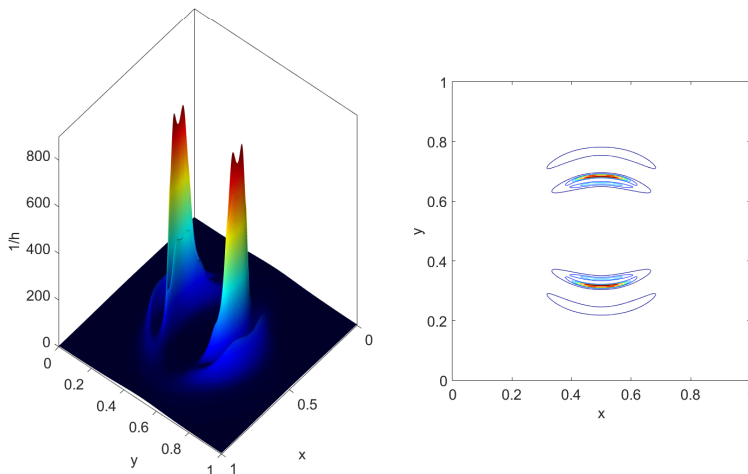


FIGURE 9. Simulation of (2.5) with $n = 3, m = 1.3$ ($\alpha \approx 0.63, \beta \approx 0.72$), and initial condition (3.1), using $\epsilon_1 = 0.05, \epsilon_2 = 0.03, h_{\text{ref}} = 0.1$. A quasi one-dimensional, irregular singularity results, with periodic orbits. On the left a perspective plot of $1/h$ for $\tau = 8.7$. Along the one-dimensional front, one observes a sequence of instabilities. On the right, a contour plot of one of the peaks of $1/h$ (taken at the same time) shows the irregularity of the profile.

to grow. However, when $h \sim 10^{-4}$, two singular peaks emerge (right). Their orientation is once more such that the singular direction is in the y -direction, so in the definition of ξ and η the role of x and y must be reversed. As seen in the middle of Fig. 8, making a cut through one of the peaks in the x -direction, the profiles converge to a parabola, in agreement with (4.1). At the bottom, a cut in the y -direction converges toward the expected one-dimensional profile, obtained from (2.10).

Finally, we study an irregular, complex case, for which the dynamics are always quasi one-dimensional, since the solid blue Hopf bifurcation line lies underneath the black dashed line, below which we observe quasi one-dimensional behaviour. An example of a simulation of (2.5) is shown in Fig. 9, where $n = 3$ and $m = 1.3$ (black square), so according to (2.16), we are in the irregular regime. On the left hand side, we show a perspective plot of $1/h$. While the peaks are smooth in the regular case, seen on the left of Fig. 7, they are now broken up into many smaller peaks, producing a spatially “spotty” behaviour. In the y -direction, one observes the result of multiple instabilities, as seen on the right of Fig. 3 for the one-dimensional case. In addition, as x is detuned from 0.5, this irregular behaviour is seen in different phases of its evolution, producing the hierarchy of peaks seen in Fig. 9. To emphasize the resulting complex spatial picture, on the right of Fig. 9 we also represent $1/h$ as a color contour plot in the plane.

In Fig. 10, we test the expected form (2.26) more quantitatively. The one-dimensional periodic orbit, calculated from (2.12), was shown in Fig. 2(c) and (d). In our two-dimensional simulation, h has been rescaled according to (1.1), in order to obtain the self-similar profile. On the left, we show the overall minimum of the profile, which should vary periodically, with period $T = 3.7$. The theoretical prediction is shown as the blue curve on the left of Fig. 10, which agrees very well with the numerical simulation for

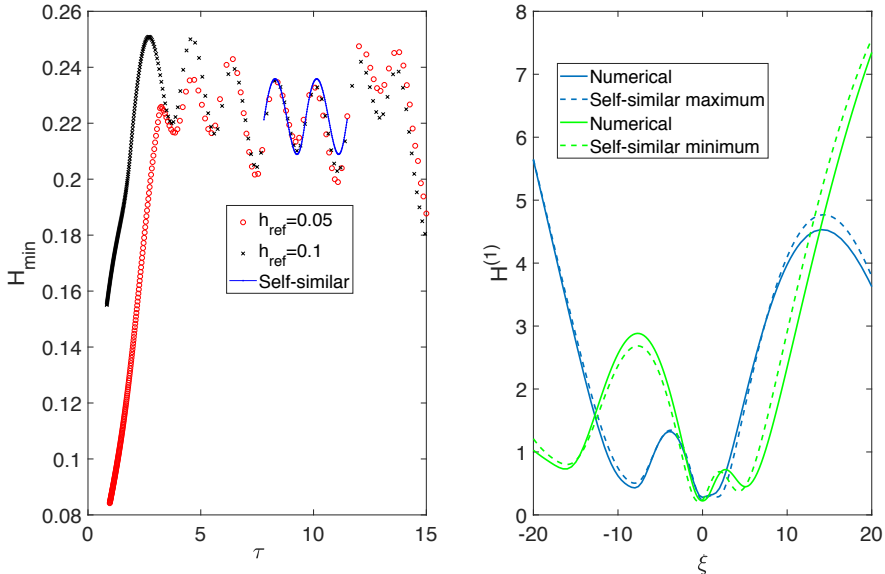


FIGURE 10. A quantitative test of (2.26), valid for the dynamical case. Parameters are the same as in Fig. 9, but two different values of h_{ref} are used. The one-dimensional, periodic profile is shown in Fig. 2(c). On the left, we plot the minimum of $t'^{-\alpha}h$, along the centerline $y = 0$ of the profile, compared with the theoretical prediction, with $T = 3.7$. On the right, the profile along the centerline is compared to the theoretical prediction. The profile taken at the minimum value of H_{min} corresponds to $\tau = 9.2$, the profile at the maximum value of H_{min} to $\tau = 9.9$.

two periods. We attribute the deviation between theory and numerics for $\tau > 12$ to an eventual loss of resolution of the numerical code.

To test the shape of the entire profile in its time evolution, we consider a cut through the profile at $x = 0.5$, rescaled according to (1.1). For simplicity, we record the shape of the profile when H_{min} is maximal and minimal, corresponding to the local maximum and minimum during the oscillation seen on the left of Fig. 10. The profile from a full numerical simulation of (2.5) thus obtained (solid lines), is compared to the theoretical profiles on the right; very good agreement is found.

5. Discussion

In this paper we have pointed out generic structures of singularities in more than one dimension. The flexibility of the generalised thin film equation is useful to test many different scenarios using just one equation, but the features of higher dimensional singularities we observed here carries over to many other equations as well. As examples of other systems we have mentioned the porous medium equation, the eikonal equation, and the compressible Euler system.

To clarify how our approach generalises to dimensions higher than two, let us consider three dimensions $\mathbf{x} = (x, y, z)$. As before, we take x as the direction in which the highest gradients occur, and y, z are the “transversal” directions. Now the detuning of the singularity time (2.20) has the form

$$t_c = t_0 + a_1 y^2 + a_2 z^2,$$

where a_1 and a_2 are positive constants, making sure that $t_c \geq t_0$. The similarity form of

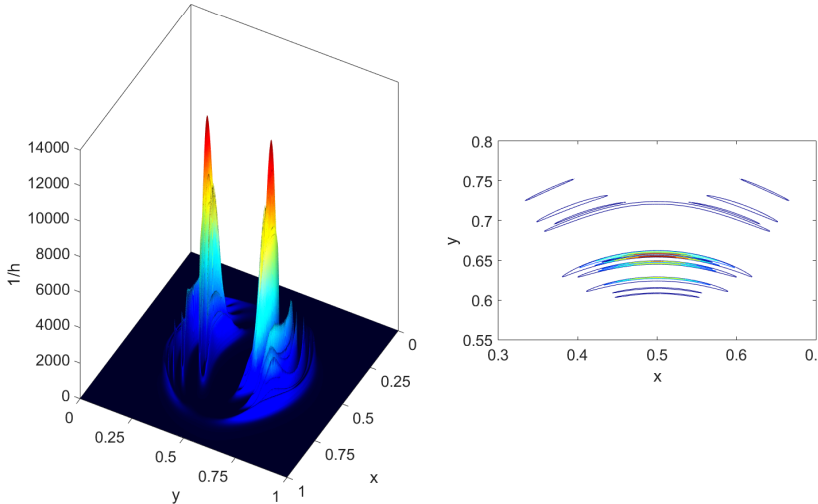


FIGURE 11. Simulation of (2.5) with $n = 3, m = 1$, and initial condition (3.1), using $\epsilon_1 = 0.05, \epsilon_2 = 0.03$, and $h_{\text{ref}} = 0.1$, in the non-periodic regime. On the left, a perspective plot of $1/h$ at $\tau = 8.36$; on the right, a contour plot.

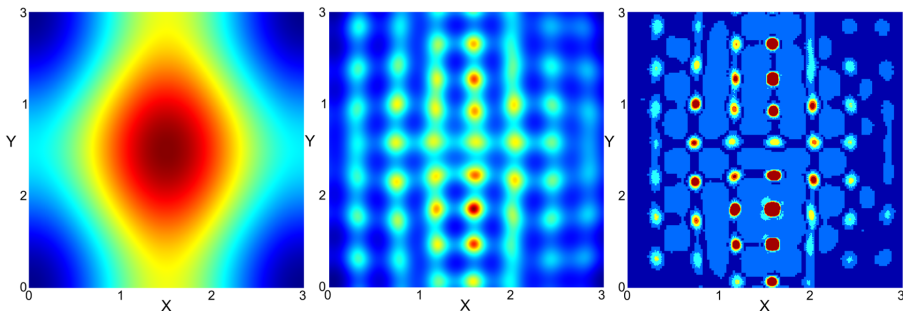


FIGURE 12. Simulation of (2.5) with $n = 3, m = 1$ in a large domain $[0, 3] \times [0, 3]$, using Basilisk. The code which produced the figure is available at <http://basilisk.fr/sandbox/lopez/layer.c>. On the left, the initial condition $h_0(x, y) = 0.05 [1 - 0.05 \cos 2\pi(x/3 - 1/2)] [1 - 0.03 \cos 2\pi(y/3 - 1/2)]$, as a color plot of $1/h$. In the middle, a color plot of $1/h$ for $h_{\text{min}} = 1.2 \cdot 10^{-2}$. Dark red corresponds to the smallest h , blue to the initial height. On the right, the grid generated by Basilisk, with blue corresponding to level 7 ($\Delta = 3/2^7 = 2.34 \times 10^{-2}$), and dark red to level 12 ($\Delta = 3/2^{12} = 7.32 \times 10^{-4}$). A movie of the full evolution is available as supplementary material.

quasi-one-dimensional solutions becomes

$$h(x, y, z, t) = t'^{\alpha} H \left(\frac{x'}{t'^{\beta}}, \frac{y'}{t'^{1/2}}, \frac{z'}{t'^{1/2}} \right), \quad (5.1)$$

where H satisfies

$$-\alpha H + \beta \xi H_{\xi} + \frac{\eta}{2} H_{\eta} + \frac{\zeta}{2} H_{\zeta} = \text{RHS}(\xi). \quad (5.2)$$

Here $\text{RHS}(\xi) = -[H^n H_{\xi\xi\xi} + H^{n-m-1} H_{\xi}]_{\xi}$ in the case of the thin film equation, but this may stand for any one-dimensional similarity problem. Finally, the unfolded solution of

(5.2) becomes

$$H(\xi, \eta, \zeta) = (1 + A_1\eta^2 + A_2\zeta^2)^\alpha H^{(1)} \left(\frac{\xi + B\eta^{2\beta}}{(1 + A_1\eta^2 + A_2\zeta^2)^\beta} \right), \quad (5.3)$$

which generalises (2.24).

When the interaction exponent m is large, interactions are very localized, and rupture occurs in a localized or “pointlike” fashion, as had been observed previously. More complicated dynamics occurs if the interaction becomes more long-ranged, as m becomes smaller. First, the higher dimensional dynamics becomes an unfolding of one-dimensional dynamics, making it a superposition showing the singularity in all its phases. Second, the underlying one-dimensional singularity may become irregular, producing new structures as smaller and smaller scales are reached.

The combination of both effects may contribute to the understanding of turbulent fields, which are characterized by complexity both in scale and in space. As an illustration, in Fig. 11 we show a snapshot of $1/h$ for a simulation of (2.5) with $n = 3, m = 1$ (black square in the phase diagram of Fig. 4), similar to that shown in Fig. 9. In that case, the one-dimensional dynamics is no longer merely periodic, but new structures keep being generated as one evolves toward smaller scales. Owing to the mechanism of unfolding, these new structures are translated into space, producing a spatially complex picture. As a result, one obtains a much more fractured picture than in the periodic case. This is clear especially on the right of Fig. 11, where a contour plot of $1/h$ reveals a spatially complex pattern.

The non-periodic nature of the singularity also implies a sensitive dependence on initial conditions, as illustrated in Fig. 12. We show a larger spatial region, which encompasses more than 6 wavelengths $\lambda_R = 0.44$ (see (2.7)) of the most unstable or Rayleigh mode of the initial film. As seen on the left of Fig. 12, the film is perturbed slightly on the scale of the entire domain, producing a non-uniform picture of decay; the initial condition is seen to have a fourfold symmetry. We use the Basilisk version of our code, owing to its capabilities of automatic refinement.

Since the evolution depends sensitively on the initial condition, slight changes in the initial condition translate into non-periodic behaviour on the small scale. In the final image, the local singularity is seen in many different stages of its evolution, producing a very non-uniform picture (Fig. 12, middle, where $h_{min} = 1.2 \cdot 10^{-2}$). Owing to small differences in how the refined grid is generated (see the image of the grid on the right), the fourfold symmetry of the initial condition is broken, and each local singularity looks different. We confirmed that a different choice of parameters for grid refinement leads to a qualitatively similar result, but with a different pattern of broken symmetry. We conjecture that the square pattern of rupture points is a result of the square grid used by Basilisk. We have also performed simulations in a large domain for the parameters of Fig. 7, for which the dynamics are regular. No symmetry breaking was observed, as expected.

Although our simulation of the large domain in Fig. 12 does not have sufficient resolution, each local rupture point will have the intricately folded structure seen at a higher resolution in Fig. 11. Thus non-periodic singular behaviour leads to a very intricate superposition of structure in space, but also in scale: upon a change of magnification, new patterns are seen.

Acknowledgments

M.A.H. and J.M. L.-H. acknowledge financial support from the Ministerio de Economía y Competitividad and the Junta de Andalucía of the Kingdom of Spain under grants PID2019-108278-RB-C31 and P18-FR-3623, respectively.

Declaration of interests

The authors report no conflict of interest.

Supporting data

Supporting data for this paper can be accessed at <https://zenodo.org/record/4506450#.YB0d5ejVuM9>

Appendix A. Similarity solutions and their stability

Here we apply the methods developed in Dallaston *et al.* (2017, 2018) to a range of n -values. Going beyond the original papers, we use a new method to compute periodic solutions directly, and find a novel branch of asymmetric solutions. The computations are performed in the numerical continuation software AUTO07-P.

We implement our search for solutions using two different approaches: In the first method, used in Dallaston *et al.* (2018, 2017), we solve the linearized problem. We code explicitly the fourth order ODE (2.10) for the similarity profiles, as well as the ODE for the eigenfunctions, as a system of first order ODEs. This method is highly accurate and efficient, as AUTO's accurate collocation method is used to compute the derivatives in ξ .

In the second method, we solve the nonlinear dynamical equation (2.12) in scaled form. It is discretised in ξ using finite differences, and coded into AUTO. This method is advantageous in that we now compute stability in a natural way from the Jacobian of the system, and can explicitly compute branches of periodic (i.e. discrete self-similar) solutions. However, it is not as efficient, as AUTO is not designed to exploit the sparse/banded Jacobian structure that arises in discretised PDEs, and we have not been able to explore the complete structure of periodic solution branches.

A.1. Computation of solution branches by numerical continuation

In order to find and to continue off the pitchfork bifurcation discussed in Subsect. 2.3, a symmetry breaking term must be introduced into the equation for the similarity profile (2.10). Rearranging (2.10) for the fourth derivative, we obtain

$$H^{(iv)} = H^{-n}(\alpha H - \beta \xi H') - nH^{-1}H'H''' - H^{-m-1}H'' - (n-m-1)H^{-m-2}H'^2 + \delta \xi e^{-\xi^2}, \quad (\text{A } 1)$$

where δ is the strength of the added symmetry breaking term. Note that this term will not affect the boundary conditions, and if we reduce δ to zero, we obtain a solution to the original equation (2.10).

To find the first two branches H_0 and H_1 of symmetric solutions, we put $\delta = 0$, and use the first method, starting from the known van der Waals solution at $n = 3, m = 3$ (Zhang & Lister 1999*a*; Witelski & Bernoff 1999). While a number of methods of computing the profile for these parameter values have been developed (Zhang & Lister 1999*a*; Witelski & Bernoff 1999; Tseluiko *et al.* 2013), we obtain it by computing a solution to the scaled time-dependent problem (2.12) until it reaches steady state, using the method described

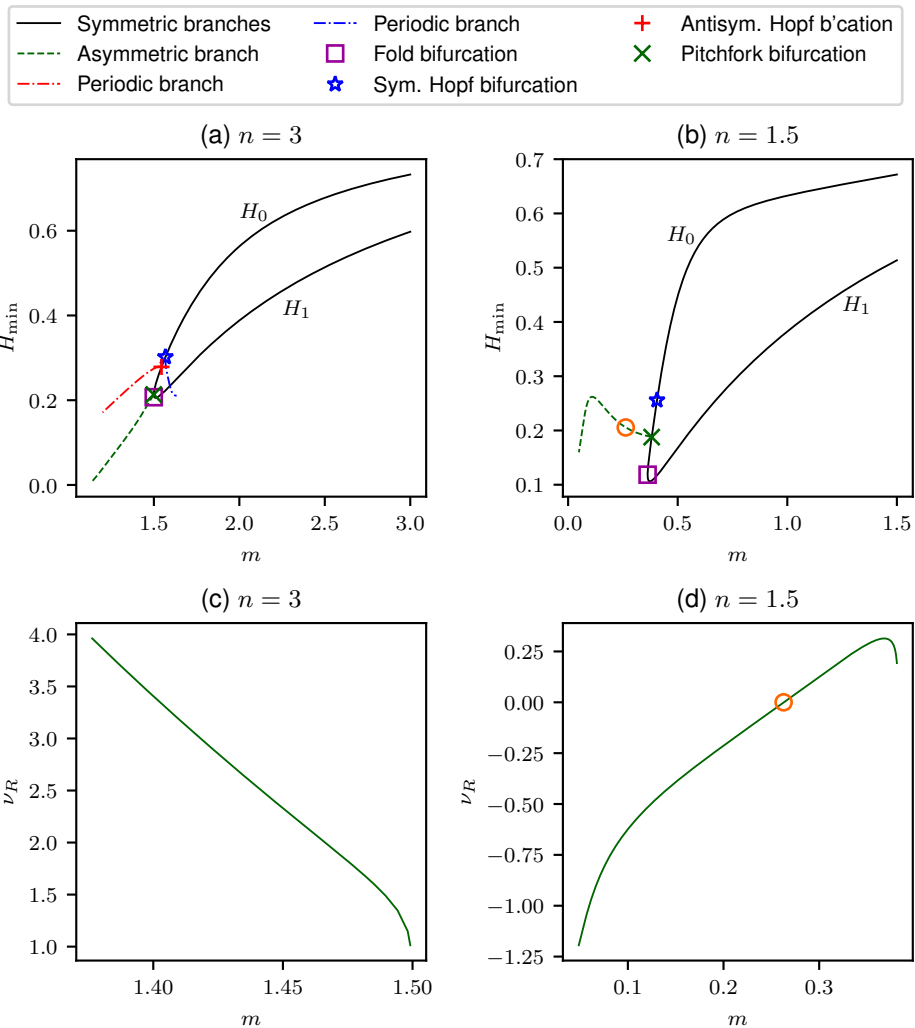


FIGURE 13. Solution branches for $n = 3$ (a) and 1.5 (c), represented by the minimum value H_{\min} of the similarity profile, as function of m . Branches H_0 and H_1 are joined at a fold bifurcation. Periodic branches are born at the symmetric and antisymmetric Hopf bifurcations, an unstable asymmetric branch originates from a pitchfork bifurcation. In the lower panes (c,d), the real part of the largest nontrivial eigenvalue ν_R is shown along the asymmetric branch, as function of m . For $n = 1.5$, a Hopf bifurcation is observed on the asymmetric branch (red circle), leading to stable, asymmetric similarity solutions for values of m less than this point.

in Dallaston *et al.* (2018). This branch (shown in black in Fig. 13(a,b)) is continued by varying m , until it reaches a turning point which represents the annihilation of this branch of solutions with another symmetric branch at a fold bifurcation (Dallaston *et al.* 2018, 2017), marked by a square. These branches are then continued to all $1 \leq n \leq 3$. The cases $n = 3$ and $n = 1.5$ are shown in Fig. 13(a) and (b), respectively. By varying m , the fold bifurcation traces out a line in the (m, n) plane, shown as the purple dash-dotted line in Fig. 14.

In order to find asymmetric solutions, the symmetry breaking term is turned on

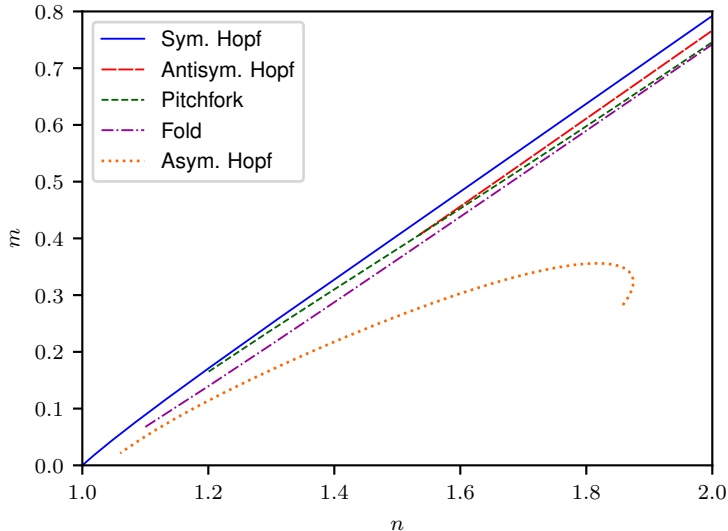


FIGURE 14. Location of all bifurcations detected in the (n, m) plane. At $n \approx 1.54$, the antisymmetric Hopf bifurcation and the pitchfork bifurcation collide.

by increasing δ to a positive value. When m is decreased, the H_0 solution branch passes through a pitchfork bifurcation (green crosses), at which an asymmetric branch originates, which consists of pairs of solutions, one a mirror image of the other. Once on the asymmetric branch, δ can be taken to zero again, and the solution branch is traced out by varying m , shown as the green dashed line in Fig. 13(a,b)). This can once more be continued to all $1 \leq n \leq 3$, exhibiting the same structure; the pitchfork bifurcation is shown as the green dashed line in Fig. 14.

A.2. Stability and Hopf Bifurcations

Using the first method, the stability of similarity solutions is determined by solving the coupled system of equations for the eigenfunctions, as well as for the similarity profiles. The real and imaginary parts of the eigenvalue are used as continuation parameters. This approach was performed in Dallaston *et al.* (2018), where the Hopf bifurcations that lead to discrete self-similarity were computed. For sufficiently large n there are two Hopf bifurcations on the ground state H_0 , as seen in Fig. 13(a,b)): as m is decreased, the ground state solution is stable until the largest eigenvalue becomes positive at the ‘symmetric’ Hopf bifurcation (blue star), with eigenfunction satisfying $P(-\xi) = \overline{P(\xi)}$. As m is decreased further there is an ‘antisymmetric’ Hopf bifurcation (red plus) with eigenfunction satisfying $P(-\xi) = -\overline{P(\xi)}$. The symmetric and antisymmetric Hopf bifurcation lines are shown in the (n, m) plane in Fig. 14 in blue and red, respectively. The fold bifurcation, at which H_0 and H_1 annihilate, is marked by a square in Fig. 13(c,d).

As n decreases, the antisymmetric Hopf bifurcation collides with the pitchfork bifurcation at a critical value $n \approx 1.54$, see Fig. 14. As this value is approached, the imaginary part of the eigenvalue at the Hopf bifurcation goes to zero (see Fig. 15(a)); that is, the period goes to infinity. This behaviour indicates a codimension-2 Bogdanov–Takens bifurcation (Kuznetsov 2013). This type of bifurcation has recently also been observed in fourth order PDEs (Tseluiko *et al.* 2020), although for steady states and not similarity solutions as is the case in this study.

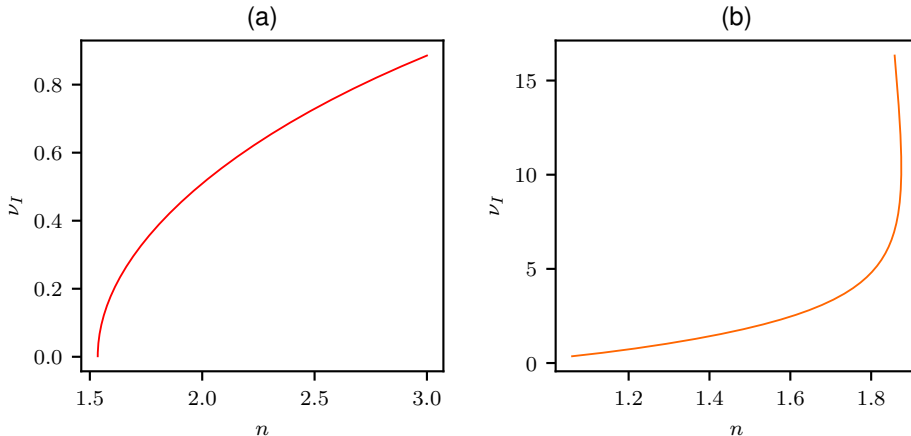


FIGURE 15. (a). The imaginary part of the eigenvalue at the antisymmetric Hopf bifurcation. At a critical value $n \approx 1.54$, this Hopf bifurcation collides with the pitchfork bifurcation (depicted in Figure 14), and the eigenvalue goes to zero, indicating a Bogdanov–Takens bifurcation. (b) The imaginary part of the eigenvalue at the Hopf bifurcation on the asymmetric branch. As the eigenvalue becomes large, computation in this region becomes difficult and the precise bifurcation structure in this regime is unclear.

The pitchfork bifurcation, where the asymmetric branch originates (found using the symmetry breaking term), is marked by a cross. We also compute the complex eigenvalues of the asymmetric branch, the largest real part ν_R of which is shown on the right of Fig. 13 for $n = 3$ (c) and $n = 1.5$ (d). For $n = 3$, ν_R always remains positive, making the corresponding asymmetric branch unstable. For $n = 1.5$, on the other hand, ν_R passes through zero at $m \approx 0.26$ (orange circle), where another Hopf bifurcation occurs, which restabilises the asymmetric branch as m decreases. By numerical continuation we trace out the location of this new Hopf bifurcation in the (n, m) plane, thus finding a region in which stable asymmetric similarity solutions exist (orange dotted line in Fig. 14).

This curve has a turning point at $n \lesssim 1.87$, which indicates the origin of these bifurcations is a double-Hopf bifurcation (Kuznetsov 2013). As m decreases beyond this turning point, the imaginary part of the eigenvalue grows large, as seen in Fig. 15(b). It is not clear if there is another bifurcation at this point, or if the limits of the numerical scheme prevent the curve from being computed further.

A.3. Computation of periodic orbits

Periodic branches may be computed by using the second method, that is, explicitly coding the finite-difference discretised version of the PDE. In this case we restrict ourselves to $n = 3$ and focus on the branch of solutions leading off the symmetric and antisymmetric Hopf bifurcations, as plotted in Fig. 13(a). Using 1241 points and a domain size of $L = 20$, the two Hopf bifurcations on the ground state solution branch are found to good accuracy.

Continuing off the symmetric Hopf bifurcation (blue dot-dashed curve in Fig. 13(a)), periodic orbits remain symmetric for all scaled time τ ; $H(\xi, \tau) = H(-\xi, \tau)$. The value of m increases from the bifurcation, into the region in which the steady symmetric solution is stable; this suggests the symmetric Hopf bifurcation is subcritical, and the symmetric

periodic orbits are unstable, and indeed we have not observed any stable symmetric periodic orbits in full numerical simulations.

Continuing off the antisymmetric Hopf bifurcation (red dot-dashed curve in Fig. 13(a)), periodic orbits have the value of m decreases from the bifurcation, past the point at which the steady solutions annihilate via the fold bifurcation. On this branch, similarity solutions have the mirror image property $H(\xi, \tau) = H(-\xi, \tau + T/2)$ as depicted for $n = 3, m = 1.3$ in Fig. 2(c). In principle the antisymmetric periodic branch should also be unstable close to the bifurcation, as the steady solution from which the branch bifurcates has already been destabilized by the symmetric Hopf bifurcation. However, full numerical simulations as depicted in Fig. 10 indicate that the branch is an attractor sufficiently far from the bifurcation. The exact nature of the dynamics and exchange of stabilities in the region near the bifurcation pair requires further careful study beyond the scope of this article.

More generally, the solution profiles become more extreme in their asymmetry as n becomes small, and the numerical computation becomes less reliable, due to the errors both in discretisation and truncation (that is, applying the far field boundary conditions at a finite distance from the origin). We use the numerical computation of the trivial eigenvalues ν_T, ν_X as a check on the accuracy of the numerics, which becomes increasingly sensitive for the highly asymmetric solutions. All solution branches here are terminated when ν_T is more than 0.01 different from the expected value of unity. There is clear scope, beyond this study, for carefully developing numerical tools that can be extended reliably to the more extreme regions of (n, m) parameter space, to build a complete picture of the bifurcation structure of similarity solutions to the equation (2.3).

REFERENCES

- ANGENENT, S. B., ARONSON, D. G., BETELU, S.I. & LOWENGRUB, J. S. 2001 Focusing of an elongated hole in porous medium flow. *Physica D* **151**, 228.
- ARNOLD, V. I. 1984 *Catastrophe Theory*. Springer.
- ARONSON, D. G. 2016 The focusing problem for the porous medium equation: Experiment, simulation and analysis. *Nonlin. Anal.* **137**, 135.
- BECKER, J. & GRÜN, G. 2005 The thin-film equation: recent advances and some new perspectives. *J. Phys.: Condens. Matter* **17**, S291–S307.
- BECKER, J., GRÜN, G., SEEMANN, R., MANTZ, H., JACOBS, K., MECKE, K. R. & BLOSSEY, R. 2003 Complex dewetting scenarios captured by thin-film models. *Nature Mat.* **2**, 59.
- BENZAQUEN, M., FOWLER, P., JUBIN, L., SALEZ, T., DALNOKI-VERESS, K. & RAPHAEL, E. 2014 Approach to universal self-similar attractor for the levelling of thin liquid films. *Soft Matter* **10**, 8608–8614.
- BERNOFF, A. J., BERTOZZI, A. L. & WITELSKI, T. P. 1998 Axisymmetric surface diffusion: Dynamics and stability of self-similar pinch-off. *J. Stat. Phys.* **93**, 725–776.
- BERTOZZI, A. L. & PUGH, M. C. 1994 The lubrication approximation for thin viscous films: the moving contact line with a 'porous media' cut off of van der Waals interactions. *Nonlinearity* **7**, 1535.
- BLOSSEY, R. 2012 *Thin liquid films*. Springer.
- BONN, D., EGGERS, J., INDEKEU, J., MEUNIER, J. & ROLLEY, E. 2009 Wetting and spreading. *Rev. Mod. Phys.* **81**, 739–805.
- CHEN, Y.-J. & STEEN, P. H. 1997 Dynamics of inviscid capillary breakup: collapse and pinchoff of a film bridge. *J. Fluid Mech.* **341**, 245–267.
- CHOPTUIK, M. W. 1993 Universality and scaling in gravitational collapse of a massless scalar field. *Phys. Rev. Lett.* **70**, 9.
- COHEN, I., BRENNER, M. P., EGGERS, J. & NAGEL, S. R. 1999 Two fluid drop snap-off problem: experiment and theory. *Phys. Rev. Lett.* **83**, 1147–1150.
- CONSTANTIN, P., DUPONT, T. F., GOLDSTEIN, R. E., KADANOFF, L. P., SHELLEY, M. J. &

- ZHOU, S.-M. 1993 Droplet breakup in a model of the Hele-Shaw cell. *Phys. Rev. E* **47**, 4169.
- CRASTER, R. V. & MATAR, O. K. 2009 Dynamics and stability of thin liquid films. *Rev. Mod. Phys.* **81**, 1131–1198.
- DALLASTON, M.C, TSELUIKO, D. & KALLIADASIS, S. 2016 Dynamics of a thin film flowing down a heated wall with finite thermal diffusivity. *Phys. Rev. Fluids* **1**, 073903.
- DALLASTON, M. C., FONTELOS, M. A., TSELUIKO, D. & KALLIADASIS, S. 2018 Discrete self-similarity in interfacial hydrodynamics and the formation of iterated structures. *Phys. Rev. Lett.* **120**, 034505.
- DALLASTON, M. C., TSELUIKO, D., ZHENG, Z., FONTELOS, M. A. & KALLIADASIS, S. 2017 Self-similar finite-time singularity formation in degenerate parabolic equations arising in thin-film flows. *Nonlinearity* **30**, 2647.
- DAY, R. F., HINCH, E. J. & LISTER, J. R. 1998 Self-similar capillary pinchoff of an inviscid fluid. *Phys. Rev. Lett.* **80**, 704–707.
- DE GENNES, P.-G. 1985 Wetting: statics and dynamics. *Rev. Mod. Phys.* **57**, 827–863.
- DRAZIN, P. G. 1992 *Nonlinear systems*. Cambridge University Press, Cambridge.
- EGGERS, J. 1993 Universal pinching of 3D axisymmetric free-surface flow. *Phys. Rev. Lett.* **71**, 3458–3460.
- EGGERS, J. 2012 Stability of a viscous pinching thread. *Phys. Fluids* **24**, 072103.
- EGGERS, J. 2018 The role of singularities in hydrodynamics. *Phys. Rev. Fluids* **3**, 110503.
- EGGERS, J. 2020 Self-similar structure of optical caustics.
- EGGERS, J. & FONTELOS, M. A. 2009 The role of self-similarity in singularities of partial differential equations. *Nonlinearity* **22**, R1–R44.
- EGGERS, J. & FONTELOS, M. A. 2015 *Singularities: Formation, Structure, and Propagation*. Cambridge University Press, Cambridge.
- EGGERS, J., GRAVA, T., HERRADA, M. A. & PITTON, G. 2017 Spatial structure of shock formation. *J. Fluid Mech.* **820**, 208–231.
- EGGERS, J., HERRADA, M. A. & SNOELJER, J. H. 2020 Self-similar breakup of polymeric threads as described by the oldroyd-b model. *J. Fluid Mech.* **887**, A19–1.
- EGGERS, J., HOPPE, J., HYNEK, M. & SURAMLISHVILI, N. 2015 Singularities of relativistic membranes. *Geometric Flows* **1**, 17–33.
- FONTELOS, M. A. & WANG, Q. 2021 Discrete selfsimilarity in the formation of satellites for viscous cavity break-up. *Phys. Rev. Fluids* **6**, 013201.
- FRISCH, U. 1995 *Turbulence*. Cambridge University Press, Cambridge.
- GIGA, Y. & KOHN, R. V. 1985 Asymptotically self-similar blow-up of semilinear heat-equations. *Comm. Pure Appl. Math.* **38**, 297.
- GRAUER, R. & SIDERIS, T. C. 1991 Numerical computation of 3d incompressible ideal fluids with swirl. *Phys. Rev. Lett.* **67**, 3511.
- GRAVA, T., EGGERS, J. & KLEIN, C. 2016 Shock formation in the dispersionless kadomtsev-petviashvili equation. *Nonlinearity* **29**, 1384.
- HALSEY, T. C., JENSEN, M. H., KADANOFF, L. P., PROCACCIA, I. & SHRAIMAN, B. I. 1986 Fractal measures and their singularities: the characterization of strange sets. *Phys. Rev. E* **33**, 1141.
- HERRADA, M.A. & MONTANERO, J.M. 2016 A numerical method to study the dynamics of capillary fluid systems. *J. Comp. Phys.* **306**, 137–147.
- KUZNETSOV, Y. A. 2013 *Elements of applied bifurcation theory*, , vol. 112. Springer Science & Business Media.
- LIN, T.-S., ROGERS, S., TSELUIKO, D. & THIELE, U. 2016 Bifurcation analysis of the behavior of partially wetting liquids on a rotating cylinder. *Phys. Fluids* **28**, 082102.
- MÜNCH, A., WAGNER, B. & WITELSKI, T. P. 2005 Lubrication models with small slip lengths. *J. Engin. Math.* **53**, 359.
- NORE, C., ABID, M. & BRACHET, M.-E. 1997 Kolmogorov turbulence in low-temperature superflows. *Physical Review Letters* **78**, 3896.
- NYE, J. 1999 *Natural Focusing and Fine Structure of Light: Caustics and Wave Dislocations*. Institute of Physics Publishing, Bristol.

- ORON, A. 2000 Nonlinear dynamics of three-dimensional long-wave Marangoni instability in thin liquid films. *Phys. Fluids* **12**, 1633–1645.
- ORON, A., DAVIS, S. H. & BANKOFF, S. G. 1997 Long-scale evolution of thin liquid films. *Rev. Mod. Phys.* **69**, 931–980.
- POMEAU, Y., LE BERRE, M., GUYENNE, P. & GRILLI, S. 2008 Wave-breaking and generic singularities of nonlinear hyperbolic equations. *Nonlinearity* **21**, T61–T79.
- POPINET, S. 2015 Basilisk c libraries. Last accessed on 2020-07-20.
- PUMIR, A., SHRAIMAN, B. I. & SIGGIA, E. D. 1992 Vortex morphology and Kelvin’s theorem. *Phys. Rev. A* **45**, R5351.
- SHARMA, A., KISHORE, C. S., SALANIWAL, S. & RUCKENSTEIN, E. 1995 Nonlinear stability and rupture of ultrathin free films. *Phys. Fluids* **7**, 1832.
- SHARMA, A. & VERMA, R. 2004 Pattern formation and dewetting in thin films of liquids showing complete macroscale wetting: from “pancakes” to “swiss cheese”. *Langmuir* **20**, 10337–10345.
- THIELE, U. & KNOBLOCH, E. 2003 Front and back instability of a liquid film on a slightly inclined plate. *Phys. Fluids* **15**, 892–907.
- THIELE, U. & KNOBLOCH, E. 2004 Thin liquid films on a slightly inclined heated plate. *Physica D* **190**, 213–248.
- TSELUIKO, D., ALESEMI, M., LIN, T.S.-. & THIELE, U. 2020 Effect of driving on coarsening dynamics in phase-separating systems. *Nonlinearity* **33**, 4449–4483.
- TSELUIKO, D., BAXTER, J. & THIELE, U. 2013 A homotopy continuation approach for analysing finite-time singularities in thin liquid films. *IMA J. Appl. Math.* **78**, 762–776.
- WILLIAMS, M. B. & DAVIS, S. H. 1982 Nonlinear theory of film rupture. *J. Colloid Interfac. Sci.* **90**, 220–228.
- WITELSKI, T. P. & BERNOFF, A. J. 1999 Stability of self-similar solutions for van der Waals driven thin film rupture. *Phys. Fluids* **11**, 2443.
- WITELSKI, T. P. & BERNOFF, A. J. 2000 Dynamics of three-dimensional thin film rupture. *Physica D* **147**, 155–176.
- WITELSKI, T. P. & BOWEN, M. 2003 ADI schemes for higher-order nonlinear diffusion equations. *Appl. Numer. Math.* **45**, 331–351.
- ZHANG, W. W. & LISTER, J. R. 1999a Similarity solutions for capillary pinch-off in fluids of differing viscosity. *Phys. Rev. Lett.* **83**, 1151–1154.
- ZHANG, W. W. & LISTER, J. R. 1999b Similarity solutions for van der Waals rupture of thin film on a solid substrate. *Phys. Fluids* **11**, 2454–2462.