



Lee, M., Tomkinson, T. O. R., Hallis, L. J., & Mark, D. F. (2015). Formation of iddingsite veins in the martian crust by centripetal replacement of olivine: Evidence from the nakhlite meteorite Lafayette. *Geochimica et Cosmochimica Acta*, 154, 49-65. <https://doi.org/10.1016/j.gca.2015.01.022>

Publisher's PDF, also known as Version of record

License (if available):  
CC BY

Link to published version (if available):  
[10.1016/j.gca.2015.01.022](https://doi.org/10.1016/j.gca.2015.01.022)

[Link to publication record in Explore Bristol Research](#)  
PDF-document

This is the final published version of the article (version of record). It first appeared online via Elsevier at <http://www.sciencedirect.com/science/article/pii/S0016703715000332>. Please refer to any applicable terms of use of the publisher.

## University of Bristol - Explore Bristol Research

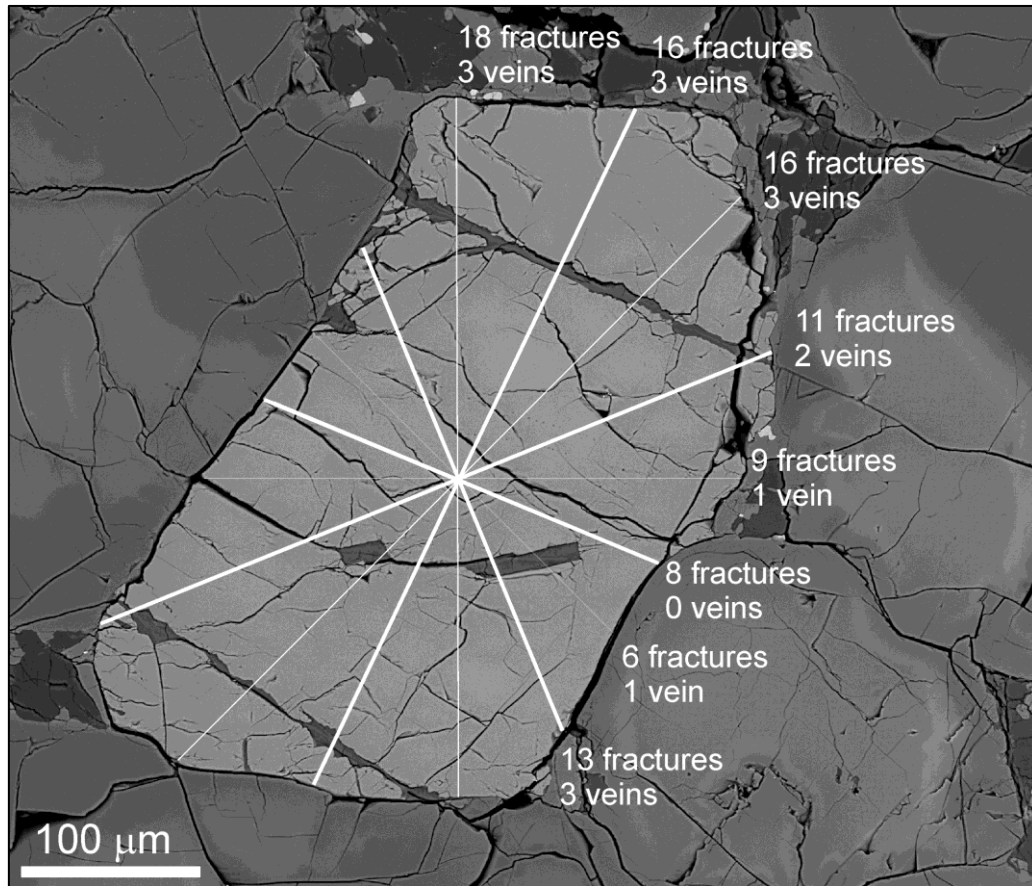
### General rights

This document is made available in accordance with publisher policies. Please cite only the published version using the reference above. Full terms of use are available: <http://www.bristol.ac.uk/pure/user-guides/explore-bristol-research/ebr-terms/>

### Supplementary figure 1

Procedure for calculating the density and preferred orientation of fractures and veins, using Lafayette olivine grain 4 as an example.

The number of fractures and veins intersected by each of 8 lines is divided by the line length, and inserted into the table below.



Data extracted from the above image

Line length (μm)	Number of fractures intersected	Number of fractures/μm	Line length (μm)	Number of veins intersected	Number of veins/μm
393	18	0.046	393	3	0.008
453	16	0.035	453	3	0.007
303	16	0.053	303	3	0.010
242	11	0.046	242	2	0.008
423	9	0.021	423	1	0.002
406	8	0.020	406	0	0.000
242	6	0.025	242	1	0.004
300	13	0.043	300	3	0.010
	$f_{\text{mean}}$	0.036		$v_{\text{mean}}$	0.006
	$f_{\text{max}}$	0.053		$v_{\text{max}}$	0.010
	$f_{\text{min}}$	0.020		$v_{\text{min}}$	0.000
	Preferred orientation factor: $(100/f_{\text{max}}) \times f_{\text{min}}$	37%		Preferred orientation factor: $(100/v_{\text{max}}) \times v_{\text{min}}$	0%